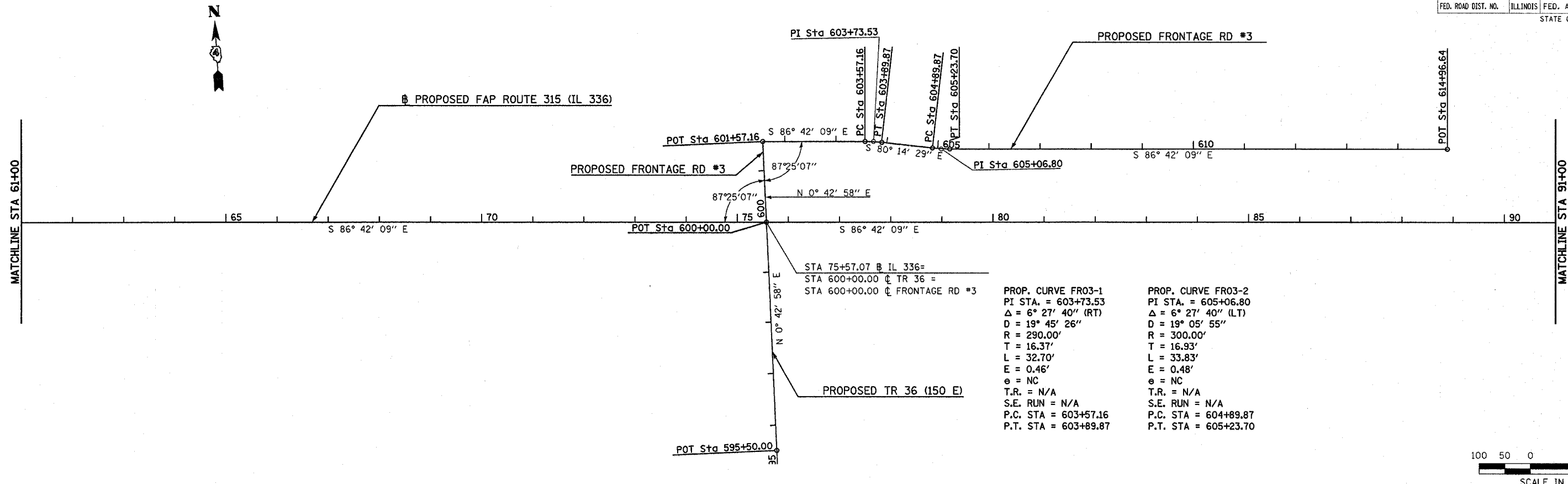
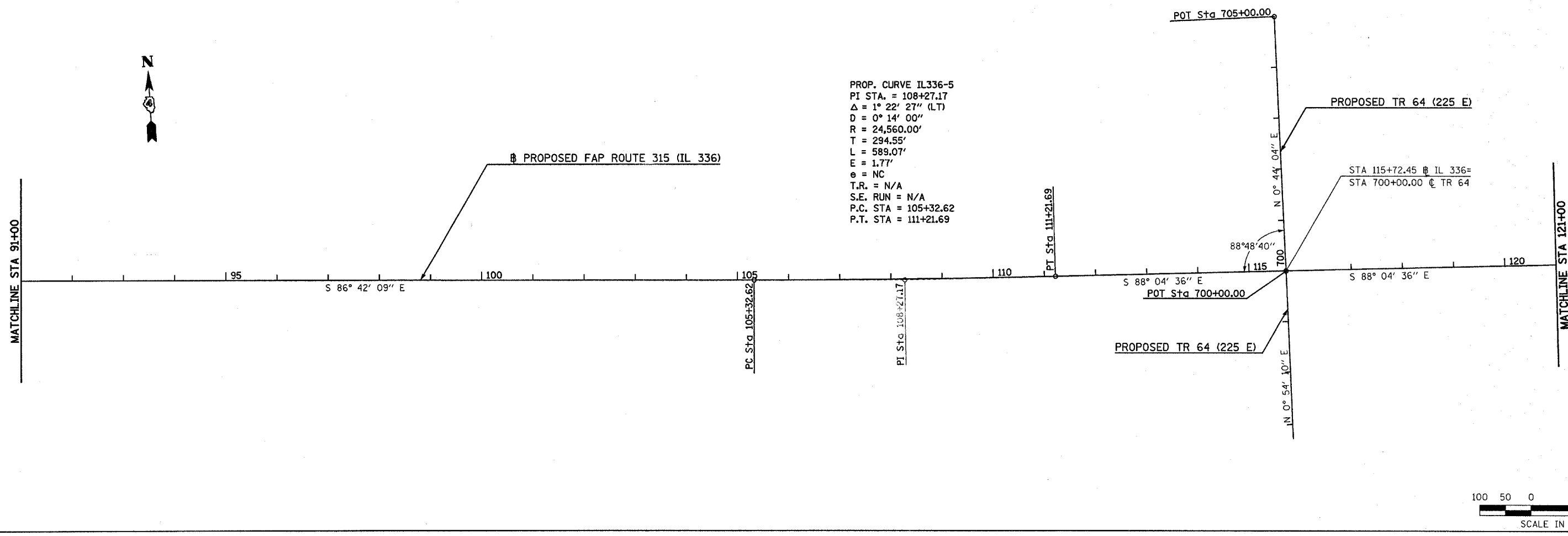


F.A.P. RTE.	SECTION	COUNTY	TOTAL SHEETS	SHEET NO.
315	(34-6,55-1)	HANCOCK/ McDONOUGH	433	43
STA. 61+00		TO STA. 121+00		
FED. ROAD DIST. NO.		ILLINOIS FED. AID PROJECT		
STATE CONTRACT NO. 68206				



PROP. CURVE FR03-1
 PI STA. = 603+73.53
 $\Delta = 6^\circ 27' 40''$ (RT)
 D = 19° 45' 26"
 R = 290.00'
 T = 16.37'
 L = 32.70'
 E = 0.46'
 e = NC
 T.R. = N/A
 S.E. RUN = N/A
 P.C. STA = 603+57.16
 P.T. STA = 603+89.87

PROP. CURVE FR03-2
 PI STA. = 605+06.80
 $\Delta = 6^\circ 27' 40''$ (LT)
 D = 19° 05' 55"
 R = 300.00'
 T = 16.93'
 L = 33.83'
 E = 0.48'
 e = NC
 T.R. = N/A
 S.E. RUN = N/A
 P.C. STA = 604+89.87
 P.T. STA = 605+23.70



PROP. CURVE IL336-5
 PI STA. = 108+27.17
 $\Delta = 1^\circ 22' 27''$ (LT)
 D = 0° 14' 00"
 R = 24,560.00'
 T = 294.55'
 L = 589.07'
 E = 1.77'
 e = NC
 T.R. = N/A
 S.E. RUN = N/A
 P.C. STA = 105+32.62
 P.T. STA = 111+21.69

Plot Date: 7/28/2006
 Plot Time: 3:29:55 PM
 Plotted By: bschmitt
 Pen Table: ldot.tbl
 File Name: I:\AD3033\cod\1\Construction_Diags\04.nc04m6.dgn