

F.A.P. RTE.	SECTION	COUNTY	TOTAL SHEETS	SHEET NO.
315	(34-6,55-1)	HANCOCK/McDONOUGH	433	71
STA. 52+00		TO STA. 112+00		
FED. ROAD DIST. NO.	ILLINOIS	FED. AID PROJECT		
STATE CONTRACT NO. 68206				

MAINTENANCE OF TRAFFIC STAGE 1

SEQUENCE OF CONSTRUCTION

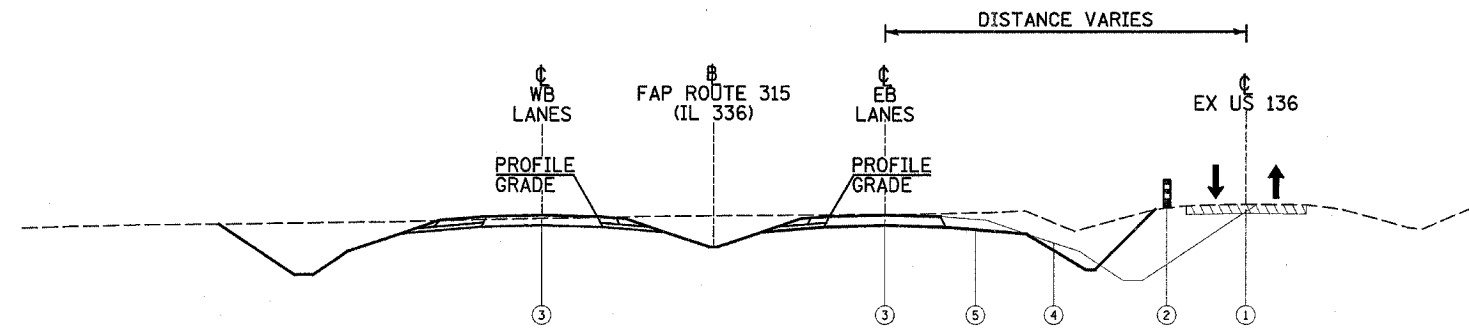
- BUILD FRONTAGE RD #3
- BUILD TEMPORARY ACCESS TO HIGGINS, WILLIAM SIBLEY, AND DANNY BARTLETT FARMS
- BUILD TEMPORARY ACCESS TO WILLIAM SIBLEY AND MARVIN PETTIT FARMS
- BUILD FUTURE WESTBOUND IL 336 FROM STA 52+00 TO STA 112+00 AND THE INTERSECTION WITH FRONTAGE ROAD #3
- BUILD FUTURE EASTBOUND IL 336 FROM STA 52+00 TO STA 66+00
- GRADE FUTURE EASTBOUND IL 336 FROM STA 66+00 TO STA 112+00

TRAFFIC PLACEMENT

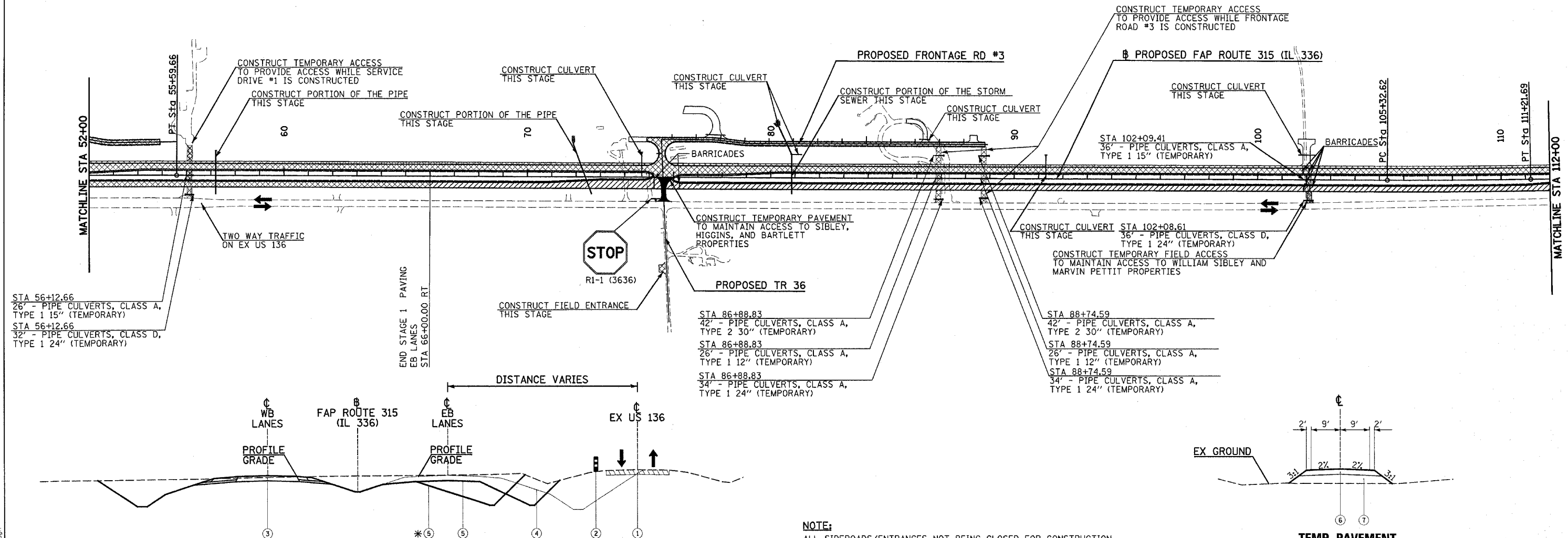
- MAINTAIN WESTBOUND & EASTBOUND TRAFFIC ON EXISTING US 136

TRAFFIC CONTROL STANDARDS

701006 701011



**TYPICAL SECTION
STA 52+00 TO STA 66+00**



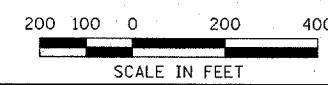
**TYPICAL SECTION
STA 66+00 TO STA 77+00
*STA 77+00 TO STA 83+00
STA 83+00 TO STA 112+00**

- | | |
|-------------------------------------------------------|--------------------------------|
| ① WESTBOUND & EASTBOUND TRAFFIC ON EXISTING US 136 | ⑤ GRADING ONLY IN THIS STAGE |
| ② DRUMS WITH STEADY BURN LIGHTS (PER STANDARD 701006) | ⑥ 8" BITUMINOUS BASE COURSE |
| ③ PROPOSED CONSTRUCTION THIS STAGE | ⑦ GRANULAR EMBANKMENT, SPECIAL |
| ④ FUTURE GRADING IN STAGE 2 | |

NOTE:
ALL SIDEROADS/ENTRANCES NOT BEING CLOSED FOR CONSTRUCTION, ARE TO REMAIN OPEN AND BE CONSTRUCTED WITH MINIMAL TEMPORARY SHUTDOWNS AT THE DIRECTION OF THE ENGINEER. SEE GENERAL NOTE #12.

LEGEND	
↑	DIRECTION OF TRAFFIC FLOW
⊥	ROAD CLOSED (TYPE III BARRICADE)
▨	TEMPORARY CROSSOVER (BY OTHERS)
▧	GRADING ONLY
⊞	ARROW PANEL SUPPORT
▩	GRADING & PAVING
■	TEMPORARY PAVEMENT (THIS CONTRACT)
▨	COMPLETED PAVEMENT
⋯	ARROW BOARD
D	PORTABLE CHANGEABLE MESSAGE SIGN

**TEMP PAVEMENT
ACCESS TO SIBLEY, HIGGINS,
& BARTLETT PROPERTIES
TYPICAL SECTION**



REVISIONS	
NAME	DATE

ILLINOIS DEPARTMENT OF TRANSPORTATION
CONSTRUCTION STAGING PLAN
STAGE 1
FAP ROUTE 315 (IL 336)
SCALE: VERT. N/A
HORIZ. 1"=200'
DATE: 12/17/03
DRAWN BY: HH
CHECKED BY: SRD

Plot Date: 7/8/2006
 Plot Path: C:\Users\jbr\Documents\Projects\1120333\1120333.dgn
 Pen Tables: 1120333.ctb
 File Name: 1120333.ctb