

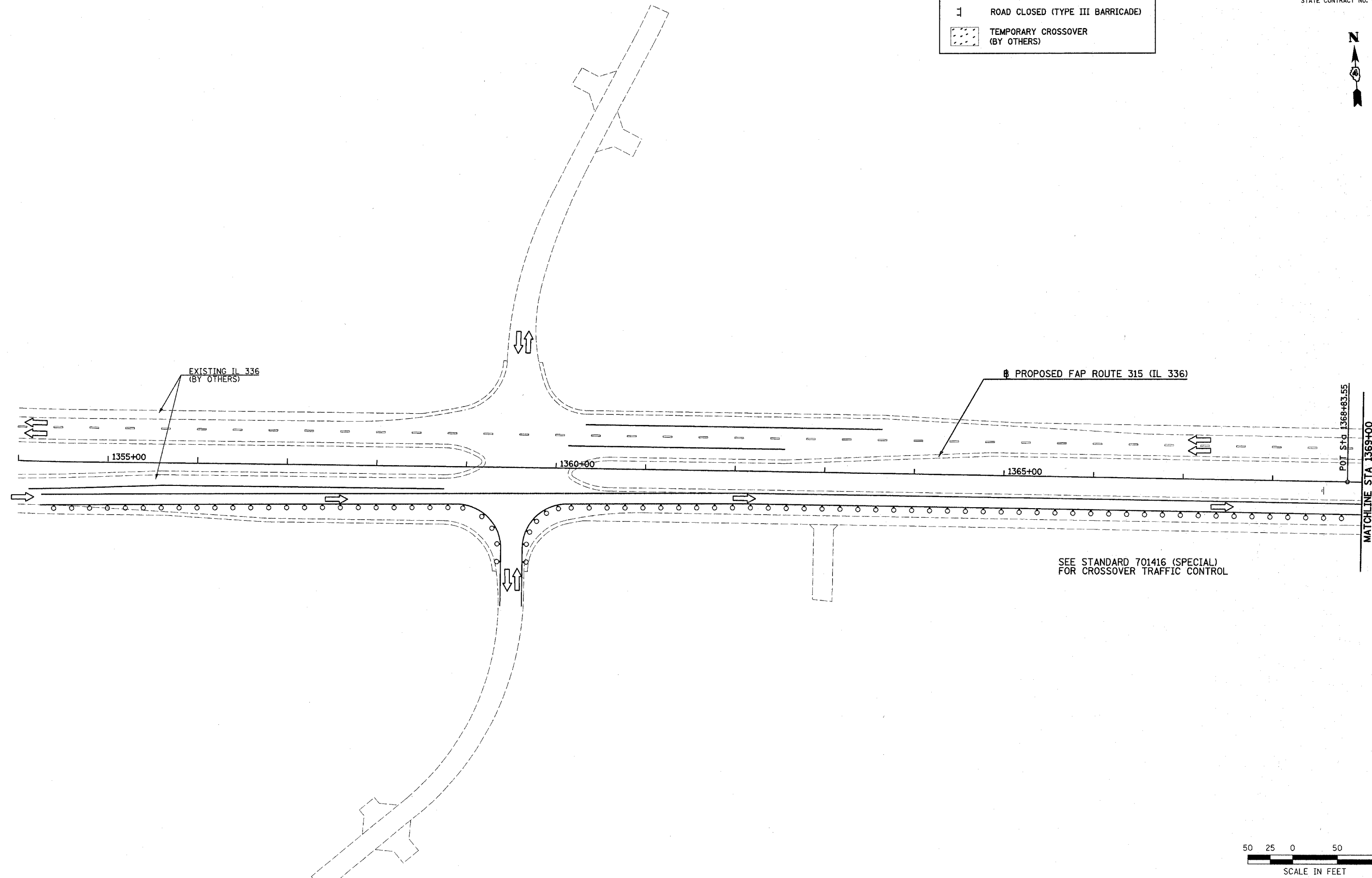
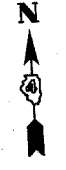
F.A.P. RTE.	SECTION	COUNTY	TOTAL SHEETS	SHEET NO.
315	(34-6,55-1)	HANCOCK/McDONOUGH	433	94
STA. 1354+00		TO STA. 1399+00		
FED. ROAD DIST. NO.	ILLINOIS	FED. AID PROJECT		
STATE CONTRACT NO. 68206				

**LEGEND**

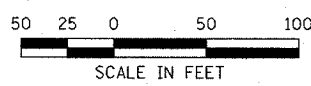
↑ DIRECTION OF TRAFFIC FLOW

⊥ ROAD CLOSED (TYPE III BARRICADE)

▨ TEMPORARY CROSSOVER (BY OTHERS)



SEE STANDARD 701416 (SPECIAL)  
FOR CROSSOVER TRAFFIC CONTROL



PLAN	SURVEYED	DATE
NOTE BOOK NO.	BY	

PROFILE	SURVEYED	DATE
NOTE BOOK NO.	BY	

Plot Date: 7/18/2006  
Plot Time: 3:26:23 PM  
Plotted By: bschmidt  
File Name: I:\03033\road\construction\plans\065\_ea205pp352.dgn