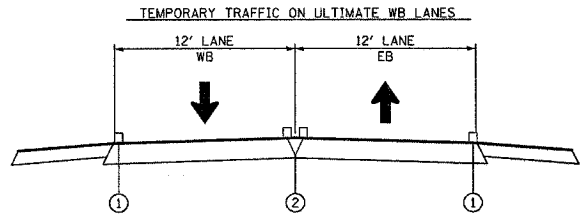
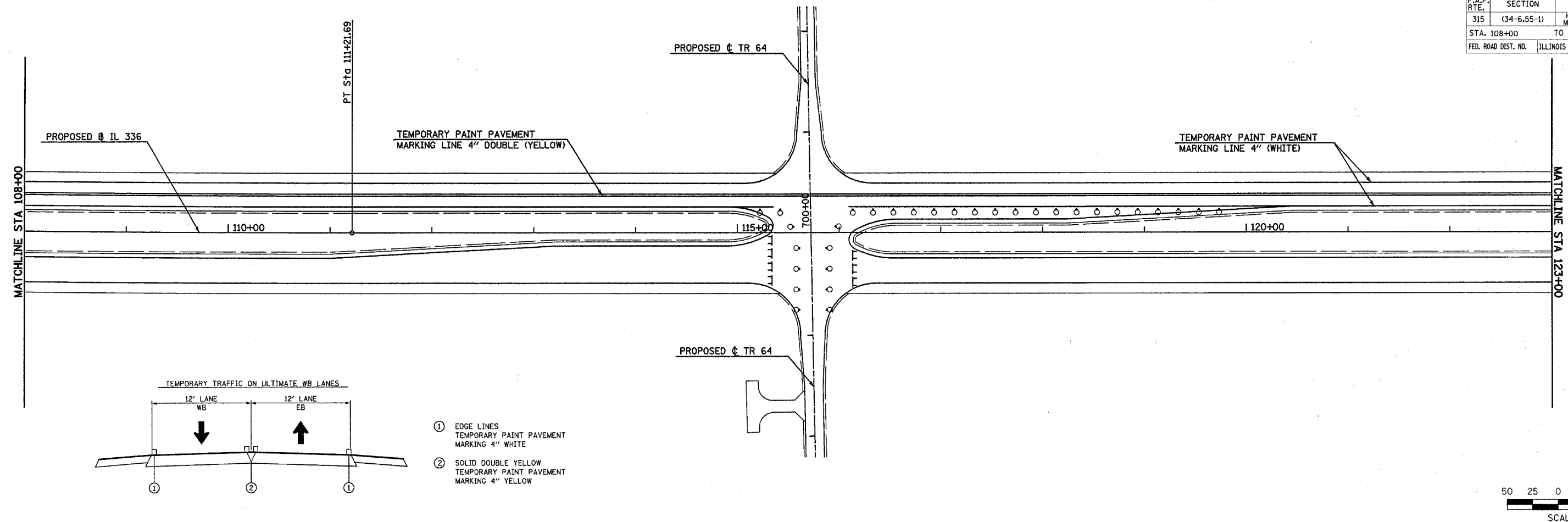
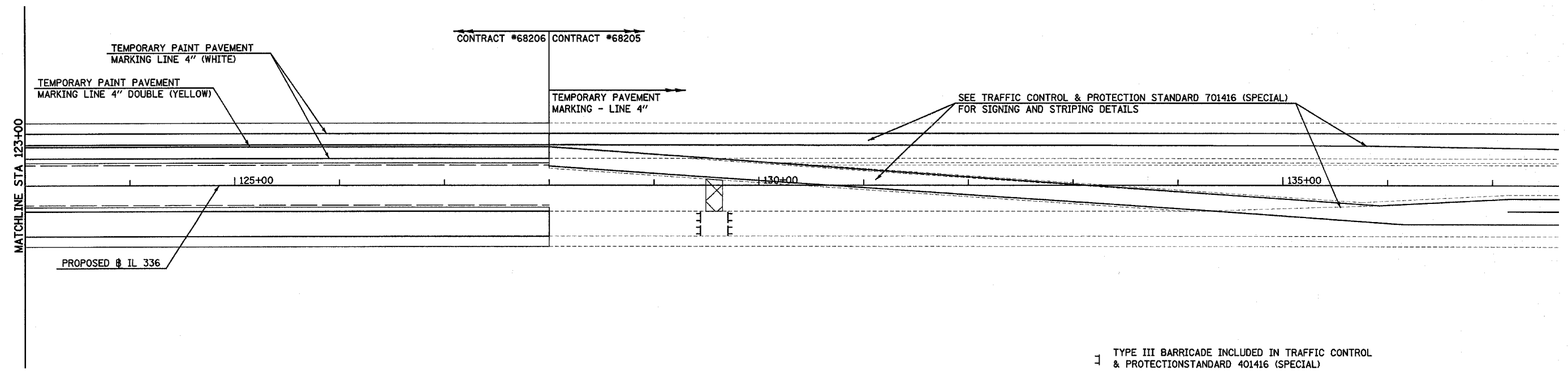
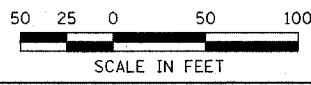


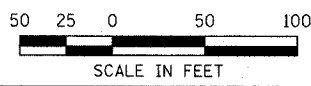
F.A.P. RTE.	SECTION	COUNTY	TOTAL SHEETS	SHEET NO.
315	(34-6,55-1)	HANCOCK/McDONOUGH	433	113
STA. 108+00		TO STA. 137+00		
FED. ROAD DIST. NO.	ILLINOIS	FED. AID PROJECT	STATE CONTRACT NO. 68206	



- ① EDGE LINES  
TEMPORARY PAINT PAVEMENT  
MARKING 4" WHITE
- ② SOLID DOUBLE YELLOW  
TEMPORARY PAINT PAVEMENT  
MARKING 4" YELLOW



- ▣ TYPE III BARRICADE INCLUDED IN TRAFFIC CONTROL & PROTECTION STANDARD 401416 (SPECIAL)
- DRUM WITH MONODIRECTIONAL STEADY LIGHT AT 20' CENTERS INCLUDED IN TRAFFIC CONTROL & PROTECTION STANDARD 701416 (SPECIAL)



**CONSTRUCTION STAGING (STAGE 2) TEMPORARY PAVEMENT MARKING - FAP ROUTE 315 (IL 336) STA 108+00 TO STA 137+00**

Plot Date: 7/16/2006  
 Plot Time: 3:47:55 PM  
 Plotted By: bschmidt  
 Pen Tables: ldat.tbl  
 Fillnames: it:\03033\cadd\constr\function.plans\084.cs\pml030306.dcn