

NE 1/4, SECTION 24, T5N, R5W, 4TH P.M.

NW 1/4, SECTION 24, T5N, R5W, 4TH P.M.

IDOT DISTRICT 6

IDOT DISTRICT 4

NE 1/4, SECTION 24, T5N, R5W, 4TH P.M.

NW 1/4, SECTION 24, T5N, R5W, 4TH P.M.

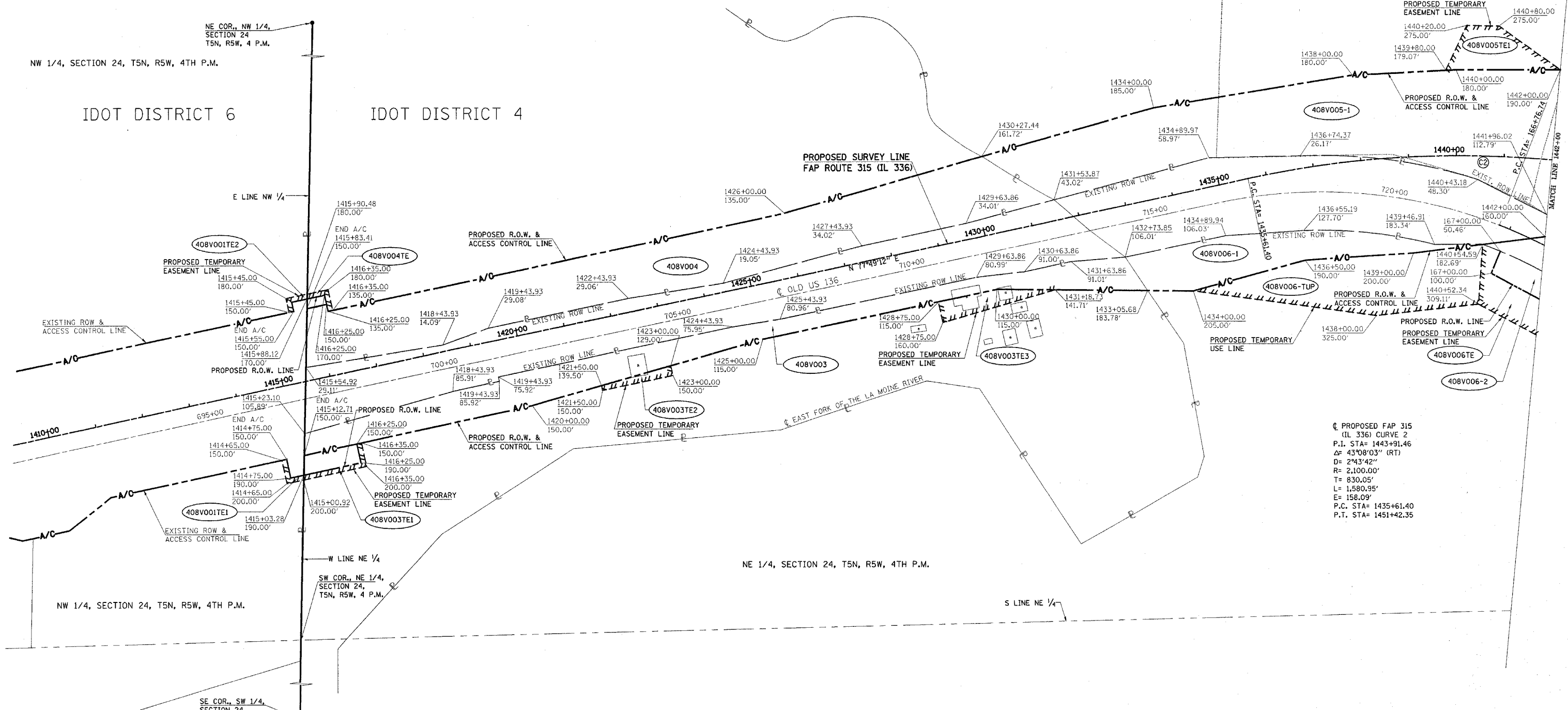
SE COR., SW 1/4, SECTION 24, T5N, R5W, 4TH P.M.

SW COR., NE 1/4, SECTION 24, T5N, R5W, 4TH P.M.

APPROVED BY _____ DISTRICT ENGINEER

DATE _____

PROPOSED SURVEY LINE
FAP ROUTE 315 (IL 336)



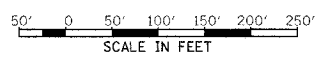
C PROPOSED FAP 315
 (IL 336) CURVE 2
 P.I. STA= 1443+91.46
 Δ= 43°08'03" (RT)
 D= 2°43'42"
 R= 2,100.00'
 L= 1,580.95'
 E= 158.09'
 P.C. STA= 1435+61.40
 P.T. STA= 1451+42.35

FOR INFORMATION ONLY

**RIGHT OF WAY PLANS
FAP ROUTE 315**

PROJECT _____ SECTION 34-6, 55-1
 STATION 1414+65.00 TO 1442+00
 STATION 1442+00
 COUNTY HANCOCK
 SCALE 1"=100' SHEET 2 OF 8

- LEGEND**
- ▲ SET PK NAIL
 - SET IRON PIN
 - FOUND BRASS DISK
 - ⊙ FOUND RR SPIKE
 - ⊕ FOUND IRON PIN OR PIPE
 - ⊘ FOUND STONE
 - ⊙ FOUND PK NAIL
 - ⊙ PROPERTY LINE
 - PROPOSED ROW LINE
 - A/C- PROPOSED ACCESS CONTROLLED LINE
 - - - - - PROPOSED TEMPORARY EASEMENT LINE
 - - - - - EXISTING FENCE



GRID FACTOR = 0.999962
 ZONE = IL WEST, 1983 DATUM
 VERTICAL DATUM = NGVD 1929

DRAWN BY _____
 WRITTEN BY _____
 CHECKED BY _____
 PLOTTED BY _____
 DATE _____