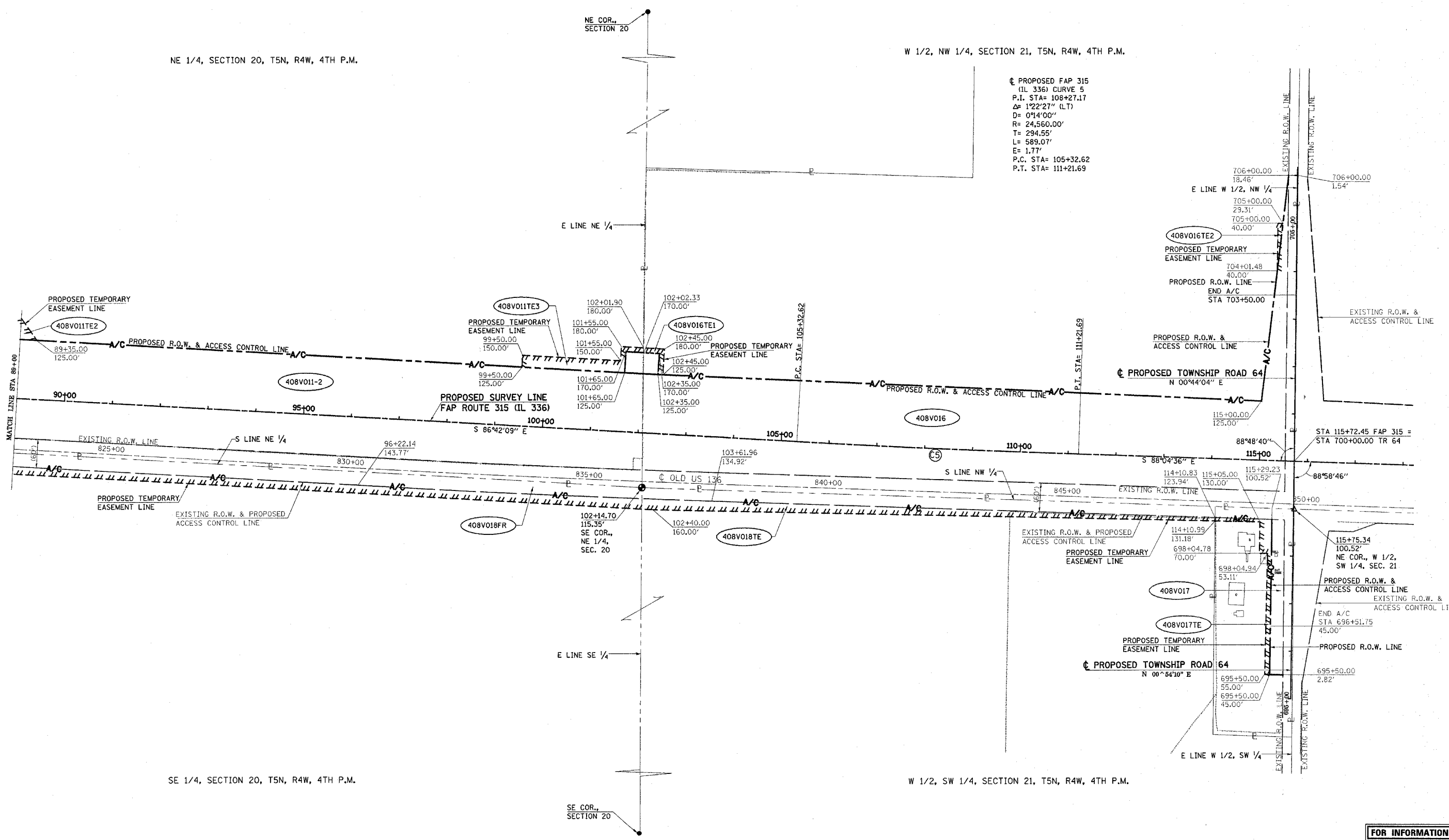


NE 1/4, SECTION 20, T5N, R4W, 4TH P.M.

W 1/2, NW 1/4, SECTION 21, T5N, R4W, 4TH P.M.

PROPOSED FAP 315
 (IL 336) CURVE 5
 P.I. STA= 108+27.17
 $\Delta = 122'27''$ (LT)
 $D = 0'14'00''$
 $R = 24,560.00'$
 $T = 294.55'$
 $L = 589.07'$
 $E = 1.77'$
 P.C. STA= 105+32.62
 P.T. STA= 111+21.69

APPROVED BY _____ DISTRICT ENGINEER
 DATE _____



SE 1/4, SECTION 20, T5N, R4W, 4TH P.M.

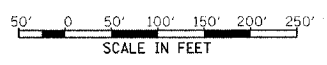
W 1/2, SW 1/4, SECTION 21, T5N, R4W, 4TH P.M.

FOR INFORMATION ONLY

RIGHT OF WAY PLANS
FAP ROUTE 315

PROJECT _____ SECTION 34-6, 55-1
 STATION 89+00 TO
 STATION 115+75.34
 COUNTY MC DONOUGH
 SCALE 1"=100' SHEET 6 OF 8

- LEGEND**
- ▲ SET PK NAIL
 - SET IRON PIN
 - FOUND BRASS DISK
 - ◆ FOUND RR SPIKE
 - FOUND IRON PIN OR PIPE
 - FOUND STONE
 - ▲ FOUND PK NAIL
 - PROPERTY LINE
 - PROPOSED ROW LINE
 - PROPOSED ACCESS CONTROLLED LINE
 - - - - - PROPOSED TEMPORARY EASEMENT LINE
 - - - - - EXISTING FENCE



DRAWN BY _____
 WRITTEN BY _____
 CHECKED BY _____
 PLOTTED BY _____
 FILE NAME: I:\03033\03033.dwg

GRID FACTOR = 0.999962
 ZONE = IL WEST, 1983 DATUM
 VERTICAL DATUM = NGVD 1929