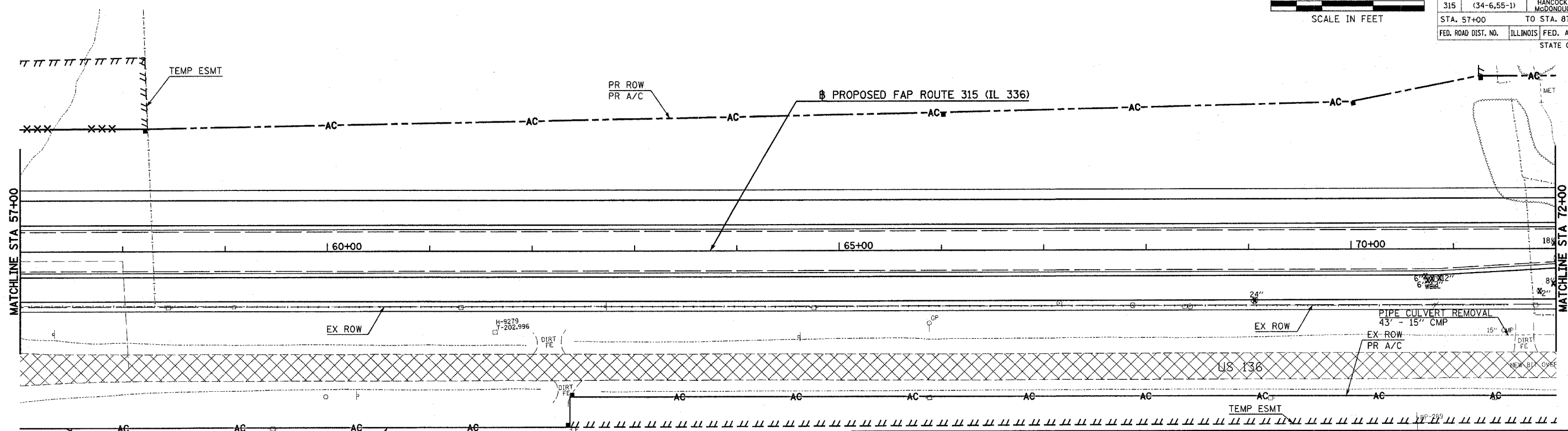
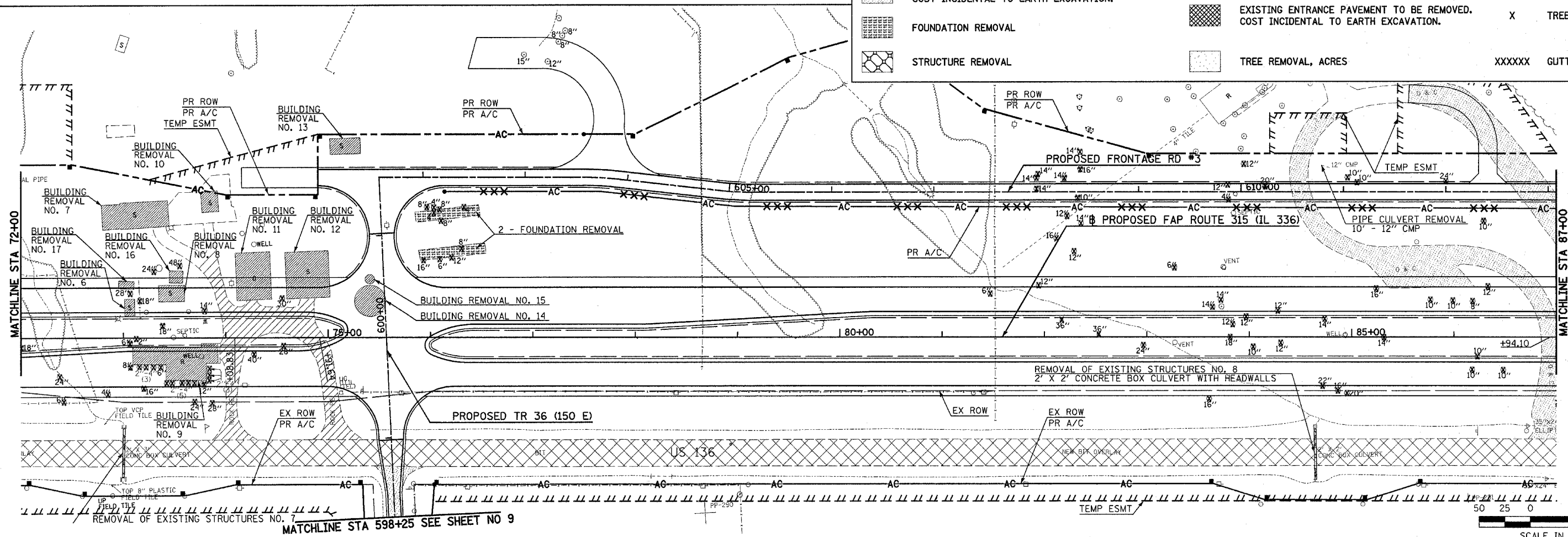


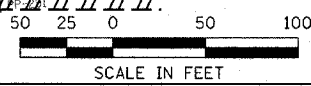
F.A.P. RTE.	SECTION	COUNTY	TOTAL SHEETS	SHEET NO.
315	(34-6,55-1)	HANCOCK/McDONOUGH	433	155
STA. 57+00		TO STA. 87+00		
FED. ROAD DIST. NO.	ILLINOIS	FED. AID PROJECT		
STATE CONTRACT NO. 68206				



REMOVAL LEGEND					
	PAVEMENT REMOVAL		EXISTING GRAVEL PAVEMENT TO BE REMOVED. COST INCIDENTAL TO EARTH EXCAVATION.		BUILDING REMOVAL
	EXISTING OIL & CHIP PAVEMENT TO BE REMOVED. COST INCIDENTAL TO EARTH EXCAVATION.		EXISTING ENTRANCE PAVEMENT TO BE REMOVED. COST INCIDENTAL TO EARTH EXCAVATION.	X	TREE REMOVAL
	FOUNDATION REMOVAL		TREE REMOVAL, ACRES	XXXXXX	GUTTER REMOVAL
	STRUCTURE REMOVAL				



MATCHLINE STA 598+25 SEE SHEET NO 9



Plot Date: 7/26/2006
 Plot Time: 3:28:45 PM
 Plot Path: By: bscammat
 Pen Table: lds1.tbl
 File Name: I:\D3033\ced\4\constr\ur\fon_d\ens\18_r.m\5m51.dgn