

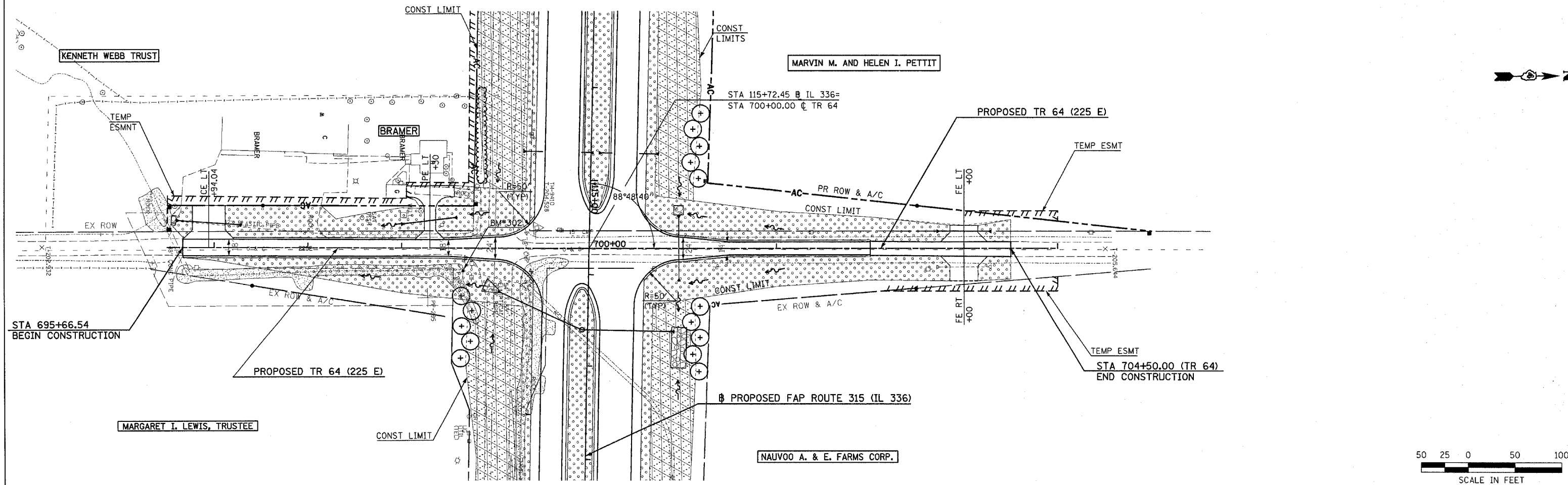
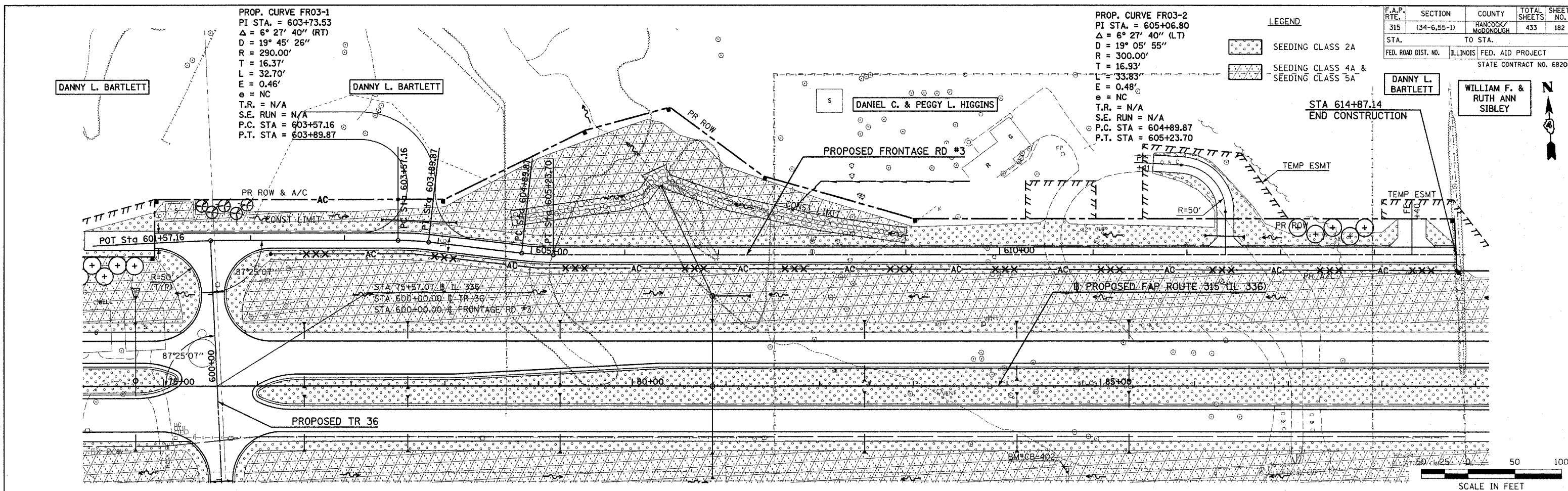
F.A.P. RTE.	SECTION	COUNTY	TOTAL SHEETS	SHEET NO.
315	(34-6.55-1)	HANCOCK/McDONOUGH	433	182
STA. TO STA.		ILLINOIS FED. AID PROJECT		
FED. ROAD DIST. NO.		STATE CONTRACT NO. 68206		

PROP. CURVE FR03-1
 PI STA. = 603+73.53
 $\Delta = 6^\circ 27' 40''$ (RT)
 $D = 19^\circ 45' 26''$
 $R = 290.00'$
 $T = 16.37'$
 $L = 32.70'$
 $E = 0.46'$
 $e = NC$
 $T.R. = N/A$
 $S.E. RUN = N/A$
 $P.C. STA = 603+57.16$
 $P.T. STA = 603+89.87$

PROP. CURVE FR03-2
 PI STA. = 605+06.80
 $\Delta = 6^\circ 27' 40''$ (LT)
 $D = 19^\circ 05' 55''$
 $R = 300.00'$
 $T = 16.93'$
 $L = 33.83'$
 $E = 0.48'$
 $e = NC$
 $T.R. = N/A$
 $S.E. RUN = N/A$
 $P.C. STA = 604+89.87$
 $P.T. STA = 605+23.70$

- LEGEND
- SEEDING CLASS 2A
 - SEEDING CLASS 4A & SEEDING CLASS 5A

DANNY L. BARTLETT
 WILLIAM F. & RUTH ANN SIBLEY



Plot Date: 7/18/2006
 Plot Time: 3:30:28 PM
 Plotter: jay_bschmidt
 File Name: \\s020333\cadd\construction\plans\173_1823r_fr03_tr64.dgn