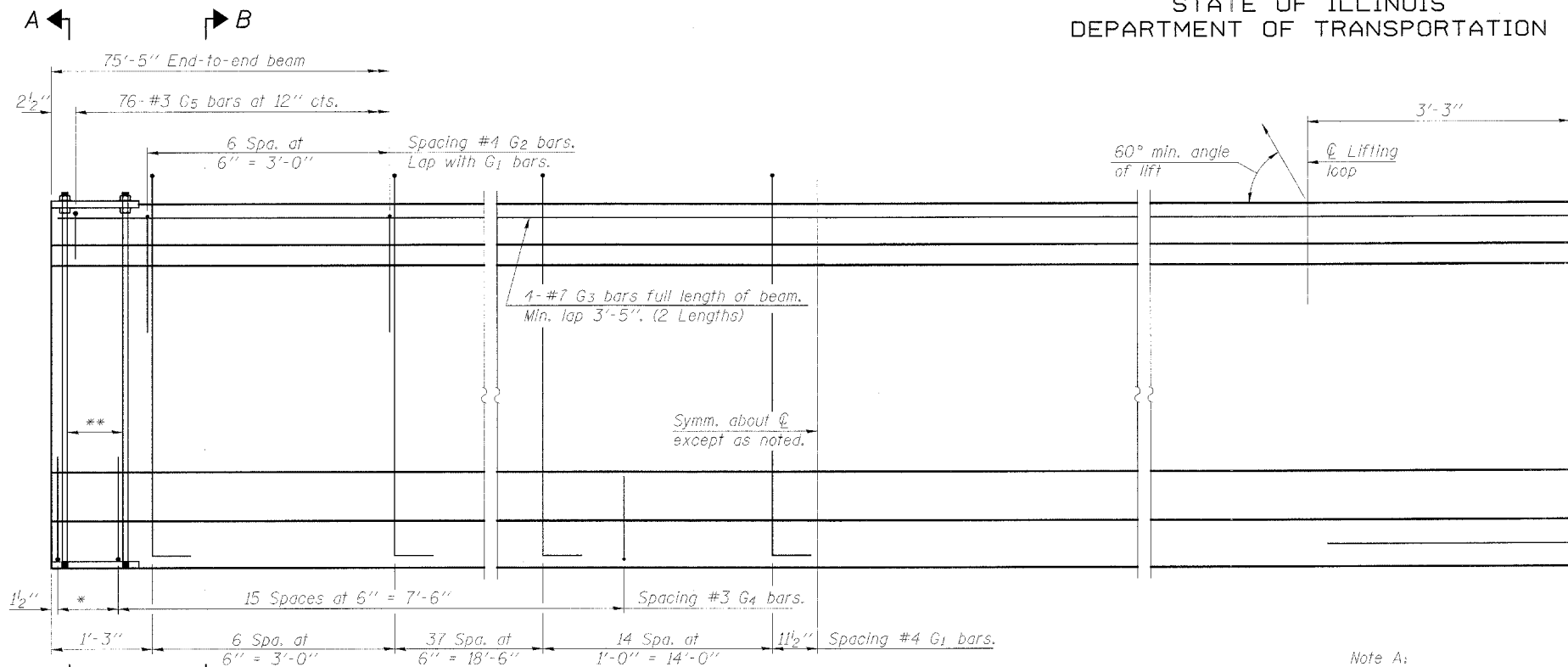


STATE OF ILLINOIS  
DEPARTMENT OF TRANSPORTATION

ROUTE NO.	SECTION	COUNTY	TOTAL SHEETS	SHEET NO.	SHEET NO. 14
F.A.P. 315	34-6, 55-1	HANCOCK	433	212	36 SHEETS
FED. ROAD DIST. NO. 7	ILLINOIS	FED. AID PROJECT			

Contract #68206



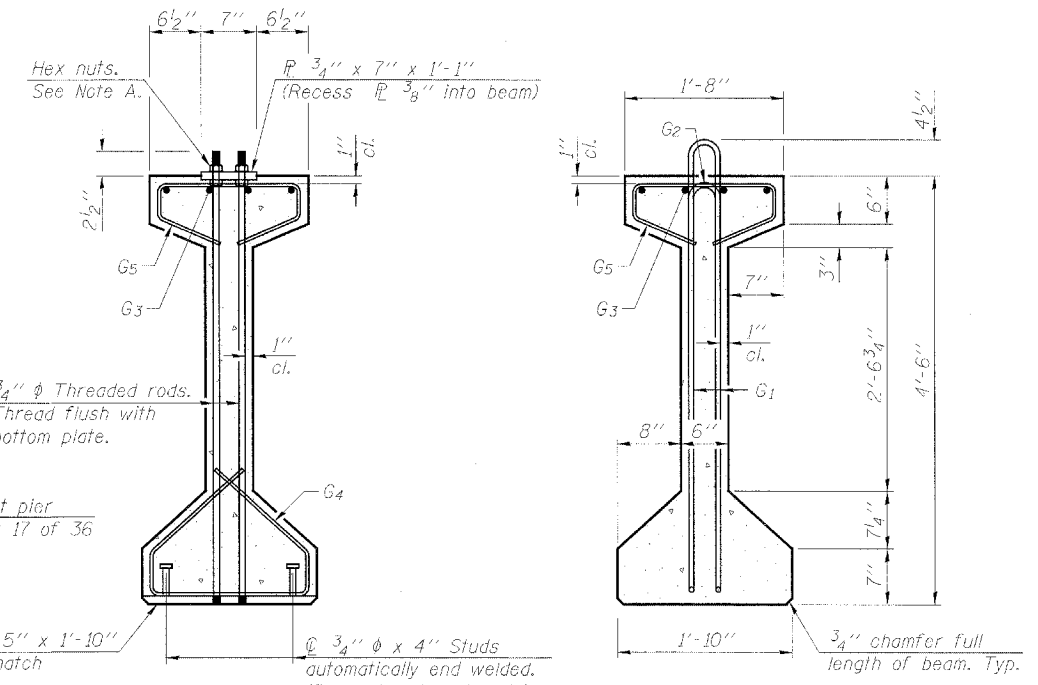
**ELEVATION OF BEAM**  
(Showing reinforcement & dimensions)

\* 3 spaces at 3" = 9".  
\*\* 4-3/4"  $\phi$  threaded dowel rods at 3" cts., each face.

Note A:  
Hex nuts (top and bottom) with lock washers (top). Only tighten sufficiently to compress lock washers.

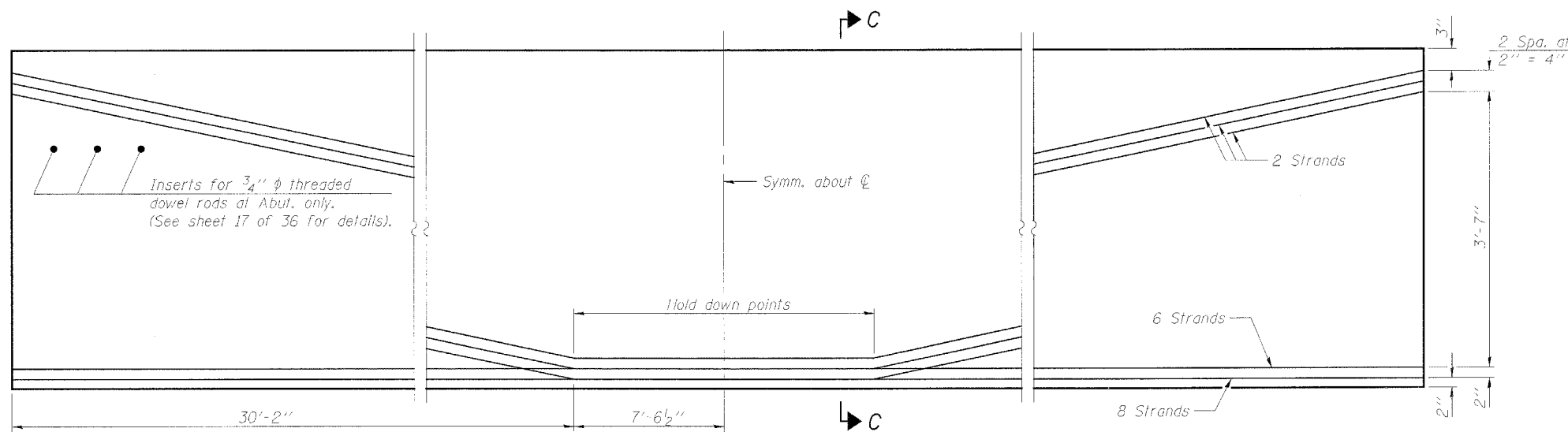
2-#8 G6 bars at pier only. (See sheet 17 of 36 for details).

1" x 1'-5" x 1'-10" (Bevel to match chamfer).  
3/4"  $\phi$  x 4" Studs automatically end welded. (Space to miss strands).

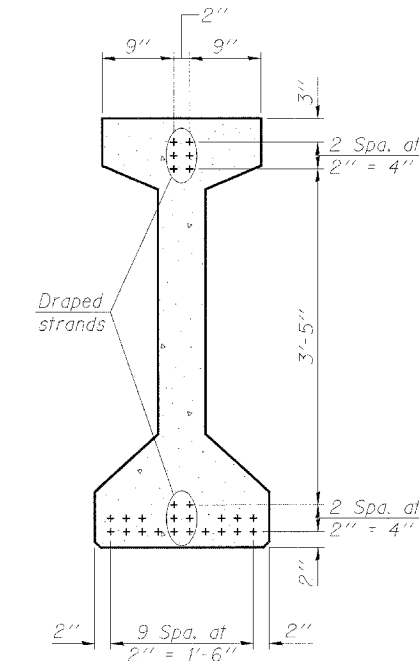


**SECTION A-A**

**SECTION B-B**



**ELEVATION OF BEAM**  
(Showing prestressing steel)



**SECTION C-C**

**BAR LIST  
ONE BEAM ONLY**

Bar	No.	Size	Length	Shape
G <sub>1</sub>	116	#4	10'-5"	⊏
G <sub>2</sub>	14	#4	5'-4"	⊏
G <sub>3</sub>	8	#7	39'-4"	⊏
G <sub>4</sub>	38	#3	4'-11"	⊏
G <sub>5</sub>	76	#3	3'-5"	⊏
G <sub>6</sub>	2	#8	3'-9"	⊏

Notes:  
See sheet 17 of 36 for additional details and Bill of Material.  
Required release strength,  $f'_{ci}$ , shall be 6,000 psi.

DESIGNED	KLH
CHECKED	EML
DRAWN	KRF/EMI
CHECKED	KLH

**HORNER & SHIFRIN, INC.**  
ENGINEERS ■ ARCHITECTS ■ PLANNERS

PI-4-54

7-15-05

**54" PPC I-BEAM, SPAN 1**  
**ILLINOIS ROUTE 336 OVER**  
**EAST FORK OF THE LAMOINE RIVER**  
**F.A.P. ROUTE 315 - SECTION 34-6, 55-1**  
**HANCOCK COUNTY; STA. 1432+02.61**  
**STRUCTURE NO. 034-0511 (E.B.)**  
**STRUCTURE NO. 034-0512 (W.B.)**