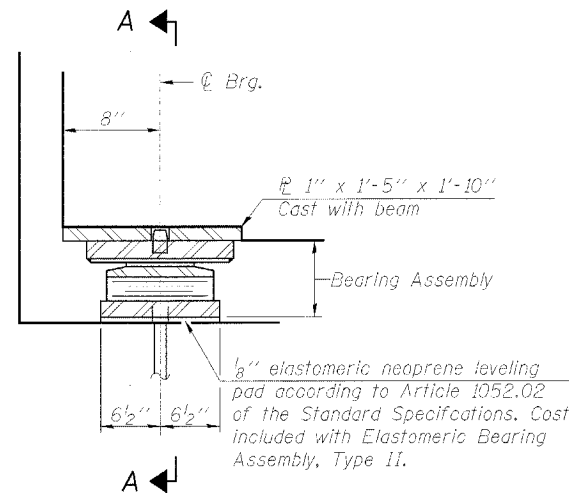


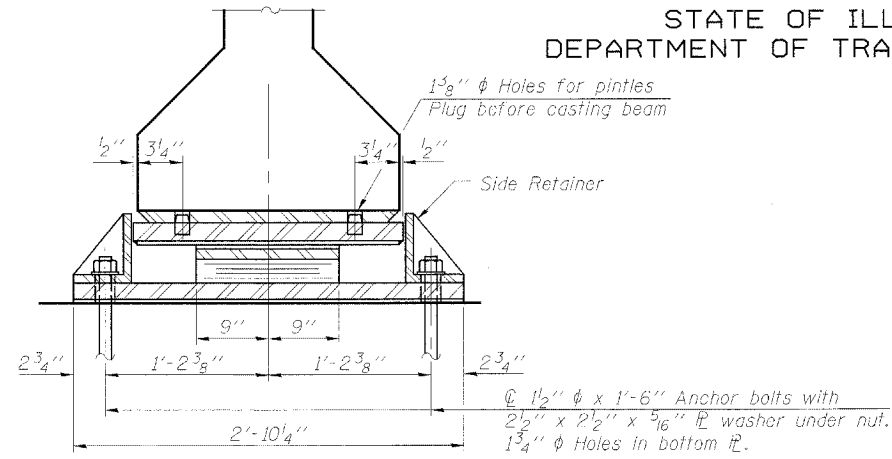
STATE OF ILLINOIS
DEPARTMENT OF TRANSPORTATION

ROUTE NO.	SECTION	COUNTY	TOTAL SHEETS	SHEET NO.	SHEET NO. 19 36 SHEETS
F.A.P. 315	34-6, 55-1	HANCOCK	433	217	
FED. ROAD DIST. NO. 7	ILLINOIS	FED. AID PROJECT			

Contract #68206



SECTION AT E. ABUT.

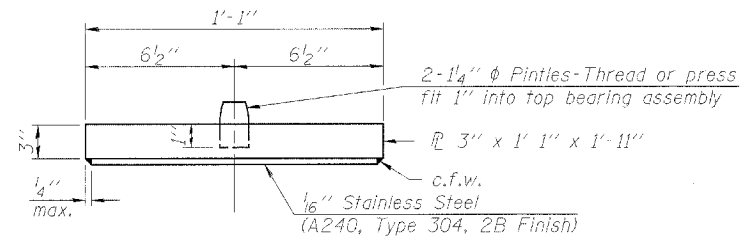


SECTION A-A

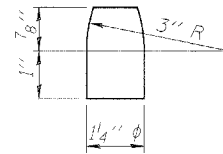
Notes:

The 1/8" PTFE sheet shall be bonded directly to the top steel plate with a two-component, medium viscosity epoxy resin, conforming to the requirements of the Federal Specification MMM-A-134, Type I. The bond agent shall be applied on the full area of the contact surfaces. Bonding of 1/8" PTFE sheet during vulcanizing process will be permitted provided the process and method of adjusting assembly height is approved by the Engineer.
Holes at expansion bearings shall be drilled and anchor bolts grouted in place after beams have been erected.
See sheet 20 of 36 for anchor bolt installation.
See sheet 17 of 36 for additional details of plate cast with beam.

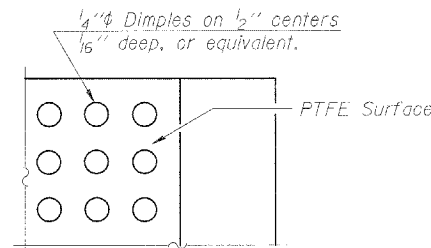
TYPE II ELASTOMERIC EXP. BRG.



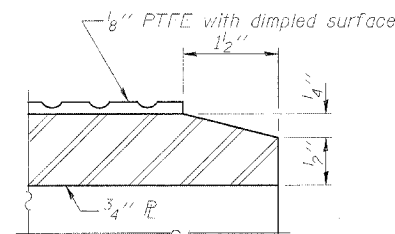
TOP BEARING ASSEMBLY



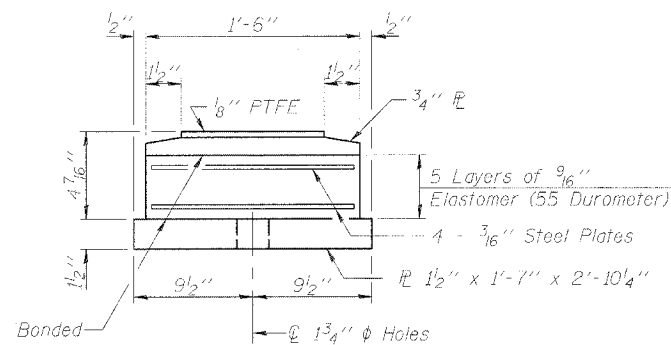
PINTLE



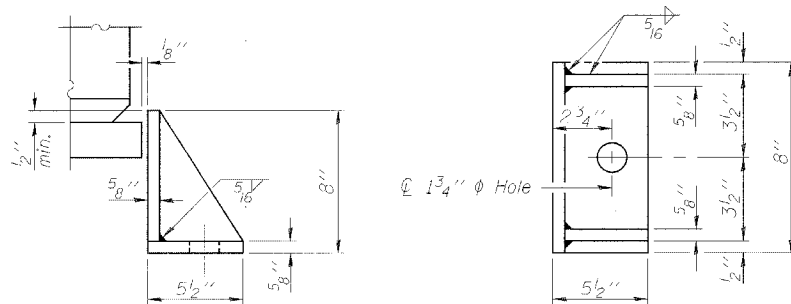
PLAN-PTFE SURFACE



SECTION THRU PTFE

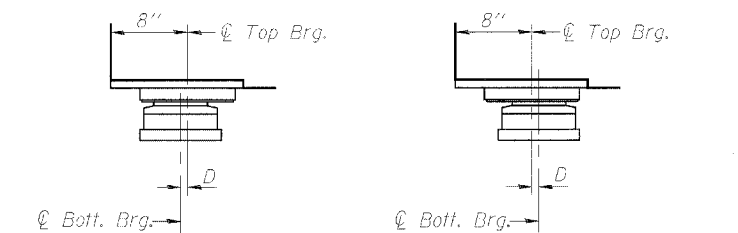


BOTTOM BEARING ASSEMBLY



SIDE RETAINER

Cost included with Elastomeric Bearing Assembly, Type II. Equivalent rolled angle with stiffeners will be allowed in lieu of welded plates.



(Move bott. brg. away from fixed brg.) (Move bott. brg. toward fixed brg.)

SETTING ANCHOR BOLTS AT EXP. BRG.

D = 1/8" per each 100' of expansion for every 15° temp. change from the normal temp. of 50°F.

BILL OF MATERIAL (E. ABUT.)
(ONE STRUCTURE)

Item	Unit	Total
Elastomeric Bearing Assembly, Type II	Each	6

BEARING DETAILS, TYPE II
ILLINOIS ROUTE 336 OVER
EAST FORK OF THE LAMOINE RIVER
F.A.P. ROUTE 315 - SECTION 34-6, 55-1
HANCOCK COUNTY; STA. 1432+02.61
STRUCTURE NO. 034-0511 (E.B.)
STRUCTURE NO. 034-0512 (W.B.)

DESIGNED	KLH
CHECKED	EML
DRAWN	EML
CHECKED	KPH

HORNER & SHIFRIN, INC.
ENGINEERS ■ ARCHITECTS ■ PLANNERS

PI-2E-2

7-15-05