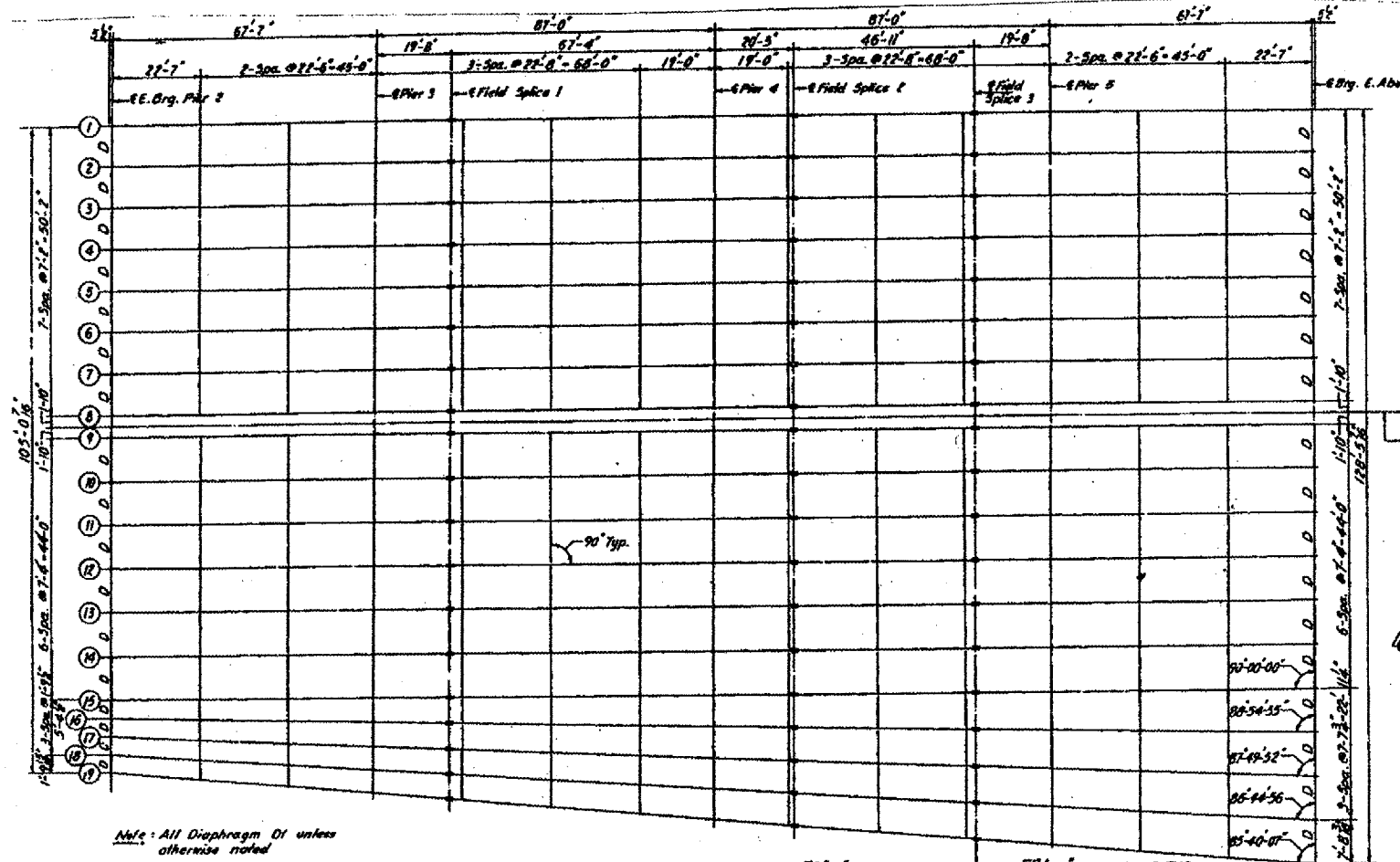
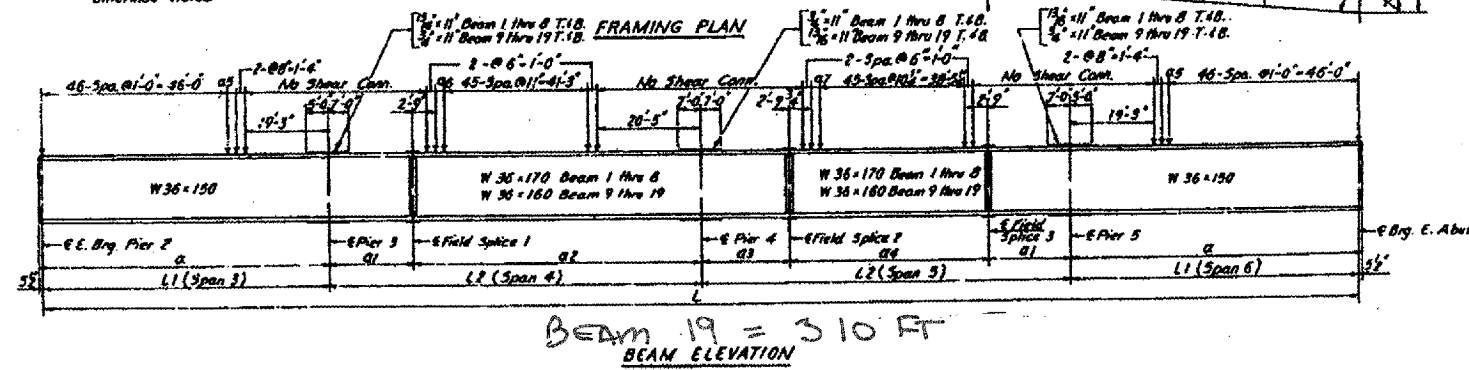


# BRIDGE NO 1- 072-0134 US RT 24 OVER KICKAPOO CREEK

F.A. RTE.	SECTION	COUNTY	TOTAL SHEETS	SHEET NO.
VAR	D4 BRDC PNT 07	VARIOUS	17	7
STA.		TO STA.		
FED. ROAD DIST. NO. 4		ILLINOIS		



Note: All Diaphragm D1 unless otherwise noted



ILLINOIS DEPARTMENT OF TRANSPORTATION  
 BRIDGE NO 1  
 FRAMING PLAN  
 DATE 07-26-2006  
 DRAWN BY

FOR INFORMATION ONLY