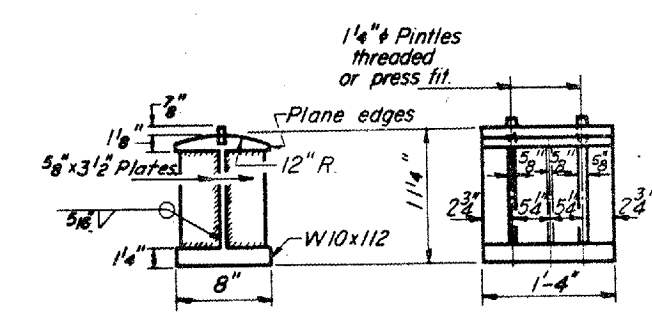
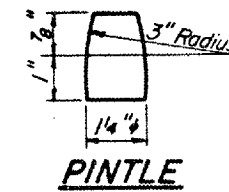
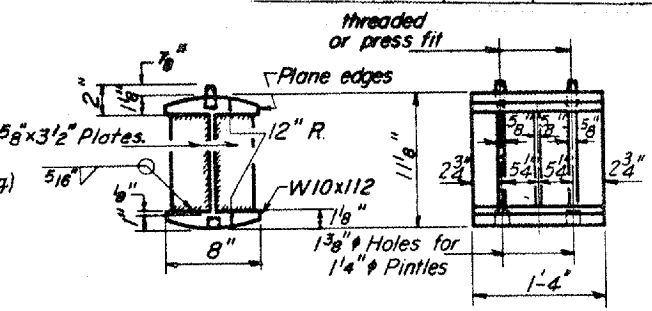
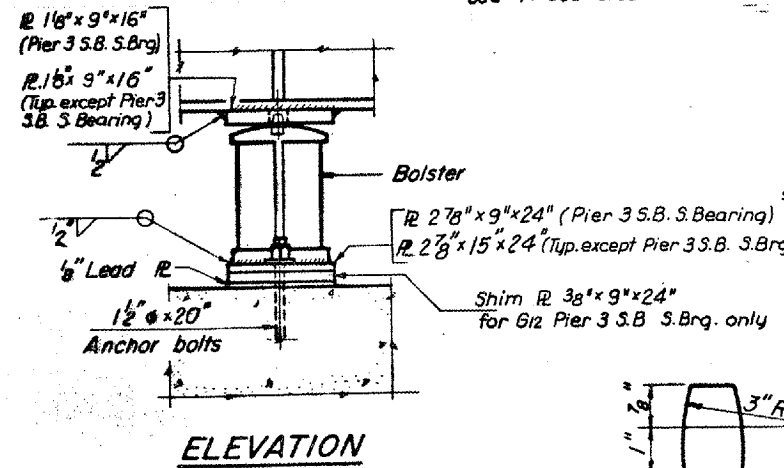
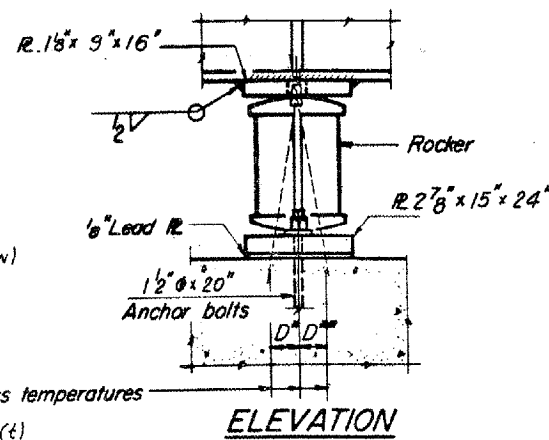
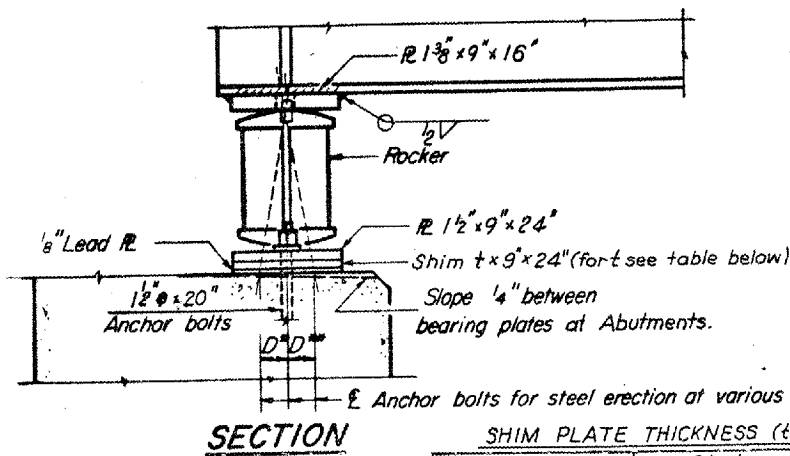


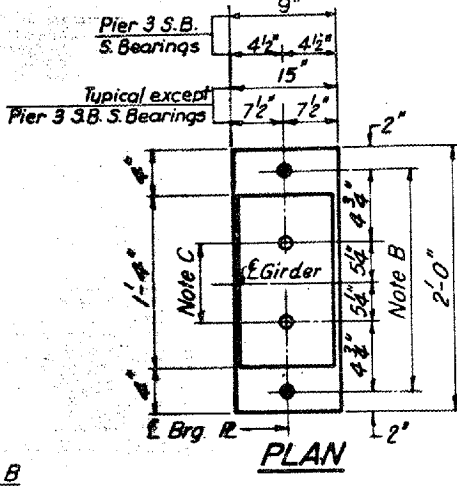
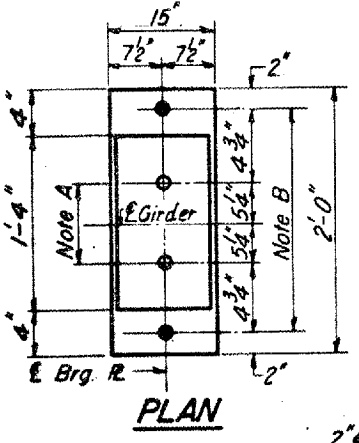
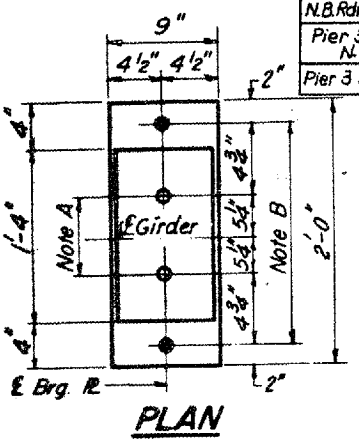
BRIDGE NO 3 & 4 - 072-0114/0115 I 474 OVER KICKAPOO CREEK & RAILROAD

F.A. RTE.	SECTION	COUNTY	TOTAL SHEETS	SHEET NO.
VAR 04 BRDG PNT 07	VARIOUS	ILLINOIS	17	136
STA. TO STA.		FED. ROAD DIST. NO. 4 ILLINOIS		



SHIM PLATE THICKNESS (t)

Location	Girder						
	G2	G3	G4	G5	G6	G7	G11
Pier 4 S.Brg. N.B.Rdwy. N.Brg.	1/8	1/8	1/8	-	-	-	-
Pier 3 S.B.Rdwy. N.Brg.	-	-	-	1/4	1/4	1/4	-
Pier 3 S.B.Rdwy. S.Brg.	-	-	-	-	-	-	3/8



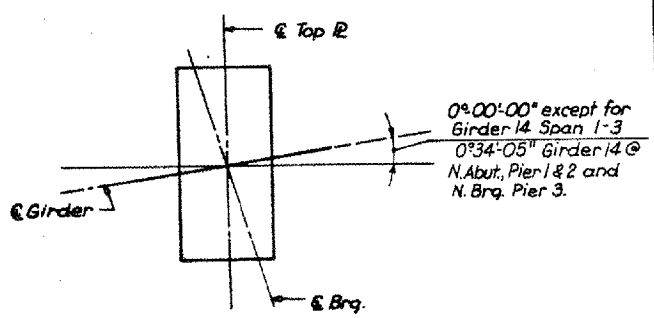
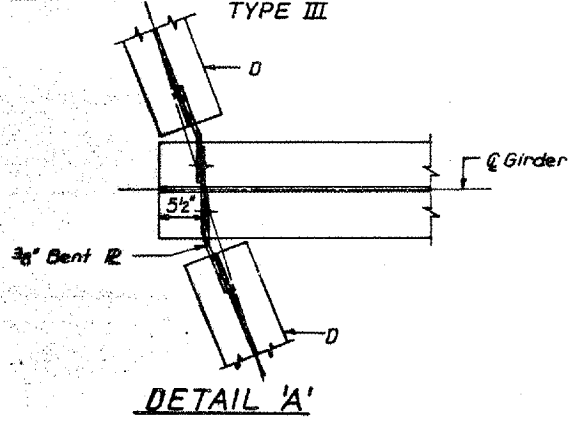
AT ABUTMENTS AND PIER 3 N.B., 3 S.B., N.BRG. & 4 TYPE I
NOTES ON SETTING OF ANCHOR BOLTS AT EXP. BRGS.

- a) D^* (Side of brg away from fixed brg.)
 $D^* = \frac{1}{8}$ " per each 100' of expansion for every 15° fall below the normal temp. of 50°F.
- D^{**} (Side of brg. toward fixed brg.)
 $D^{**} = \frac{1}{8}$ " per each 100' of expansion for every 15° rise above the normal temp. of 50°F.

NOTE E
 S. Bearing Pier 3 or N. Bearing Pier 4 should have a hold down Strap. See Detail on Sheet 11.

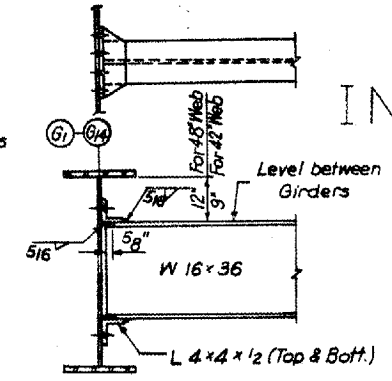
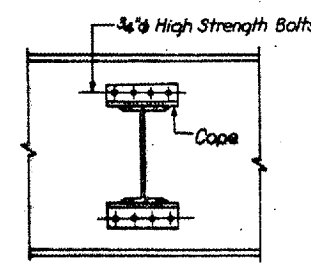
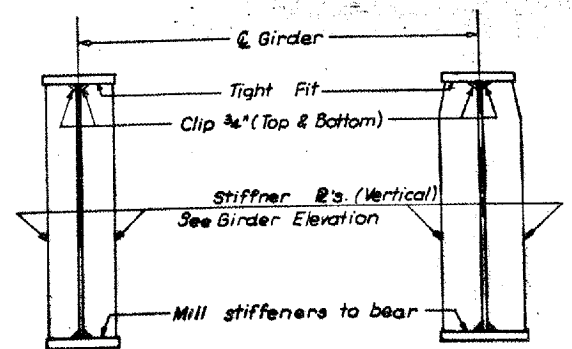
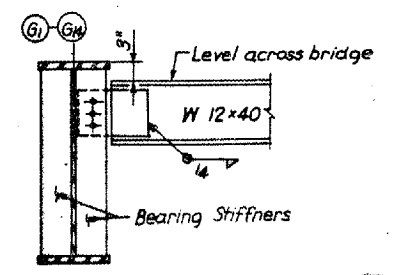
AT PIER 1, 5, 8, 7 TYPE II
BEARING ASSEMBLY DETAILS

AT PIER 2, 3A, 6 AND PIER 3 S.B. S.BEARINGS TYPE III



FOR INFORMATION ONLY

- b) After Girder have been erected and dimensions D^* or D^{**} determined, holes shall be drilled and anchor bolts shall be grouted in place. All fixed anchor bolts may be built into the masonry.



STATE OF ILLINOIS
 DEPARTMENT OF TRANSPORTATION
STRUCTURAL STEEL
 F.A.I. ROUTE 474
 OVER
 KICKAPOO CREEK & B.N. R.R.
 STA. 67 + 00.00

Add SHEET