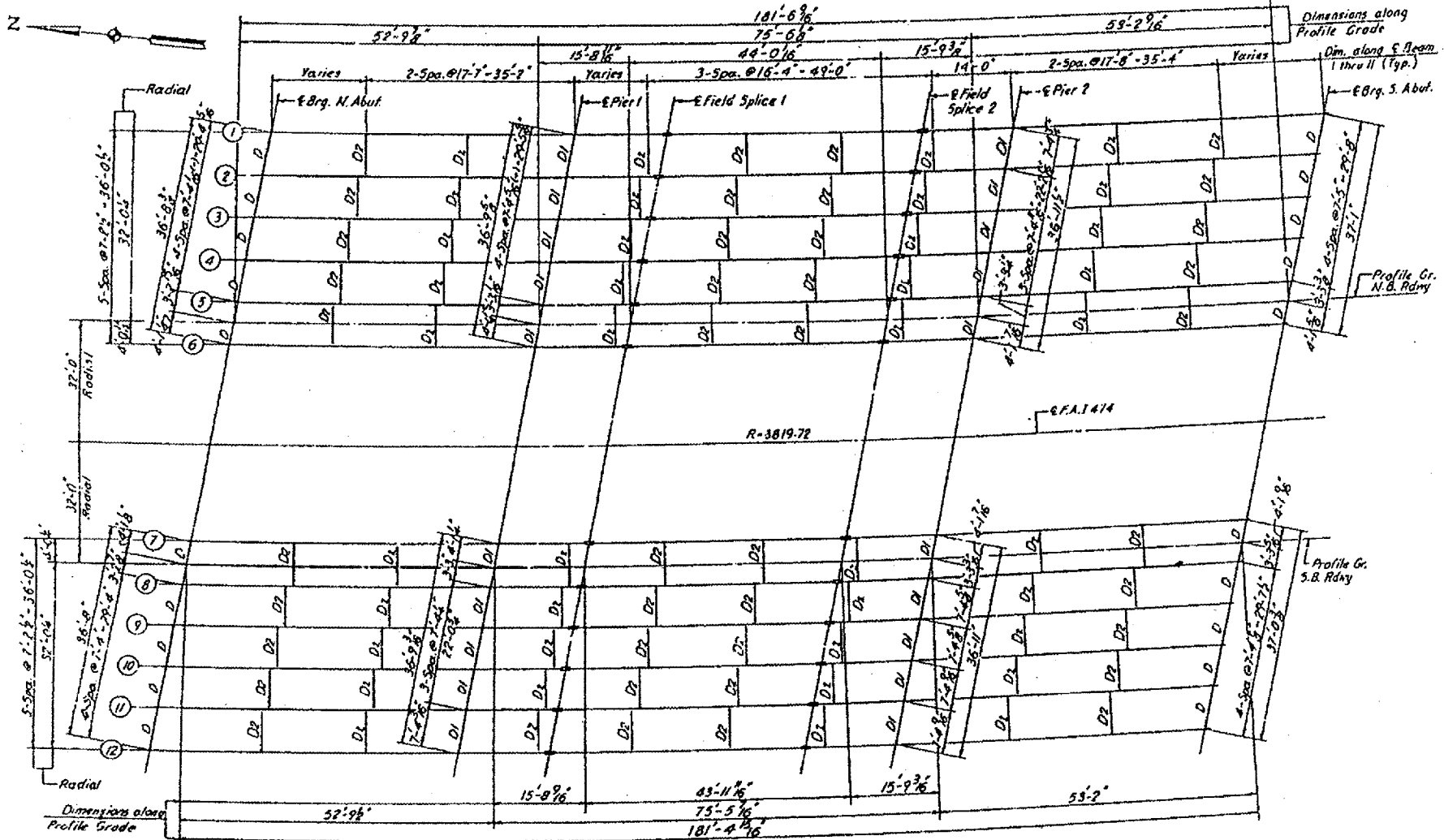
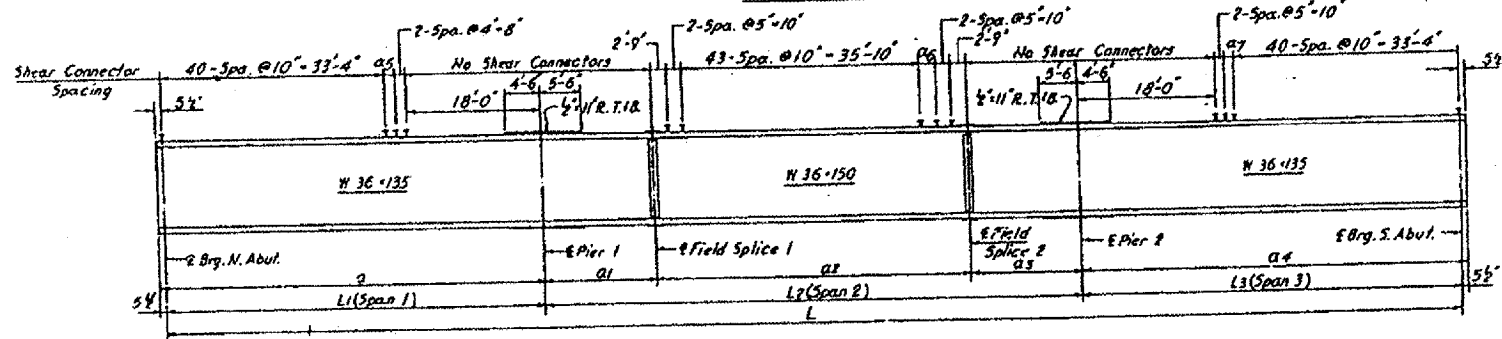


# BRIDGE NO 5 & 6 - 072-0124/125 I 474 OVER RAILROAD



FRAMING PLAN



BEAM ELEVATION

F.A. RTE.	SECTION	COUNTY	TOTAL SHEETS	SHEET NO.
VAR	D4 BRDG PNT 07	VARIOUS	17	15
STA.		TO STA.		
FED. ROAD DIST. NO. 4		ILLINOIS		

FOR  
INFORMATION ONLY

ILLINOIS DEPARTMENT OF TRANSPORTATION  
BRIDGE NO 5 & 6  
FRAMING PLAN

DATE 07-26-2006

DRAWN BY