

68672

Total Sheets 20
Sheet No. 1

PROJECT ENGINEER: JIM MILLER 309-671-3451

DESIGNER: TOM INGLIS 309-671-3333

INDEX OF SHEETS

- 1) COVER SHEET
- 2) COMMITMENT & GENERAL NOTES
- 3) SUMMARY OF QUANTITIES
- 4) SUMMARY OF QUANTITIES CONTINUED
- 5) PROJECT LOCATION MAP
- 6) BRIDGE NO 1- PLAN & ELEVATION
- 7) BRIDGE NO 1- FRAMING DETAILS
- 8) BRIDGE NO 2- PLAN & ELEVATION
- 9) BRIDGE NO 2- FRAMING DETAILS
- 10) BRIDGE NO 3&4- PLAN & ELEVATION
- 11) BRIDGE NO 3&4- FRAMING DETAILS CONTINUED
- 12) BRIDGE NO 3&4- FRAMING DETAILS
- 13) BRIDGE NO 3&4- FRAMING DETAILS CONTINUED
- 14) BRIDGE NO 5&6-PLAN & ELEVATION
- 15) BRIDGE NO 5&6- FRAMING DETAILS
- 16) BRIDGE NO 7- PLAN & ELEVATION
- 17) BRIDGE NO 7- FRAMING DETAILS

TRAFFIC CONTROL STANDARDS

- 701001-01 701401-03
- 701006-02 701402-05
- 701101-01 701411-03
- 701106-01 701601-04
- 701400-02 702001-06

CONTRACT NO. 68672
CATALOG NO. 033426-00D

J.U.L.I.E.
 JOINT UTILITY LOCATION INFORMATION FOR EXCAVATION
 1-800-892-0123

STATE OF ILLINOIS
DEPARTMENT OF TRANSPORTATION
DIVISION OF HIGHWAYS

PROPOSED HIGHWAY PLANS

ROUTE: VARIOUS
SECTION: D4 BRIDGE PAINTING 2007
PROJECT: C-94-002-07
COUNTY: TAZEWELL & PEORIA

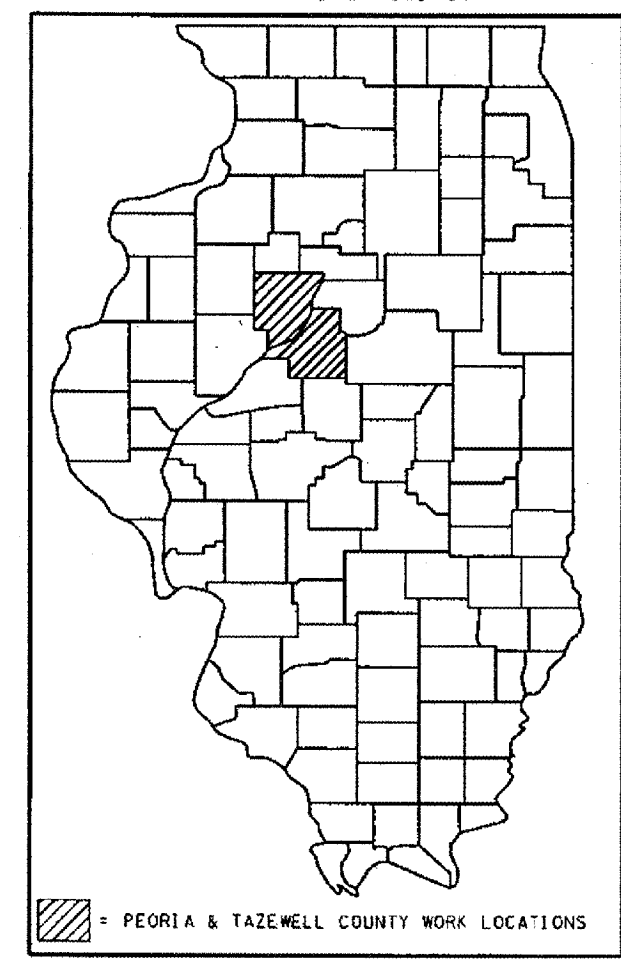
DESCRIPTION OF PROJECT:
CLEAN & PAINT VARIOUS STRUCTURES
IN PEORIA AND TAZEWELL COUNTY.

- BRIDGE 1- US RT 24 OVER KICKAPOO CREEK.**
- BRIDGE 2- US RT 150 OVER IL RT 6.**
- BRIDGES 3 & 4- I 474 OVER KICKAPOO CREEK & RR.**
- BRIDGES 5 & 6- I 474 OVER RAILROAD.**
- BRIDGE 7- IL 8,116, 29 OVER IL 29**

SEE LOCATION MAP ON PAGE 5

PRINTED BY THE AUTHORITY
 OF THE STATE OF ILLINOIS

D-94-001-07



STATE OF ILLINOIS
DEPARTMENT OF TRANSPORTATION
DIVISION OF HIGHWAYS

SUBMITTED August 25, 2006

[Signature]
 DEPUTY DIRECTOR OF HIGHWAYS,
 REGION ENGINEER

PASSED October 13, 2006
[Signature]
 ENGINEER OF DESIGN

APPROVED October 13, 2006
[Signature]
 DIRECTOR OF HIGHWAYS

COMMITMENTS

No commitments have been made for this project.

F.A. RTE.	SECTION	COUNTY	TOTAL SHEETS	SHEET NO.
VAR	D4 BRDG PNT 07	VARIOUS	17	2
STA.		TO STA.		
FED. ROAD DIST. NO. 4		ILLINOIS		

GENERAL NOTES

Cleaning & painting of the existing structural steel shall be as specified in the special provision for "Cleaning and Painting Existing Steel Structures". All beams, bearings, and other structural steel shall be cleaned per Near White Blast Cleaning- SSPC SP10 according to the following schedule:

Bridge No. 1, 3, 4, 5, 6 - All beams, bearings, brackets, and other structural steel within five (5) feet (as measured along the centerline of the beam) of either side of the deck joints.

Bridge No. 1, 3, 4, 5, 6 - The fascias shall be cleaned. Limit of work shall include the following: the outer web, top flange, bottom flange and visible bottom flange parallel with the ground.

Bridge No. 2- Entire structure minus the newly widened beams. (The framing plan on page 9 is the scope of work.)

Bridge No. 7- Entire structure.

The designated paint system shall be Paint System 1- OZ/E/U or Paint System 5- MCU.

The final finish coat for the interior and exterior shall be according to the following schedule:

Bridge No. 1, 3, 4, 5, 6 -All surfaces cleaned shall be Interstate Green (Munsell No. 7.5G 4/8).

Bridge No. 2 -All exterior surfaces cleaned shall be Interstate Green (Munsell No. 7.5G 4/8).

All interior surfaces cleaned shall be Light Gray (Munsell No. 5b 7/1).

Bridge No. 7 -All surfaces cleaned shall be Blue (Munsell No. 10B 3/6).

QP1 & QP2 REQUIREMENTS ARE REQUIRED FOR THIS CONTRACT.

TWO (2) AIR MONITORS WILL BE REQUIRED AT BRIDGE NO. 2 & 7.

ILLINOIS DEPARTMENT OF TRANSPORTATION
COMMITMENTS &
GENERAL NOTES

DATE 08-24-2006

DRAWN BY

SUMMARY OF QUANTITIES

F.A. RTE.	SECTION	COUNTY	TOTAL SHEETS	SHEET NO.
VAR	D4 BRDG PNT 07	VARIOUS	17	3
STA.		TO STA.		
FED. ROAD DIST. NO. 4		ILLINOIS		

100% STATE SFTY- 2A

CODE NO.	ITEM	UNIT	100% STATE SFTY- 2A		TOTAL
			TAZEVELL	PEORIA	
			URBAN	URBAN	
50600600	CLEANING AND PAINTING STEEL BR #1	L. SUM		1.0	1.0
50600700	CLEANING AND PAINTING STEEL BR #2	L. SUM		1.0	1.0
50600800	CLEANING AND PAINTING STEEL BR #3	L. SUM		1.0	1.0
50600900	CLEANING AND PAINTING STEEL BR #4	L. SUM		1.0	1.0
50601000	CLEANING AND PAINTING STEEL BR #5	L. SUM		1.0	1.0
50601100	CLEANING AND PAINTING STEEL BR #6	L. SUM		1.0	1.0
50601200	CLEANING AND PAINTING STEEL BR #7	L. SUM	1.0		1.0
50606401	CONTAINMENT & DISPOSAL OF LEAD PAINT CLEANING RESIDUES NO 1	L. SUM		1.0	1.0
50606402	CONTAINMENT & DISPOSAL OF LEAD PAINT CLEANING RESIDUES NO 2	L. SUM		1.0	1.0
50606403	CONTAINMENT & DISPOSAL OF LEAD PAINT CLEANING RESIDUES NO 3	L. SUM		1.0	1.0
50606404	CONTAINMENT & DISPOSAL OF LEAD PAINT CLEANING RESIDUES NO 4	L. SUM		1.0	1.0
50606405	CONTAINMENT & DISPOSAL OF LEAD PAINT CLEANING RESIDUES NO 5	L. SUM		1.0	1.0
50606406	CONTAINMENT & DISPOSAL OF LEAD PAINT CLEANING RESIDUES NO 6	L. SUM		1.0	1.0

ILLINOIS DEPARTMENT OF TRANSPORTATION

SUMMARY OF QUANTITIES

DATE 07-26-2006

DRAWN BY

SUMMARY OF QUANTITIES CONTINUED

F.A. RTE.	SECTION	COUNTY	TOTAL SHEETS	SHEET NO.
VAR	D4 BRDG PNT 07	VARIOUS	17	4
STA.		TO STA.		
FED. ROAD DIST. NO. 4		ILLINOIS		

100% STATE SFTY- 2A

CODE NO.	ITEM	UNIT	100% STATE SFTY- 2A		TOTAL
			TAZEWELL URBAN	PEORIA URBAN	
50606407	CONTAINMENT & DISPOSAL OF LEAD PAINT CLEANING RESIDUES NO 7	L. SUM	1.0		1.0
67100100	MOBILIZATION	L. SUM	0.1	0.9	1.0
70100420	TRAFFIC CONTROL AND PROTECTION, STANDARD 701411	EACH	2.0	4.0	6.0
70100800	TRAFFIC CONTROL AND PROTECTION, STANDARD 701401	L. SUM		1.0	1.0
70100805	TRAFFIC CONTROL AND PROTECTION, STANDARD 701402	L. SUM		1.0	1.0
70102630	TRAFFIC CONTROL AND PROTECTION, STANDARD 701601	L. SUM	0.5	0.5	1.0
X0323984	PORTABLE TEMPORARY BARRIER SYSTEM	FOOT		286	286
X0323985	RELOCATE PORTABLE TEMPORARY BARRIER SYSTEM	FOOT		676	676
Z0048665	RAIROAD PROTECTIVE LIABILITY INSURANCE	L. SUM		1.0	

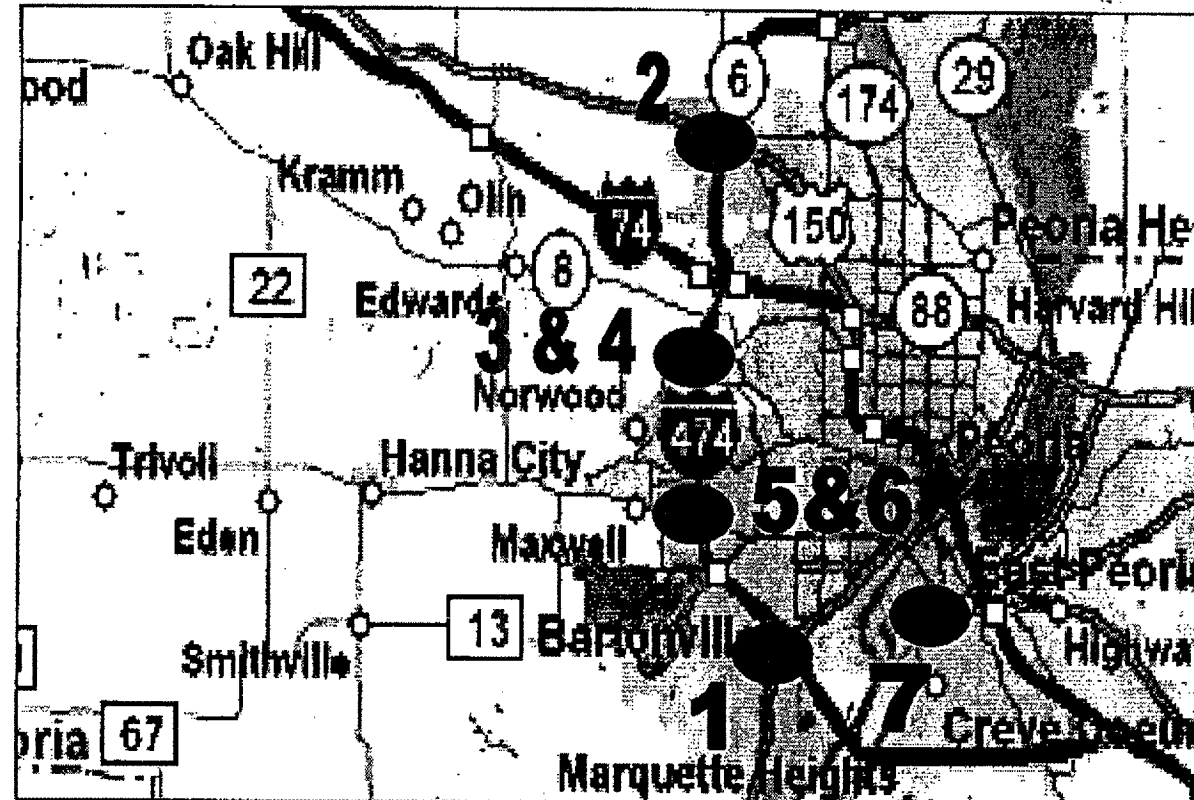
ILLINOIS DEPARTMENT OF TRANSPORTATION
 SUMMARY OF QUANTITIES
 CONTINUED

DATE 07-26-2006

DRAWN BY

LOCATION MAP

F.A. RTE.	SECTION	COUNTY	TOTAL SHEETS	SHEET NO.
VAR	D4 BRDG PNT 07	VARIOUS	17	5
STA.		TO STA.		
FED. ROAD DIST. NO. 4		ILLINOIS		



- BRIDGE NO. 1- US 24 OVER KICKAPOO CREEK NEAR BARTONVILLE
- BRIDGE NO. 2- US 150 OVER IL RT 6
- BRIDGE NO. 3 & 4- I 474 OVER BNSF RR & KICKAPOO CREEK
- BRIDGE NO. 5 & 6- I 474 OVER CHICAGO NORTHWESTERN
- BRIDGE NO. 7- IL 8,116,29 OVER IL 29 (MAIN STREET) IN EAST PEORIA

ILLINOIS DEPARTMENT OF TRANSPORTATION

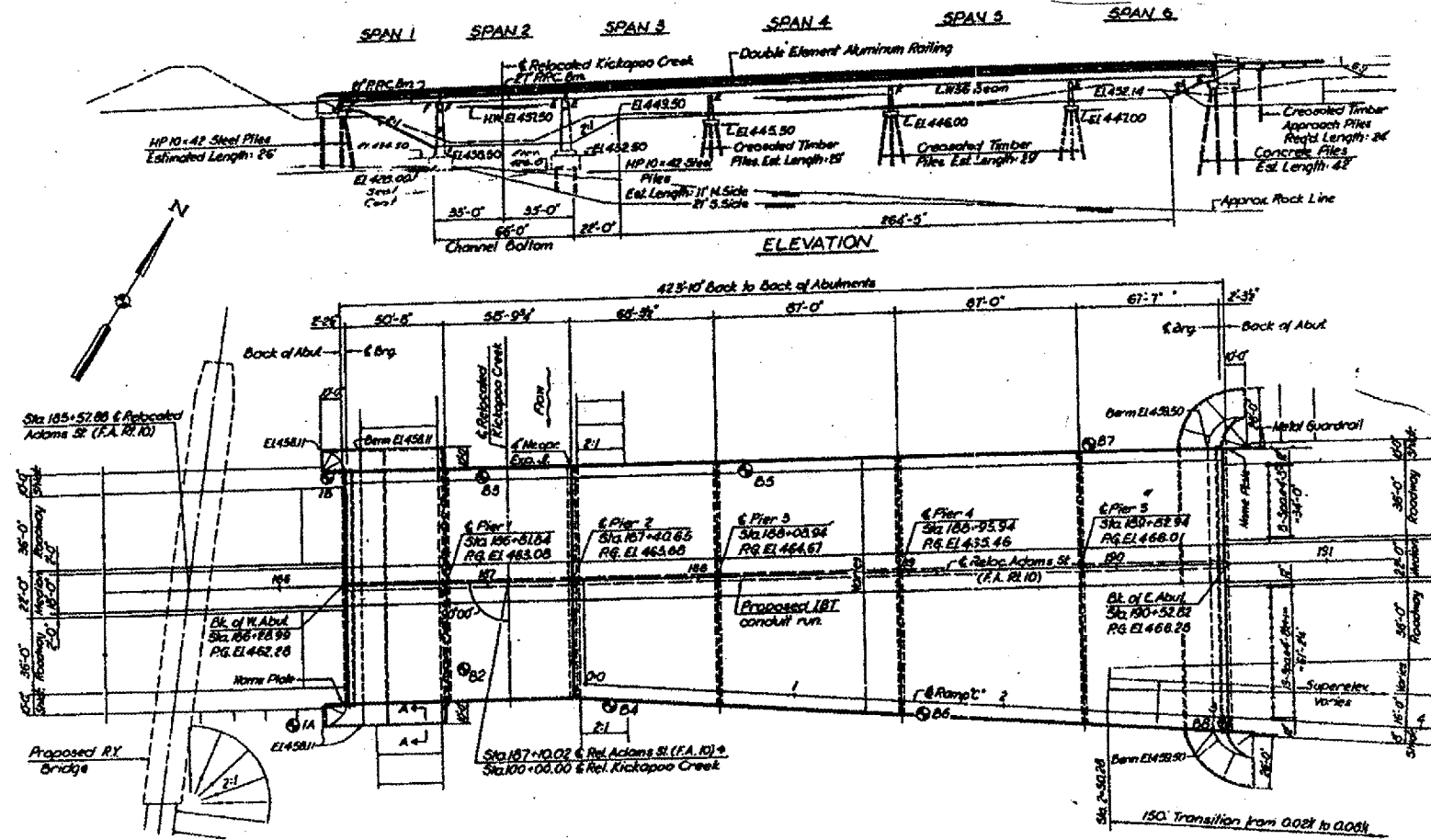
LOCATION MAP

DATE 07-26-2006

DRAWN BY

BRIDGE NO 1- 072-0134 US RT 24 OVER KICKAPOO CREEK

F.A. RTE.	SECTION	COUNTY	TOTAL SHEETS	SHEET NO.
VAR	04 BRDG PNT 07	VARIOUS	17	6
STA.		TO STA.		
FED. ROAD DIST. NO. 4		ILLINOIS		

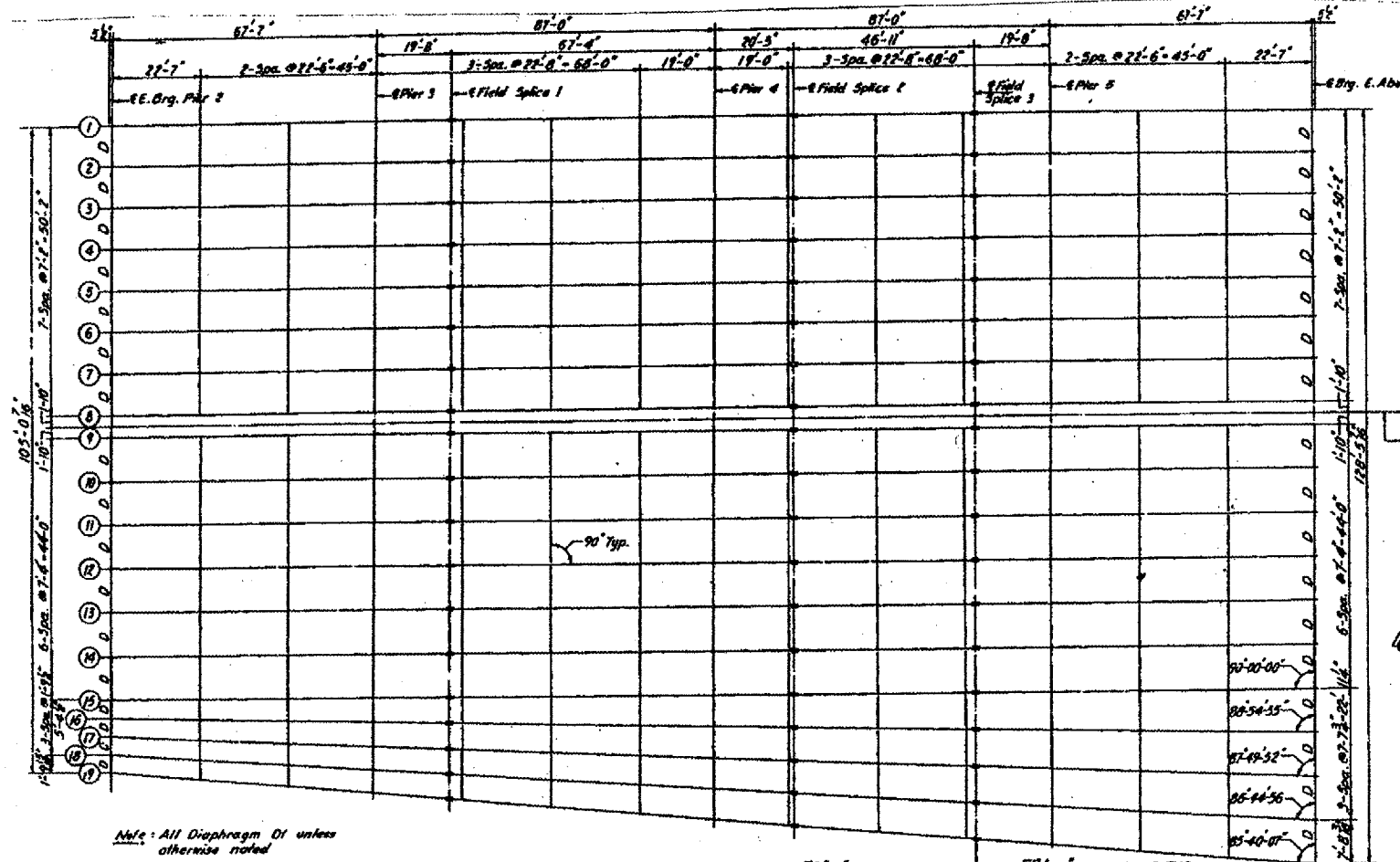


FOR INFORMATION ONLY

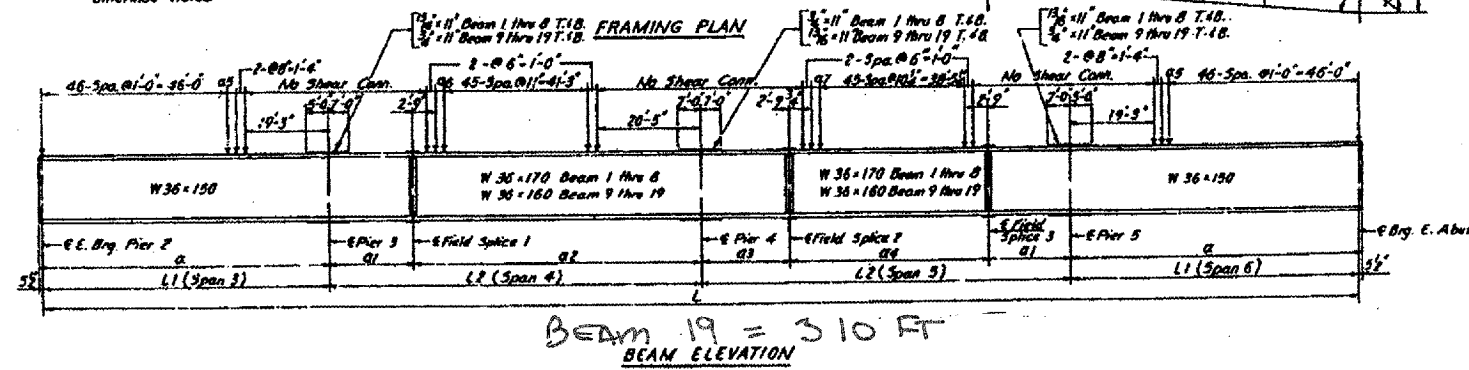
ILLINOIS DEPARTMENT OF TRANSPORTATION
 BRIDGE NO 1
 PLAN & ELEVATION
 DATE 07-26-2006 DRAWN BY

BRIDGE NO 1- 072-0134 US RT 24 OVER KICKAPOO CREEK

F.A. RTE.	SECTION	COUNTY	TOTAL SHEETS	SHEET NO.
VAR	D4 BRDC PNT 07	VARIOUS	17	7
STA.		TO STA.		
FED. ROAD DIST. NO. 4		ILLINOIS		



Note: All Diaphragm D1 unless otherwise noted

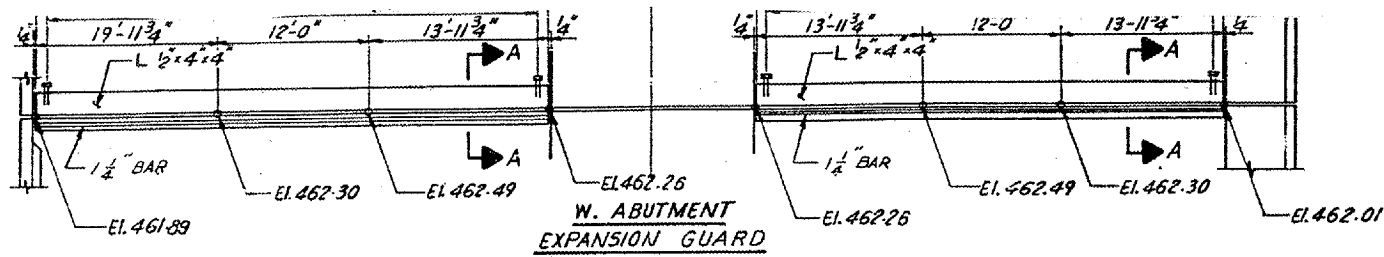


ILLINOIS DEPARTMENT OF TRANSPORTATION
 BRIDGE NO 1
 FRAMING PLAN
 DATE 07-26-2006
 DRAWN BY

FOR INFORMATION ONLY

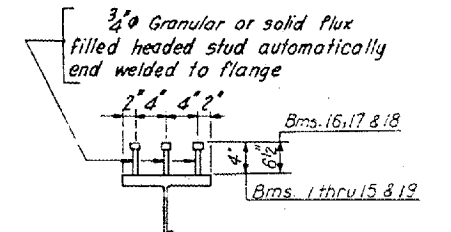
BRIDGE NO 1- 072-0134 US RT 24 OVER KICKAPOO CREEK

F.A. RTE.	SECTION	COUNTY	TOTAL SHEETS	SHEET NO.
VAR	D4 BRDG PNT 07	VARIOUS	17	7A
STA. TO STA.				
FED. ROAD DIST. NO. 4 ILLINOIS				

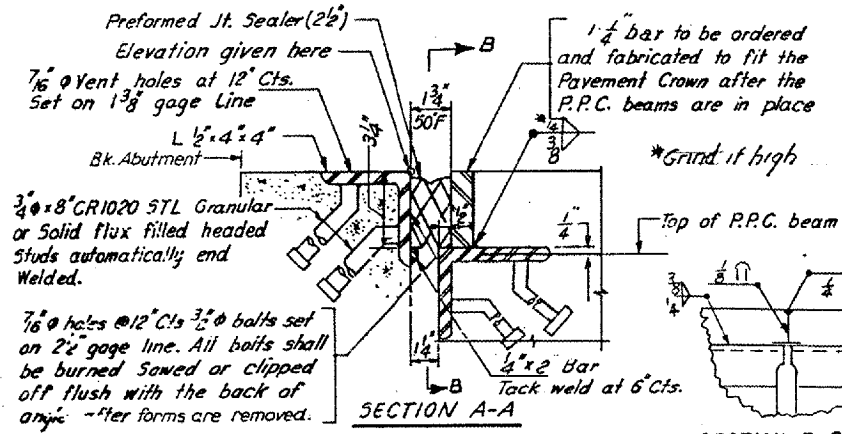


Shim Plate thickness (t)

Location	Bms. 1 & 8	Bm. 5	Bm. 6	Bm. 7	Bm. 13
Pier 2	1/2"	1 3/4"	1 1/2"	1"	1/2"
Pier 3	3/8"		1/2"		3/8"
Pier 4	1/2"		3/8"		1/2"
Pier 5	3/8"				

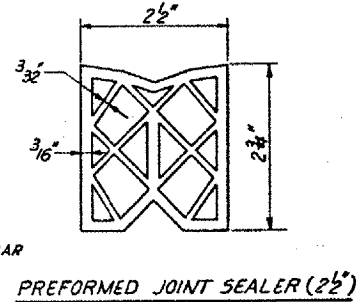


SHEAR CONNECTOR DETAIL
 No. Reg'd = 9,696-(4"x3/4"φ)
 1,818-(6"x3/4"φ)



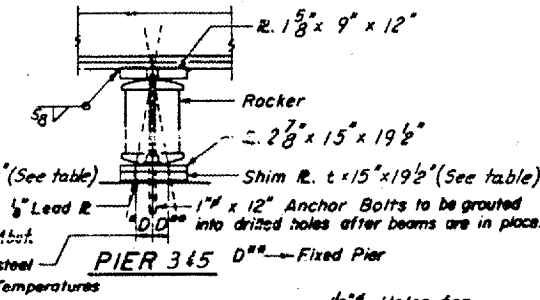
Preformed Jt. Sealer (2 1/2")
 Elevation given here
 7/16" φ Vent holes at 12" Cts.
 Set on 1 3/8" gage line
 L 1/2" x 4" x 4"
 Bk. Abutment
 3/4" x 8" CR1020 STL Granular or Solid Flux filled headed studs automatically end welded.
 7/16" φ holes @ 12" Cts. 3/16" φ bolts set on 2" gage line. All bolts shall be burned sawed or clipped off flush with the back of angle after forms are removed.

W. ABUTMENT EXPANSION GUARD

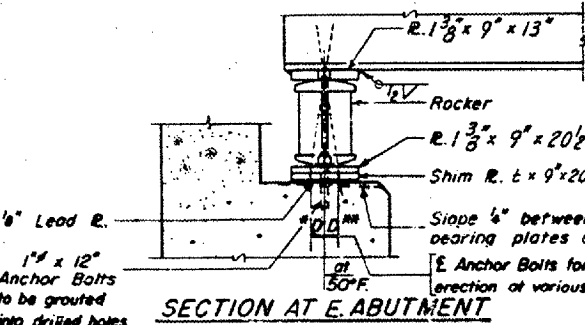


DETAIL OF TOP BEARING R. TO BEAM CONNECTION

SECTION B-B



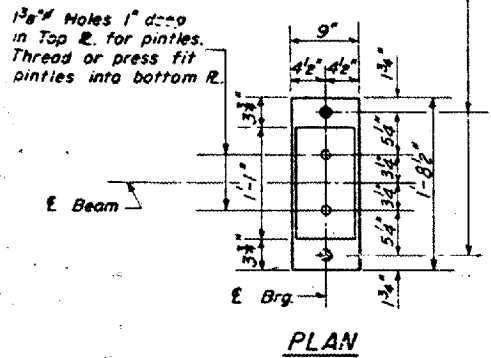
SECTION B-B



SECTION AT E. ABUTMENT

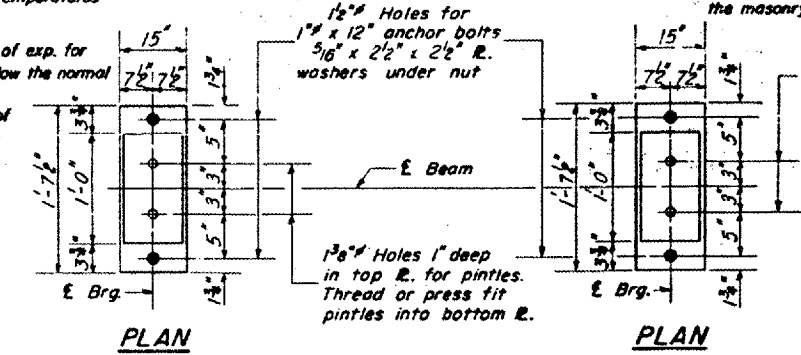
1" x 12" Anchor Bolts to be grouted into drilled holes after beams are in place.

"D" = 7/100 ft. of exp. for every 15" below the normal temp. of 50°
 "D" = 1/100 ft. of exp. for every 15" above the normal temp. of 50°



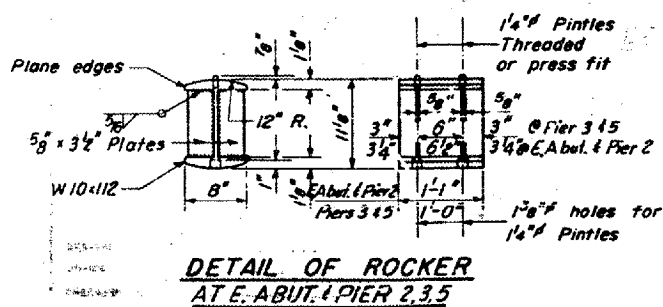
PLAN

DETAIL OF PINTLE

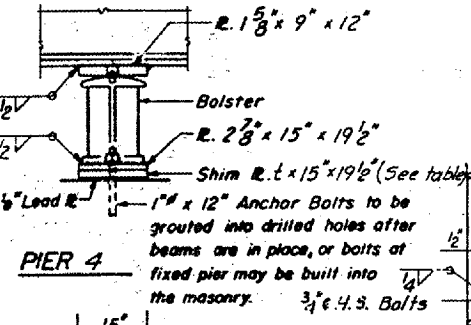


PLAN

PLAN



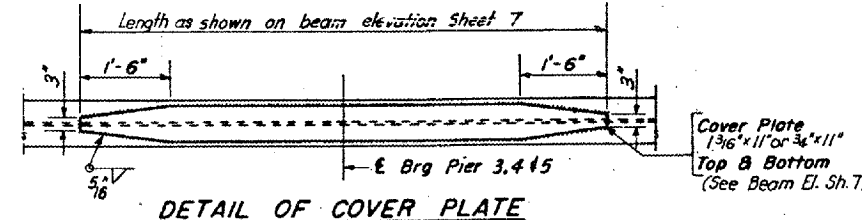
DETAIL OF BOLSTER AT PIER 4



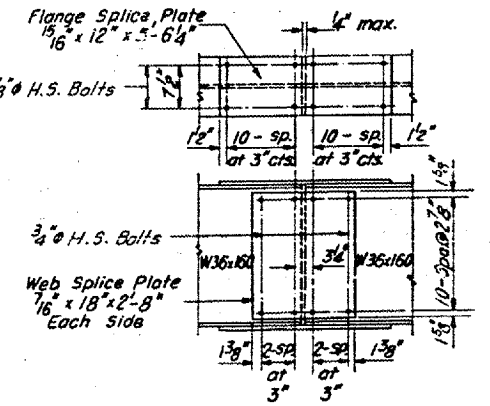
DETAIL OF COVER PLATE

DIAPHRAGM D
34- Required

DIAPHRAGM D1
221-Required



DETAIL OF SPICE 2
Beams 1 thru 8



DETAIL OF SPICE 2
Beams 9 thru 19

DETAIL OF SPICE 1 & 3

ADD SHEET

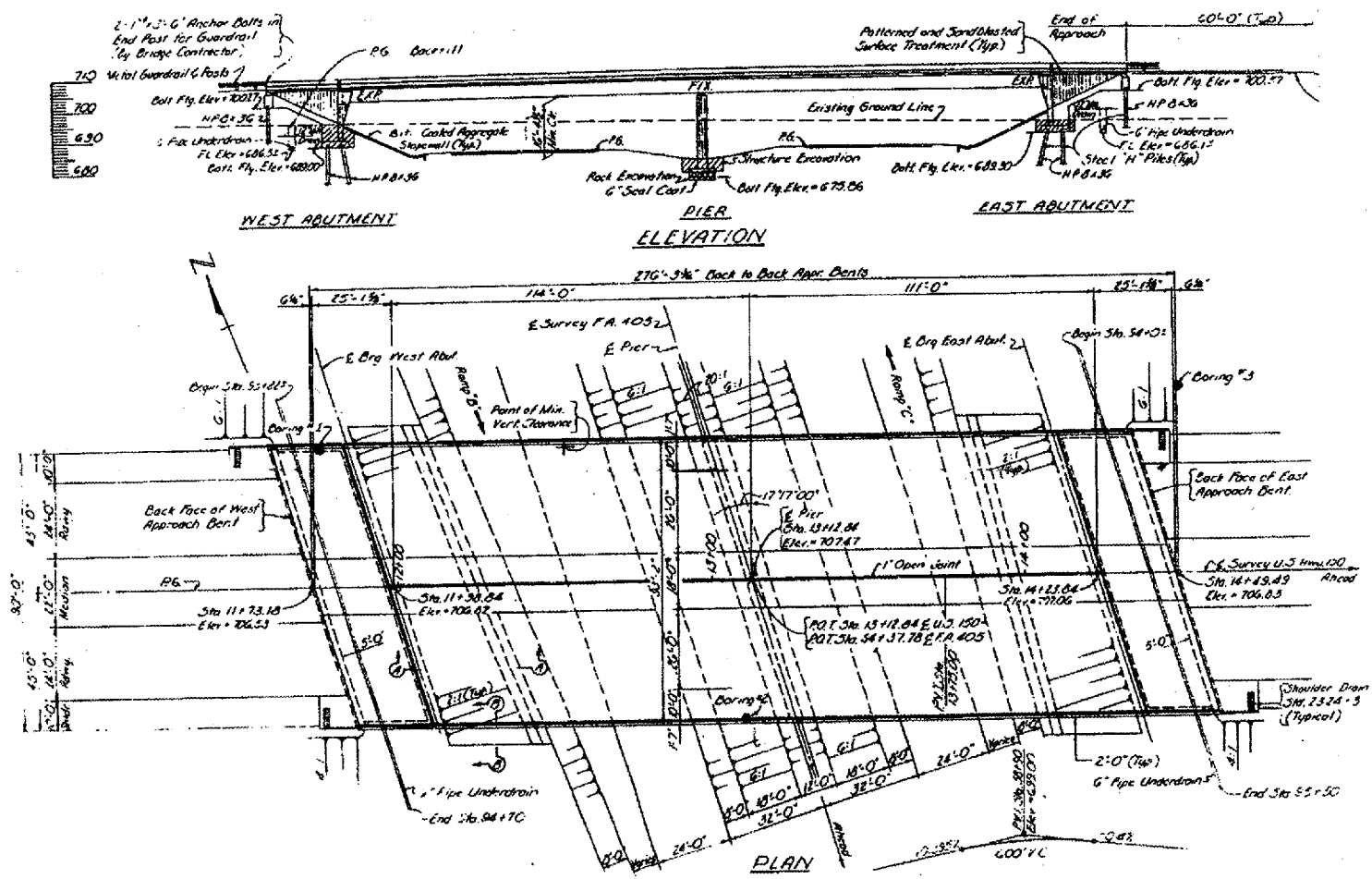
FOR INFORMATION ONLY

STATE OF ILLINOIS
 DEPARTMENT OF TRANSPORTATION
 STRUCTURAL STEEL
 RELOCATED ADAMS STREET (FA 10)
 OVER
 KICKAPOO CREEK
 STA. 187+10.02
 PEORIA COUNTY SECTION 48-B
 CHRISTIAN-ROGE AND ASSOC.
 ENGINEERS
 CHICAGO ILLINOIS

SHEET 8 of 24

BRIDGE NO 2- 072-0140 US RT 150 OVER IL RT 6

F.A. RTE.	SECTION	COUNTY	TOTAL SHEETS	SHEET NO.
VAR	D4 BROG PNT 07	VARIOUS	17	8
STA.		TO STA.		
FED. ROAD DIST. NO. 4		ILLINOIS		

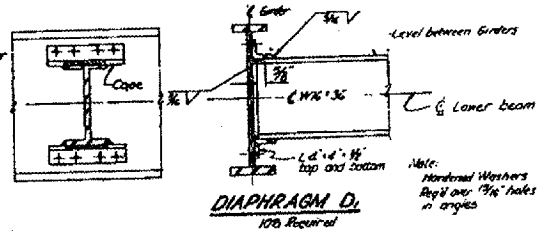
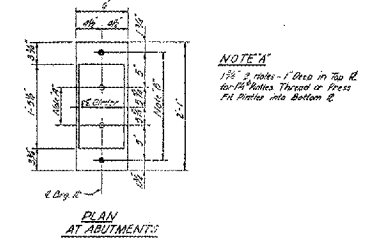
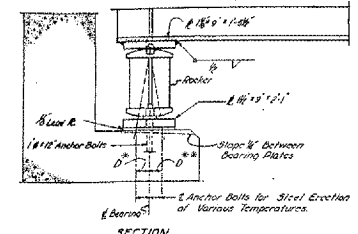
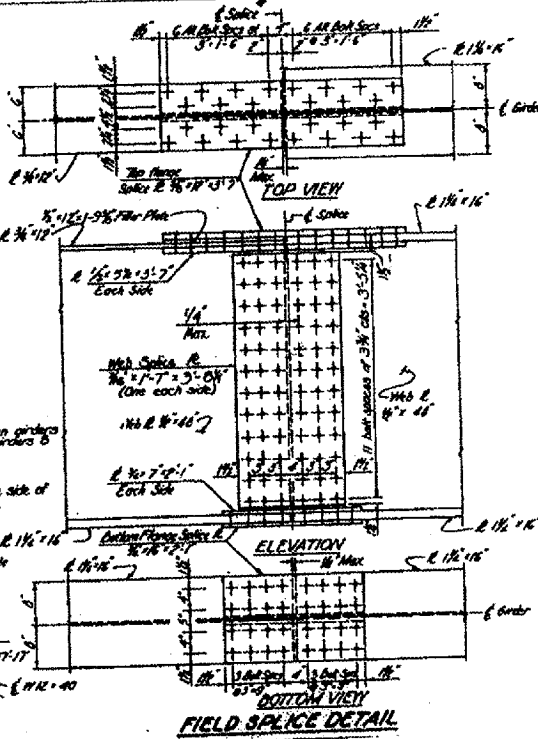
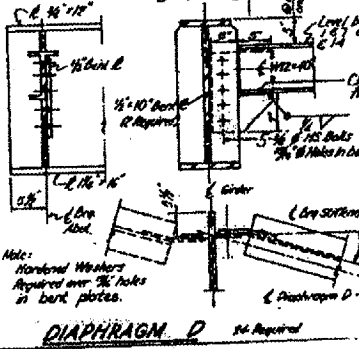
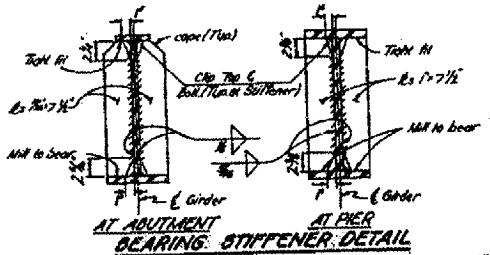
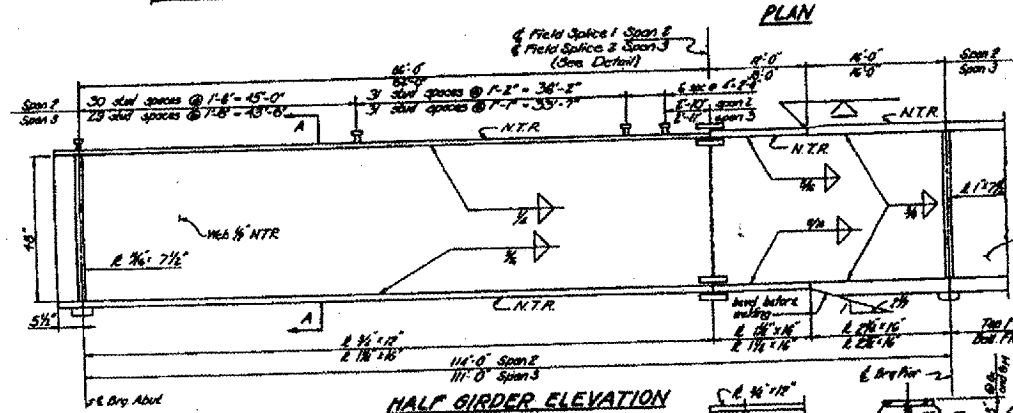
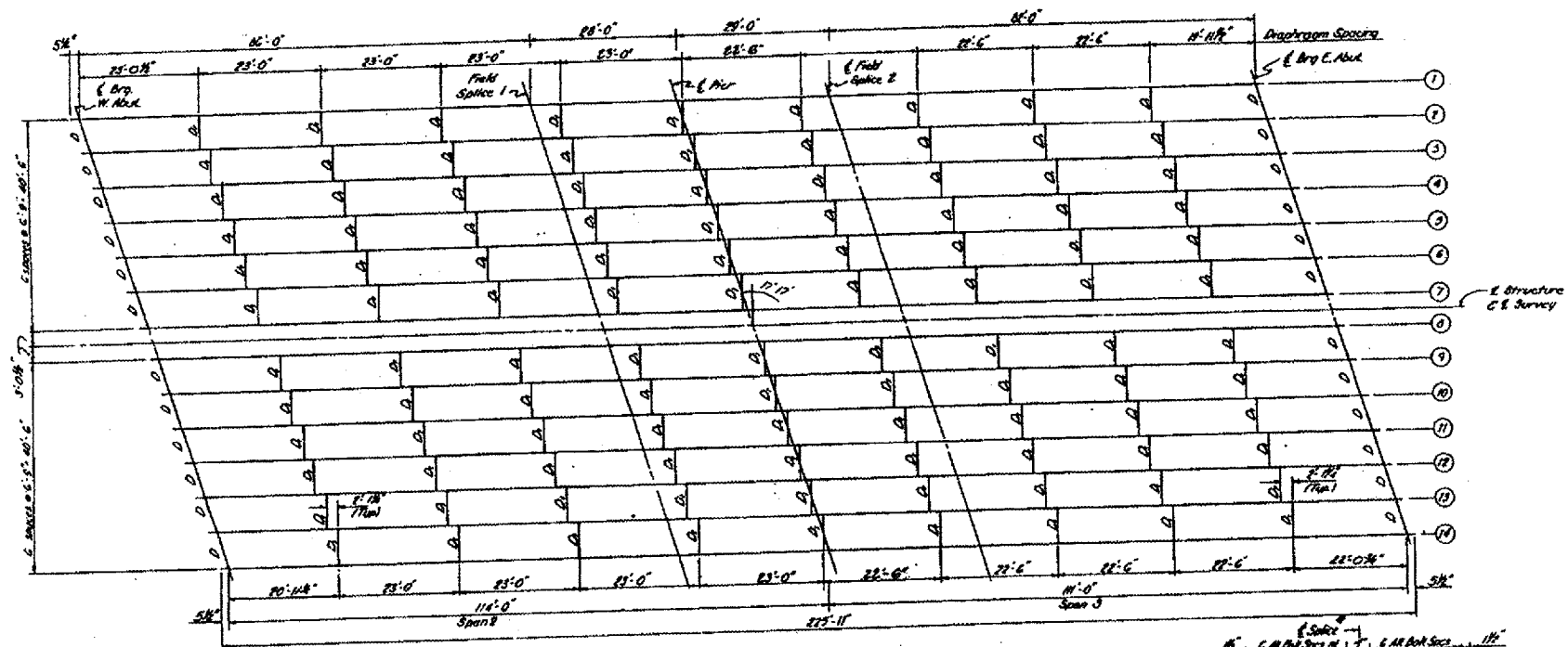


FOR
INFORMATION ONLY

ILLINOIS DEPARTMENT OF TRANSPORTATION
BRIDGE NO 2
PLAN & ELEVATION
DATE 07-26-2006 DRAWN BY

BRIDGE NO 2- 072-0140 US RT 150 OVER IL RT 6

F.A. RTE.	SECTION	COUNTY	TOTAL SHEETS	SHEET NO.
VAR	04 BRDG PNT 07	VARIOUS	17	9
STA.		TO STA.		
FED. ROAD DIST. NO. 4		ILLINOIS		



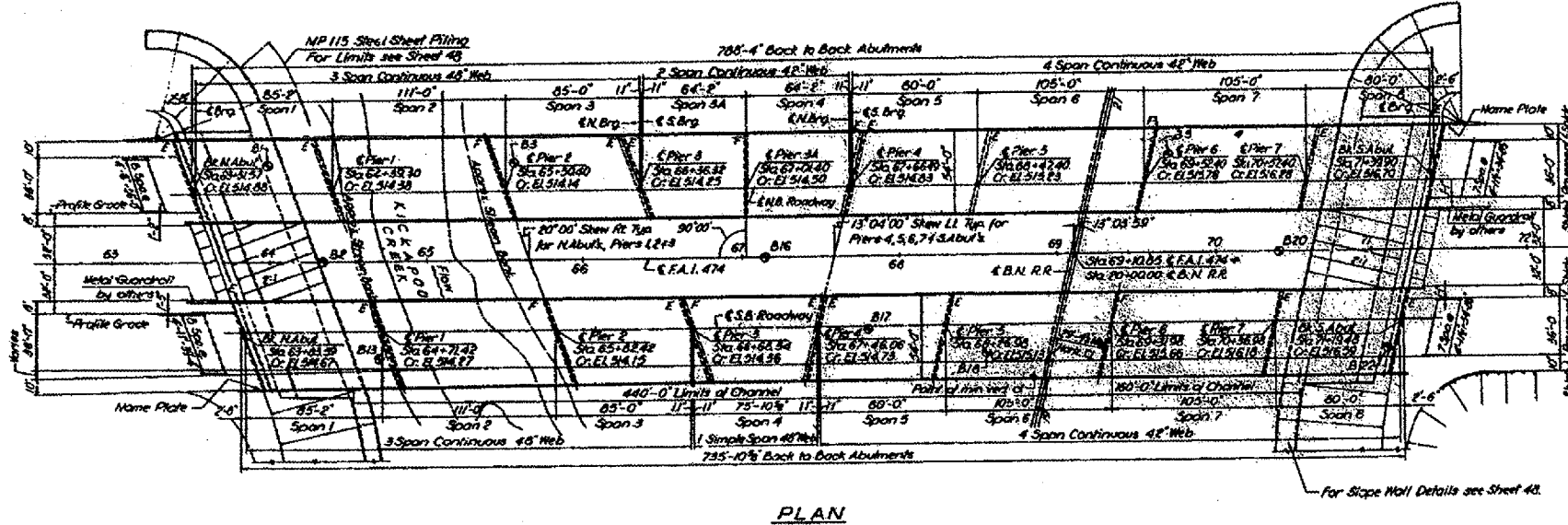
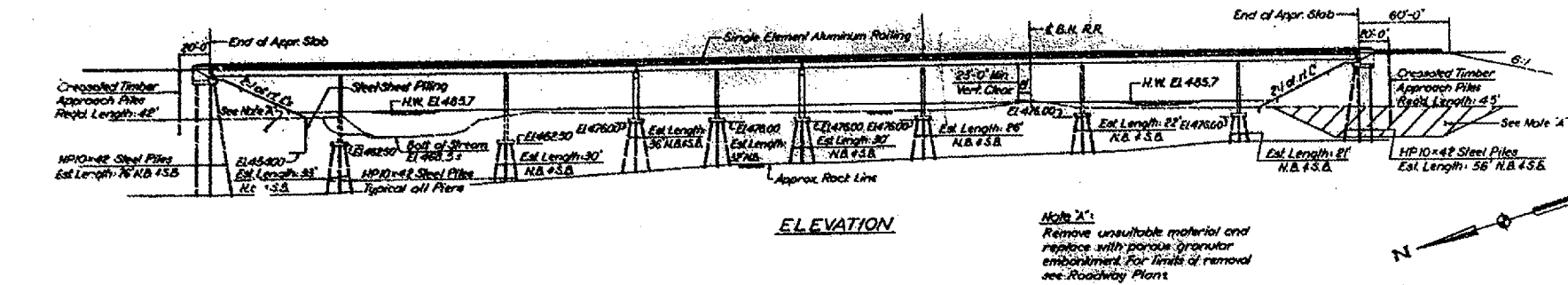
FOR INFORMATION ONLY

ILLINOIS DEPARTMENT OF TRANSPORTATION
BRIDGE NO 2
FRAMING PLAN

DATE 07-26-2006 DRAWN BY

BRIDGE NO 3 & 4- 072-0114/0115 I 474 OVER KICKAPOO CREEK & RAILROAD

F.A. RTE.	SECTION	COUNTY	TOTAL SHEETS	SHEET NO.
VAR	D4 BRDG PNT 07	VARIOUS	17	10
STA.		TO STA.		
FED. ROAD DIST. NO. 4		ILLINOIS		



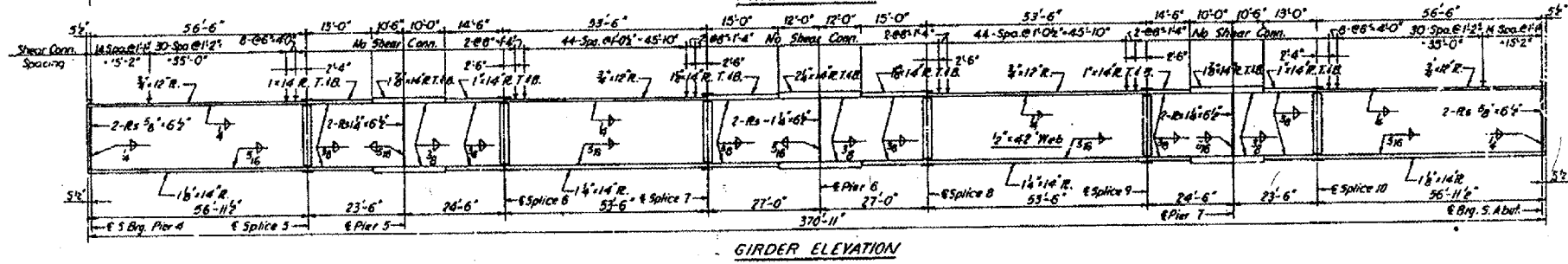
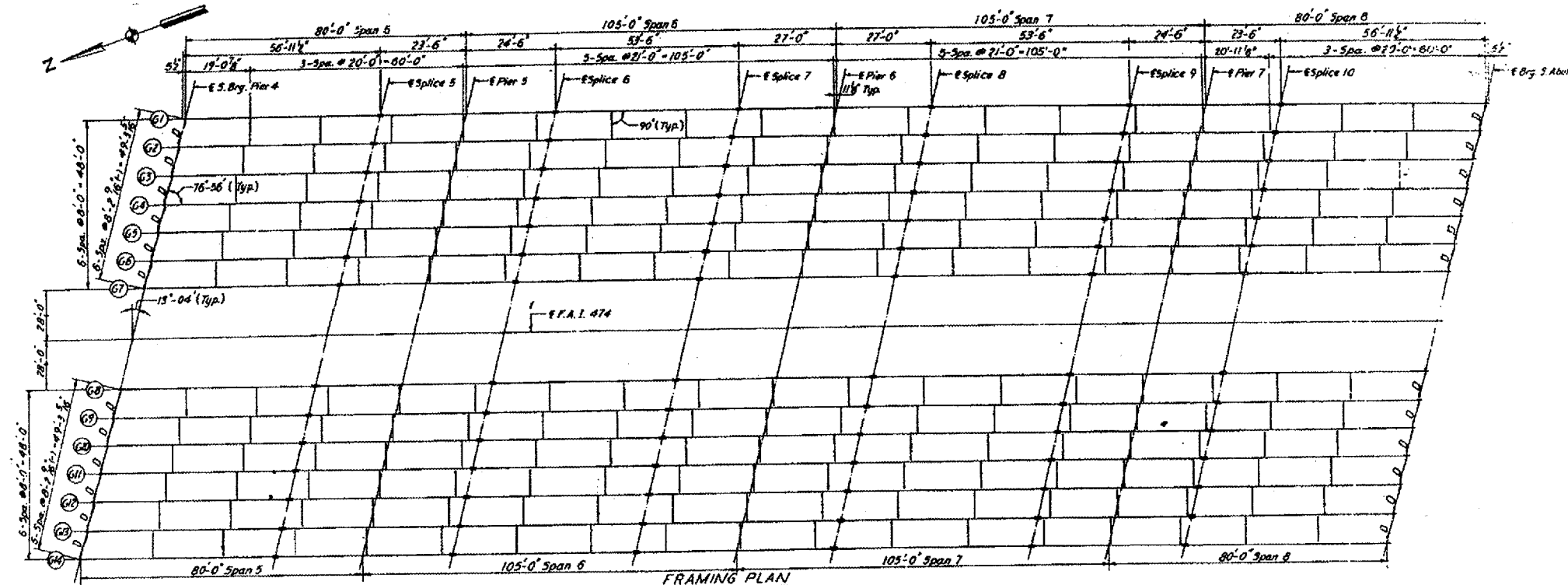
FOR
INFORMATION ONLY

ILLINOIS DEPARTMENT OF TRANSPORTATION
BRIDGE NO 3 & 4
PLAN & ELEVATION

DATE 07-26-2006 DRAWN BY

BRIDGE NO 3 & 4 - Ø72-Ø114/Ø115 I 474 OVER KICKAPOO CREEK & RAILROAD

F.A. RTE.	SECTION	COUNTY	TOTAL SHEETS	SHEET NO.
VAR	D4 BRDG PNT Ø7	VARIOUS	17	11
STA.		TO STA.		
FED. ROAD DIST. NO. 4		ILLINOIS		

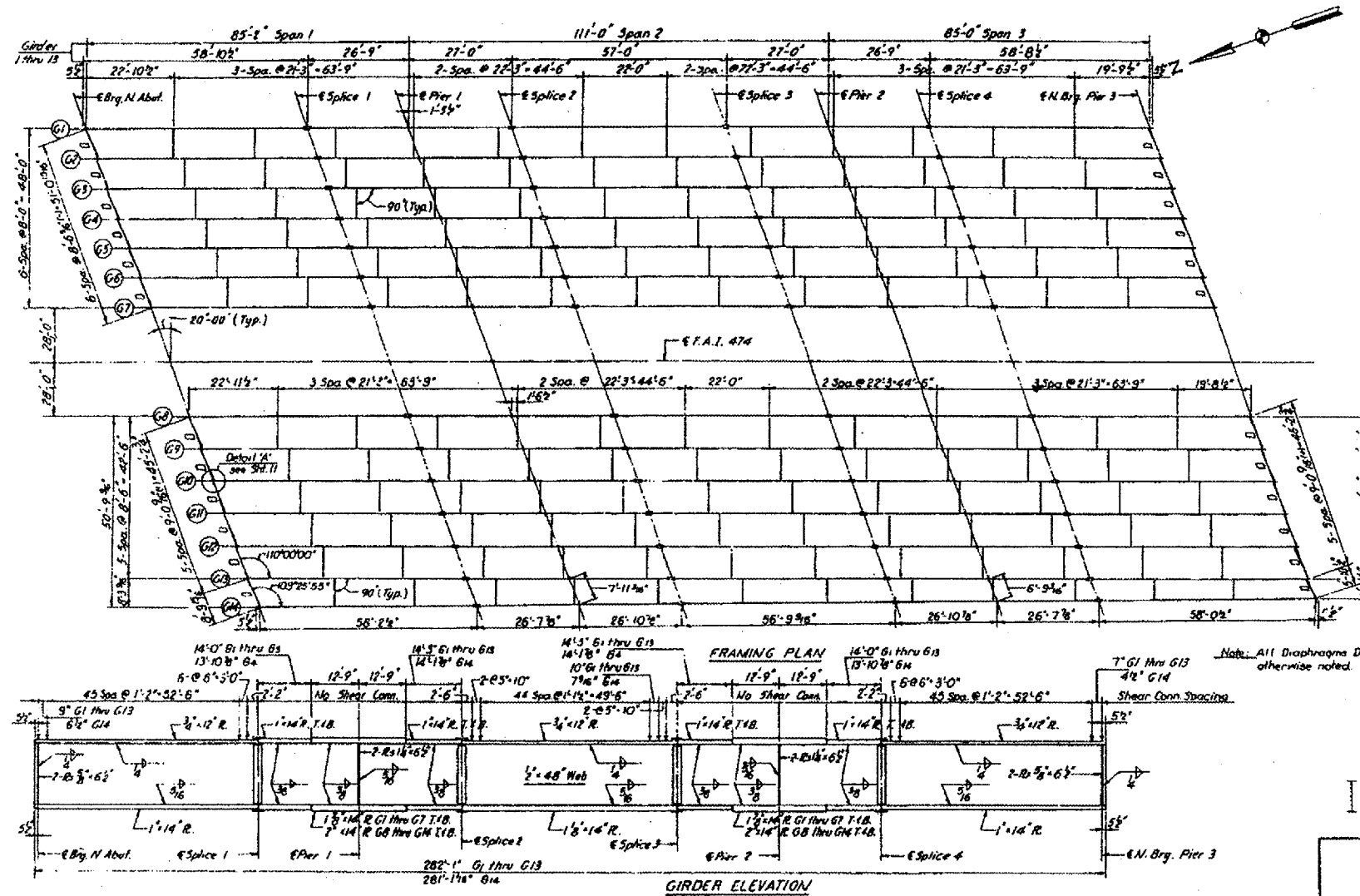


FOR
INFORMATION ONLY

ILLINOIS DEPARTMENT OF TRANSPORTATION
BRIDGE NO 3 & 4
FRAMING PLAN
DATE 07-26-2006
DRAWN BY

BRIDGE NO 3 & 4 - 072-0114/0115 I 474 OVER KICKAPOO CREEK & RAILROAD

F.A. RTE.	SECTION	COUNTY	TOTAL SHEETS	SHEET NO.
VAR	04 BRDG PNT 07	VARIOUS	17	12
STA.		TO STA.		
FED. ROAD DIST. NO. 4		ILLINOIS		



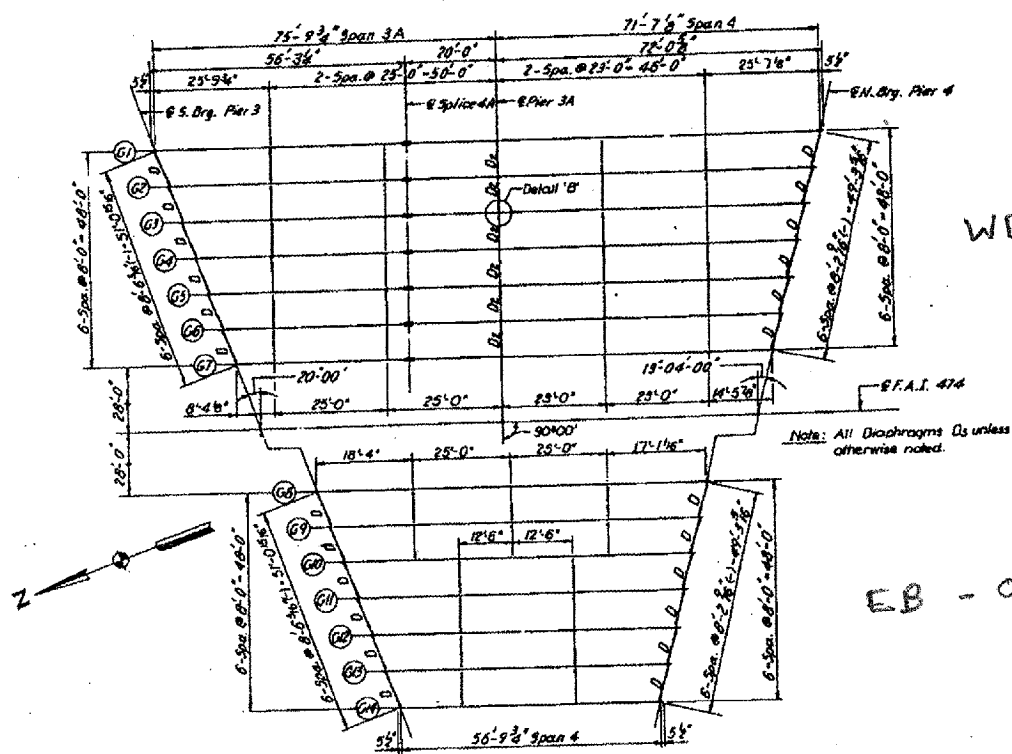
FOR
INFORMATION ONLY

ILLINOIS DEPARTMENT OF TRANSPORTATION
BRIDGE NO 3 & 4
FRAMING PLAN

DATE 07-26-2006 DRAWN BY

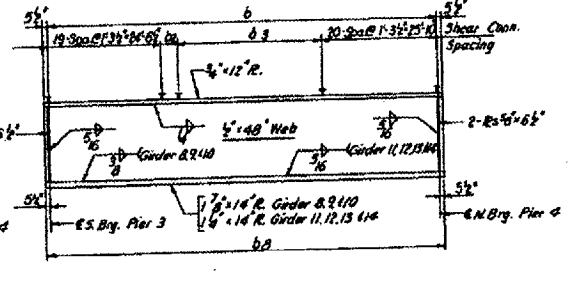
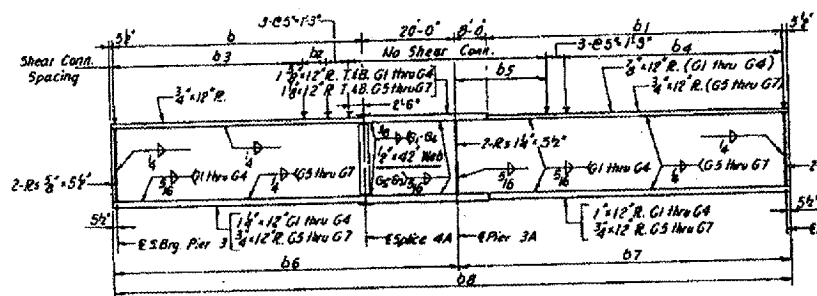
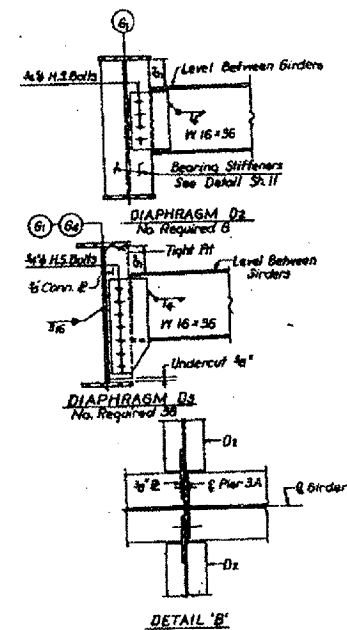
BRIDGE NO 3 & 4 - 072-0114/0115 I 474 OVER KICKAPOO CREEK & RAILROAD

F.A. RTE.	SECTION	COUNTY	TOTAL SHEETS	SHEET NO.
VAR	04 BRDG PNT 07	VARIOUS	17	13
STA.		TO STA.		
FED. ROAD DIST. NO. 4		ILLINOIS		



Note: All Diaphragms Ds unless otherwise noted.

EB-0114

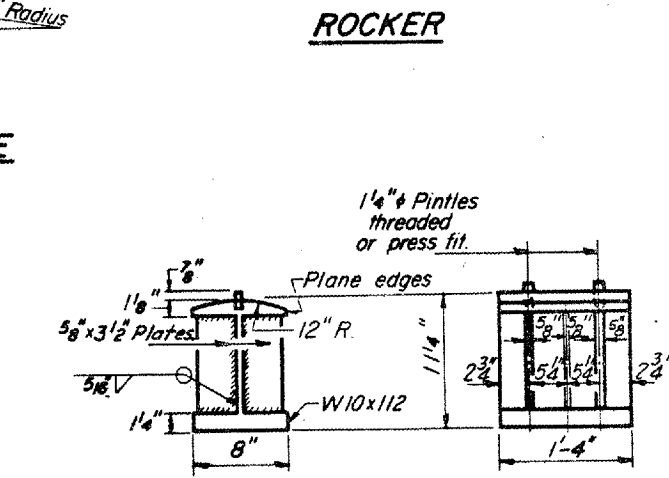
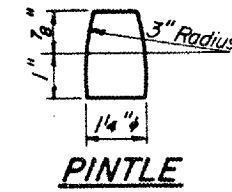
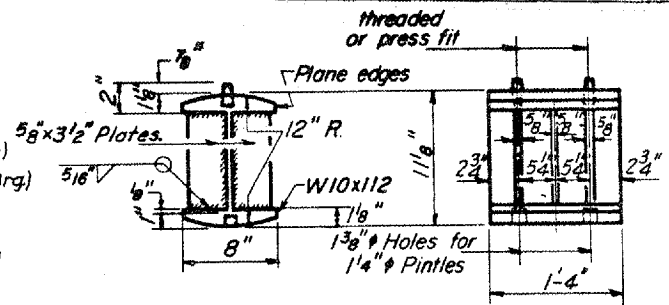
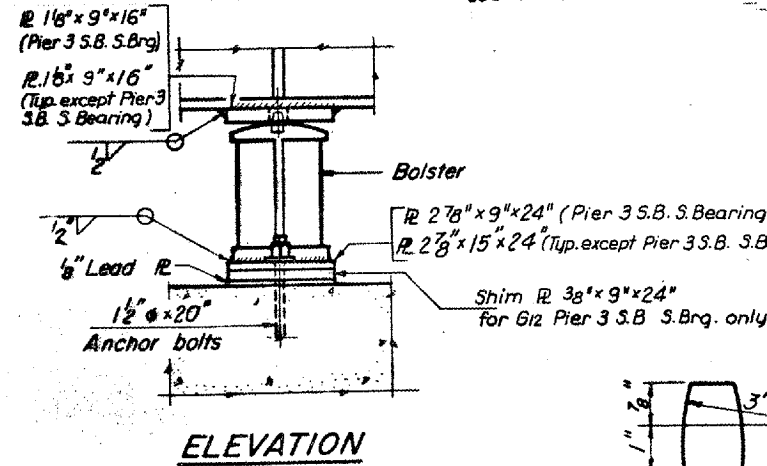
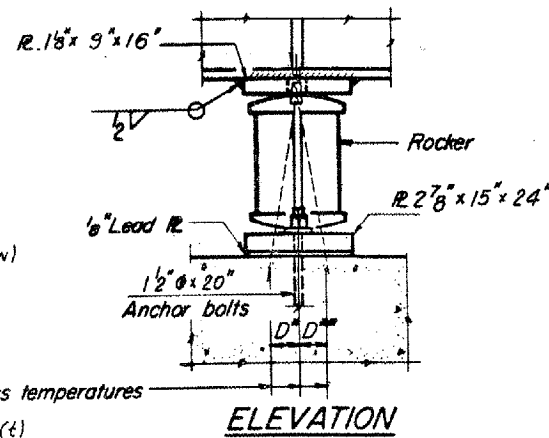
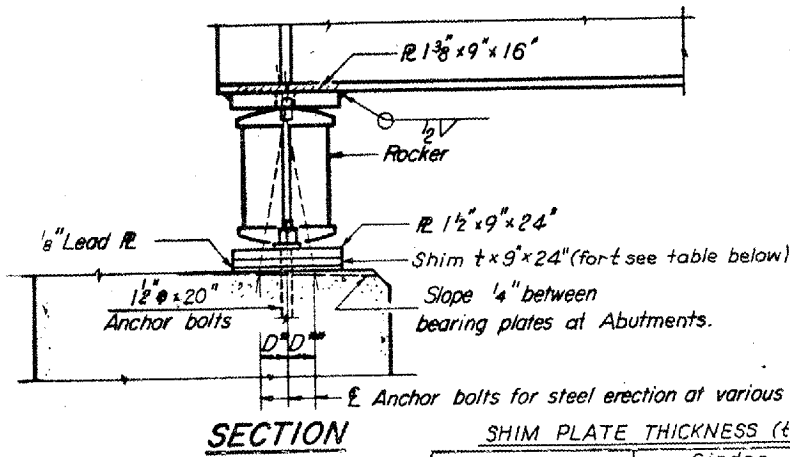


FOR INFORMATION ONLY

ILLINOIS DEPARTMENT OF TRANSPORTATION
BRIDGE NO 3 & 4
FRAMING PLAN
DATE 07-26-2006
DRAWN BY

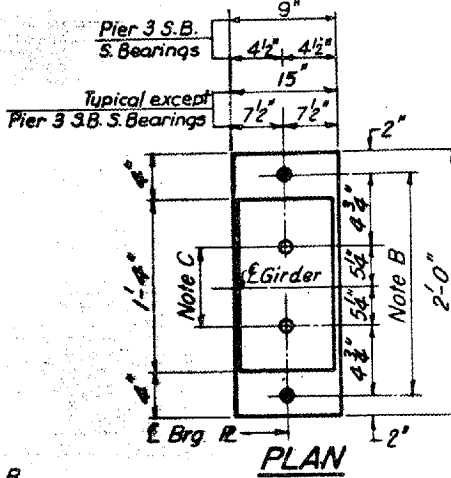
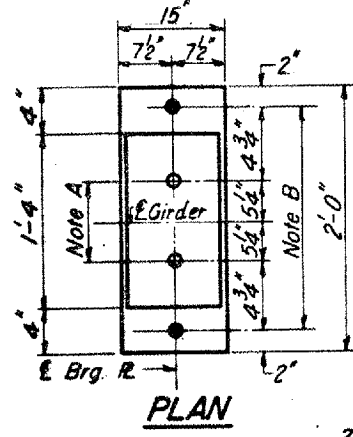
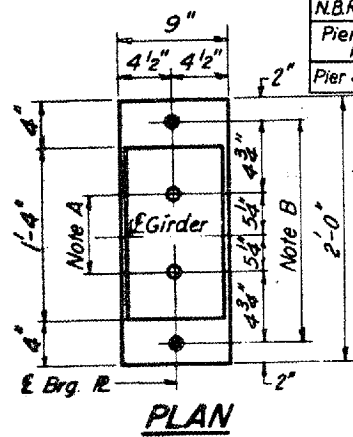
BRIDGE NO 3 & 4 - 072-0114/0115 I 474 OVER KICKAPOO CREEK & RAILROAD

F.A. RTE.	SECTION	COUNTY	TOTAL SHEETS	SHEET NO.
VAR 04 BRDG PNT 07	VARIOUS	ILLINOIS	17	136
STA. TO STA.		FED. ROAD DIST. NO. 4 ILLINOIS		



SHIM PLATE THICKNESS (t)

Location	Girder						
	G2	G3	G4	G5	G6	G7	G11
Pier 4 S.Brg.	1/8	1/8	1/8	-	-	-	-
N.B.Rdwy. N.Brg.	-	-	-	1/4	1/4	1/4	-
Pier 3 S.B.Rdwy. N.Brg.	-	-	-	-	-	-	1/4
Pier 3 S.B.Rdwy. S.Brg.	-	-	-	-	-	-	3/8



AT ABUTMENTS AND PIER 3 N.B., 3 S.B., N.BRG. & 4

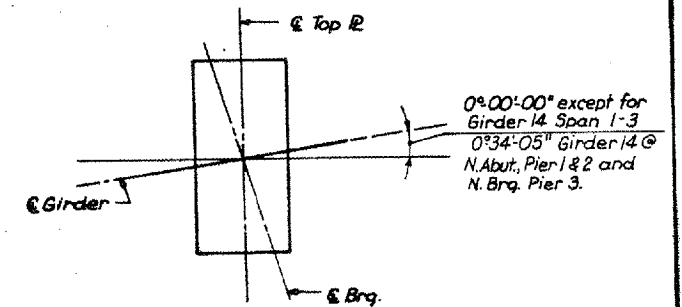
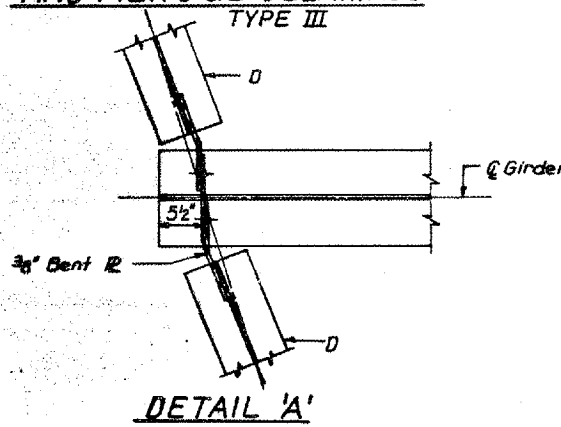
NOTE A
 1 3/8" Holes - 1" deep in top R for pintles. Thread or press fit pintles into bottom R.

AT PIER 1, 5, 8, 7 TYPE II BEARING ASSEMBLY DETAILS

NOTE B
 2" Holes for 1 1/2" anchor bolts. 5/16" x 2 1/2" x 2 1/2" R. Washers under nut.

AT PIER 2, 3A, 6 AND PIER 3 S.B. S.BEARINGS TYPE III

NOTE C
 1 3/8" Holes 1" deep in top R only for 1 1/4" pintles.

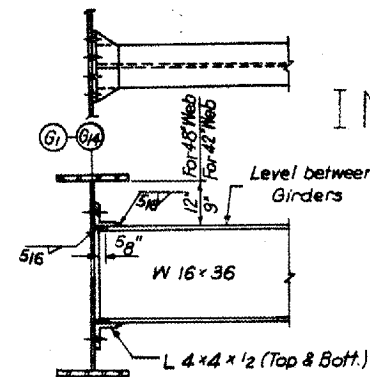
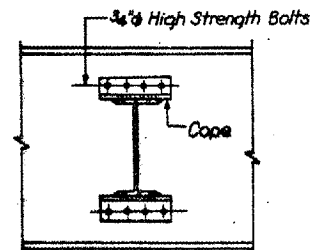
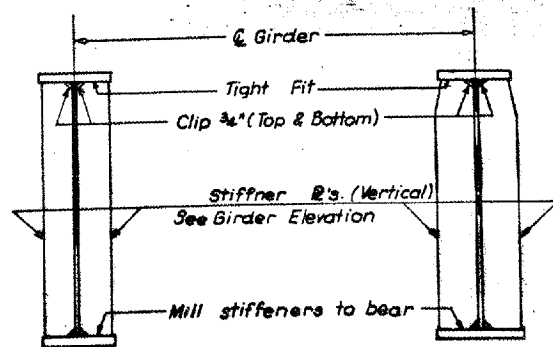
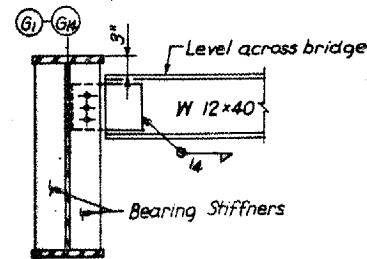


NOTES ON SETTING OF ANCHOR BOLTS AT EXP. BRGS.

- a) D* (Side of brg away from fixed brg.)
 D* = 1/8" per each 100' of expansion for every 15° fall below the normal temp. of 50°F
- D** (Side of brg. toward fixed brg.)
 D** = 1/8" per each 100' of expansion for every 15° rise above the normal temp. of 50°F

NOTE E
 S. Bearing Pier 3 or N. Bearing Pier 4 should have a hold down Strap. See Detail on Sheet 11.

- b) After Girder have been erected and dimensions D* or D** determined, holes shall be drilled and anchor bolts shall be grouted in place. All fixed anchor bolts may be built into the masonry.



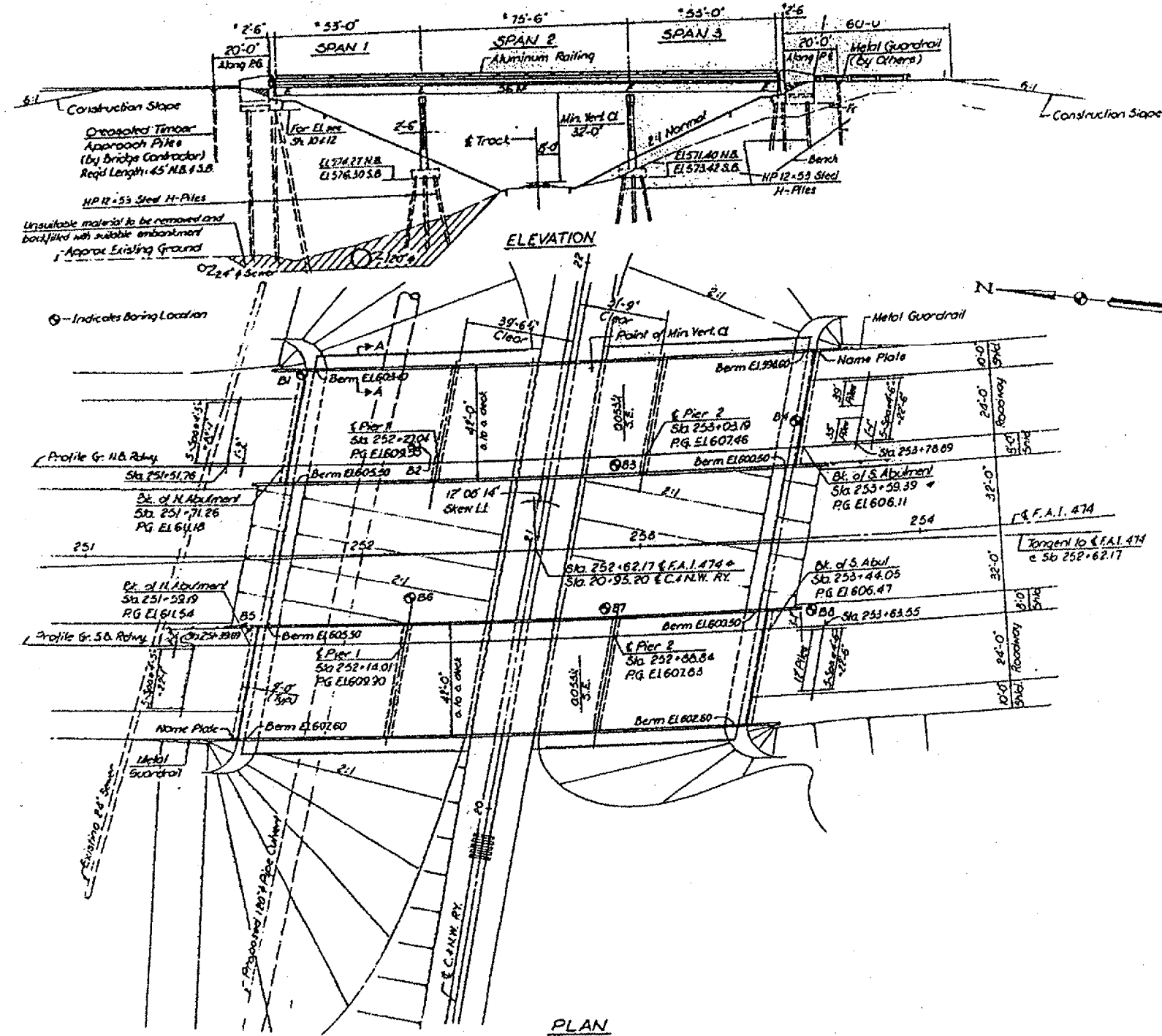
FOR INFORMATION ONLY

STATE OF ILLINOIS
 DEPARTMENT OF TRANSPORTATION
 STRUCTURAL STEEL
 F.A.I. ROUTE 474
 OVER
 KICKAPOO CREEK & B.N. R.R.
 STA. 67 + 00.00

Add SHEET

BRIDGE NO 5 & 6 - 072-0124/125 I 474 OVER RAILROAD

F.A. RTE.	SECTION	COUNTY	TOTAL SHEETS	SHEET NO.
VAR	D4 BRDG PNT 07	VARIOUS	17	14
STA. TO STA.				
FED. ROAD DIST. NO. 4			ILLINOIS	



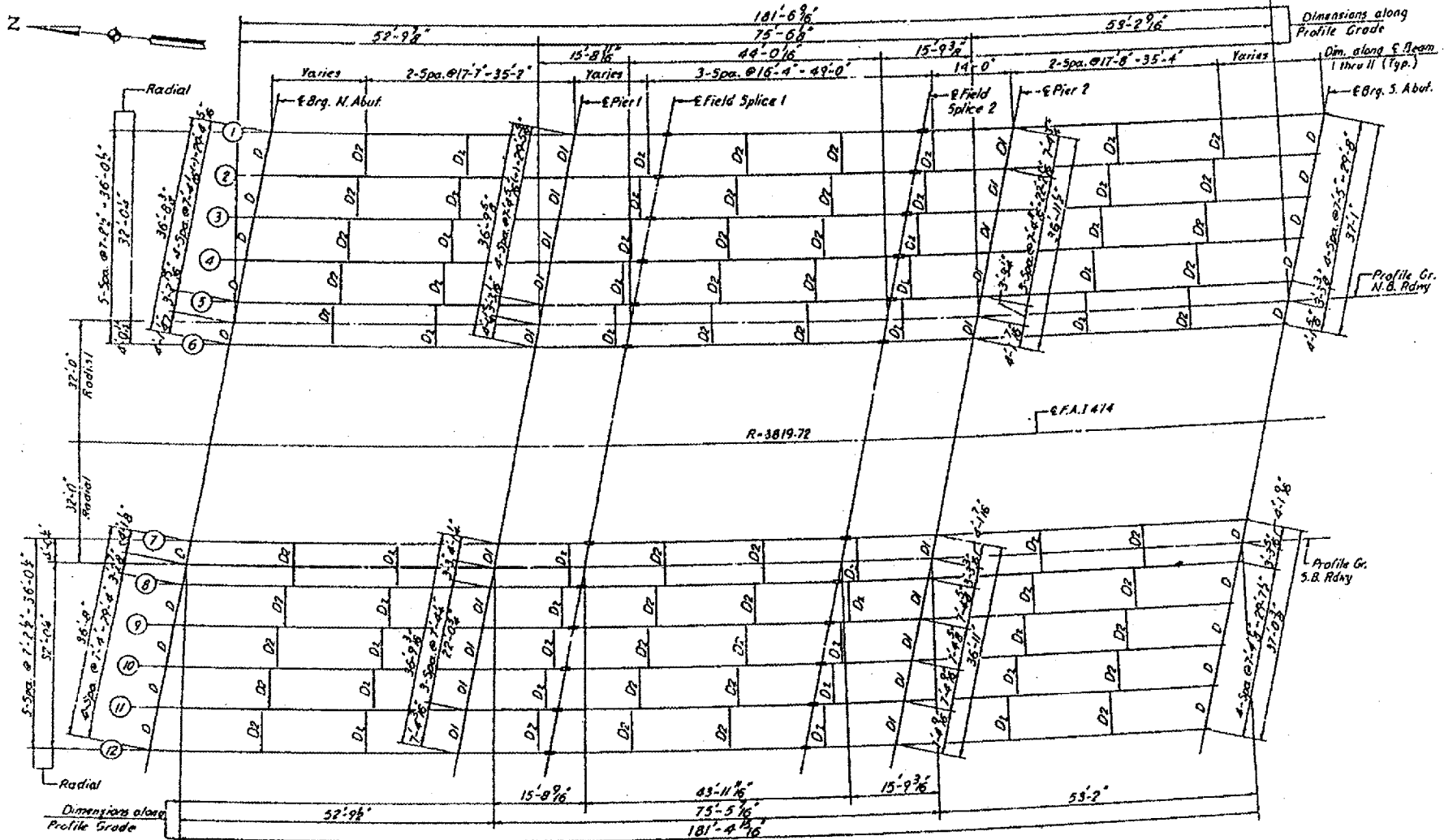
FOR
INFORMATION ONLY

ILLINOIS DEPARTMENT OF TRANSPORTATION
BRIDGE NO 5 & 6
PLAN & ELEVATION

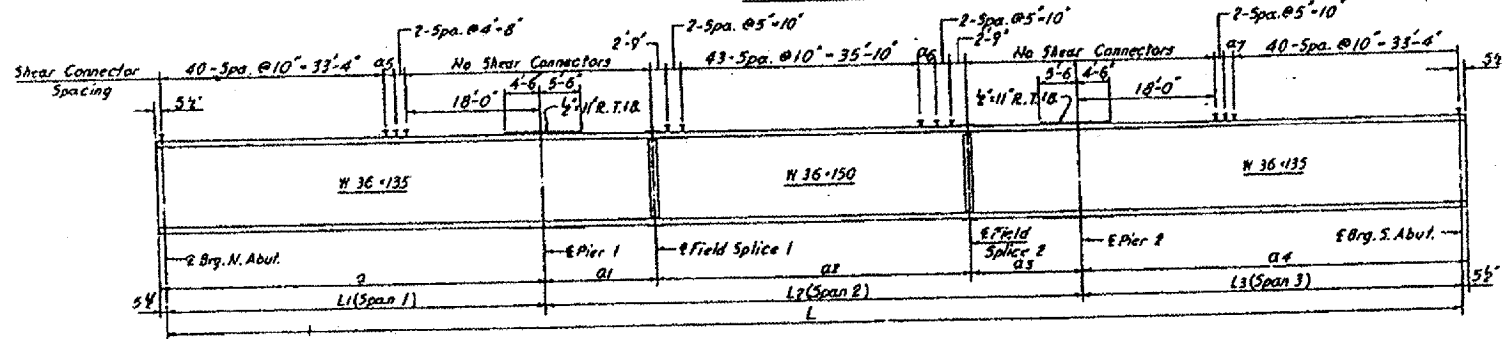
DATE 07-26-2006

DRAWN BY

BRIDGE NO 5 & 6 - 072-0124/125 I 474 OVER RAILROAD



FRAMING PLAN



BEAM ELEVATION

F.A. RTE.	SECTION	COUNTY	TOTAL SHEETS	SHEET NO.
VAR	D4 BRDG PNT 07	VARIOUS	17	15
STA.		TO STA.		
FED. ROAD DIST. NO. 4		ILLINOIS		

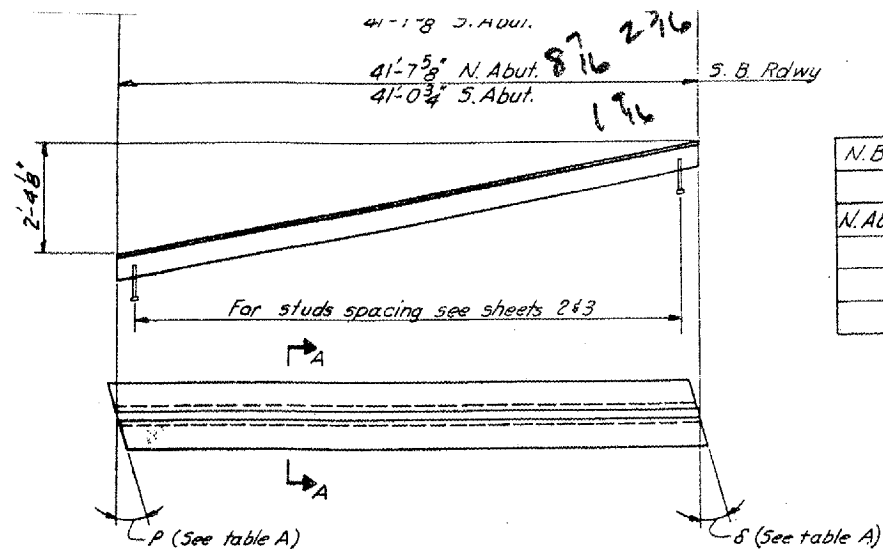
FOR
INFORMATION ONLY

ILLINOIS DEPARTMENT OF TRANSPORTATION
BRIDGE NO 5 & 6
FRAMING PLAN

DATE 07-26-2006 DRAWN BY

BRIDGE NO 5 & 6 - 072-0124/125 I 474 OVER RAILROAD

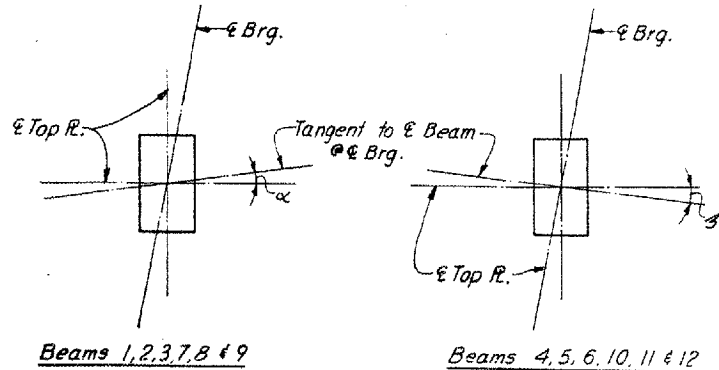
F.A. RTE.	SECTION	COUNTY	TOTAL SHEETS	SHEET NO.
VAR	04 BRDG PNT 07	VARIOUS	17	15a
STA.		TO STA.		
FED. ROAD DIST. NO. 4		ILLINOIS		



EXPANSION GUARD ANGLES
For section A-A see sheet 3

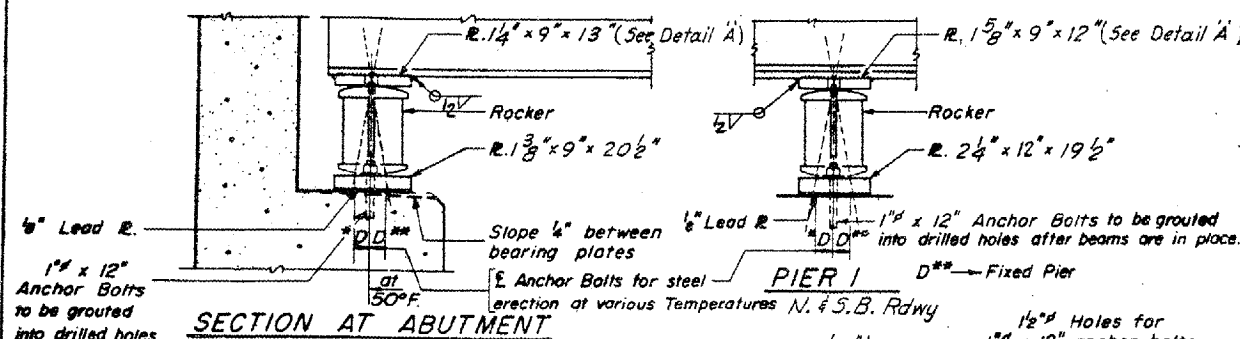
TABLE A

N.B. Rdwy	S.B. Rdwy	Angle P	Angle delta
N. Abut.		10°-48'	10°-47'
	S. Abut.	13°-48'	13°-33'
	N. Abut.	10°-32'	10°-32'
	S. Abut.	13°-27'	13°-23'

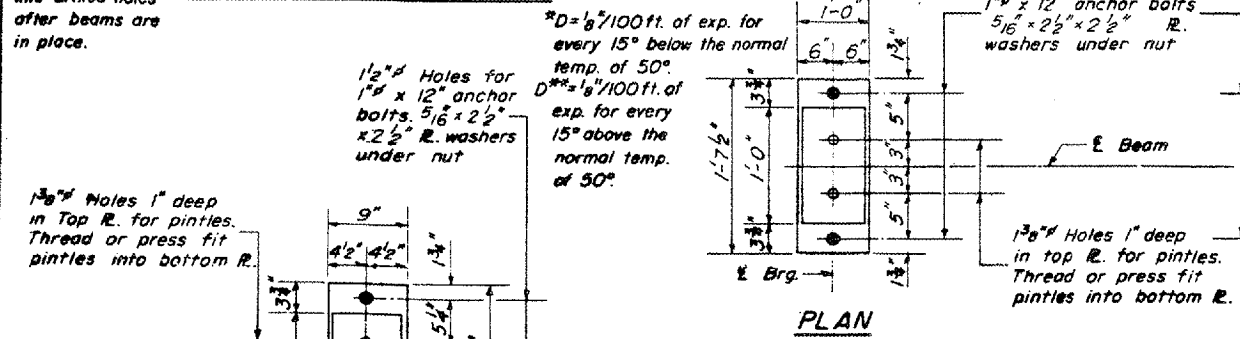


DETAIL OF TOP BEARING PLATE TO BEAM CONNECTION
See table for angles

Beam	E Brg. N. Abut.		E Pier 1		E Pier 2		E Brg. S. Abut.	
	Angle alpha	Angle beta	Angle alpha	Angle beta	Angle alpha	Angle beta	Angle alpha	Angle beta
1	0°-03'-16"		0°-03'-38"		0°-03'-47"		0°-04'-31"	
2	0°-02'-00"		0°-02'-17"		0°-02'-17"		0°-02'-55"	
3	0°-00'-44"		0°-00'-55"		0°-00'-47"		0°-01'-19"	
4		0°-00'-31"		0°-00'-26"		0°-00'-42"		0°-00'-16"
5		0°-01'-46"		0°-01'-47"		0°-02'-11"		0°-01'-51"
6		0°-03'-01"		0°-03'-08"		0°-03'-40"		0°-03'-26"
7	0°-03'-27"		0°-03'-37"		0°-04'-02"		0°-04'-32"	
8	0°-02'-00"		0°-02'-19"		0°-02'-36"		0°-03'-01"	
9	0°-01'-00"		0°-01'-01"		0°-01'-10"		0°-01'-29"	
10		0°-00'-27"		0°-00'-16"		0°-00'-15"		0°-00'-02"
11		0°-01'-22"		0°-01'-33"		0°-01'-40"		0°-01'-42"
12		0°-02'-33"		0°-02'-50"		0°-03'-04"		0°-03'-02"

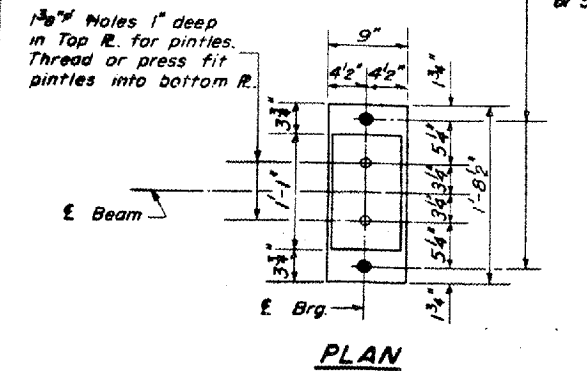


SECTION AT ABUTMENT

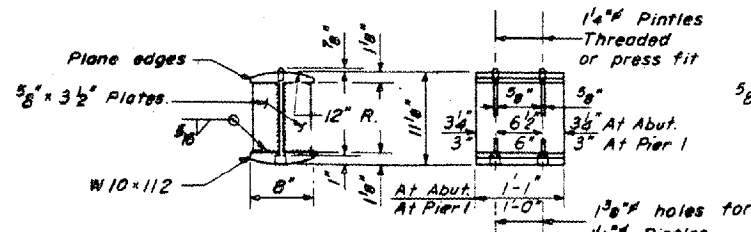


PLAN

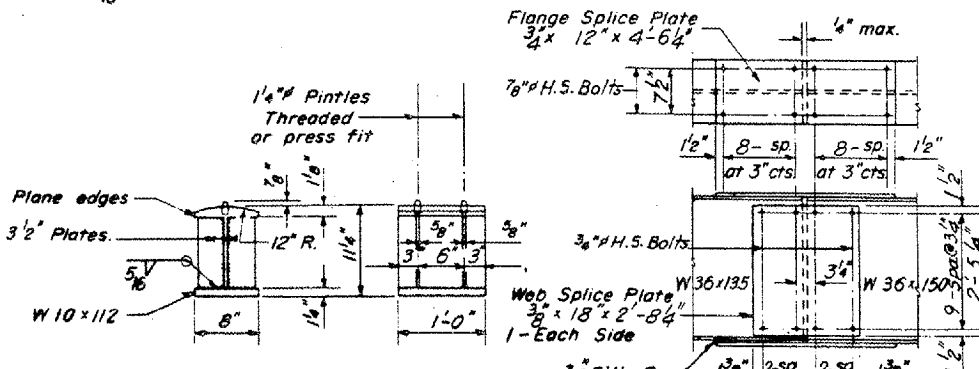
PLAN



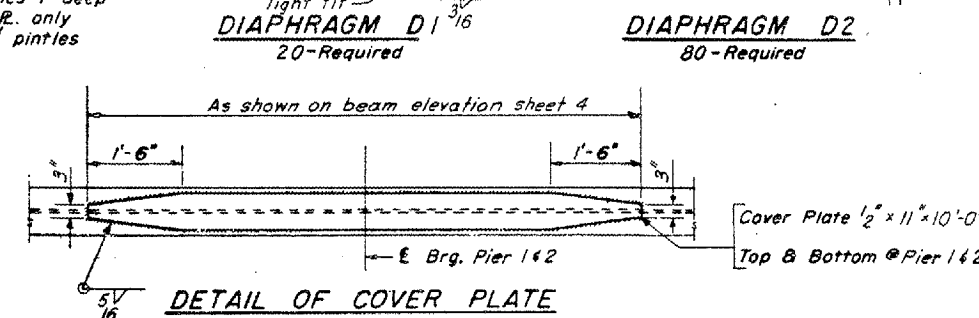
DETAIL OF PINDLE



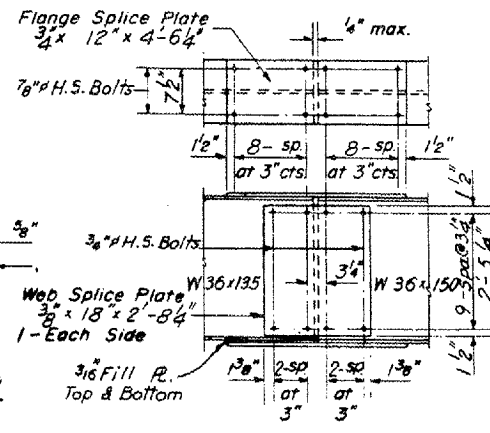
DETAIL OF ROCKER AT ABUTMENTS & PIERS 1



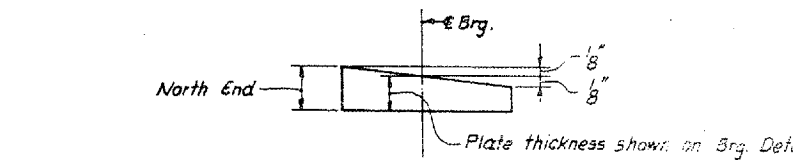
DETAIL OF BOLSTER AT PIERS 2



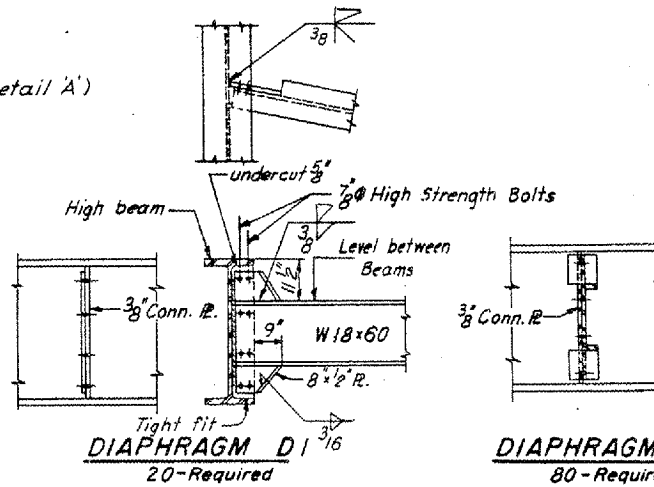
DETAIL OF COVER PLATE



DETAIL OF SPLICE 1 & 2

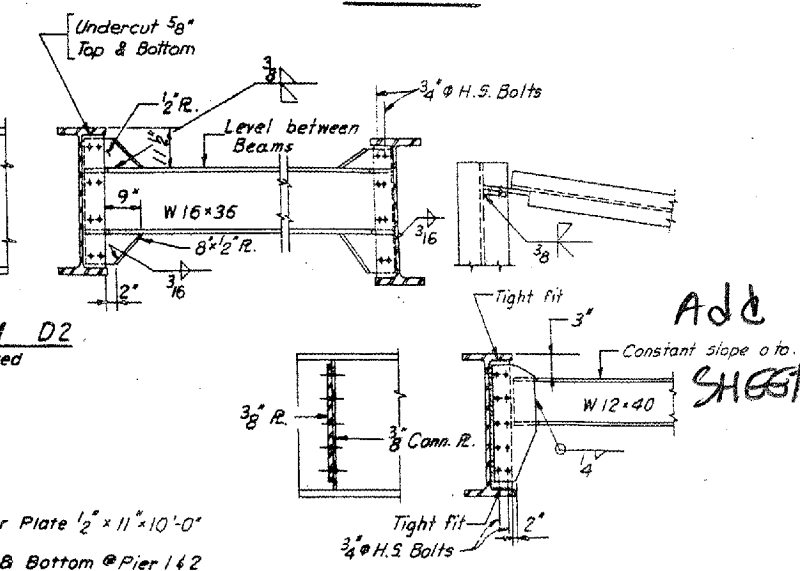


DETAIL 'A'



DIAPHRAGM D1
20-Required

DIAPHRAGM D2
80-Required



DIAPHRAGM D
20-Required

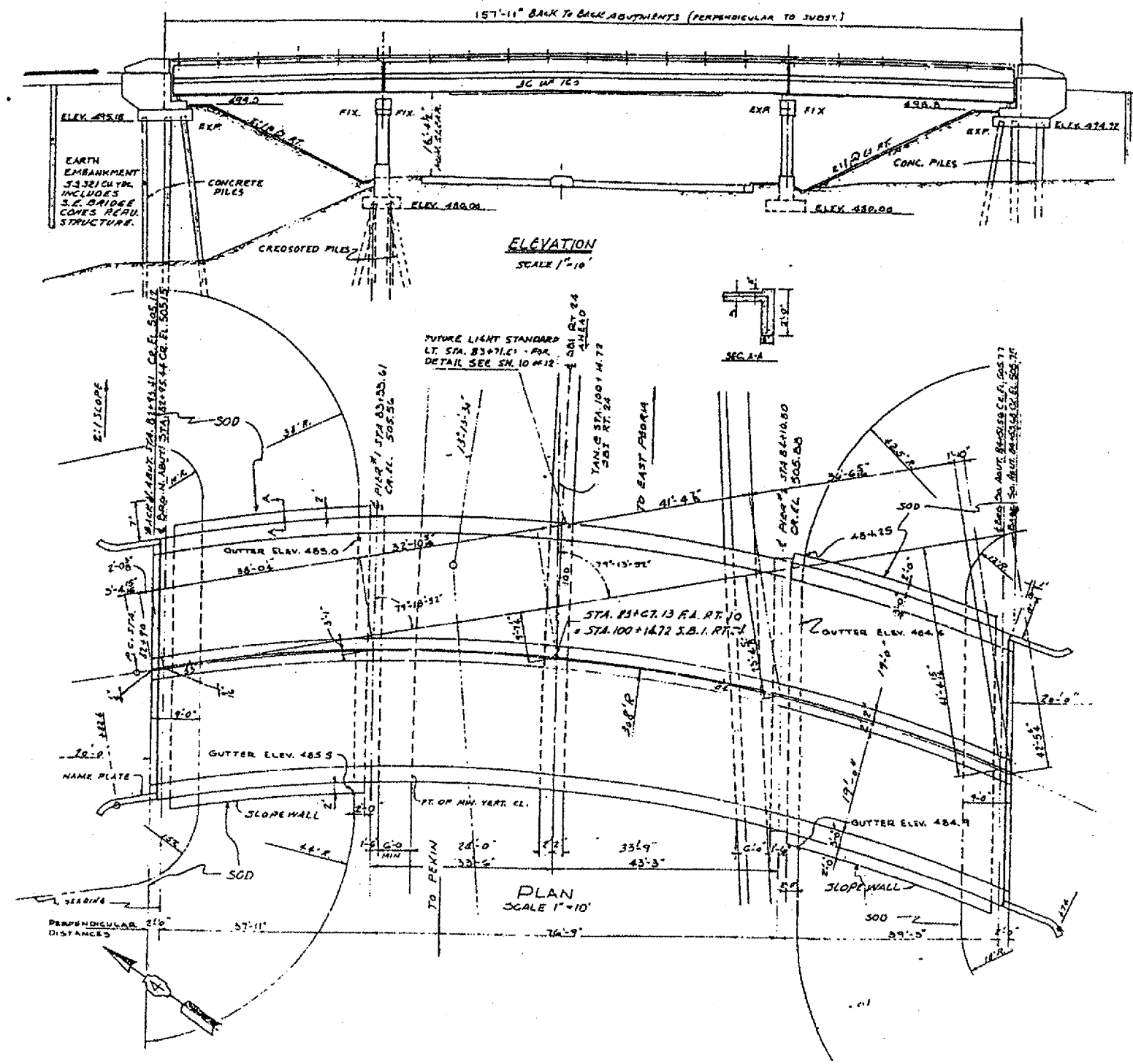
FOR INFORMATION ONLY

STATE OF ILLINOIS
DIVISION OF HIGHWAYS
STRUCTURAL STEEL
F.A.I. ROUTE 474
OVER
C. & N.W. RY.
STA. 252 + 62.17
F.A.I. RT 474 PEORIA COUNTY SECTION 72-3VB
CHRISTIAN-ROGE AND ASSOC
ENGINEERS
CHICAGO ILLINOIS

DESIGNED BY J.J.
DRAWN BY J.J.
CHECKED BY A.T.

BRIDGE NO 7- 090-0035 IL 8/116/29 OVER IL 29

F.A. RTE.	SECTION	COUNTY	TOTAL SHEETS	SHEET NO.
VAR	D4 BROG PNT 07	VARIOUS	17	16
STA.		TO STA.		
FED. ROAD DIST. NO. 4		ILLINOIS		

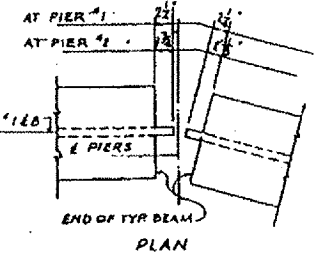
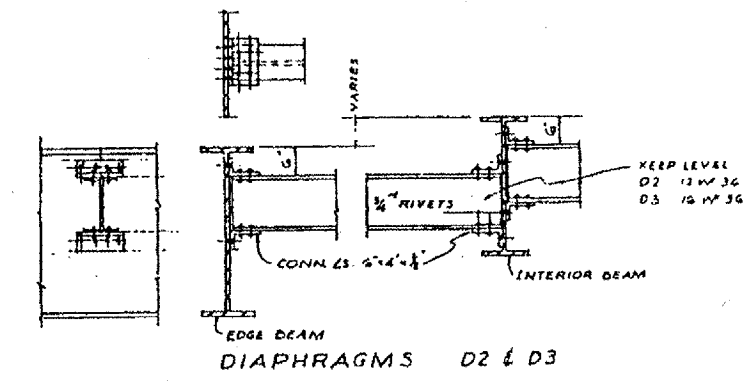
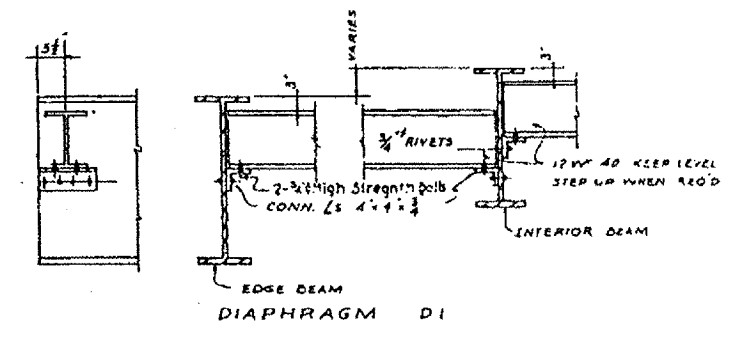
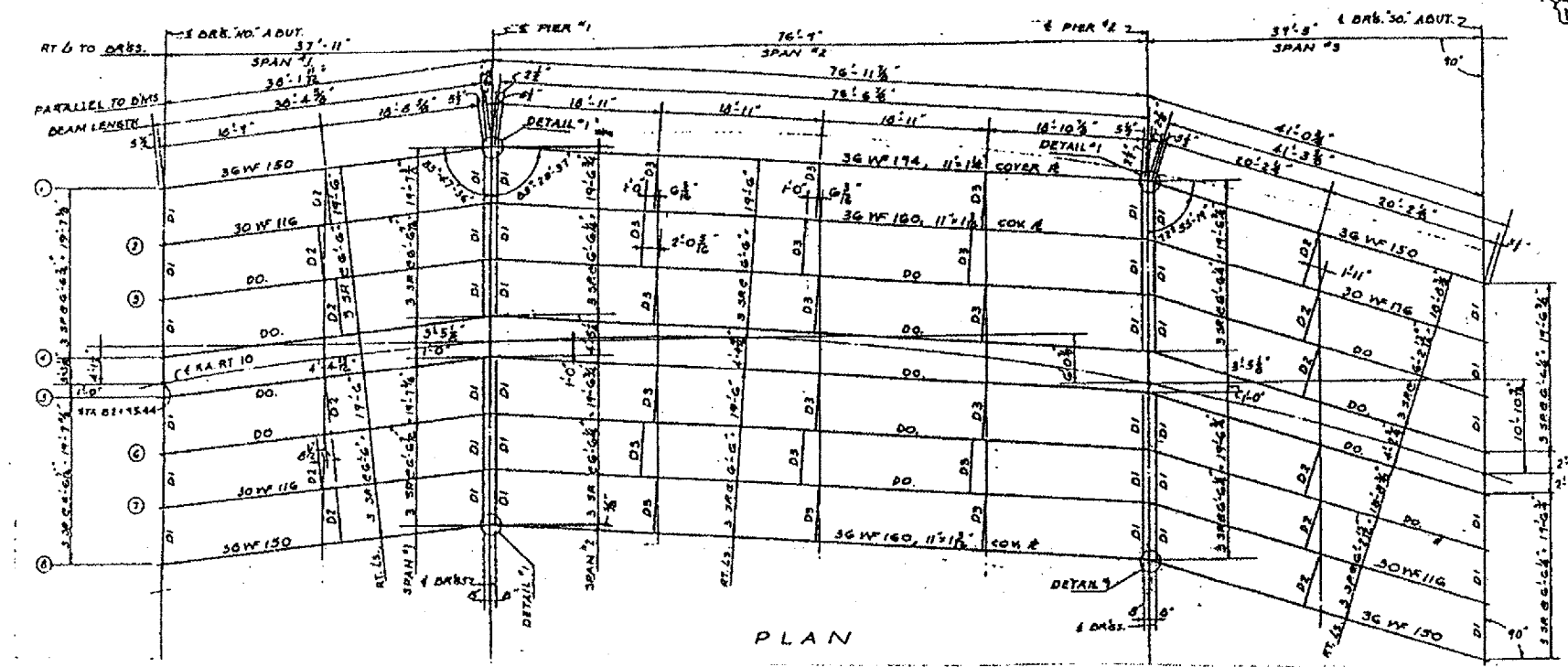


FOR
INFORMATION ONLY

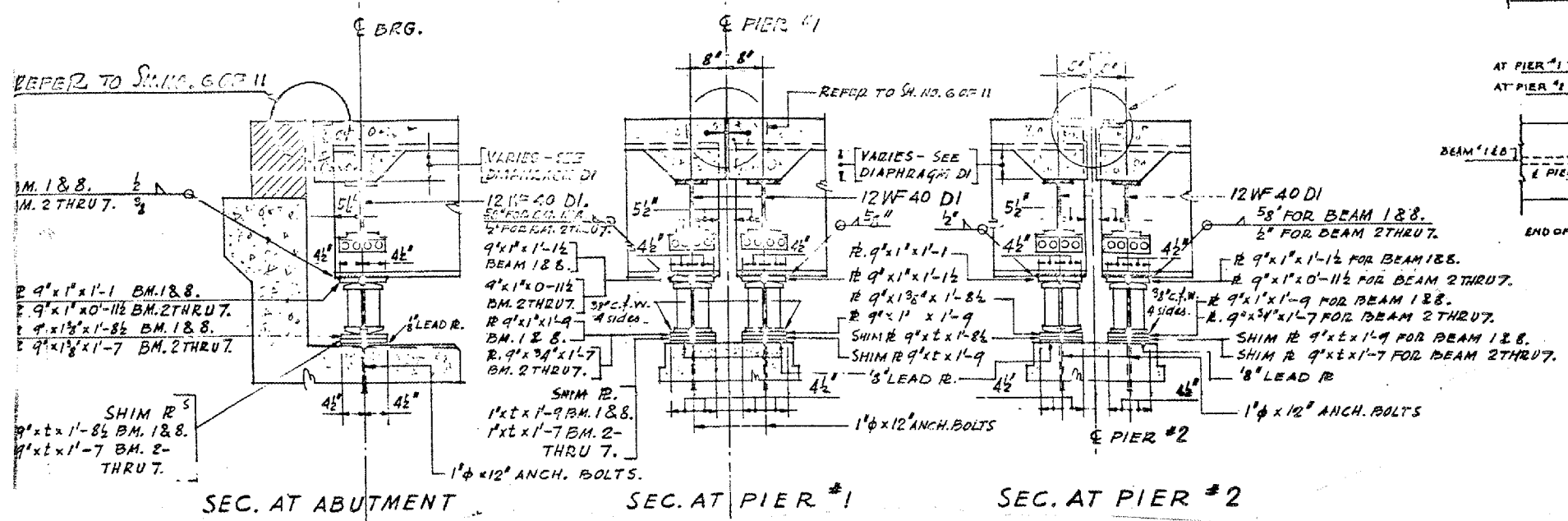
ILLINOIS DEPARTMENT OF TRANSPORTATION
BRIDGE NO 7
PLAN & ELEVATION
DATE 07-26-2006 DRAWN BY

BRIDGE NO 7 - 090-0035 IL 8/116/29 OVER IL 29

F.A. RTE.	SECTION	COUNTY	TOTAL SHEETS	SHEET NO.
VAR	D4 BRDG PNT 07	VARIOUS	17	17
STA.		TO STA.		
FED. ROAD DIST. NO. 4		ILLINOIS		



FOR INFORMATION ONLY



ILLINOIS DEPARTMENT OF TRANSPORTATION
 BRIDGE NO 7
 FRAMING PLAN
 DATE 07-26-2006
 DRAWN BY