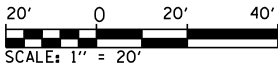
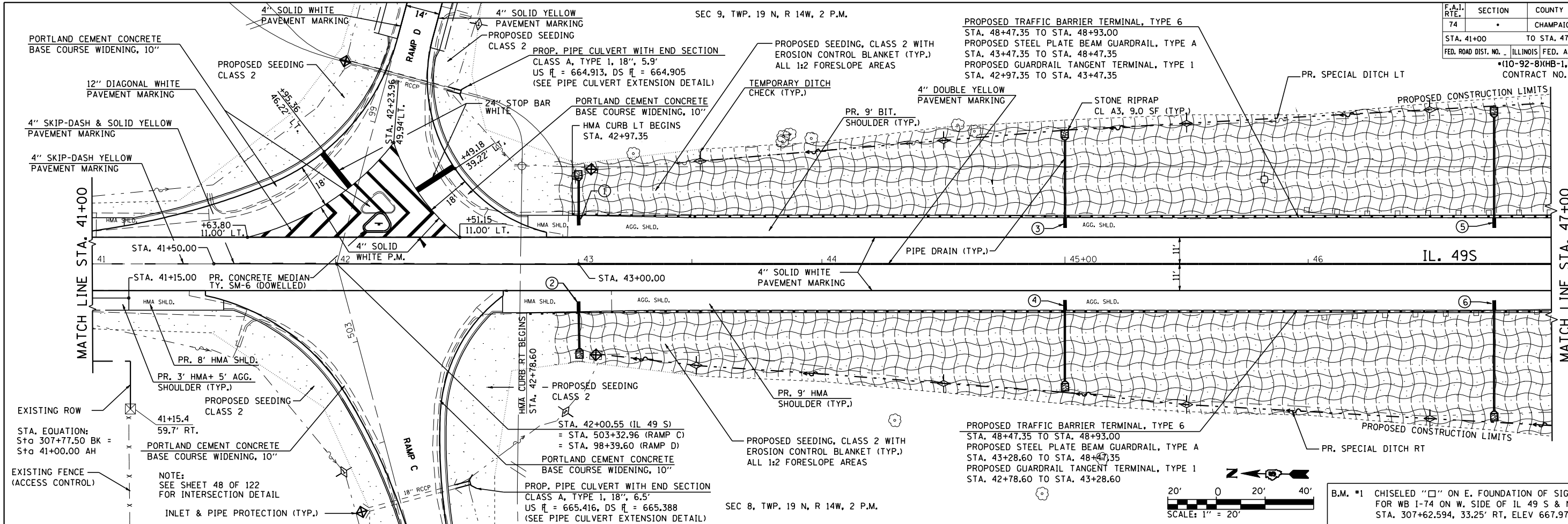


F.A.I. RTE.	SECTION	COUNTY	TOTAL SHEETS	SHEET NO.
74		CHAMPAIGN	122	34
STA. 41+00		TO STA. 47+00		
ILLINOIS FED. AID PROJECT				
*110-92-8XHB-1, HB-41BR				
CONTRACT NO. 70001				

SEC 9, TWP. 19 N, R 14W, 2 P.M.

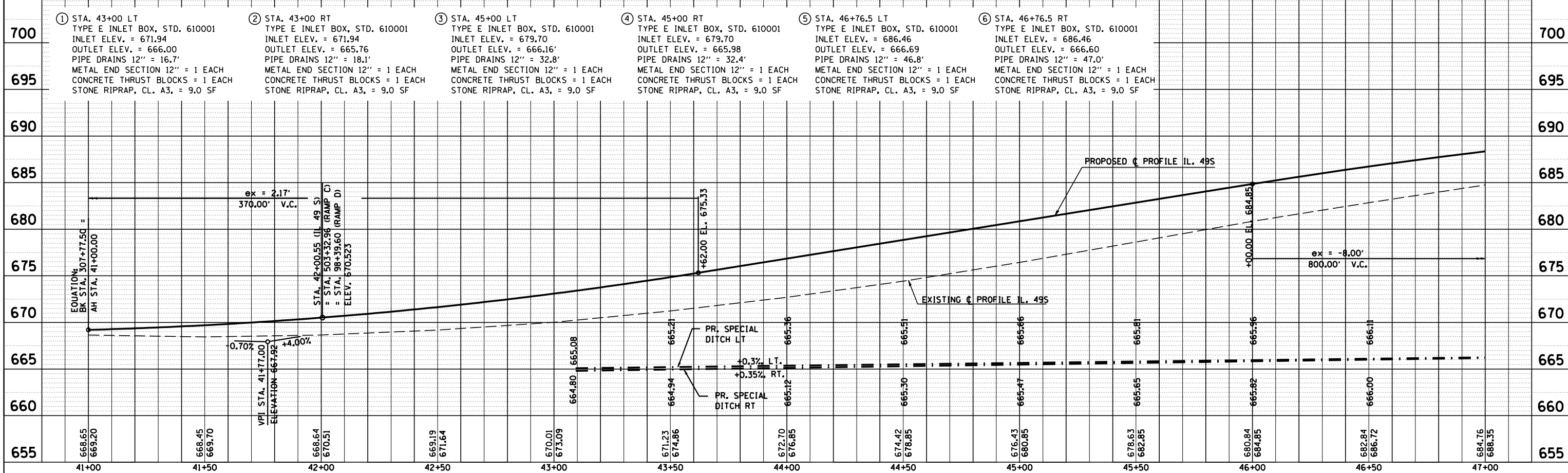
SEC 8, TWP. 19 N, R 14W, 2 P.M.



B.M. #1 CHISELED "□" ON E. FOUNDATION OF SIGN FOR WB I-74 ON W. SIDE OF IL 49 S & N. OF NW RAMP STA. 307+62.594, 33.25' RT, ELEV 667.975

DATE	BY

DATE	BY



IL 49S STA. 41+00 TO STA. 47+00