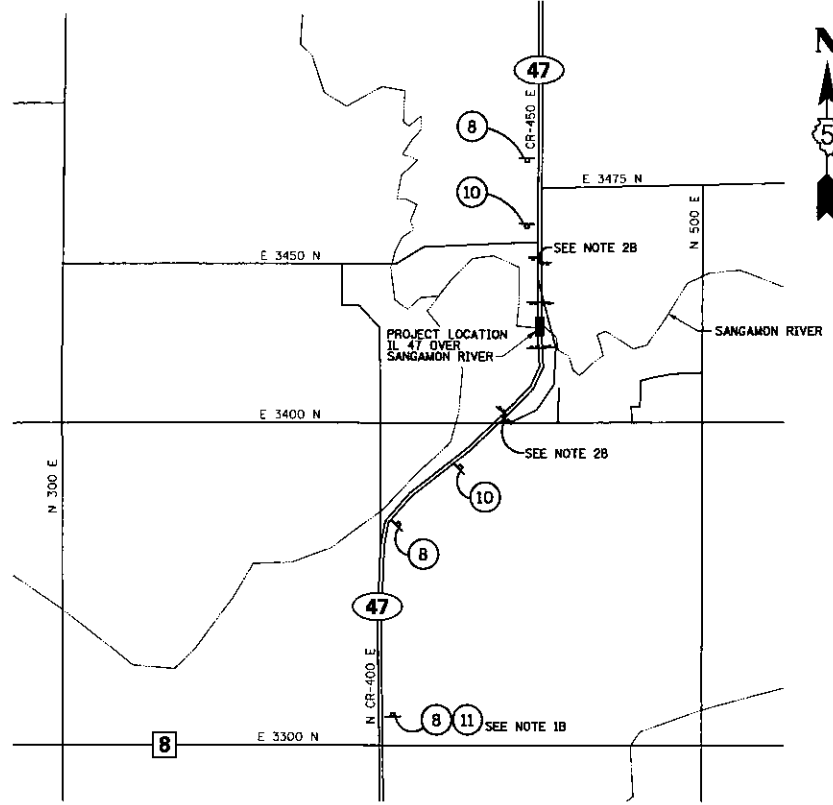


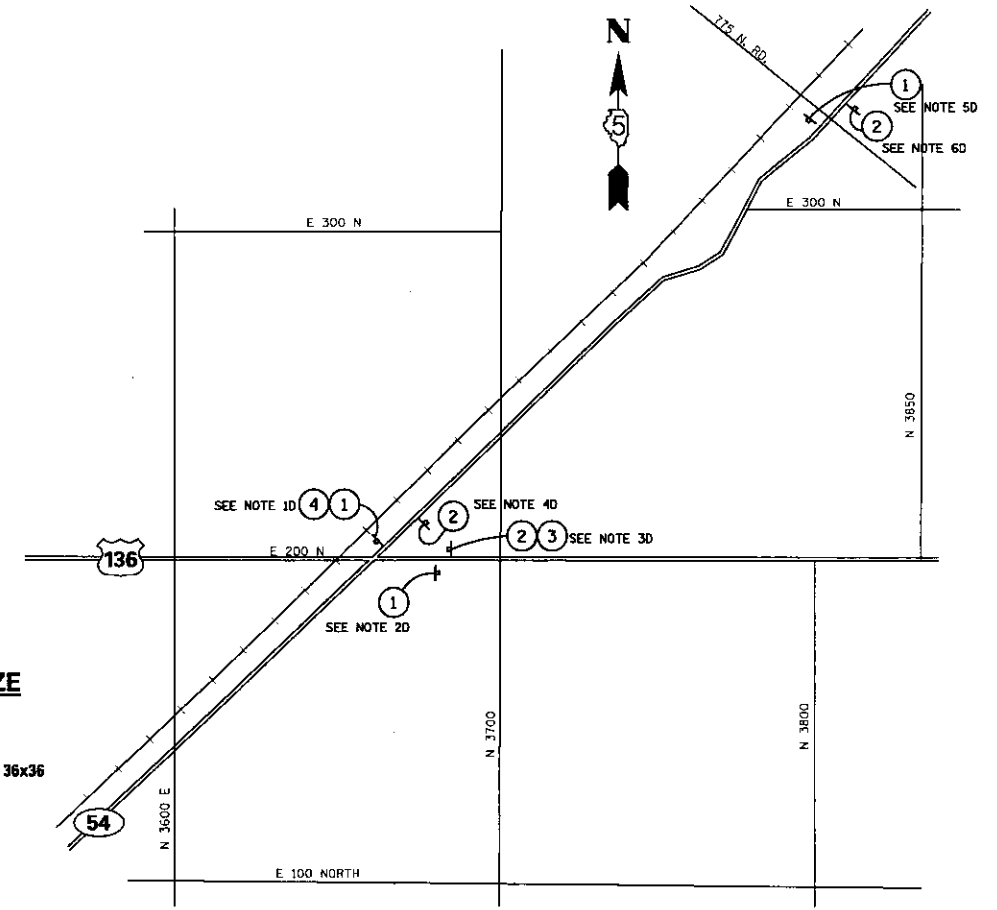
**AREA A**

- NOTES:**
- 1A. ERECT BESIDE JCT. IL. 54 SIGN.
  - 2A. ERECT ACROSS FROM ADOPT A HIGHWAY SIGN.
  - 3A. ERECT BESIDE MAHOMET, PAXTON FARMER CITY SIGN.
  - 4A. ERECT AT MIDDLE OF RADIUS 50 FT NORTH OF INTERSECTION.
  - 5A. ERECT BESIDE WEST IL. 54 SIGN.
  - 6A. ERECT 100 FT WEST OF IL. 47.
  - 7A. ERECT BESIDE ADOPT A HIGHWAY SIGN.
  - 8A. ERECT BESIDE FARMER CITY BLOOMINGTON MAHOMET SIGN.
  - 9A. ERECT IN FRONT OF THE SAND TRAP BAR.
  - 10A. ERECT BESIDE JCT. IL. 47 SIGN.
  - 11A. ERECT BESIDE SPEED LIMIT 40 SIGN.
- COVER ALL CONFLICTING SIGNS.



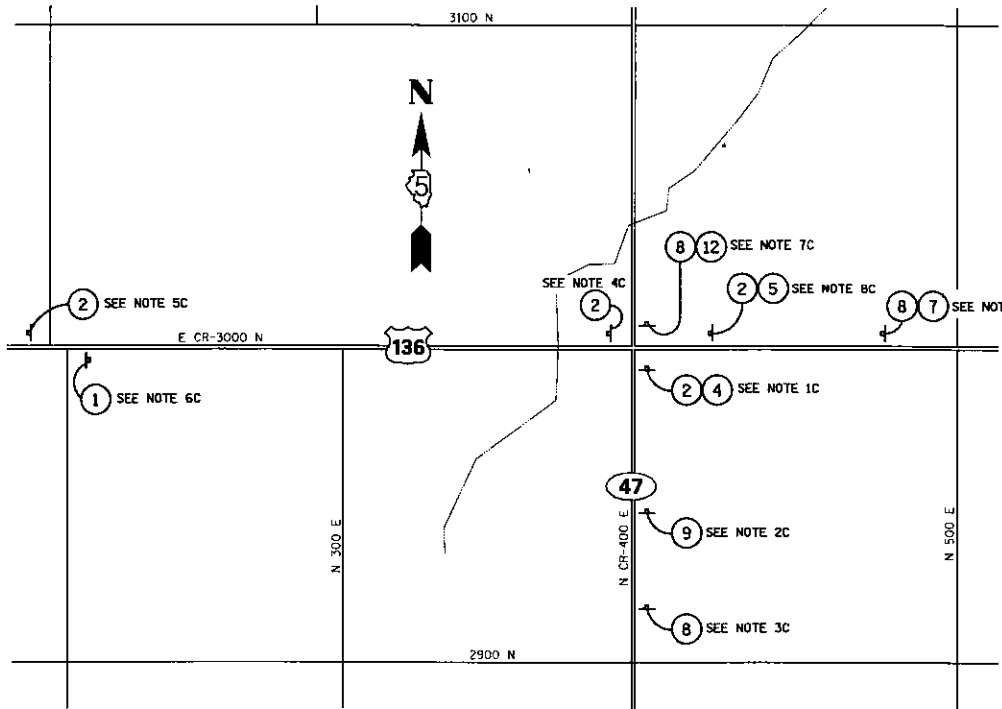
**AREA B**

- NOTES:**
- 1B. ERECT BESIDE NORTH IL. 47 SIGN @ 3300 N RD. / FOOSLAND RD.
  - 2B. SET STAGGERED TYPE 3 BARRICADE AT RDS. 3400 N & 3450 N
  - 3B. FOR BARRICADE PLACEMENT ONLY - FOLLOW TYPICAL APPLICATION OF ROAD CLOSURES FOR ALL REQUIREMENTS FOR CLOSING IL. 47.
- ONE ADDITIONAL SIGN SHOWN SOUTH OF CLOSURE.
  - COVER ALL CONFLICTING SIGNS



**AREA D**

- NOTES:**
- 1D. ERECT IN FRONT OF WOOD POWER LIGHT POLE AT INTERSECTION.
  - 2D. ERECT BESIDE EAST US. 136 SIGN.
  - 3D. ERECT 50 FT FROM ILL. 54 INTERSECTION.
  - 4D. ERECT ACROSS FROM RANTOUL McLEAN SIGN.
  - 5D. ERECT BESIDE McLEAN COUNTY SIGN AT RD. 775 N.
  - 6D. ERECT BESIDE CHAMPAIGN COUNTY SIGN AT RD. 775 N.
- COVER ALL CONFLICTING SIGNS



**AREA C**

- NOTES:**
- 1C. ERECT BESIDE ILL. 47 US. 136 SIGN.
  - 2C. ERECT BESIDE BLOOM HAVANA FISHER SIGN.
  - 3C. ERECT BESIDE JCT. US. 136 SIGN.
  - 4C. ERECT BESIDE WEST US. 136 SIGN.
  - 5C. ERECT BESIDE WEST US. 136 SIGN AT RD. 100 E.
  - 6C. ERECT BESIDE CHAMPAIGN COUNTY SIGN AT RD. 4200 E.
  - 7C. ERECT BESIDE NORTH ILL. 47 SIGN.
  - 8C. ERECT BESIDE US. 136 ILL. 47 SIGNS.
  - 9C. ERECT ACROSS FROM LEFT TURN LANE SIGN.
- COVER ALL CONFLICTING SIGNS.

**LEGEND:**

SIGN #	SIGN TYPE	SIZE	SIGN #	SIGN TYPE	SIZE
1	DETOUR SOUTH	M4-8 24x12	8	ROAD CLOSED AHEAD	W20-3 36x36
2	ILL 47	M3-3 24x12	9	DETOUR AHEAD	W20-20 36x36
3	DETOUR NORTH	M4-8 24x12	10	BARRICADE AHEAD	G20 30x24
4	ILL 47	M3-3 24x12	11	1 MILE	W16-3A 30x12
5	RIGHT TURN	M1-5 24x30	12	4 MILE	W16-3A 30x12
6	LEFT TURN	M4-8 24x12	13	5 MILE	W16-3A 30x12
7	RIGHT TURN	M3-3 24x12	14	ILL. 47 CLOSED 4 MILES SOUTH OF GIBSON CITY	R113A 60x30

REVISIONS	
NAME	DATE

ILLINOIS DEPARTMENT OF TRANSPORTATION

IL 47  
DETOUR PLAN  
AREAS A, B, C, & D  
DETAILS

SCALE: VERT. = NTS.  
HORIZ. = NTS.  
DATE: 7/06

DRAWN BY  
CHECKED BY TMW