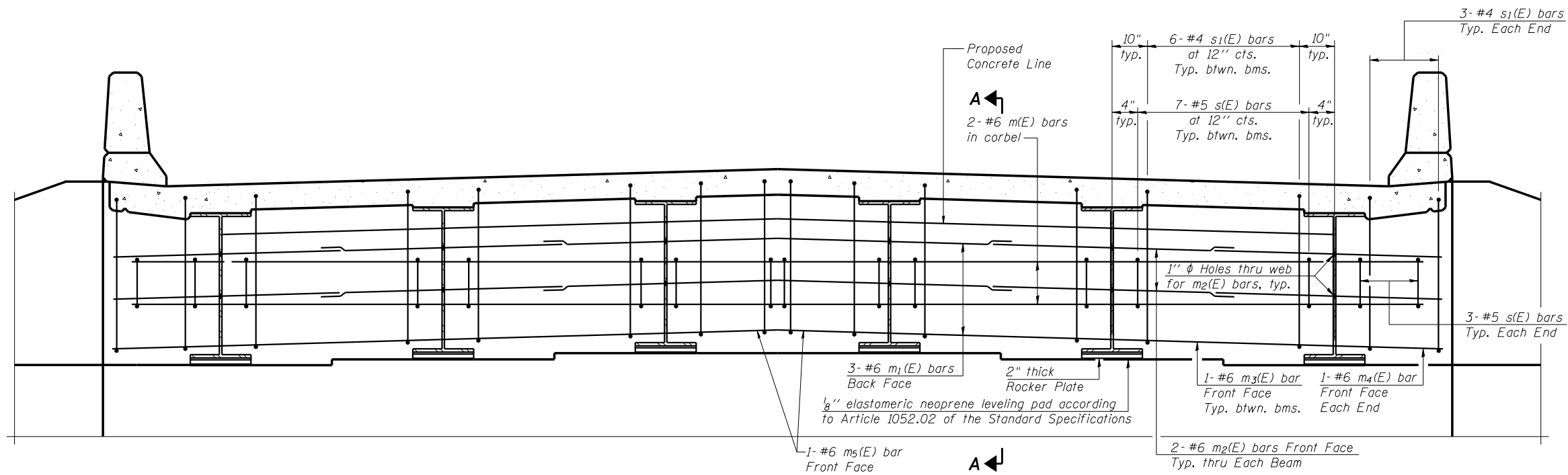
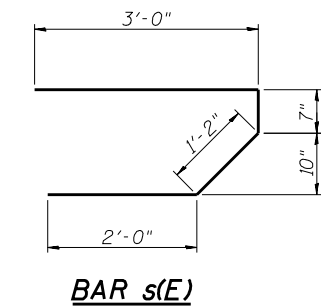


ROUTE NO.	SECTION	COUNTY	TOTAL SHEETS	SHEET NO.	SHEET NO. 7 17 SHEETS
F.A.P. 326	129BR-3	CHAMPAIGN			
FED. ROAD DIST. NO. 7	ILLINOIS	FED. AID PROJECT			
CONTRACT #70344					

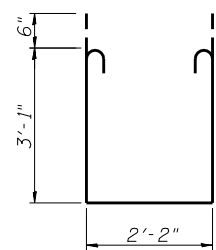


Notes:  
 Reinforcement bars in diaphragm are billed with superstructure on Dwg. S-6.  
 Concrete in diaphragm is included with Concrete Superstructure on Dwg. S-6.  
 For details of bars s(E) & s1(E) see this dwg.  
 The s(E) and s1(E) bars shall be placed parallel to the beams. Spacing for these bars shall be at right angles to the beams.  
 For anchor bolt details see Dwg. S-14.

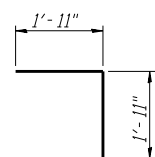
**DIAPHRAGM ELEVATION AT NORTH ABUTMENT**  
 (South Abutment similar)



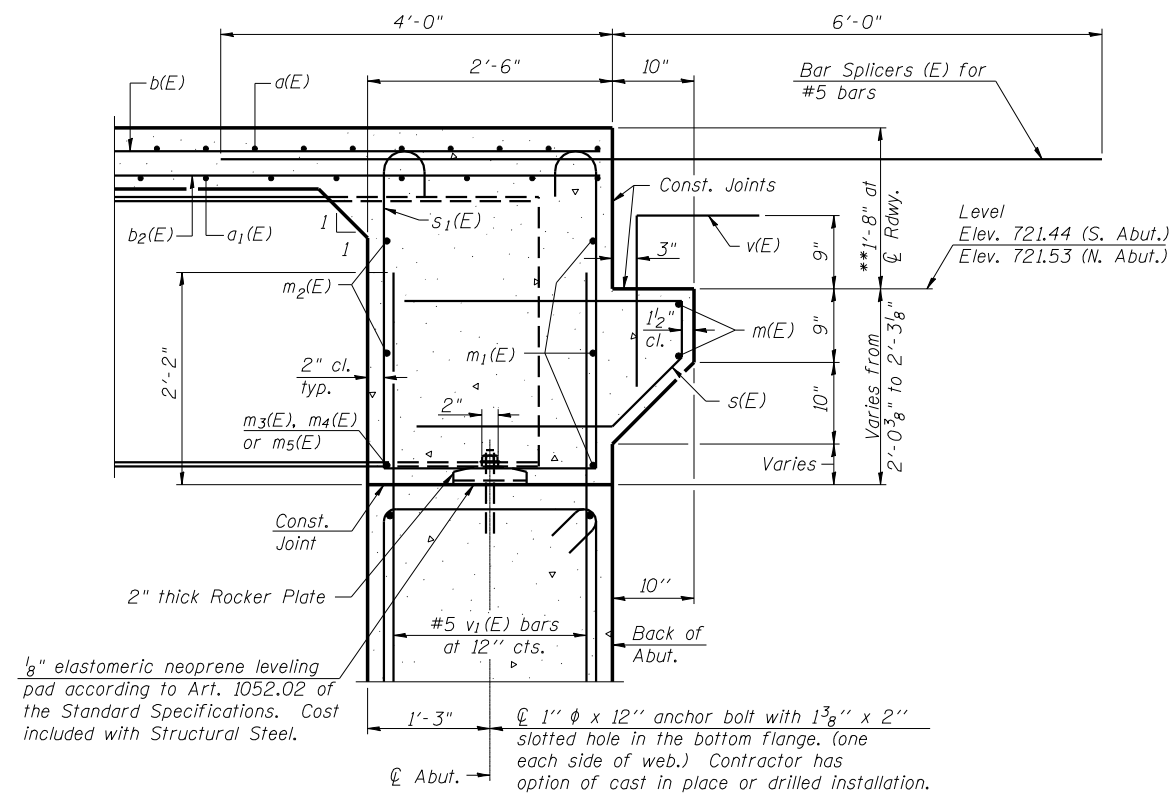
**BAR s(E)**



**BAR s1(E)**



**BAR v(E)**



**SECTION A-A**

\* Cost included with Concrete Superstructure.

\*\*Prior to grinding.

**MIN. BAR LAP**  
 #6 bar = 2'-9"

**SUPERSTRUCTURE DETAILS**

IL. ROUTE 47  
 OVER SANGAMON RIVER  
 F.A.P. ROUTE 326 SEC. (129BR-3) BR  
 CHAMPAIGN COUNTY  
 STATION 746+65.00  
 STRUCTURE NO. 010-0281

CHAMPAIGN, ILLINOIS  
 CHICAGO, ILLINOIS  
 EVANSVILLE, INDIANA  
 INDIANAPOLIS, INDIANA  
 KENOSHA, WISCONSIN  
 SPRING GREEN, WISCONSIN

Clark Ditzel

REVISIONS	NAME	DATE

PROJECT NO. 182287  
 DATE: 5/05

DESIGNED BY: SMM  
 CHECKED BY: MMH  
 APPROVED BY: SMM

DRAWING NUMBER: **S-7**