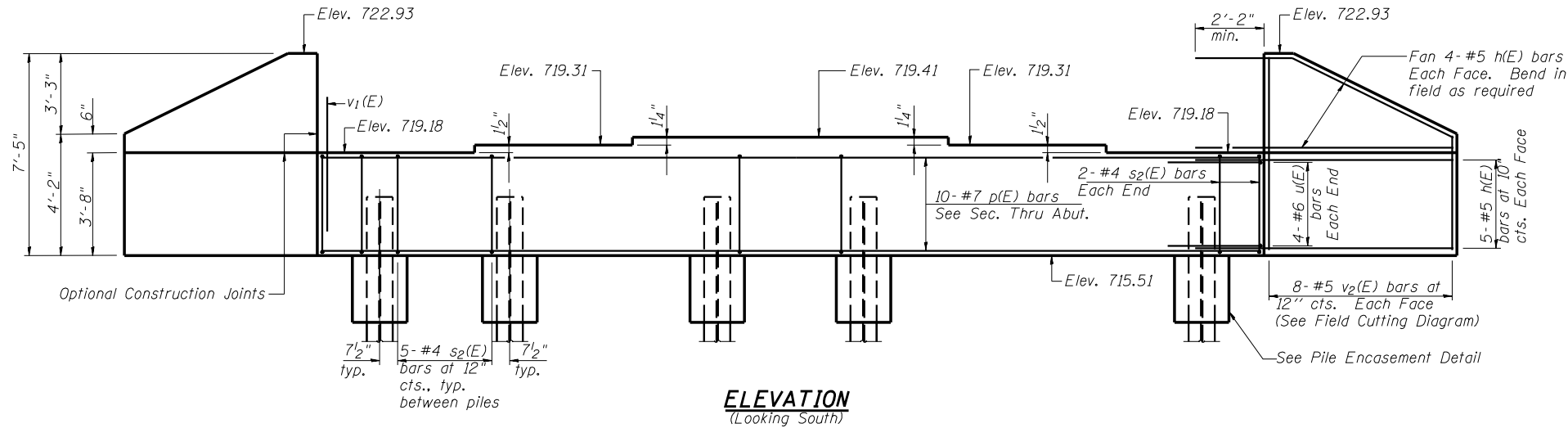
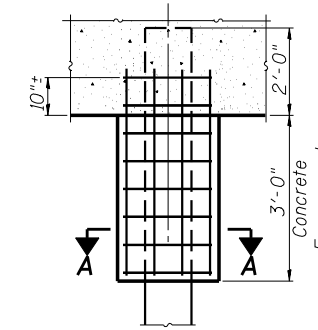


Note: Pour steps monolithically with cap. Space reinforcement in cap to miss anchor bolts. Portion of wingwall below construction joint shall be cast monolithically with cap.

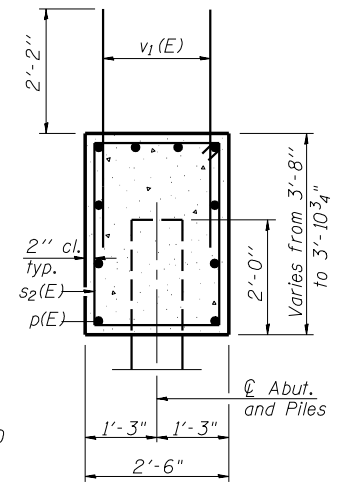


ELEVATION
(Looking South)



SECTION A-A

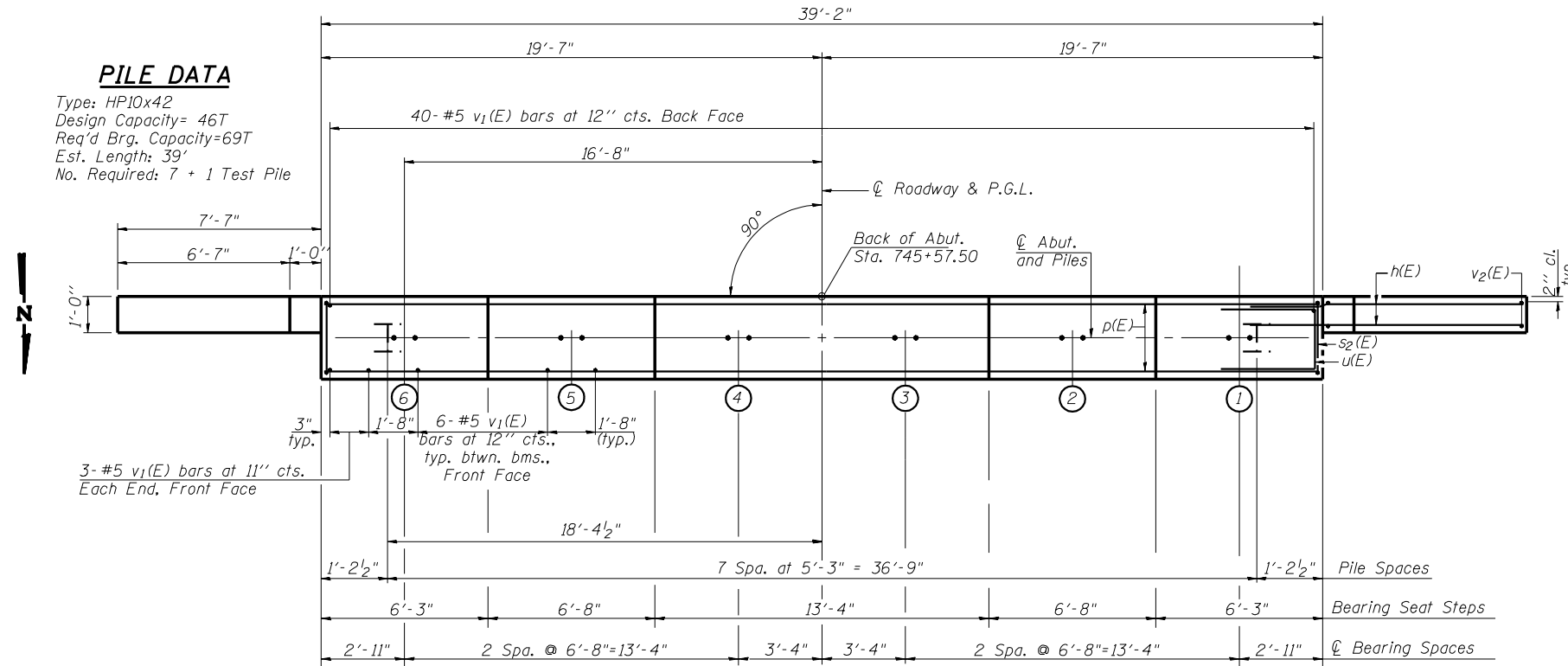
PILE ENCASEMENT DETAIL



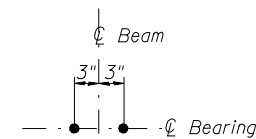
SEC. THRU ABUT.

PILE DATA

Type: HP10x42
Design Capacity= 46T
Req'd Brg. Capacity=69T
Est. Length: 39'
No. Required: 7 + 1 Test Pile



PLAN

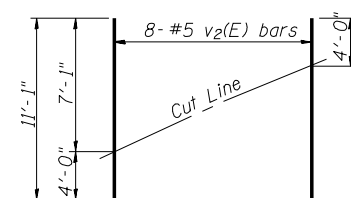


ANCHOR BOLT LAYOUT

BILL OF MATERIAL

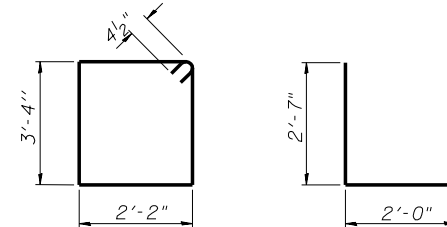
Bar	No.	Size	Length	Shape
h(E)	36	#5	9'-7"	
p(E)	20	#7	38'-10"	
s2(E)	40	#4	11'-9"	□
u(E)	8	#6	7'-2"	□
v1(E)	76	#5	4'-4"	
v2(E)	16	#5	11'-1"	
Concrete Structures		Cu. Yd.	17.2	
Reinforcement Bars, Epoxy Coated		Pound	2,080	
Structure Excavation		Cu. Yd.	92	
Furnishing Steel Piles HP10x42		Foot	273	
Driving Steel Piles HP10x42		Foot	273	
Test Pile Steel HP10x42		Each	1	

Reinforcement bars designated (E) shall be epoxy coated.



FIELD CUTTING DIAGRAM

Order v2(E) full length. Cut as shown and use remainder of bars in opposite face.



BAR s2(E)

BAR u(E)

SOUTH ABUTMENT

IL. ROUTE 47
OVER SANGAMON RIVER
F.A.P. ROUTE 326 SEC. (129BR-3) BR
CHAMPAIGN COUNTY
STATION 746+65.00
STRUCTURE NO. 010-0281

CHAMPAIGN, ILLINOIS
CHICAGO, ILLINOIS
EVANSVILLE, INDIANA
INDIANAPOLIS, INDIANA
KENOSHA, WISCONSIN
SPRING GREEN, WISCONSIN

REVISIONS	DATE	BY	DATE

PROJECT NO. 102287
DATE: 5/05

S-10