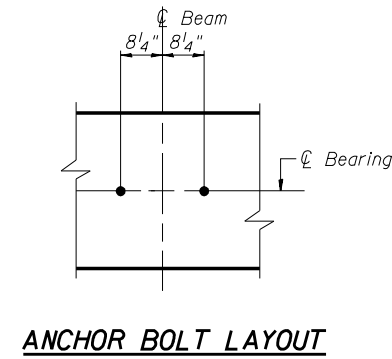
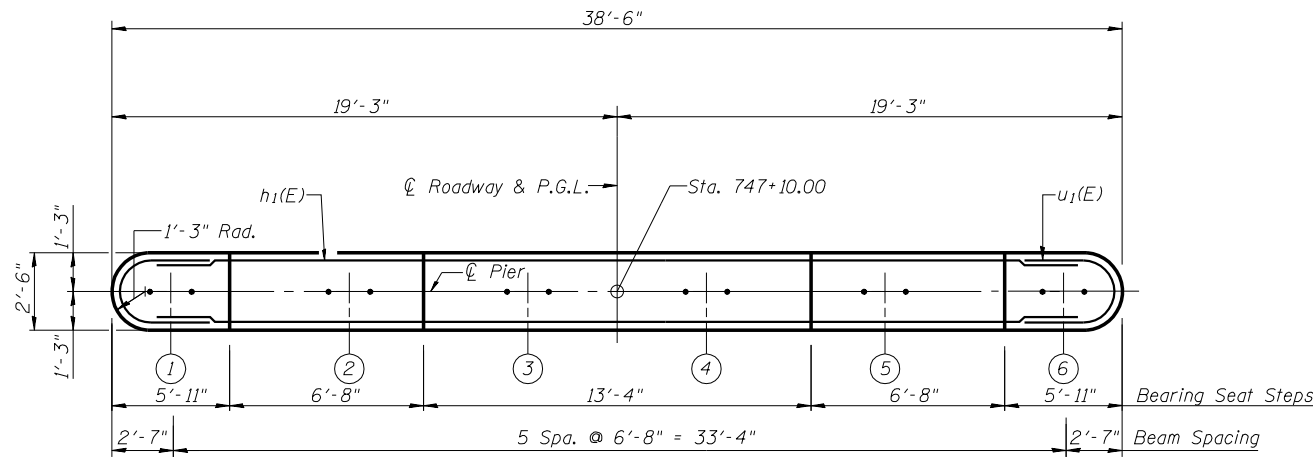


Notes: Space reinforcement in cap to miss anchor bolts.
Four steps monolithically with cap.

PILE DATA

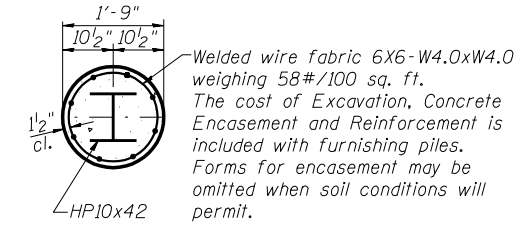
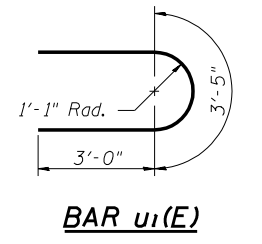
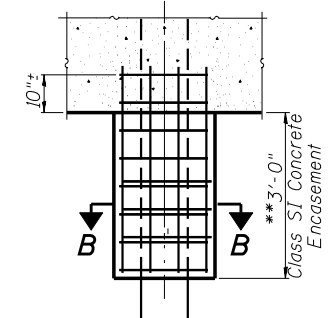
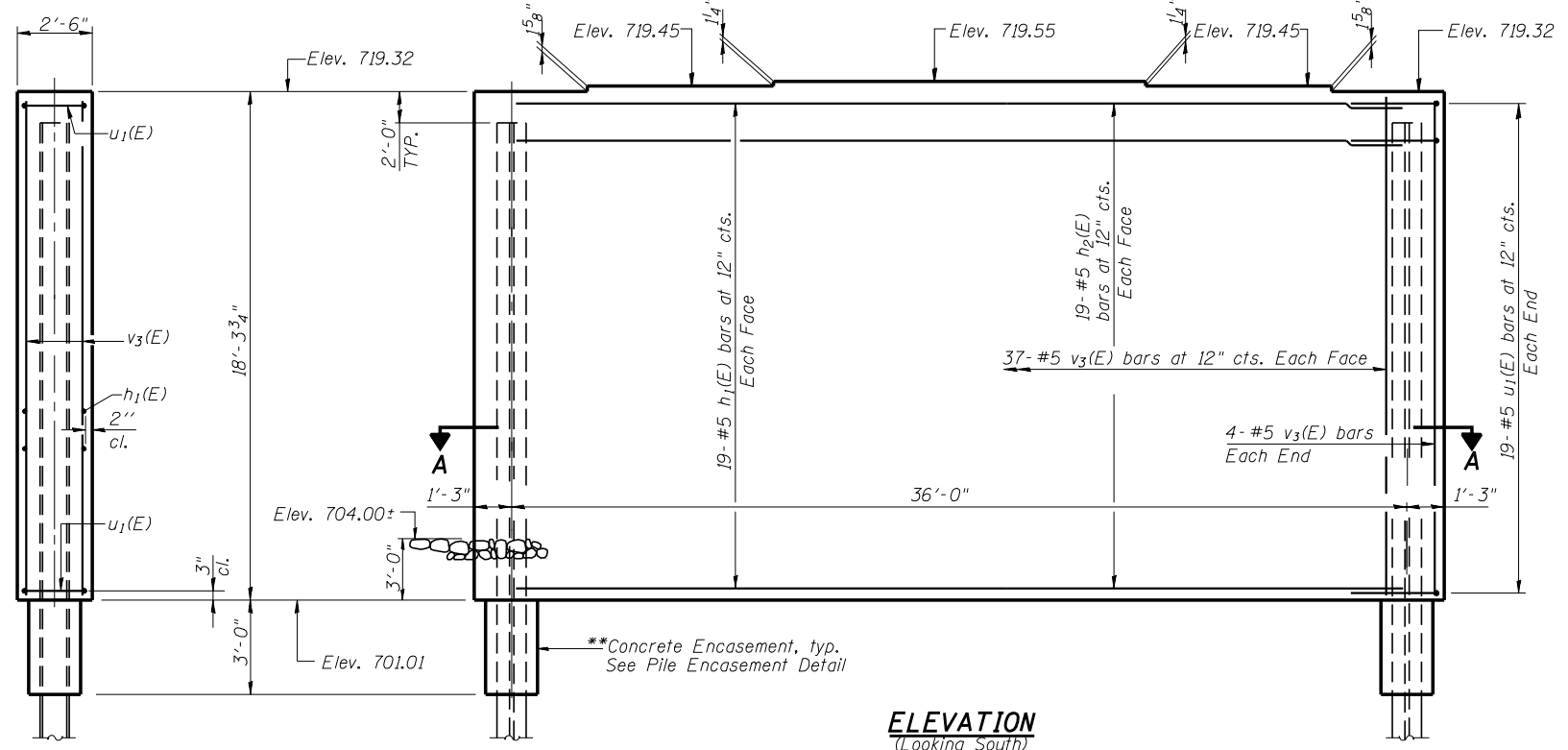
Type: HP10x42
Design Capacity: 50T
Req'd Brg. Capacity: 75T
Est. Length: 46'
No. Req'd: 12 + 1 Test Pile



BILL OF MATERIAL

Bar	No.	Size	Length	Shape
h ₁ (E)	38	#5	36'-0"	—
u ₁ (E)	38	#5	9'-5"	U
v ₃ (E)	82	#5	17'-11"	—
Concrete Structures		Cu. Yd.	64.8	
Reinforcement Bars, Epoxy Coated		Pound	3,330	
Structure Excavation		Cu. Yd.	30	
Furnishing Steel Piles HP10x42		Foot	552	
Driving Steel Piles HP10x42		Foot	552	
Test Pile Steel HP10x42		Each	1	
Underwater Structure Excavation Protection Location 2		Each	1	

Reinforcement Bars designated (E) shall be epoxy coated.

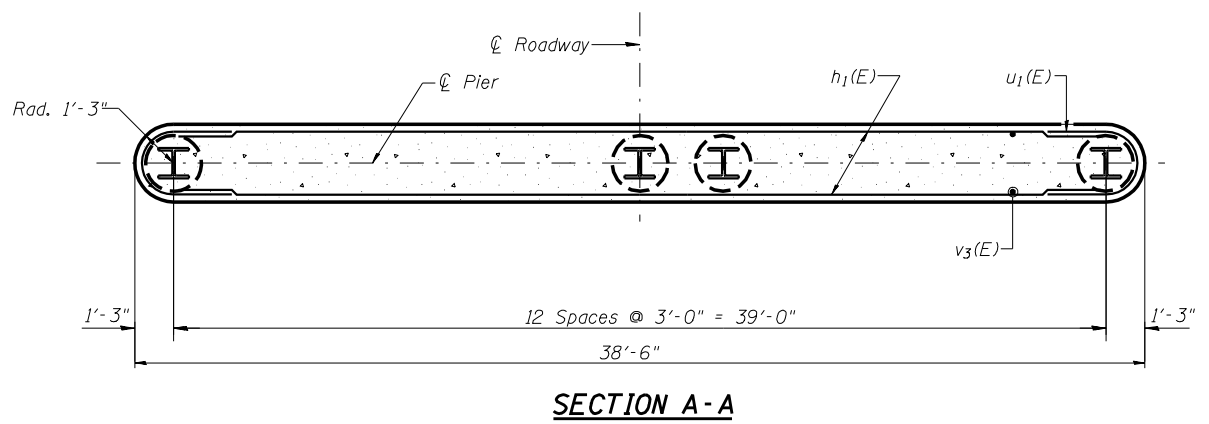


SECTION B-B

PILE ENCASEMENT DETAIL

**Forms shall be placed below Elevation 701.00 after excavation for Pier walls. Reinforcement and Concrete Encasement shall be poured underwater into forms. The cost of Concrete Encasement, Reinforcement, form excavation, and furnishing and placing forms is included with furnishing piles. If a portion of the pier wall is under water, concrete shall be trimmed under water into forms according to Article 503.08 of the Standard Specifications. Concrete shall be trimmed to an Elevation 1'-0" above the water level at the time of Construction.

END VIEW



PIER 2 DETAILS
IL. ROUTE 47
OVER SANGAMON RIVER
F.A.P. ROUTE 326 SEC. 129BR-3) BR
CHAMPAIGN COUNTY
STATION 746+65.00
STRUCTURE NO. 010-0281

CHAMPAIGN, ILLINOIS
CHICAGO, ILLINOIS
EVANSVILLE, INDIANA
INDIANAPOLIS, INDIANA
KENOSHA, WISCONSIN
SPRING GREEN, WISCONSIN

REVISIONS	DATE	BY	DATE