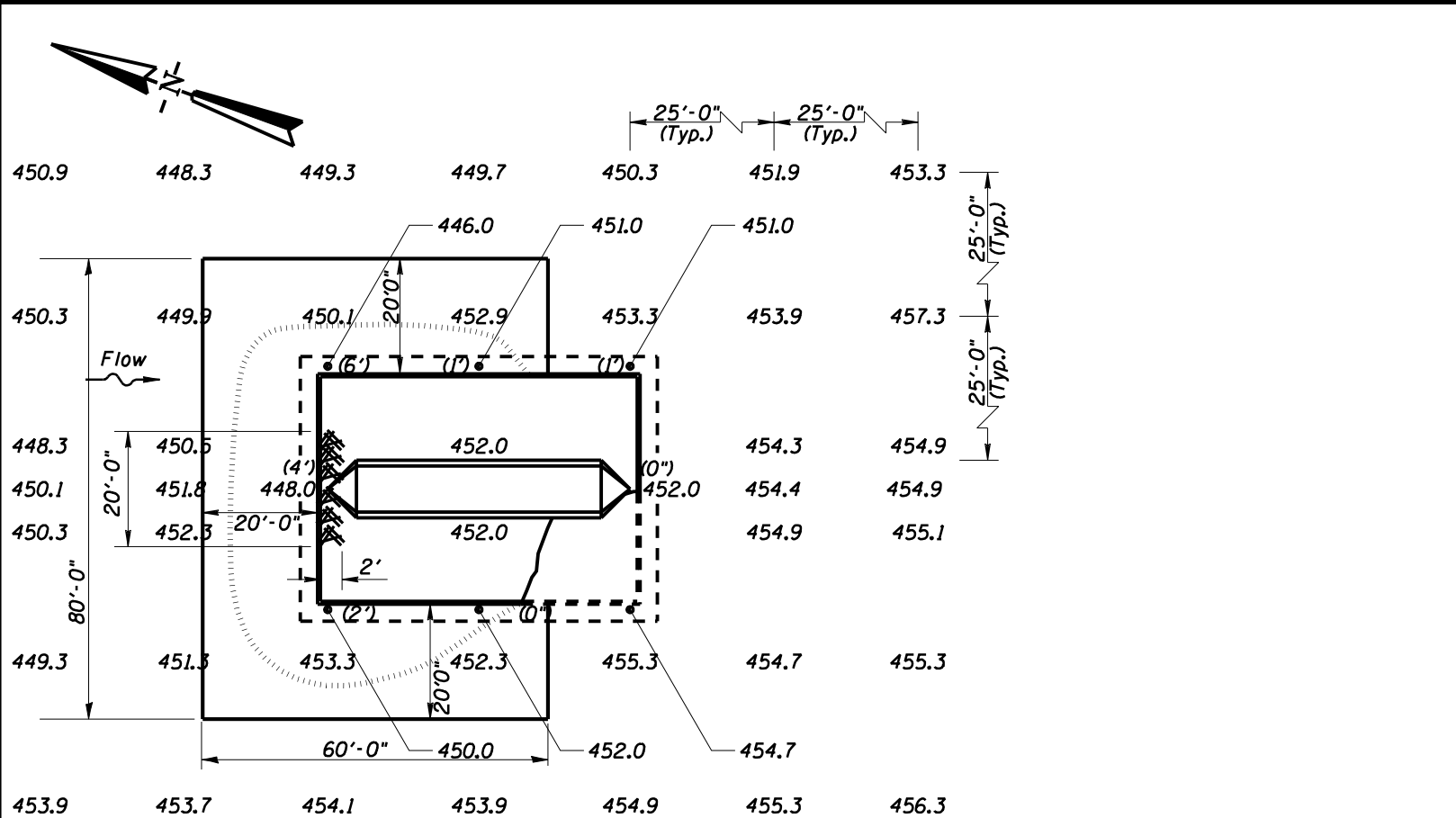
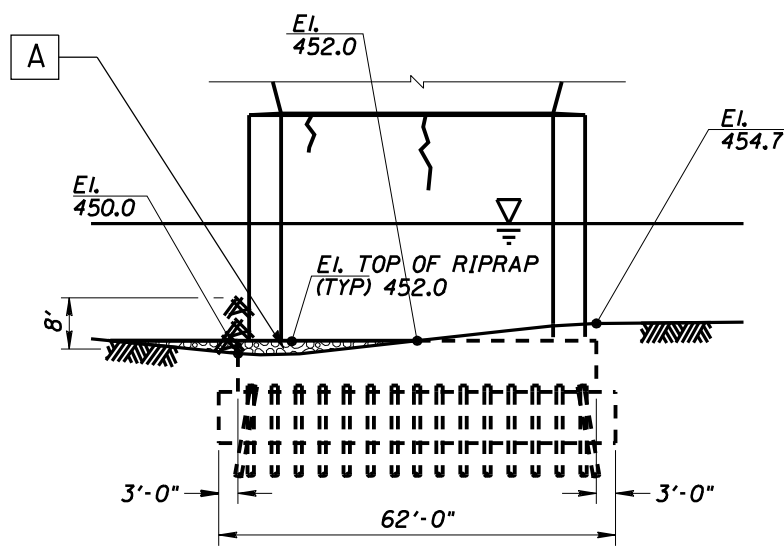


CONTRACT NO. 72A15				
F.P. No.	SECTION	COUNTY	TOTAL SHEETS	SHEET NO.
63	(1-ZB-1)I-5	ADAMS	9	6
STA.	TO STA.			
FED. ROAD DIST. NO.	ILLINOIS	FED. AID PROJECT		

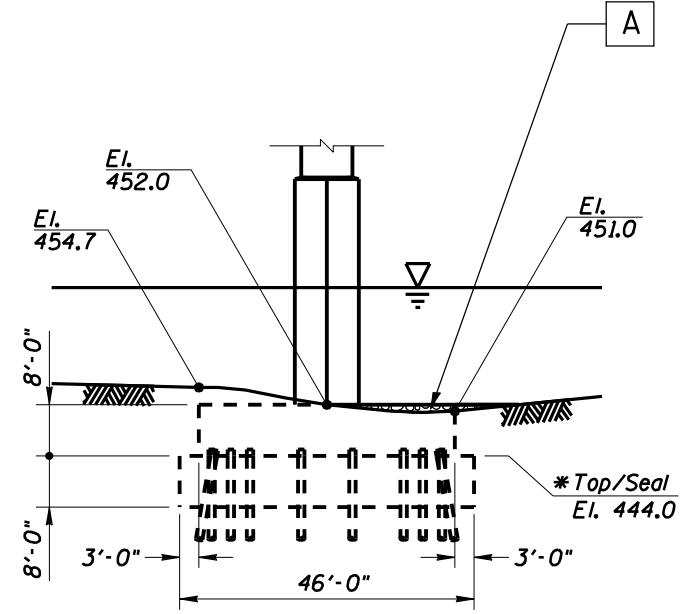


**PLAN**

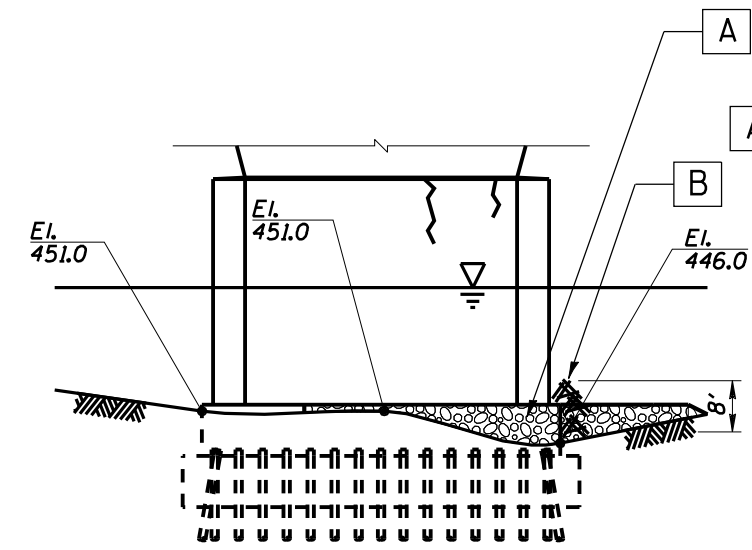
- MATERIAL TO BE USED: PIER 8
- A STONE DUMPED RIPRAP, CLASS A6 248 TONS
  - B DEBRIS REMOVAL 1 L.S.



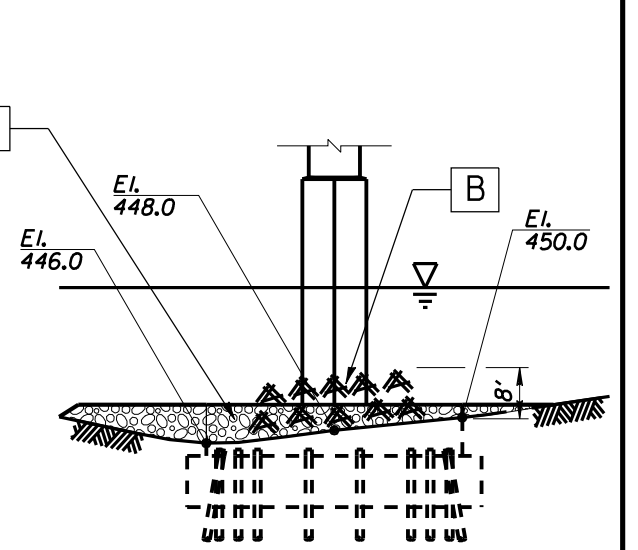
**WEST ELEVATION**



**SOUTH ELEVATION**



**EAST ELEVATION**



**NORTH ELEVATION**

- LEGEND:**
- 460.0 Channel Bottom Elevation
  - Channel Bottom Material
  - (2") Vertical Exposure on Footing Face

**ILLINOIS  
DEPARTMENT OF TRANSPORTATION**

U.S. 24 OVER  
MISSISSIPPI RIVER  
STRUCTURE NUMBER: 001-0068  
SECTION (1-ZB-1)I-5  
ADAMS COUNTY

**PIER 8**