

| F.A.P. RTE. | SECTION    | COUNTY | TOTAL SHEETS | SHEET NO. |
|-------------|------------|--------|--------------|-----------|
| 63          | (1-ZB-1)-5 | ADAMS  | 9            | 1         |

STATE OF ILLINOIS  
DEPARTMENT OF TRANSPORTATION  
DIVISION OF HIGHWAYS

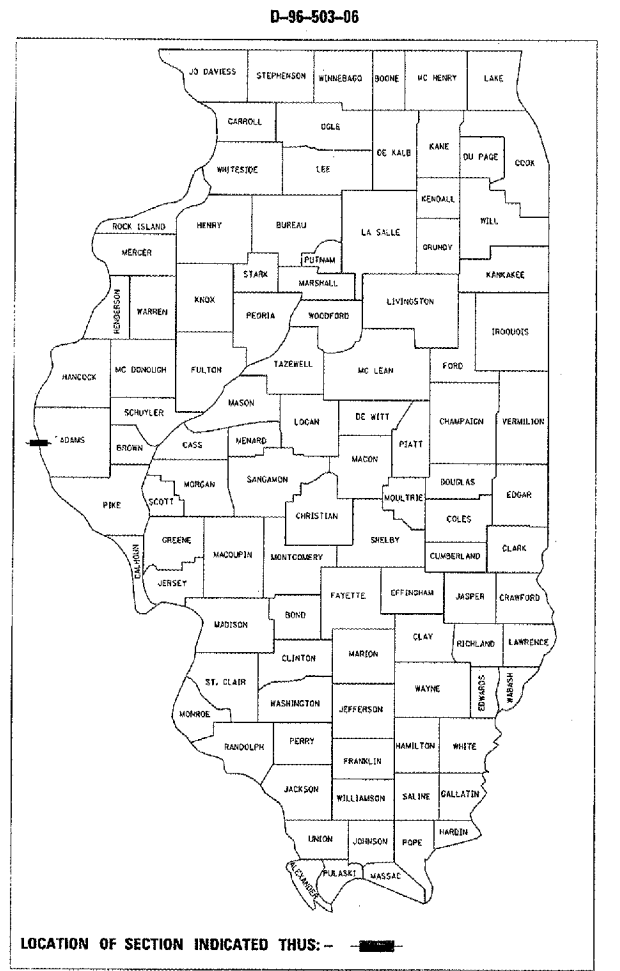
**PROPOSED  
HIGHWAY PLANS**

FAP 63 (US 24)  
SECTION (1-ZB-1)-5  
ADAMS COUNTY  
C-96-518-07

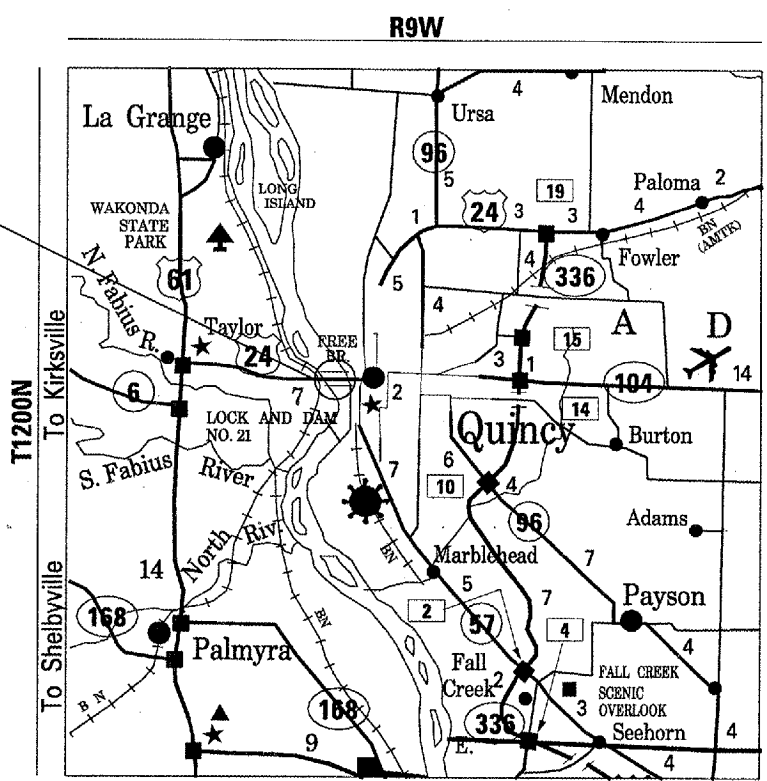
FOR INDEX OF SHEETS, SEE SHEET NO. 2

**PROJECT DESCRIPTION:**

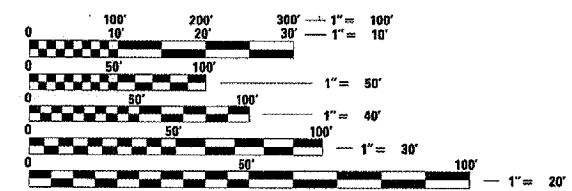
SCOUR MITIGATION- PLACEMENT OF STONE  
DUMPED RIPRAP, CLASS A6 AT PIERS 7, 8, 9,  
11, AND 12. DEBRIS REMOVAL AT PIER 8.



LOCATION OF SECTION INDICATED THUS: —



PROJECT LOCATION  
QUINCY BAYVIEW BRIDGE  
STRUCTURE NO. 001-0068  
PIERS 7, 8, 9, 11, AND 12



FULL SIZE PLANS HAVE BEEN PREPARED USING STANDARD  
ENGINEERING SCALES. REDUCED SIZED PLANS WILL NOT  
CONFORM TO STANDARD SCALES. IN MAKING MEASUREMENTS  
ON REDUCED PLANS, THE ABOVE SCALES MAY BE USED.

J.U.L.I.E.  
JOINT UTILITY LOCATION INFORMATION FOR EXCAVATION  
1-800-892-0123

LOCATION MAP

ROADWAY CLASSIFICATION:  
OTHER PRINCIPLE ARTERIAL  
ADT: 8700 (2006)  
MU: 750 (8.6%)

STATE OF ILLINOIS  
DEPARTMENT OF TRANSPORTATION  
DIVISION OF HIGHWAYS

SUBMITTED August 17, 2006  
*John M. Reed*  
DEPUTY DIRECTOR OF HIGHWAYS, REGION ENGINEER

October 13, 2006  
*Mike Stone*  
ENGINEER OF DESIGN AND ENVIRONMENT

October 13, 2006  
*Milton R. Sees* P.E.  
DIRECTOR OF HIGHWAYS, CHIEF ENGINEER

**PRINTED BY THE AUTHORITY  
OF THE STATE OF ILLINOIS**

PROJECT ENGINEER: SAL MADONIA (217) 782-4761  
SQUAD LEADER: MARCUS BRUCE (217) 524-0946

| F.A.P. RTE.               | SECTION     | COUNTY        | TOTAL SHEETS     | SHEET NO. |
|---------------------------|-------------|---------------|------------------|-----------|
| 63                        | (1-ZB-1)I-5 | ADAMS         | 9                | 2         |
| STA. _____                |             | TO STA. _____ |                  |           |
| FED. ROAD DIST. NO. _____ |             | ILLINOIS      | FED. AID PROJECT |           |

INDEX OF SHEETS

PAGE

|   |   |
|---|---|
| COVER SHEET   | 1 |
| INDEX OF SHEETS, GENERAL NOTES, AND SIGNATURE BLOCK | 2 |
| SUMMARY OF QUANTITIES                               | 3 |
| PLANVIEW - BAYVIEW BRIDGE                           | 4 |
| PIER 7 DETAIL                                       | 5 |
| PIER 8 DETAIL                                       | 6 |
| PIER 9 DETAIL                                       | 7 |
| PIER 11 DETAIL                                      | 8 |
| PIER 12 DETAIL                                      | 9 |

COMMITMENTS

THE CONTRACTOR SHALL NOTIFY THE COAST GUARD 30 DAYS PRIOR TO WORKING IN THE RIVER. THE CONTRACTOR SHALL PRESENT A PLAN TO THE COAST GUARD ON HOW THE RIPRAP WILL BE PLACED ALONG WITH A TIME FRAME.

CONTACT:           ROGER WIEBUSH  
                           US COAST GUARD  
                           122 SPRUCE STREET  
                           ST. LOUIS, MO. 63103  
                           PHONE - (314) 269 - 2378

GENERAL NOTES

THE CONTRACTOR SHALL BE AWARE OF THE CONDITIONS OF THE 404 PERMIT

THE CONTRACTOR SHALL TAKE STREAM BED SOUNDINGS BEFORE AND AFTER PLACING RIPRAP. THE COST SHALL BE INCLUDED WITH THE "STONE DUMPED RIPRAP, CLASS A6".

DEBRIS REMOVAL AT PIER 8 SHALL BE DONE ACCORDING TO THE SPECIAL PROVISION AND TO THE SATISFACTION OF THE RESIDENT ENGINEER.

INFORMATION PROVIDED IN THESE PLANS AND SPECIAL PROVISIONS WERE DEVELOPED FROM A CONSULTANT'S RECENT DIVE INSPECTION.

|                                 |                               |
|---------------------------------|-------------------------------|
| <b>DISTRICT SIX</b>             |                               |
| EXAMINED                        | <u>Aug 16</u> 20 <u>06</u>    |
| <i>[Signature]</i>              |                               |
| OPERATIONS ENGINEER             |                               |
| EXAMINED                        | <u>Aug 16</u> 20 <u>06</u>    |
| <i>[Signature]</i>              |                               |
| PROGRAM IMPLEMENTATION ENGINEER |                               |
| EXAMINED                        | <u>AUGUST 17</u> 20 <u>06</u> |
| <i>[Signature]</i>              |                               |
| PROGRAM DEVELOPMENT ENGINEER    |                               |

**ILLINOIS  
DEPARTMENT OF TRANSPORTATION**

U.S. 24 OVER  
MISSISSIPPI RIVER  
STRUCTURE NUMBER: 001-0068  
SECTION (1-ZB-1)I-5  
ADAMS COUNTY

**GENERAL NOTES**

|                     |             |                  |              |           |
|---------------------|-------------|------------------|--------------|-----------|
| F.A.P. RTE.         | SECTION     | COUNTY           | TOTAL SHEETS | SHEET NO. |
| 64                  | (1-ZB-1)I-5 | ADAMS            | 9            | 3         |
| STA.                |             | TO STA.          |              |           |
| FED. ROAD DIST. NO. | ILLINOIS    | FED. AID PROJECT |              |           |

## SUMMARY OF QUANTITIES

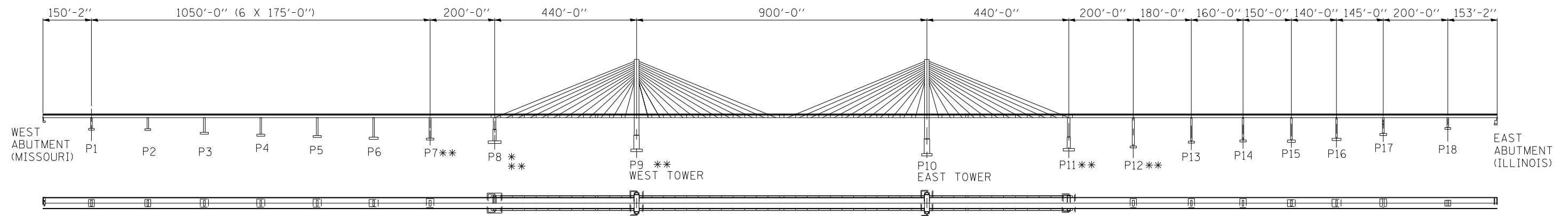
|                |                               |             |  |
|----------------|-------------------------------|-------------|--|
|                |                               |             | <b>50% ILLINOIS<br/>50% MISSOURI</b><br><br>URBAN<br>SFTY - 2A |
| <i>CODE NO</i> | <i>ITEM</i>                   | <i>UNIT</i> | <i>QUANTITY</i>  |
| Z0015500       | DEBRIS REMOVAL                | L SUM       | 1  |
| 28100811       | STONE DUMPED RIPRAP, CLASS A6 | TON         | 3603   |
| 67100100       | MOBILIZATION                  | L SUM       | 1  |

**ILLINOIS  
DEPARTMENT OF TRANSPORTATION**

U.S. 24 OVER  
 MISSISSIPPI RIVER  
 STRUCTURE NUMBER: 001-0068  
 SECTION (1-ZB-1)I-5  
 ADAMS COUNTY

**SUMMARY OF QUANTITIES**

| F.A.P. RTE.         | SECTION     | COUNTY           | TOTAL SHEETS | SHEET NO. |
|---------------------|-------------|------------------|--------------|-----------|
| 63                  | (1-ZB-1)I-5 | ADAMS            | 9            | 4         |
| STA.                |             | TO STA.          |              |           |
| FED. ROAD DIST. NO. | ILLINOIS    | FED. AID PROJECT |              |           |



\* DEBRIS REMOVAL  
 \*\* STONED DUMPED RIPRAP A-6

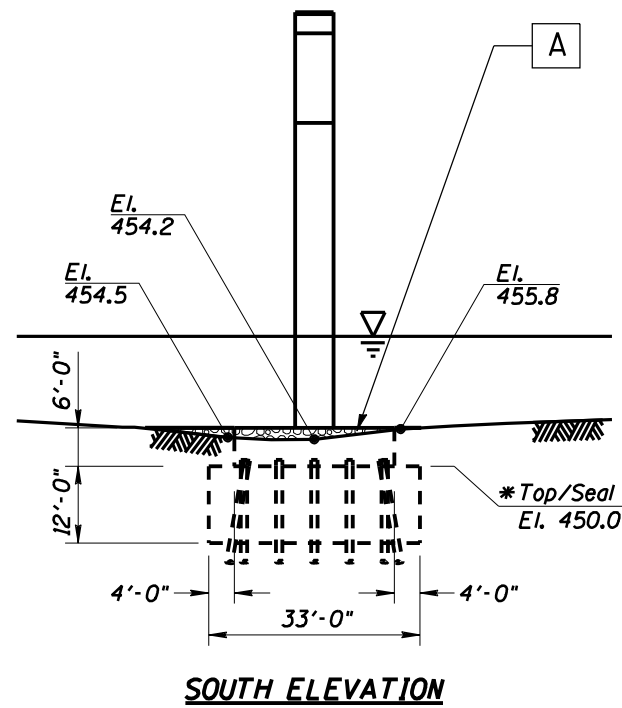
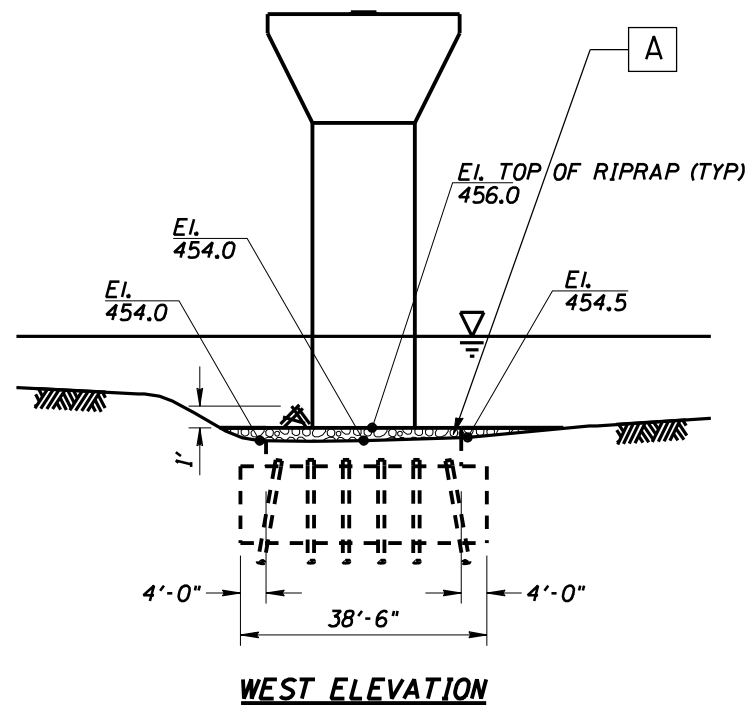
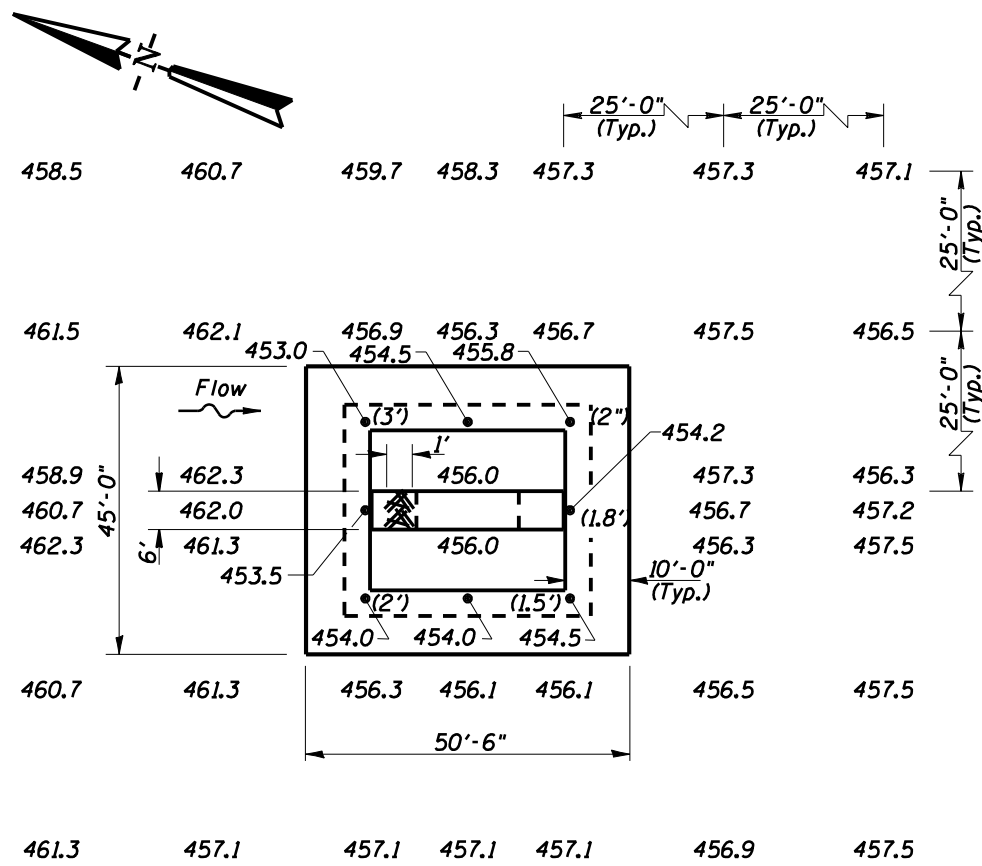
**ILLINOIS  
 DEPARTMENT OF TRANSPORTATION**

U.S. 24 OVER  
 MISSISSIPPI RIVER  
 STRUCTURE NUMBER: 001-0068  
 SECTION (1-ZB-1)I-5  
 ADAMS COUNTY

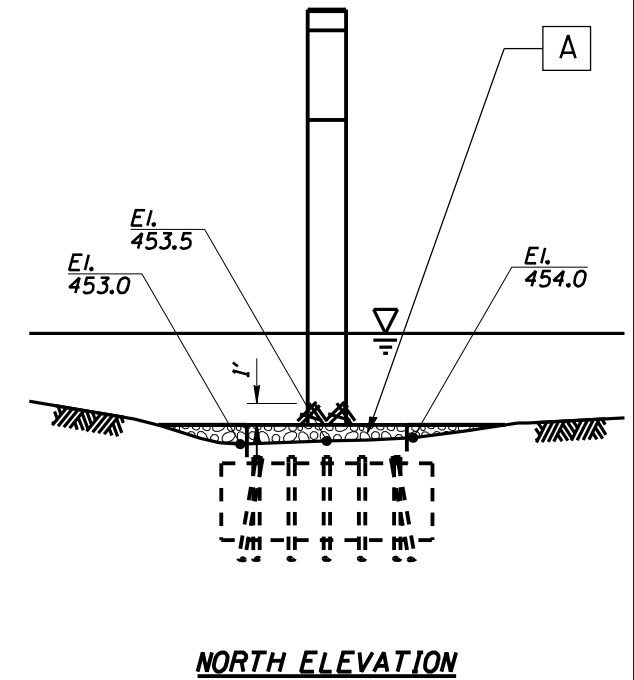
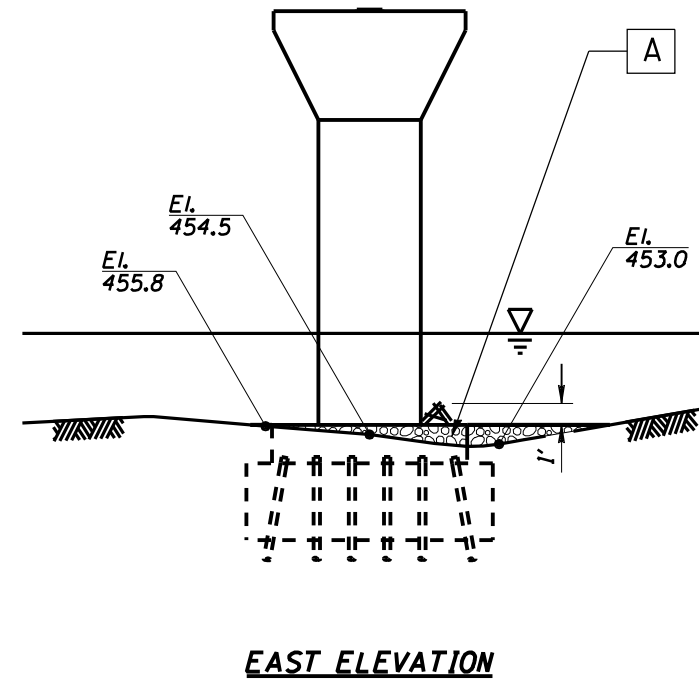
**PLAN VIEW**

PLOT DATE : 8/17/2006  
 FILE NAME : c:\p\projects\650306\shlgpe.dgn  
 PLOT SCALE : 317.6471' / IN.  
 USER NAME : laughlin-1

| F.P. R.T.E.         | SECTION     | COUNTY                    | TOTAL SHEETS | SHEET NO. |
|---------------------|-------------|---------------------------|--------------|-----------|
| 63                  | (1-ZB-1)I-5 | ADAMS                     | 9            | 5         |
| STA.                |             | TO STA.                   |              |           |
| FED. ROAD DIST. NO. |             | ILLINOIS FED. AID PROJECT |              |           |



MATERIAL TO BE USED: PIER 7  
**A** STONE DUMPED RIPRAP, CLASS A6 107 TONS



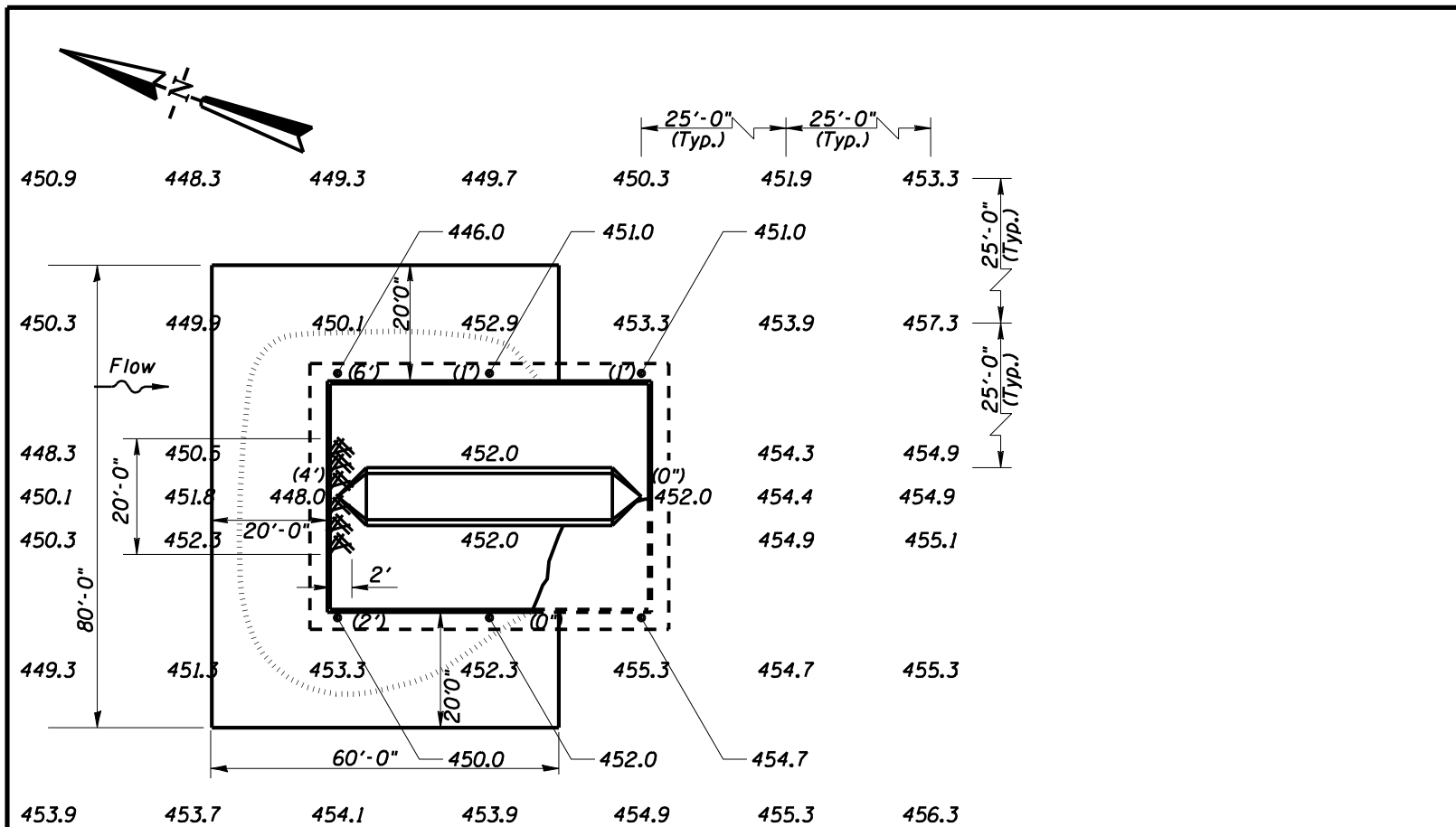
- LEGEND:
- 460.0 Channel Bottom Elevation
  - Channel Bottom Material
  - (2") Vertical Exposure on Footing Face

**ILLINOIS  
 DEPARTMENT OF TRANSPORTATION**

U.S. 24 OVER  
 MISSISSIPPI RIVER  
 STRUCTURE NUMBER: 001-0068  
 SECTION (1-ZB-1)I-5  
 ADAMS COUNTY

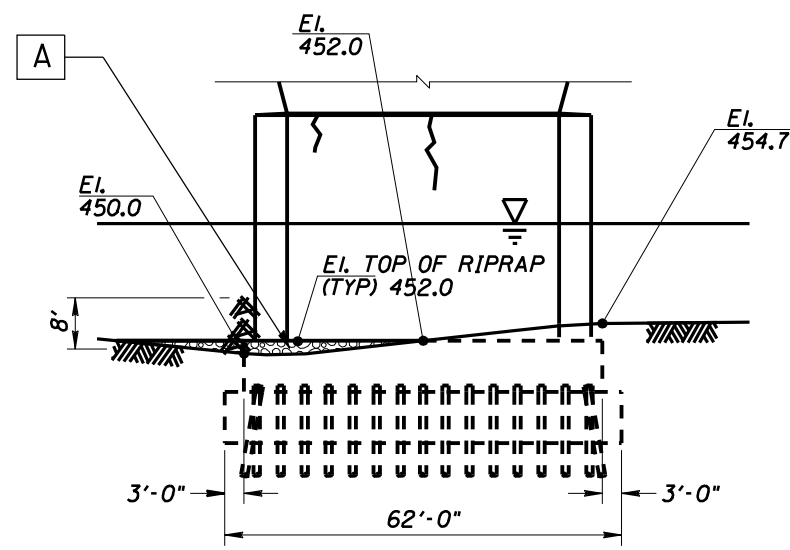
**PIER 7**

| F.P. R.T.E.         | SECTION     | COUNTY                    | TOTAL SHEETS | SHEET NO. |
|---------------------|-------------|---------------------------|--------------|-----------|
| 63                  | (1-ZB-1)I-5 | ADAMS                     | 9            | 6         |
| STA.                |             | TO STA.                   |              |           |
| FED. ROAD DIST. NO. |             | ILLINOIS FED. AID PROJECT |              |           |

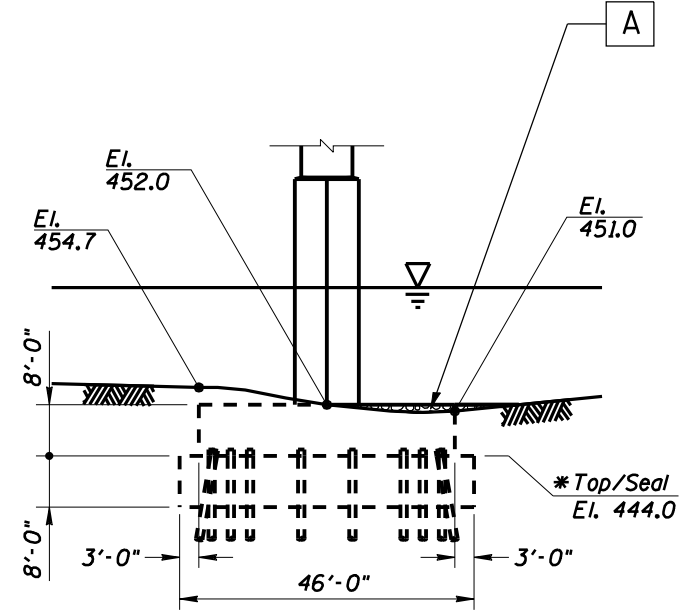


**PLAN**

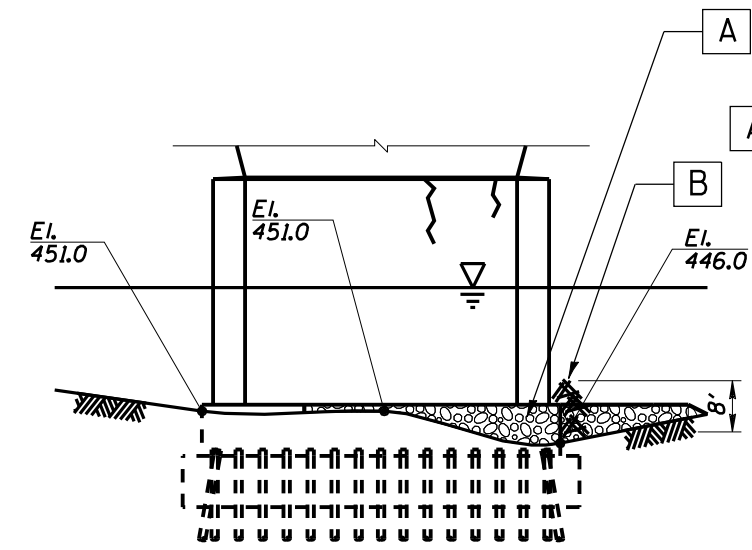
- MATERIAL TO BE USED: PIER 8
- A STONE DUMPED RIPRAP, CLASS A6 248 TONS
  - B DEBRIS REMOVAL 1 L.S.



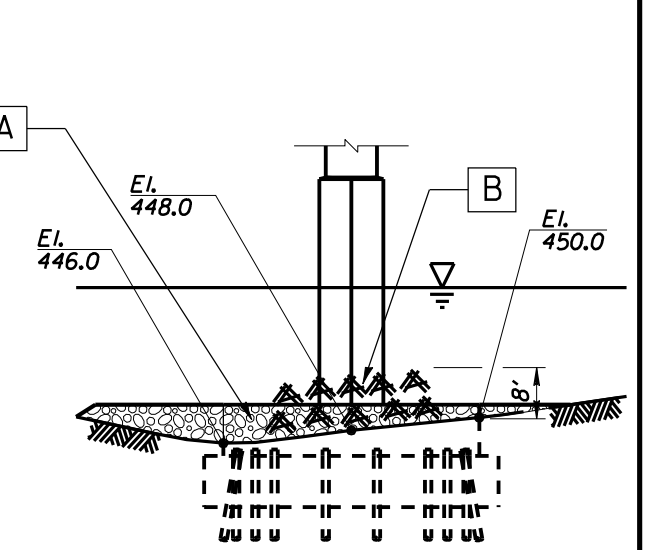
**WEST ELEVATION**



**SOUTH ELEVATION**



**EAST ELEVATION**



**NORTH ELEVATION**

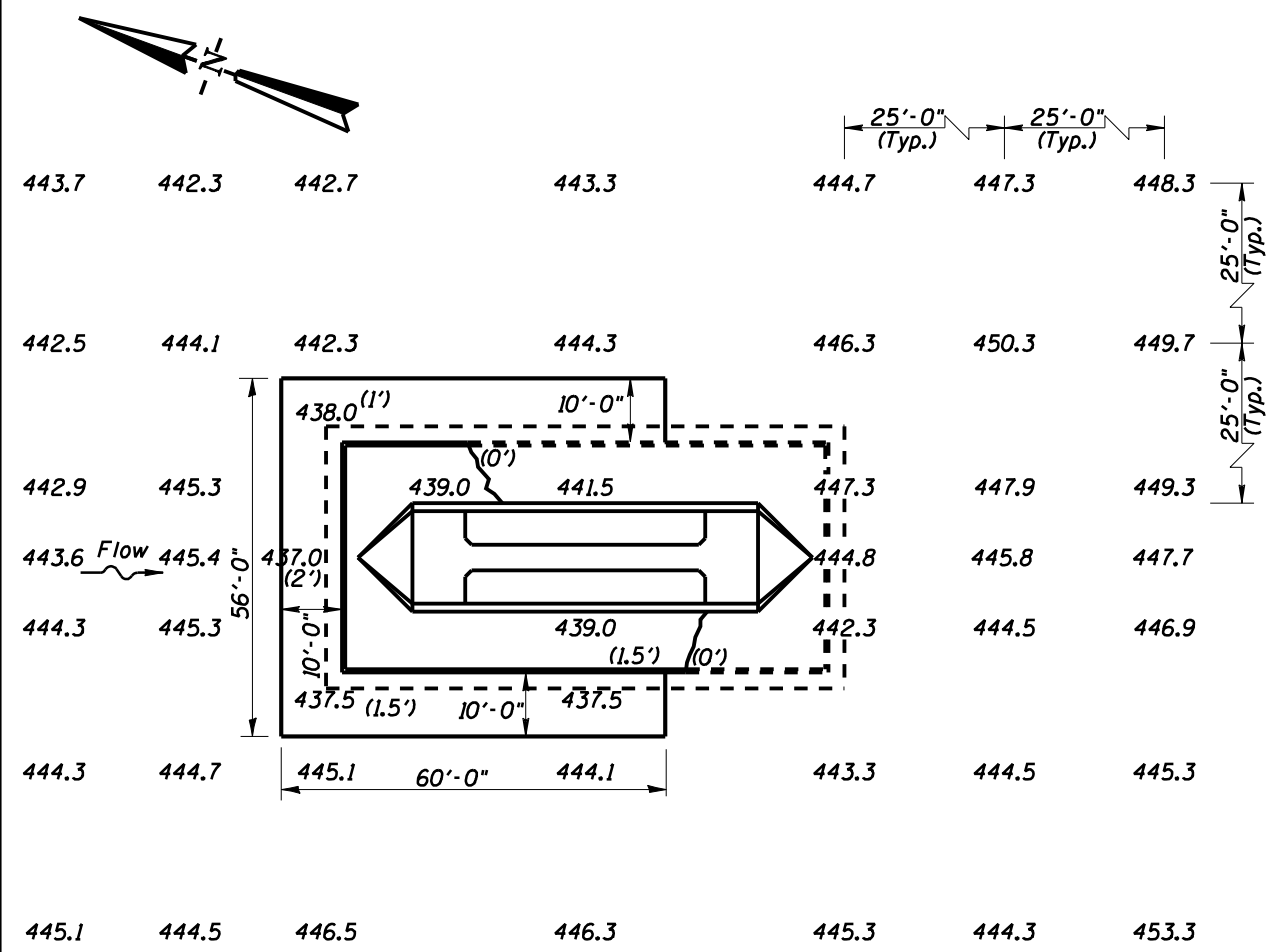
- LEGEND:**
- 460.0 Channel Bottom Elevation
  - Channel Bottom Material
  - (2") Vertical Exposure on Footing Face

**ILLINOIS  
DEPARTMENT OF TRANSPORTATION**

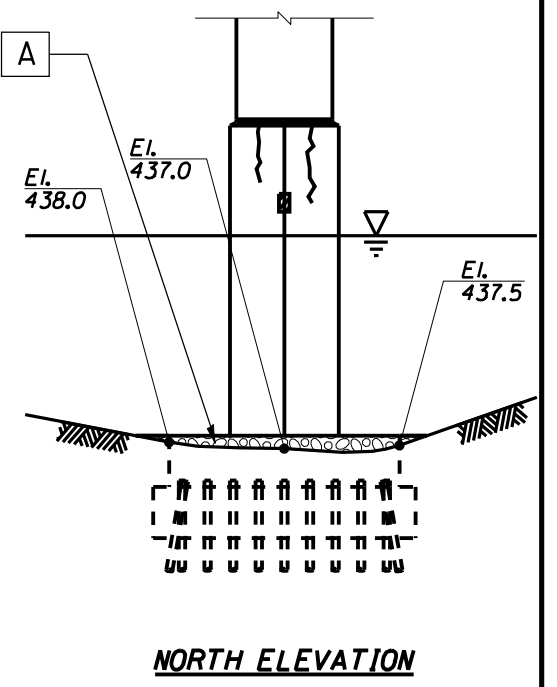
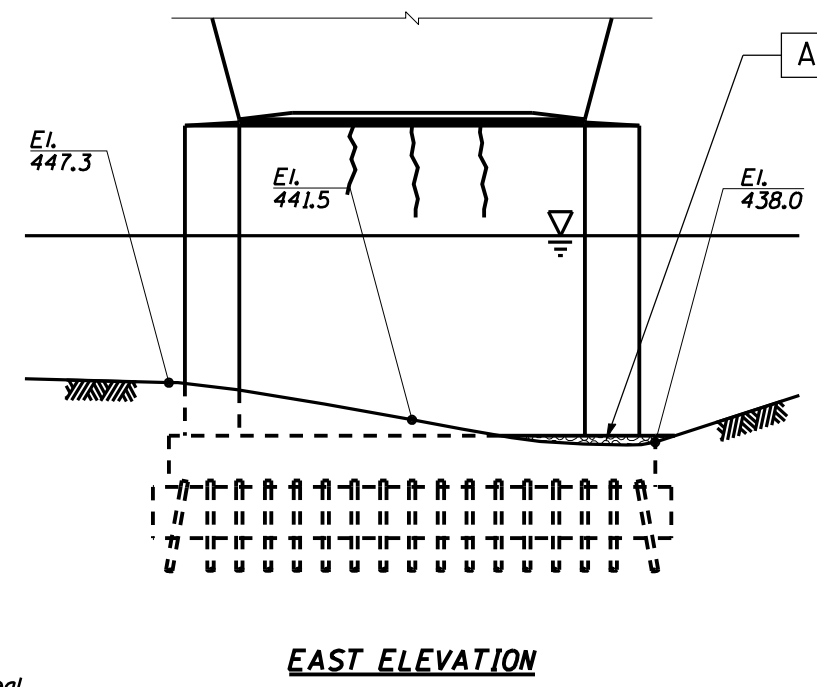
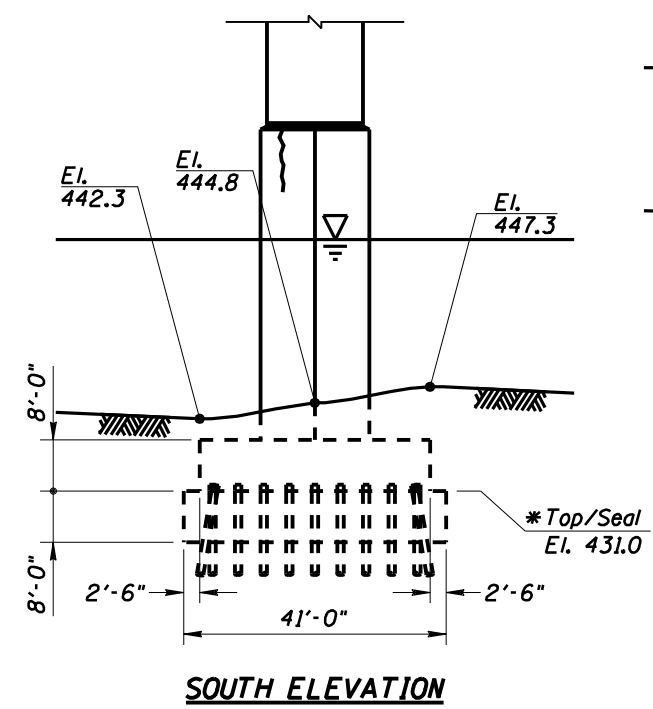
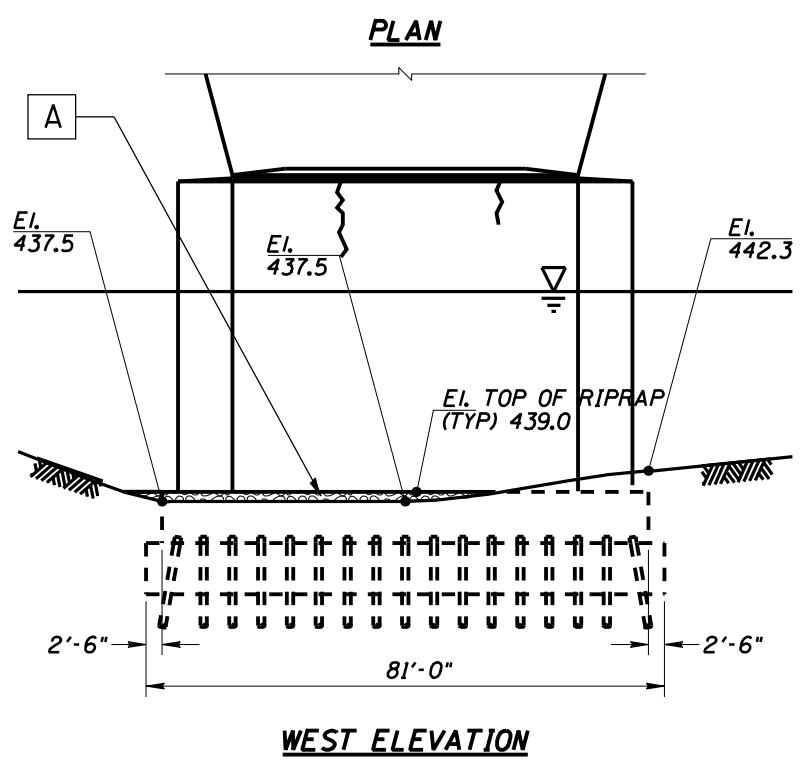
U.S. 24 OVER  
MISSISSIPPI RIVER  
STRUCTURE NUMBER: 001-0068  
SECTION (1-ZB-1)I-5  
ADAMS COUNTY

**PIER 8**

| F.P. RTE.           | SECTION     | COUNTY           | TOTAL SHEETS | SHEET NO. |
|---------------------|-------------|------------------|--------------|-----------|
| 63                  | (1-ZB-1)I-5 | ADAMS            | 9            | 7         |
| STA.                |             | TO STA.          |              |           |
| FED. ROAD DIST. NO. | ILLINOIS    | FED. AID PROJECT |              |           |



MATERIAL TO BE USED: PIER 9  
**A** STONE DUMPED RIPRAP, CLASS A6 135 TONS



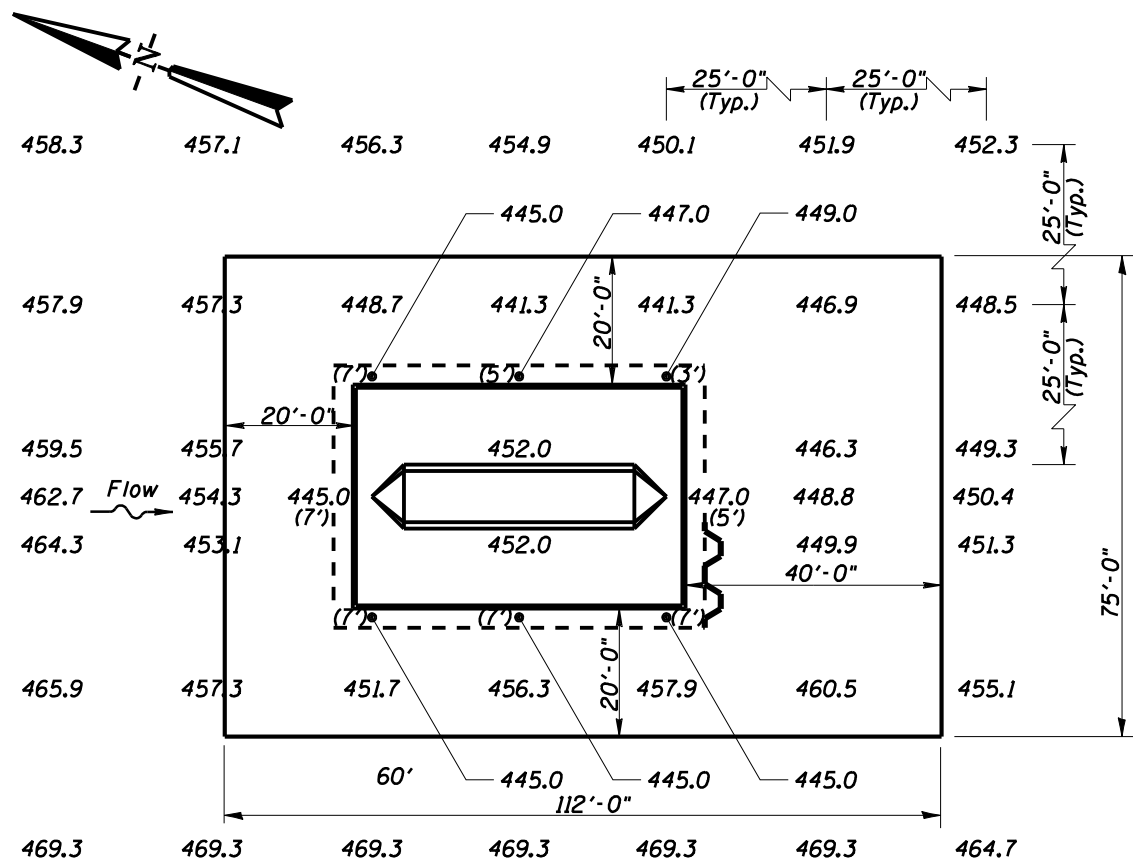
- LEGEND:**
- 460.0 Channel Bottom Elevation
  - Channel Bottom Material
  - (2") Vertical Exposure on Footing Face

**ILLINOIS  
 DEPARTMENT OF TRANSPORTATION**

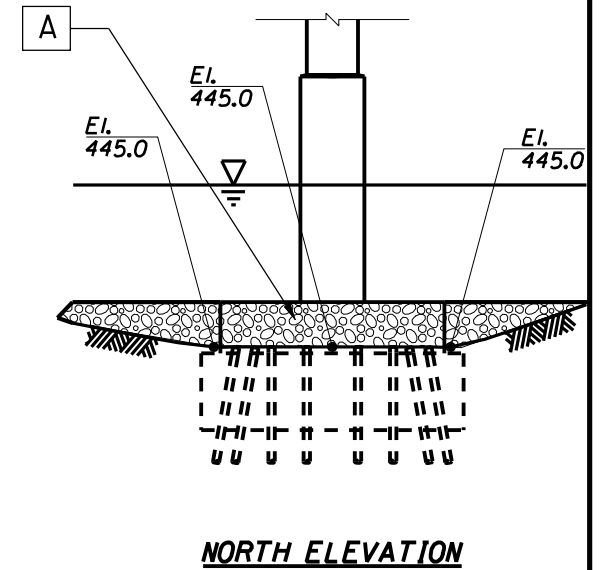
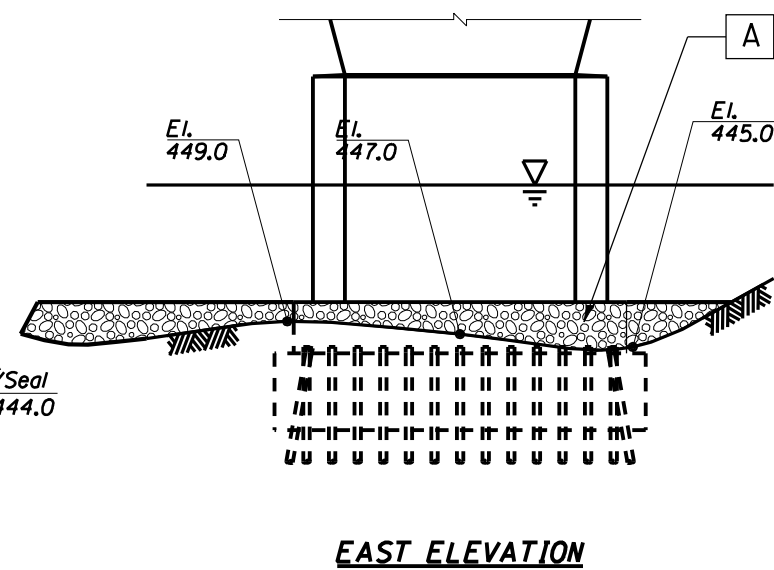
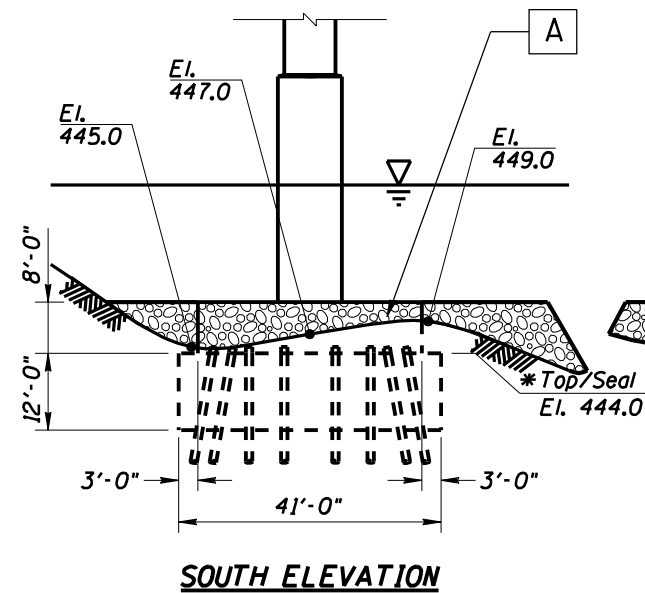
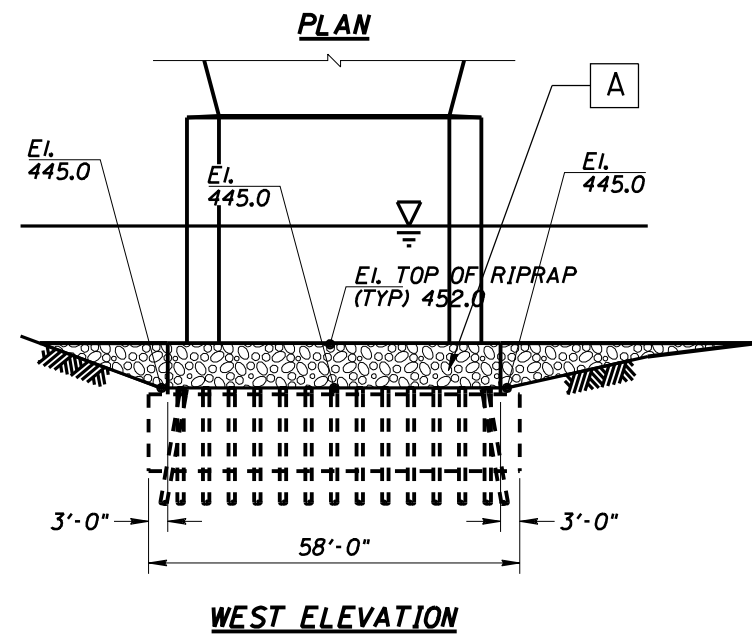
U.S. 24 OVER  
 MISSISSIPPI RIVER  
 STRUCTURE NUMBER: 001-0068  
 SECTION (1-ZB-1)I-5  
 ADAMS COUNTY

**PIER 9**

| F.P.P. RTE.         | SECTION     | COUNTY                    | TOTAL SHEETS | SHEET NO. |
|---------------------|-------------|---------------------------|--------------|-----------|
| 63                  | (1-ZB-1)I-5 | ADAMS                     | 9            | 8         |
| STA.                |             | TO STA.                   |              |           |
| FED. ROAD DIST. NO. |             | ILLINOIS FED. AID PROJECT |              |           |



**A** MATERIAL TO BE USED: PIER II  
**A** STONE DUMPED RIPRAP, CLASS A6 1388 TONS



- LEGEND:**
- 460.0 Channel Bottom Elevation
  - Channel Bottom Material
  - (5') Vertical Exposure on Footing Face

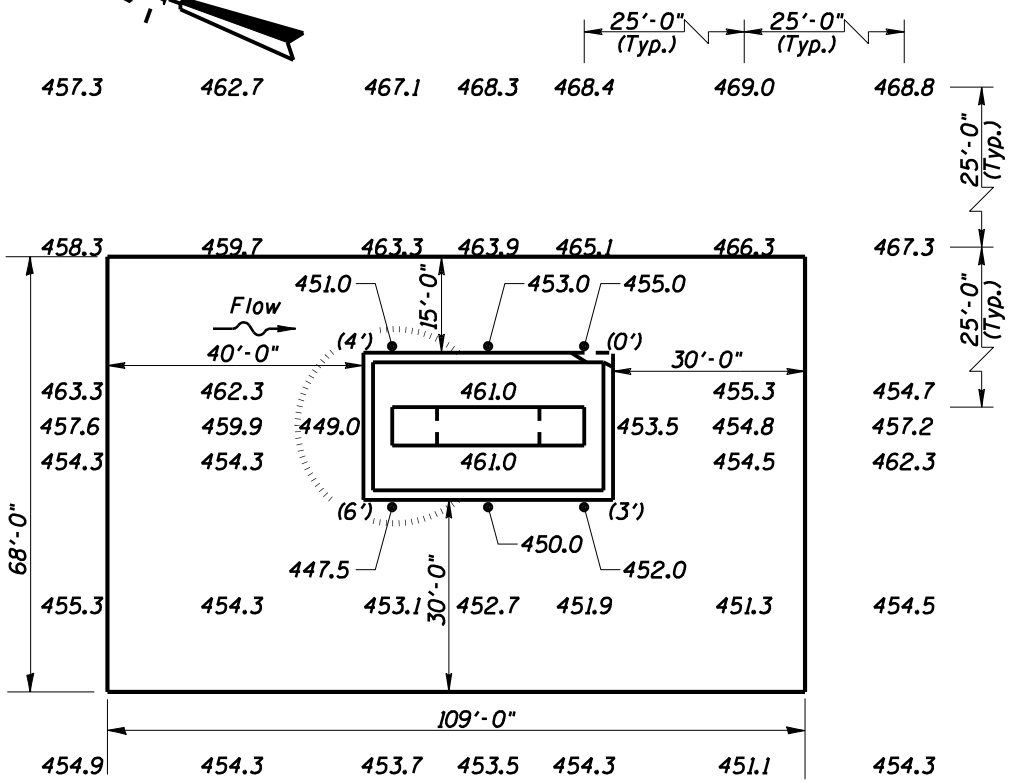
**ILLINOIS  
 DEPARTMENT OF TRANSPORTATION**

U.S. 24 OVER  
 MISSISSIPPI RIVER  
 STRUCTURE NUMBER: 001-0068  
 SECTION (1-ZB-1)I-5  
 ADAMS COUNTY

**PIER II**

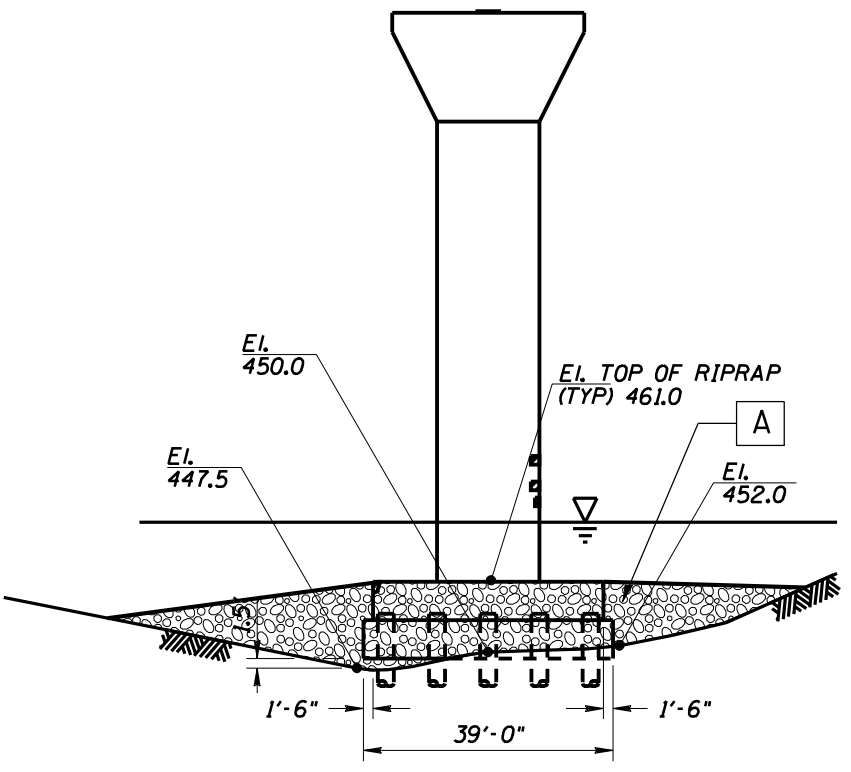


| F.P.P. RTE.         | SECTION     | COUNTY   | TOTAL SHEETS     | SHEET NO. |
|---------------------|-------------|----------|------------------|-----------|
| 63                  | (1-ZB-1)I-5 | ADAMS    | 9                | 9         |
| STA.                |             | TO STA.  |                  |           |
| FED. ROAD DIST. NO. |             | ILLINOIS | FED. AID PROJECT |           |

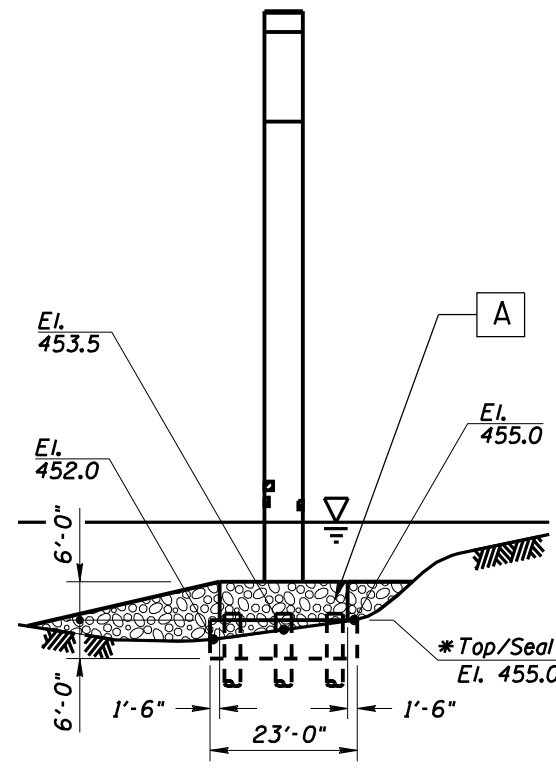


**PLAN**

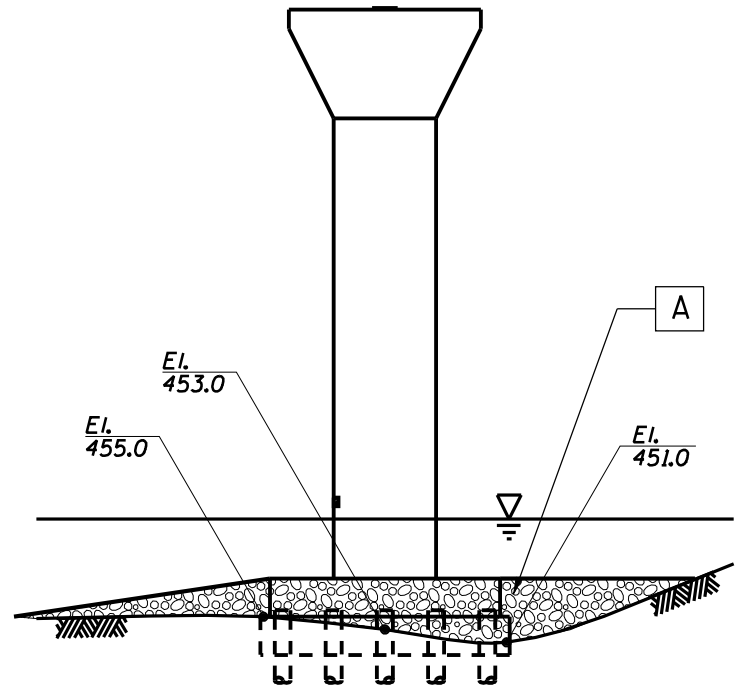
MATERIAL TO BE USED: PIER 12  
**A** STONE DUMPED RIPRAP, CLASS A6 1725 TONS



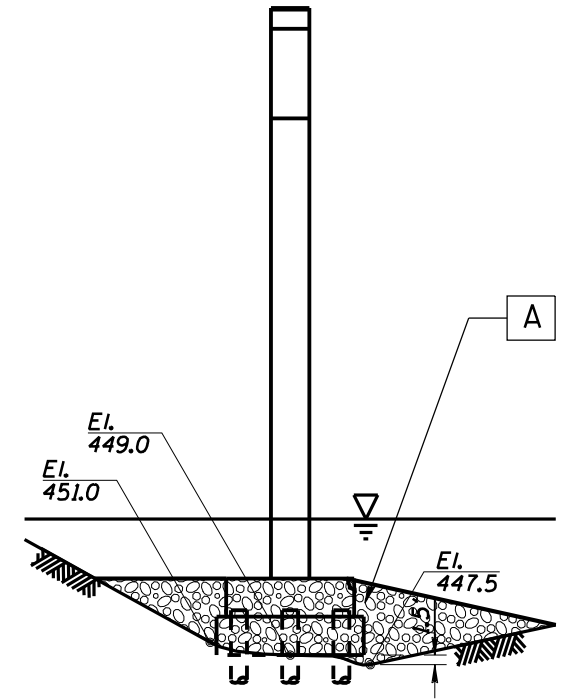
**WEST ELEVATION**



**SOUTH ELEVATION**



**EAST ELEVATION**



**NORTH ELEVATION**

- LEGEND:**
- 460.0 Channel Bottom Elevation
  - Channel Bottom Material
  - (4') Vertical Exposure on Concrete Seal Coat Face

**ILLINOIS  
DEPARTMENT OF TRANSPORTATION**

U.S. 24 OVER  
MISSISSIPPI RIVER  
STRUCTURE NUMBER: 001-0068  
SECTION (1-ZB-1)I-5  
ADAMS COUNTY

**PIER 12**