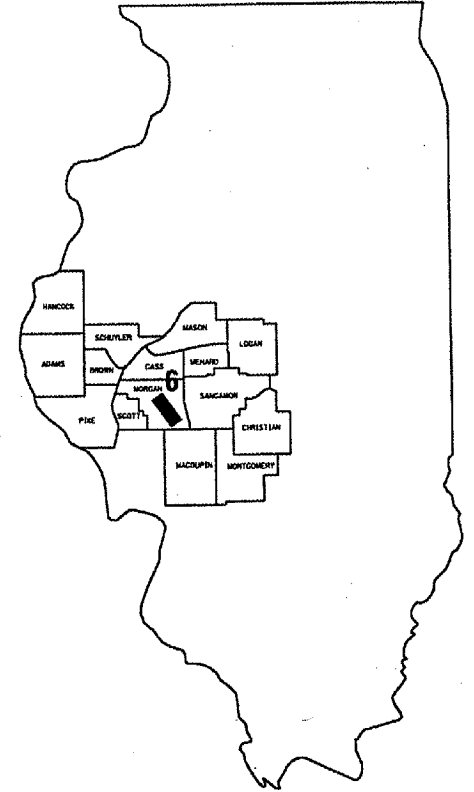


FOR INDEX OF SHEETS AND HIGHWAY
STANDARDS, SEE SHEET 2.

STATE OF ILLINOIS
DEPARTMENT OF TRANSPORTATION
DIVISION OF HIGHWAYS

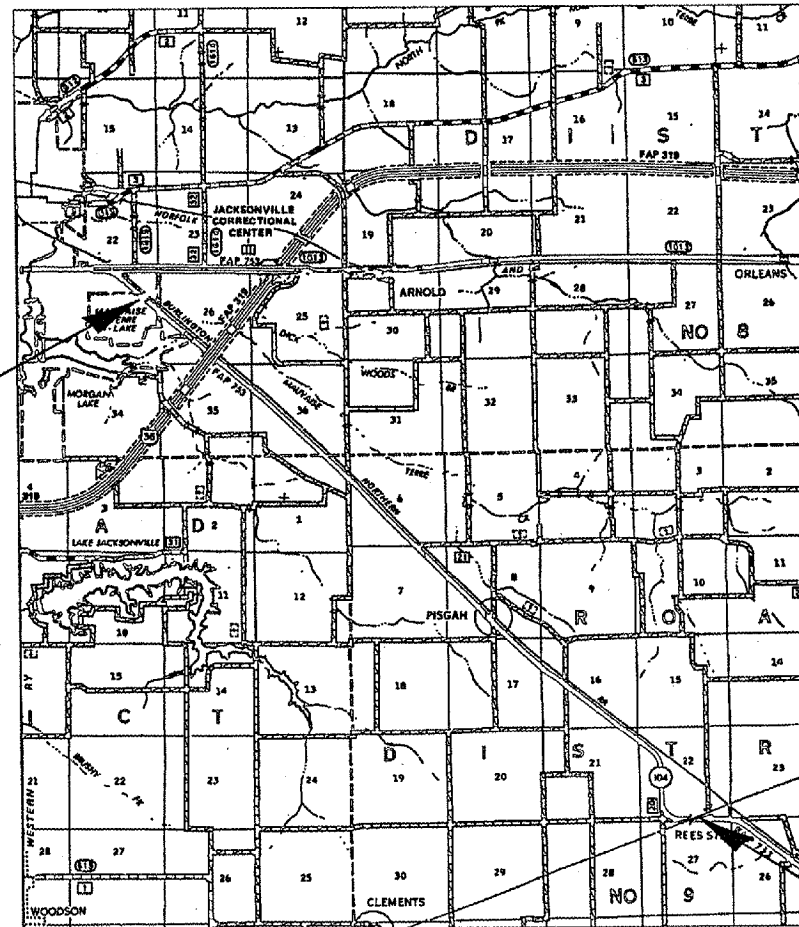
**PLANS FOR PROPOSED
CONTRACT MAINTENANCE**

FAP ROUTE 753 (IL 104)
SECTION (127B)I;(128X)RS-3
MORGAN COUNTY
C96-011-07 / D96-001-07



LOCATION OF SECTION INDICATED THUS: ■

R 9 W



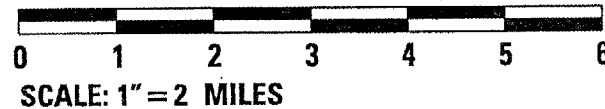
LOCATION #2
STA. 63+19

LOCATION #1
STA. 468+21

J. U. L. I. E.
JOINT UTILITY LOCATION INFORMATION FOR EXCAVATION
1-800-892-0123

PLANS & CONTRACT TECHNICIAN: TIMOTHY SHARP
PHONE: (217) 782-7743

NET LTH OF LOCATION #1 - 648.00FT = 0.123 MILE
NET LTH OF LOCATION #2 - 560FT = 0.106 MILE



STATE OF ILLINOIS
DEPARTMENT OF TRANSPORTATION
DIVISION OF HIGHWAYS

SUBMITTED Aug 23 20 06

Christ H Reed
DEPUTY DIRECTOR OF HIGHWAYS, REGION FOUR ENGINEER

October 13 20 06

Mike Hene
ENGINEER OF DESIGN AND ENVIRONMENT

October 13 20 06

Milton R. Sees P.E.
DIRECTOR, DIVISION OF HIGHWAYS

CONTRACT NO. 72A66

INDEX

1	COVER
2	INDEX/STANDARDS/SIGNATURES
3-4	QUANTITIES
5	TYPICAL SECTIONS
6-7	PLAN
8	SCHEDULES
9	PIPE HANDRAIL DETAILS
10-11	BUTT JOINT DETAILS

STANDARDS

- 701001-01
- 701006-02
- 701011-01
- 701201-02
- 701301-02
- 701306-01
- 701311-02
- 702001-06

NOTES:

NO PASSING ZONES TO BE FIELD VERIFIED BY THE BUREAU OF OPERATIONS.
THE RESIDENT ENGINEER SHALL NOTIFY THE BUREAU OF OPERATIONS 14 DAYS
PRIOR TO PERMANENT PAVEMENT MARKING.

STATE OF ILLINOIS DEPARTMENT OF TRANSPORTATION DIVISION OF HIGHWAYS DISTRICT 6	
EXAMINED	August 21 20 06 <i>Jonis J. Hoorn</i> ENGINEER OF OPERATIONS
EXAMINED	Aug 21 20 06 <i>W.R. Young</i> ENGINEER OF PROGRAM IMPLEMENTATION
EXAMINED	AUGUST 8 20 06 <i>William E. Motta</i> ENGINEER OF PROGRAM DEVELOPMENT

INDEX/STANDARDS/SIGNATURES
FAP 753 (IL 104)
SECTION (127B)I;(128)RS-3
MORGAN COUNTRY

S U M M A R Y O F Q U A N T I T I E S

CODE NO.	ITEM	UNIT	LOCATION #1	LOCATION #2	TOTAL QTY	
			100% STATE	100% STATE		
			I000	I000		
			QUANTITY	QUANTITY		
40600200	BITUMINOUS MATERIALS (PRIME COAT)	TON	0.7	0.2	0.9	
40600300	AGGREGATE (PRIME COAT)	TON	2.5	0.8	3.3	
40600990	TEMPORARY RAMP	SQ YD	64	58	122	
44000006	BITUMINOUS SURFACE REMOVAL 1 1/2"	SQ YD		578	578	
44000030	BITUMINOUS SURFACE REMOVAL (VARIABLE DEPTH)	SQ YD	1,771		1,771	
51000105	PIPE HANDRAIL	FOOT	160		160	
* 63000000	STEEL PLATE BEAM GUARDRAIL, TYPE A	FOOT	50	50	100	
* 63100167	TRAFFIC BARRIER TERMINAL, TYPE 1, (SPECIAL) TANGENT	EACH	4		4	
* 63100169	TRAFFIC BARRIER TERMINAL, TYPE 1, (SPECIAL) FLARED	EACH		4	4	
63200310	GUARDRAIL REMOVAL	FOOT	200	200	400	
67100100	MOBILIZATION	L SUM	0.5	0.5	1	
70100450	TRAFFIC CONTROL AND PROTECTION, STANDARD 701201	L SUM	0.5	0.5	1	
70100460	TRAFFIC CONTROL AND PROTECTION, STANDARD 701306	L SUM	0.5	0.5	1	

*SPECIALTY ITEMS

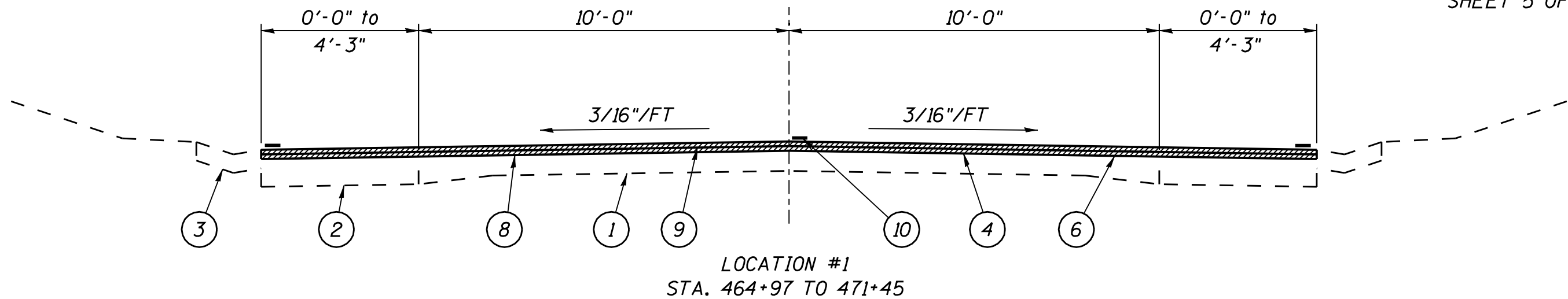
QUANTITIES
FAP 753 (IL 104)
SECTION (127B)I;(128)RS-3
MORGAN COUNTY

SUMMARY OF QUANTITIES

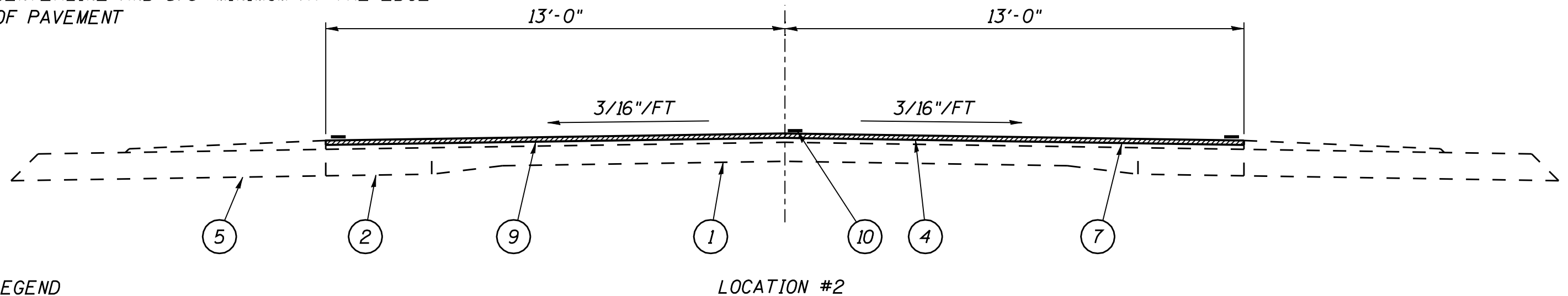
CODE NO.	ITEM	UNIT	LOCATION #1	LOCATION #2	TOTAL QTY
			100% STATE	100% STATE	
			I000 QUANTITY	I000 QUANTITY	
70300230	TEMPORARY PAVEMENT MARKING - LINE 5"	FOOT	1,842	256	2,098
* 78200410	GUARDRAIL MARKERS, TYPE A	EACH	4	4	8
* 78201000	TERMINAL MARKER DIRECT APPLIED	EACH	4	4	8
X4066414	BITUMINOUS CONCRETE SURFACE COURSE, SUPERPAVE, MIX C, N50	TON	149	49	198
X4066765	LEVELING BINDER (MACHINE METHOD), SUPERPAVE N50	TON	149		149

QUANTITIES
FAP 753 (IL 104)
SECTION (127B)I;(128)RS-3
MORGAN COUNTY

* SPECIALTY ITEMS



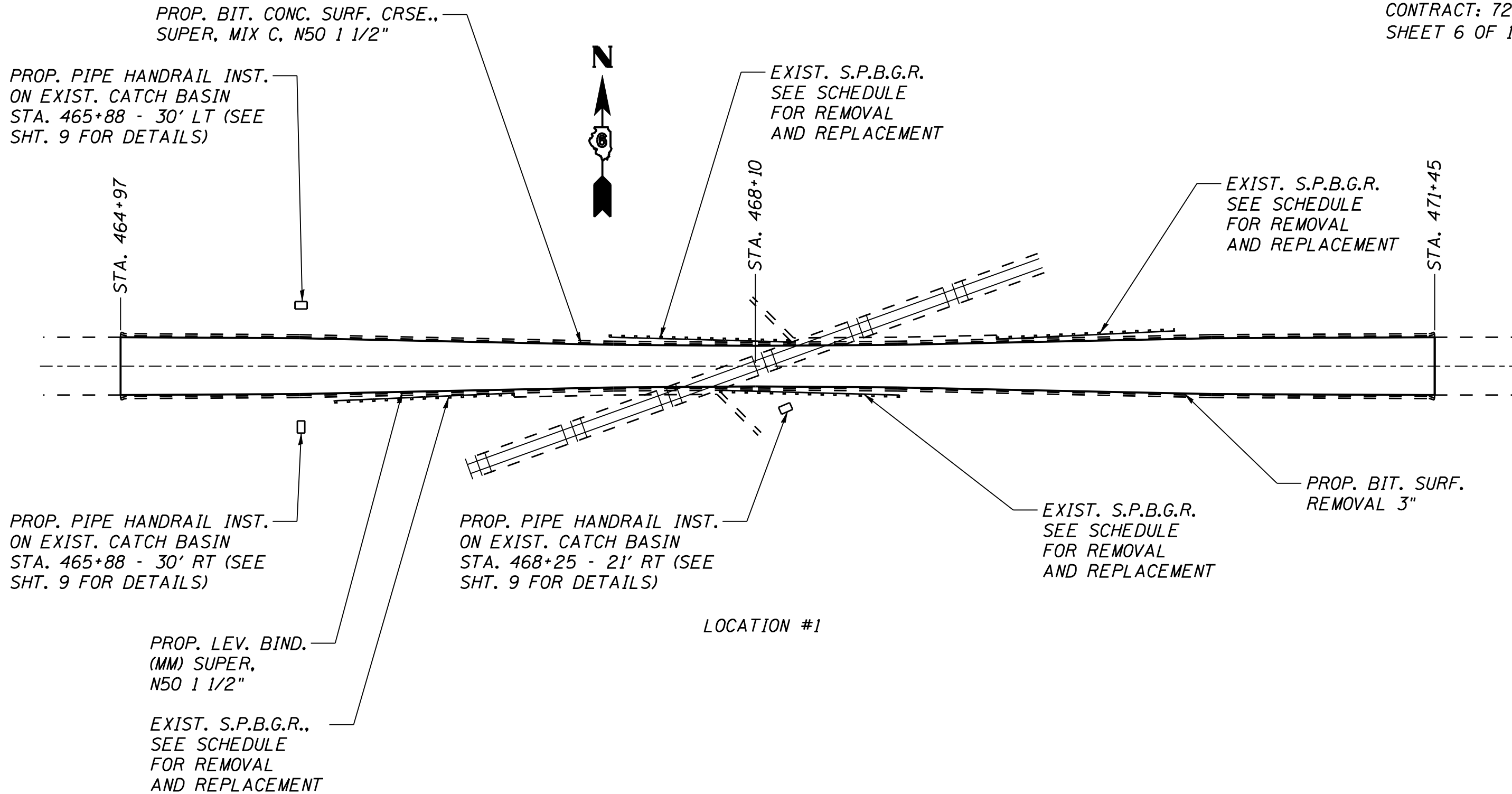
* THE ENTIRE EXIST. BITUMINOUS SURFACE IS TO BE REMOVED. THE PAVEMENT CROSS SLOPE SHALL BE CORRECTED TO 3/16"/' WITH LEVELING BINDER (MM), SUPER, N50 VARIABLE DEPTH WITH 1 1/2" MAXIMUM DEPTH AT THE CENTERLINE AND 5/8" MINIMUM AT THE EDGE OF PAVEMENT



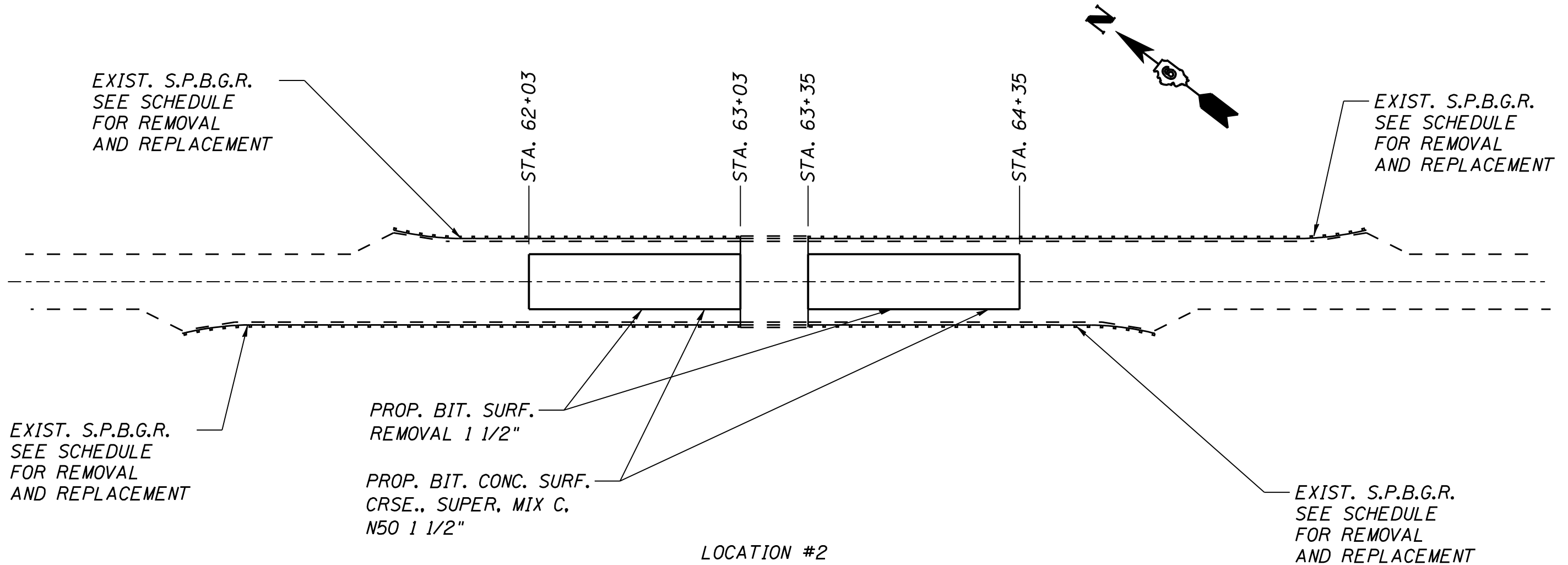
LEGEND

- 1 - EXIST. P.C.C. PAVEMENT 9-6 1/2-9
- 2 - EXIST. BITUMINOUS CONCRETE BASE COURSE WIDENING 9"
- 3 - EXIST. TYPE B GUTTER
- 4 - EXIST. BITUMINOUS SURFACE
- 5 - EXIST. BITUMINOUS SHOULDER
- 6 - PROP. BITUMINOUS SURFACE REMOVAL (VARIABLE DEPTH)*
- 7 - PROP. BITUMINOUS SURFACE REMOVAL 1 1/2"
- 8 - PROP. LEVELING BINDER (MACHINE METHOD) SUPERPAVE, N50 VARIABLE DEPTH*
- 9 - PROP. BITUMINOUS SURFACE COURSE, SUPERPAVE, N50 1 1/2"
- 10 - PROP. TEMPORARY PAVEMENT MARKING LINE 5"

TYPICALS
FAP 753 (IL 104)
SECTION (127B)I:(128)RS-3
MORGAN COUNTY



PLAN - LOCATION #1
FAP 753 (IL 104)
SECTION (127B)I;(128)RS-3
MORGAN COUNTY



PLAN - LOCATION #2
FAP 753 (IL 104)
SECTION (127B)I;(128)RS-3
MORGAN COUNTY

GUARDRAIL SCHEDULE

STATION	GUARDRAIL REMOVAL	S.P.B.G.R. TYPE A	TRAF. BARRIER TERM. TYPE I, (SPEC.) TANGENT	TRAF. BARRIER TERM. TYPE I, (SPEC.) FLARED
<i>LOCATION #1</i>				
466+02 TO 466+39.5 RT			1 EACH	
466+39.5 TO 466+52 RT		12.5 FT		
466+02 TO 466+52 RT	50 FT			
467+38 TO 467+75.5 LT			1 EACH	
467+75.5 TO 467+88 LT		12.5 FT		
467+38 TO 467+88 LT	50 FT			
468+31 TO 468+43.5 RT		12.5 FT		
468+43.5 TO 468+81 RT			1 EACH	
468+31 TO 468+81 RT	50 FT			
469+77 TO 469+89.5 LT		12.5 FT		
469+89.5 TO 470+27 LT			1 EACH	
469+77 TO 470+27 LT	50 FT			
<i>LOCATION #2</i>				
60+42 TO 60+79.5 RT				1 EACH
60+79.5 TO 60+92 RT		12.5 FT		
60+42 TO 60+92 RT	50 FT			
61+42 TO 61+79.5 LT				1 EACH
61+79.5 TO 61+92 LT		12.5 FT		
61+42 TO 61+92 LT	50 FT			
64+52 TO 64+64.5 RT		12.5 FT		
64+64.5 TO 65+02 RT				1 EACH
64+52 TO 65+02 RT	50 FT			
65+52 TO 65+64.5 LT		12.5 FT		
65+64.5 TO 66+02 LT				1 EACH
65+52 TO 66+02 LT	50 FT			
TOTAL	400 FT	100 FT	4 EACH	4 EACH

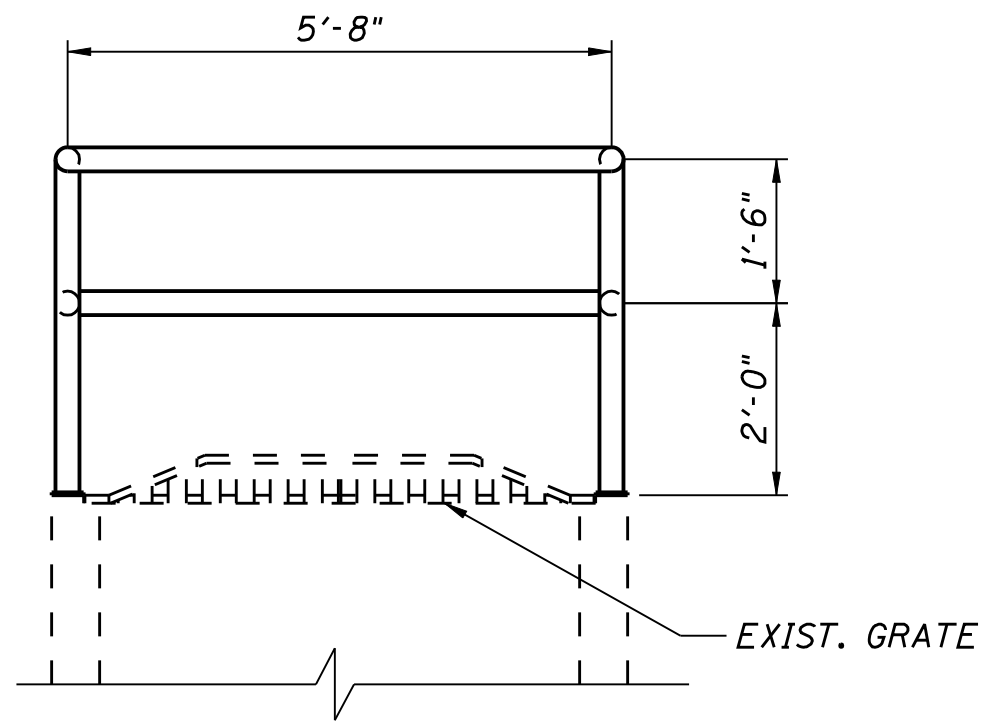
PAVEMENT MARKING SCHEDULE

STATION	TYPE	TEMP PVT MKG - LINE 5"	
		WHITE	YELLOW
<i>LOCATION #1</i>			
LT & RT 464+97 TO 471+45	EDGE LINE	1,296 FT	
LT 464+97 TO 468+81	NO PASS		384 FT
RT 464+97 TO 468+81	SKIP DASH		96 FT
468+81 TO 471+45	SKIP DASH		66 FT
<i>LOCATION #2</i>			
LT & RT 62+03 TO 63+03	EDGE LINE	100 FT	
LT & RT 63+35 TO 64+35	EDGE LINE	100 FT	
62+03 TO 63+03	SKIP DASH		28 FT
63+35 TO 64+35	SKIP DASH		28 FT
TOTALS		1,496 FT	602 FT

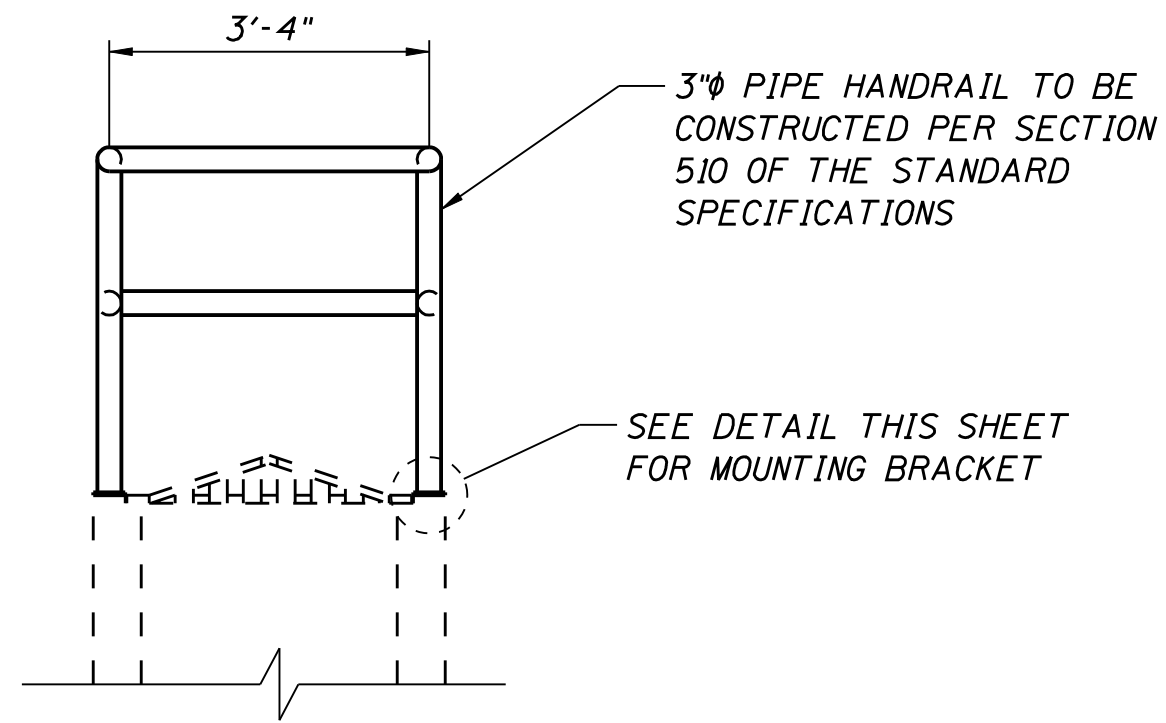
NOTES:

1. STATIONS ARE APPROXIMATE.

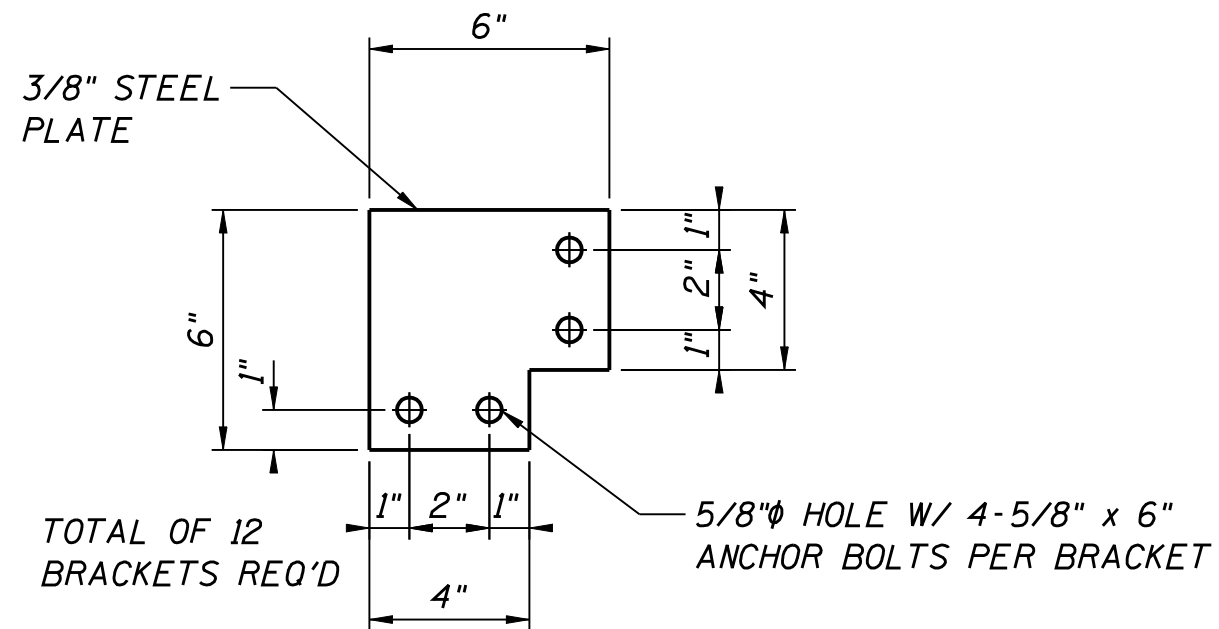
SCHEDULES
FAP 753 (IL 104)
SECTION (127B)I;(128)RS-3
MORGAN COUNTY



FRONT ELEVATION

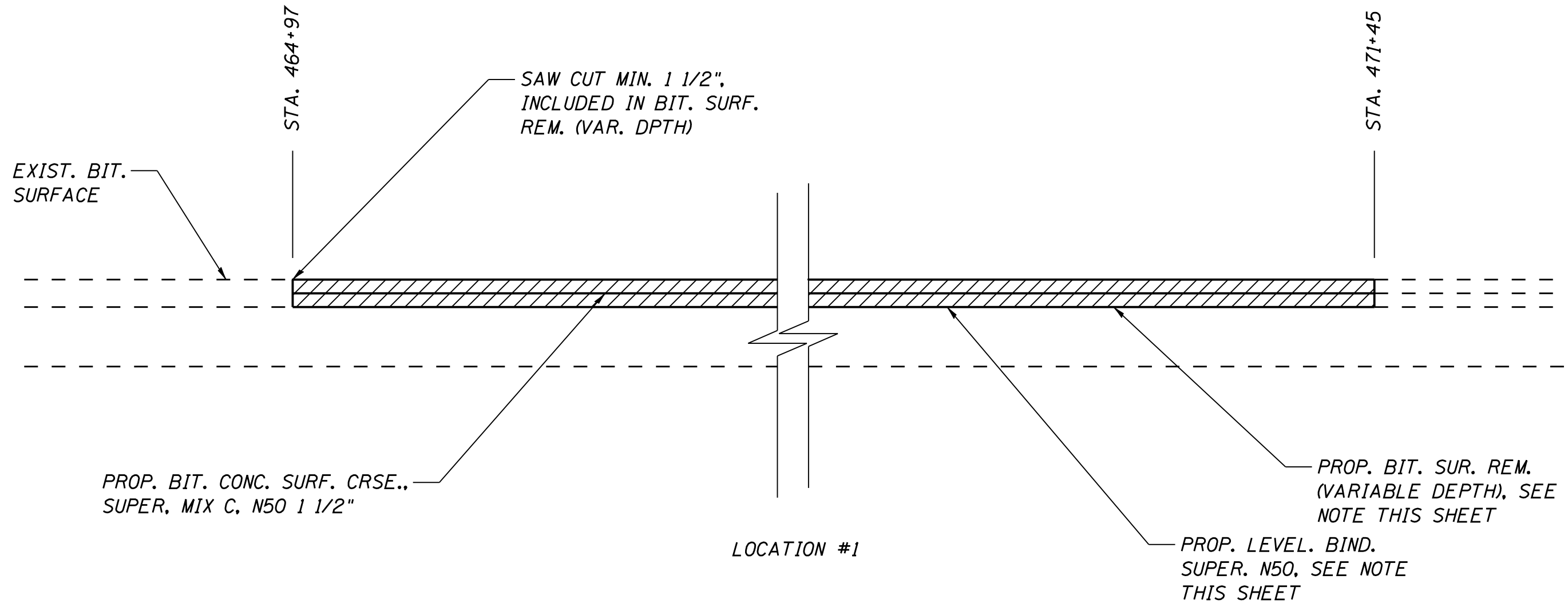


SIDE ELEVATION



MOUNTING BRACKET

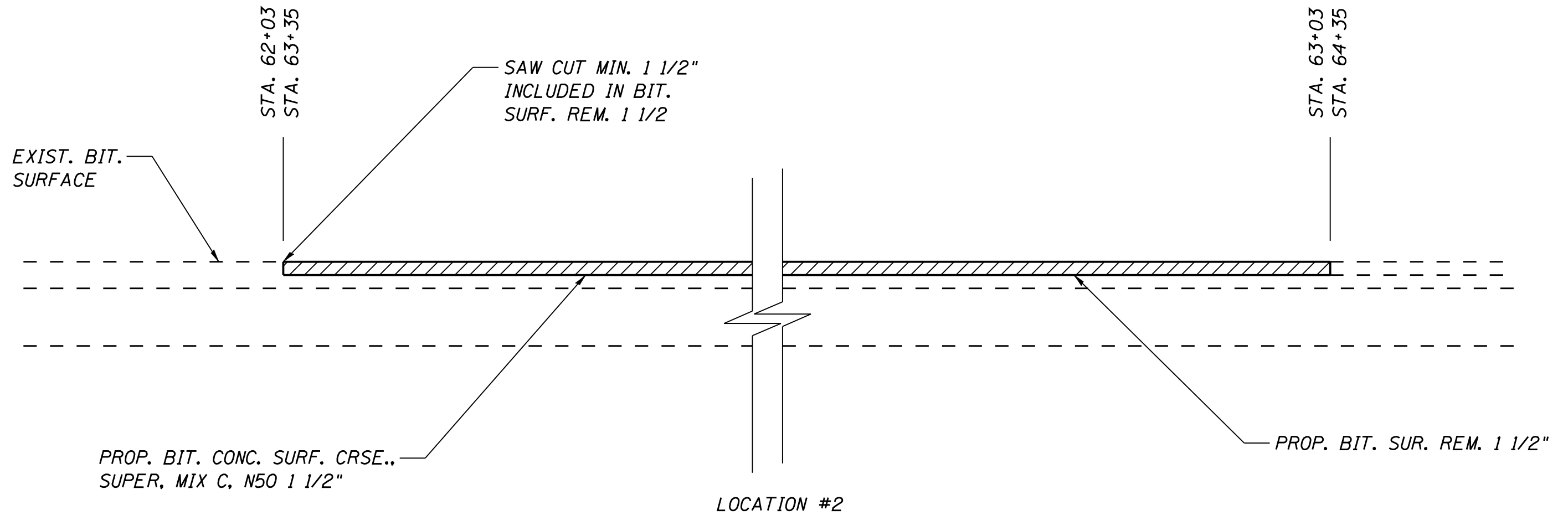
PIPE HANDRAIL DETAILS
FAP 753 (IL 104)
SECTION (127B)I:(128)RS-3
MORGAN COUNTY



NOTE:

THE ENTIRE EXIST. BITUMINOUS SURFACE IS TO BE REMOVED.
THE PAVEMENT CROSS SLOPE SHALL BE CORRECTED TO 3/16"/'
WITH LEVELING BINDER (MM), SUPER N50 (VARIABLE DEPTH)
1 1/2" MAXIMUM DEPTH AT THE CENTERLINE AND 5/8" MINIMUM
ST THE EDGE OF PAVEMENT

BUTT JOINT
FAP 753 (IL 104)
SECTION (127B)I;(128)RS-3
MORGAN COUNTY



BUTT JOINT
FAP 753 (IL 104)
SECTION (127B)I;(128)RS-3
MORGAN COUNTY