

F.A.P. RTE.	SECTION	COUNTY	TOTAL SHEETS	SHEET NO.
614		CASS	7	1

• (144 BR)I-3

STATE OF ILLINOIS
DEPARTMENT OF TRANSPORTATION
DIVISION OF HIGHWAYS
PROPOSED
HIGHWAY PLANS

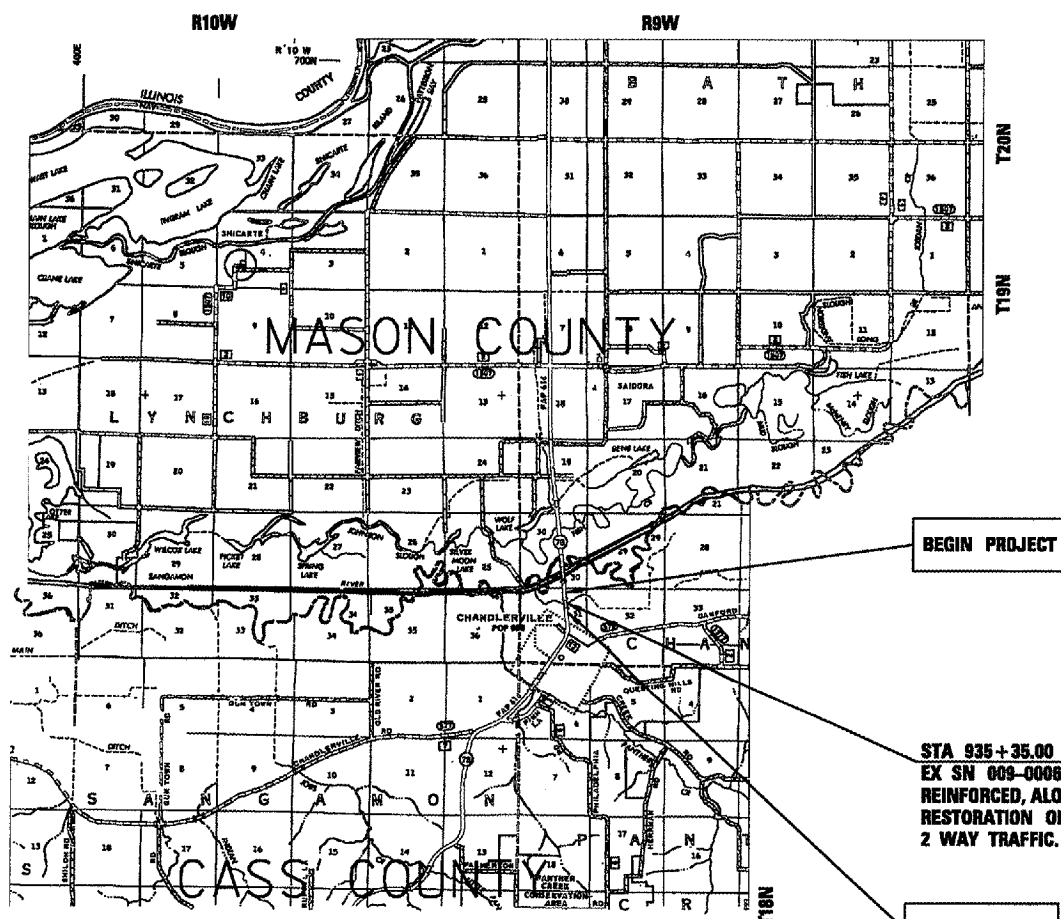
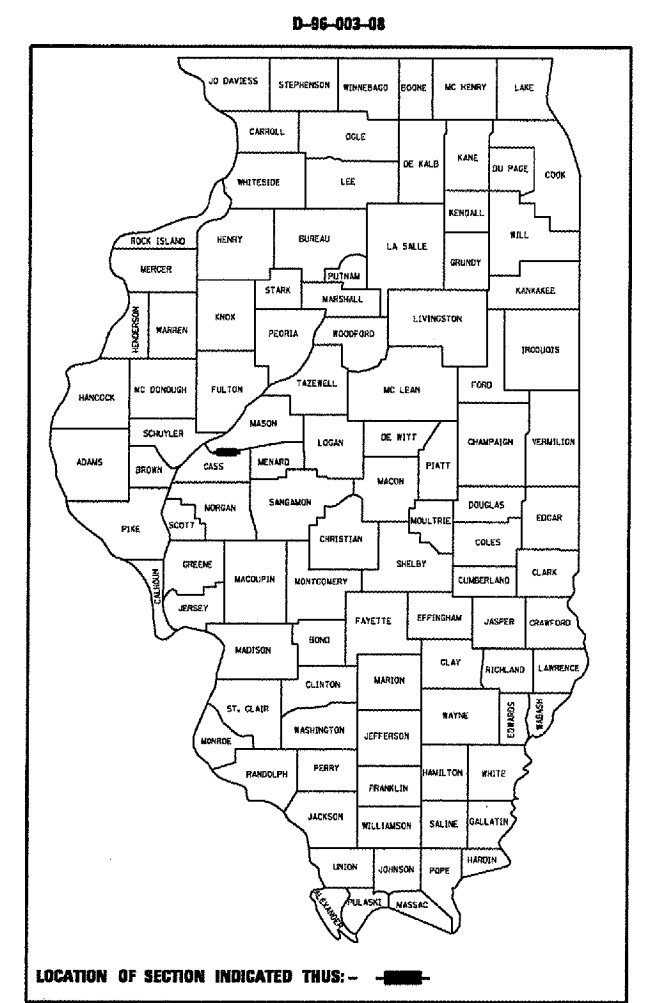
FAP ROUTE 614 (IL 78)
SECTION (144 BR)I-3
PROJECT
CASS COUNTY
C-96-003-08

INDEX OF SHEETS

SHT NO.	DESCRIPTION
1	COVER SHEET
2	GENERAL NOTES / SIGNATURES
3	SUMMARY OF QUANTITIES
4	EXISTING TRAFFIC CONTROL
5-7	STRUCTURE REPAIR PLANS

LIST OF STANDARDS

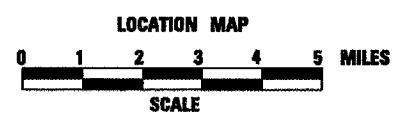
- 000001-04
- 001006
- 701001-01
- 701006-02
- 701011-01
- 701306-01
- 701311-02
- 702001-06
- 780001-01



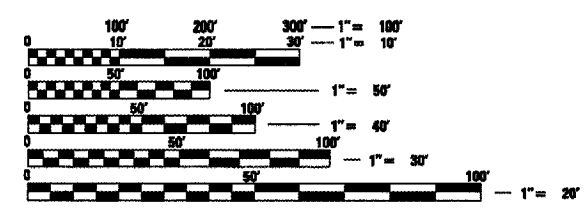
BEGIN PROJECT

STA 935+35.00
 EX SN 009-0006 TO BE REINFORCED, ALONG WITH RESTORATION OF 2 LANE, 2 WAY TRAFFIC.

END PROJECT



NET PROJECT LENGTH = 1,000.00 FEET = 0.19 MILES
 TOTAL PROJECT LENGTH = 1,000.00 FEET = 0.19 MILES



FULL SIZE PLANS HAVE BEEN PREPARED USING STANDARD ENGINEERING SCALES. REDUCED SIZED PLANS WILL NOT CONFORM TO STANDARD SCALES. IN MAKING MEASUREMENTS ON REDUCED PLANS, THE ABOVE SCALES MAY BE USED.

J.U.L.L.E.
 JOINT UTILITY LOCATION INFORMATION FOR EXCAVATION
 1-800-892-0123

STATE OF ILLINOIS
 DEPARTMENT OF TRANSPORTATION
 DIVISION OF HIGHWAYS

SUBMITTED Aug 13 2007
[Signature]
 DEPUTY DIRECTOR OF HIGHWAYS, REGION ENGINEER

October 12, 2007
[Signature]
 ENGINEER OF DESIGN AND ENVIRONMENT

October 12, 2007
[Signature]
 DIRECTOR OF HIGHWAYS, CHIEF ENGINEER

**PRINTED BY THE AUTHORITY
 OF THE STATE OF ILLINOIS**

PROJECT ENGINEER: JOHN NEGANGARD; (217) 782-6890
 SQUAD LEADER: VINCE MADONIA; (217) 785-9046

F.A.P. RTE.	SECTION	COUNTY	TOTAL SHEETS	SHEET NO.
614	(144 BR)1-3	CASS	7	2
STA.		TO STA.		
FED. ROAD DIST. NO. 6		ILLINOIS FED. AID PROJECT		

CONTRACT 72B47

GENERAL NOTES

1. ANY REFERENCE TO THE STANDARDS THROUGHOUT THE PLANS SHALL BE INTERPRETED TO BE THE LATEST STANDARDS OF THE DEPARTMENT AS INCLUDED IN THE PLANS.
2. NO EXCAVATION ANTICIPATED ON THIS PROJECT WHICH WOULD AFFECT UTILITIES. SHOULD ANY EXCAVATION BE REQUIRED, J.U.L.I.E. SHALL BE NOTIFIED A MINIMUM OF 48 HOURS IN ADVANCE - (800) 892-0123.
3. IN ADDITION TO FIELD SURVEYS AND AERIAL SURVEYS, PLAN DIMENSIONS AND DETAILS RELATIVE TO THE EXISTING FACILITIES HAVE BEEN TAKEN FROM EXISTING PLANS AND ARE SUBJECT TO CONSTRUCTION VARIATIONS. IT SHALL BE THE CONTRACTOR'S RESPONSIBILITY TO VERIFY SUCH DIMENSIONS AND DETAILS IN THE FIELD. SUCH VARIATIONS SHALL NOT BE A CAUSE FOR ADDITIONAL COMPENSATION DUE TO A CHANGE IN THE SCOPE OF THE WORK. HOWEVER, THE CONTRACTOR WILL BE PAID FOR THE QUANTITY ACTUALLY FURNISHED AT THE BID PRICE FOR THE WORK.
4. IDOT DISTRICT 6 BUREAU OF OPERATIONS IS TO BE NOTIFIED FIVE DAYS PRIOR TO REMOVAL OF EXISTING TRAFFIC CONTROL.

DISTRICT SIX	
EXAMINED <u>8/6</u>	20 <u>07</u>
<i>[Signature]</i>	
OPERATIONS ENGINEER	
EXAMINED <u>July 25</u>	20 <u>07</u>
<i>[Signature]</i>	
PROGRAM IMPLEMENTATION ENGINEER	
EXAMINED <u>July 25</u>	20 <u>07</u>
<i>[Signature]</i>	
PROGRAM DEVELOPMENT ENGINEER	

REVISIONS	
NAME	DATE

ILLINOIS DEPARTMENT OF TRANSPORTATION
GENERAL NOTES
 FAP ROUTE 614 (IL 78)
 SECTION (144 BR)1-3
 CASS COUNTY

SCALE: _____ DRAWN BY: _____
 DATE: _____ CHECKED BY: _____

F.A.P. RTE.	SECTION	COUNTY	TOTAL SHEETS	SHEET NO.
614	(144 BR) I-3	CASS	7	3
STA.		TO STA.		
FED. ROAD DIST. NO. 6		ILLINOIS	FED. AID PROJECT	

CONTRACT 72B47

SN 009-0006
100% STATE
SFTY-2A

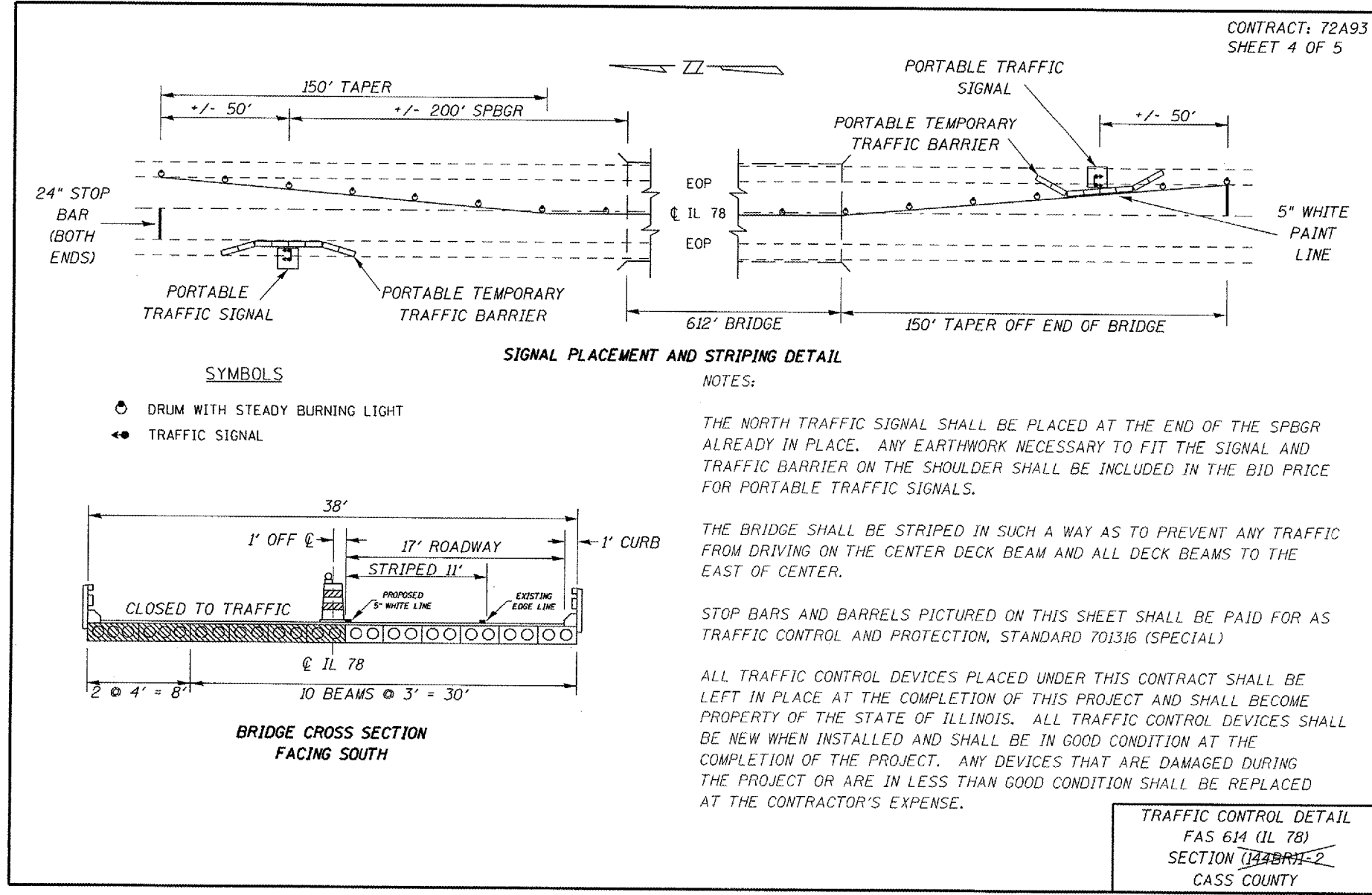
CODE NO.	DESCRIPTION	UNITS	TOTAL	QUANTITY
50500405	FURNISHING AND ERECTING STRUCTURAL STEEL	POUND	167,930	167,930
67100100	MOBILIZATION	L SUM	1	1
70100460	TRAFFIC CONTROL AND PROTECTION, STANDARD 701306	L SUM	1	1
* 78001120	PAINT PAVEMENT MARKING - LINE 5"	FOOT	305	305
78300500	PAINT PAVEMENT MARKING REMOVAL	SQ FT	422	422
84500120	REMOVAL OF ELECTRIC SERVICE INSTALLATION	EACH	2	2
X0325868	REMOVE EXISTING TRAFFIC CONTROL DEVICES	L SUM	1	1

** SPECIALTY ITEMS*

REVISIONS		ILLINOIS DEPARTMENT OF TRANSPORTATION SUMMARY OF QUANTITIES FAP ROUTE 614 (IL 78) SECTION (144 BR) I-3 CASS COUNTY
NAME	DATE	
SCALE:		DRAWN BY:
DATE:		CHECKED BY:

F.A.P. RTE.	SECTION	COUNTY	TOTAL SHEETS	SHEET NO.
614	(144 BR)I-3	CASS	7	4
STA.		TO STA.		
FED. ROAD DIST. NO. 6		ILLINOIS FED. AID PROJECT		

CONTRACT 72B47



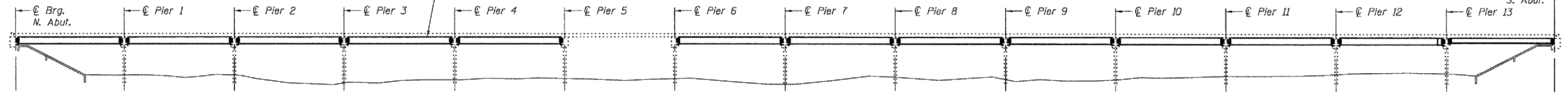
THE ATTACHED PLAN SHEET FROM CONTACT 72A93 SHOWS THE PROPOSED TRAFFIC CONTROL DEVICES THAT ARE TO BE REMOVED UPON COMPLETION OF THE BRACING. THESE PLANS ARE FOR INFORMATION ONLY, AND IT IS UP TO THE CONTRACTOR TO VERIFY THE ACTUAL QUANTITY IN PLACE. NO ADJUSTMENTS WILL BE MADE, AND THE COST TO REMOVE THE DEVICES AND TRANSPORT THEM TO THE IDOT SPRINGFIELD YARD WILL BE PAID FOR AT THE CONTRACT UNIT PRICE OF LUMP SUM AS 'REMOVE EXISTING TRAFFIC CONTROL DEVICES'

REVISIONS		ILLINOIS DEPARTMENT OF TRANSPORTATION EXISTING TRAFFIC CONTROL FAP ROUTE 614 (IL 78) SECTION (144 BR)I-3 CASS COUNTY
NAME	DATE	
SCALE:		DRAWN BY:
DATE:		CHECKED BY:

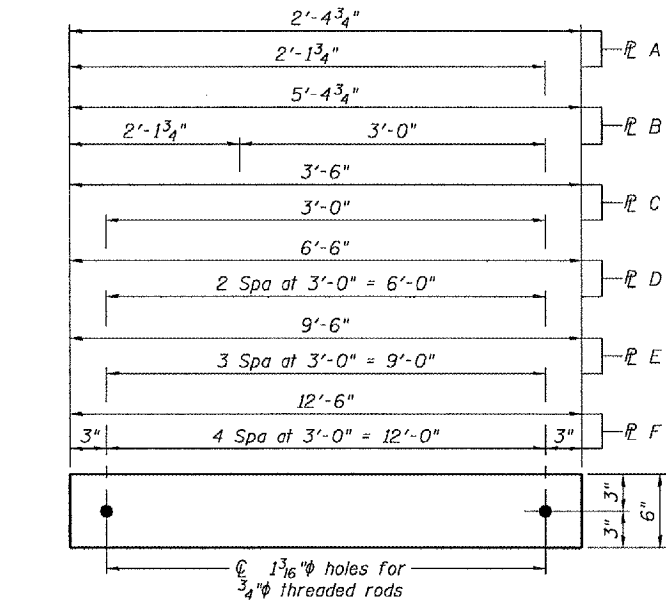
*Contractor is to verify beam length prior to ordering material. Other sections meeting the section modulus requirements shown may be allowed subject to approval by the Bureau of Bridges and Structures. Maximum Girder depth = 36". No additional payment will be allowed if the contractor chooses a heavier steel section than the ones specified in the plans.

STATE OF ILLINOIS
DEPARTMENT OF TRANSPORTATION

ROUTE NO.	SECTION	COUNTY	TOTAL SHEETS	SHEET NO.
		CASS	7	5
FED. ROAD DIST. NO. 7		ILLINOIS FED. AID PROJECT-		SHEET NO. 1
Contract Number: 72D47				3 SHEETS



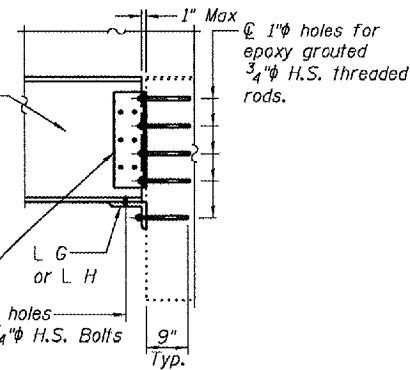
ELEVATION



TRANSVERSE TIE R'S

- R A 1/2" x 2'-4 3/4" x 6" (9 Req'd)
- R B 1/2" x 5'-4 3/4" x 6" (3 Req'd)
- R C 1/2" x 3'-6" x 6" (27 Req'd)
- R D 1/2" x 6'-6" x 6" (6 Req'd)
- R E 1/2" x 9'-6" x 6" (9 Req'd)
- R F 1/2" x 12'-6" x 6" (3 Req'd)

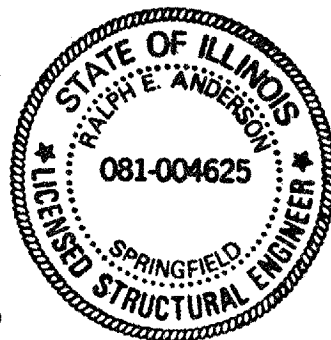
W Section see elevation for exact size. Place tight against concrete beam.



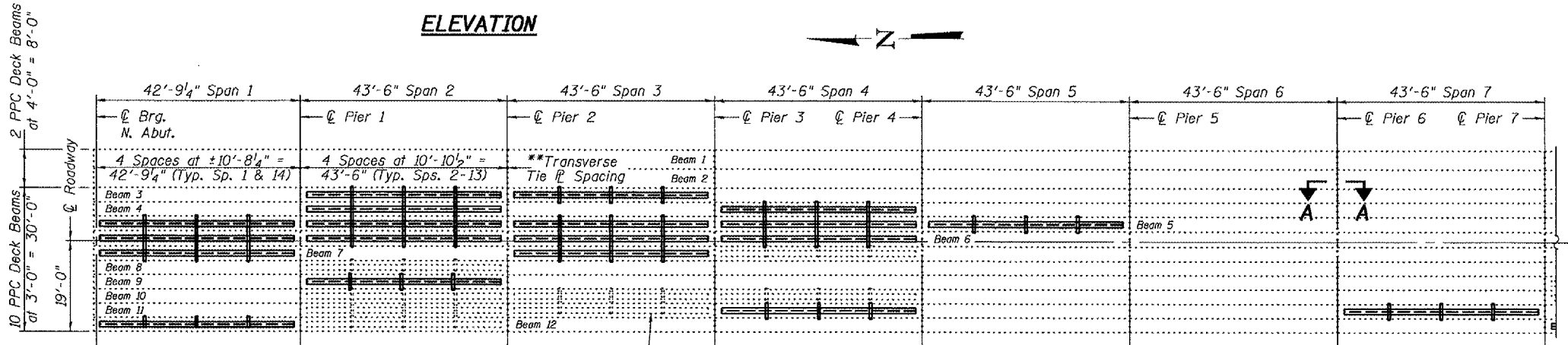
SECTION A-A
TYPICAL CONNECTION DETAIL

DESIGNED	Alvin J. Holloway
CHECKED	SJB
DRAWN	[Signature]
CHECKED	AT4 SJB

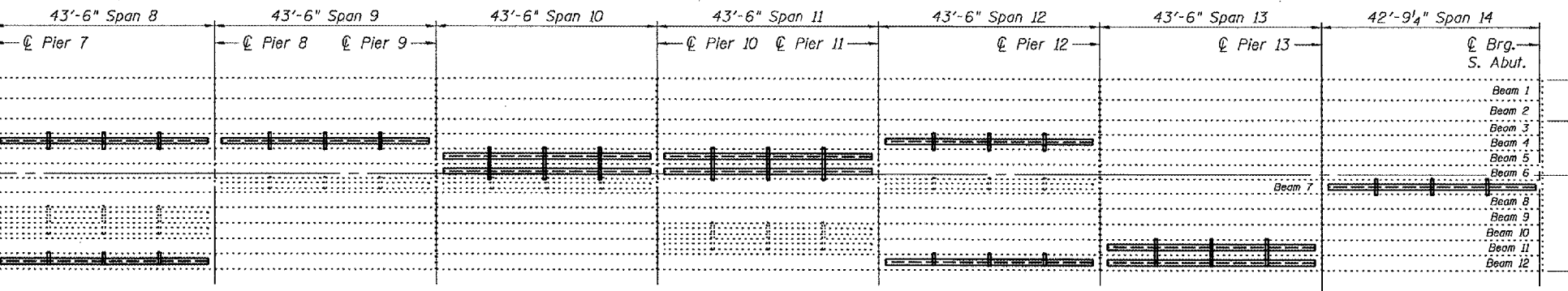
EXAMINED	August 30, 2007
PASSED	[Signature]



Expires: November 30, 2008



PLAN



PLAN

GENERAL NOTES

All structural steel shall conform to AASHTO Classification M-270 Gr. 36, unless otherwise noted.
Plan dimensions and details relative to existing plans are subject to routine variations. The Contractor shall field verify existing dimensions and details affecting new construction and make necessary approved adjustments prior to construction or ordering of materials. Such variations shall not be cause for additional compensation for a change in scope of the work, however, the Contractor will be paid for the quantity actually furnished based upon the unit price bid for the work.
See Section 584 of the Standard Specifications for Epoxy Grouting of Threaded Rods.
The cost of epoxy grouting threaded rods shall be included with Furnishing and Erecting Structural Steel.
Temporary concrete barrier shall be placed along beam line 3, see Roadway Plans for details.

The contractor is advised that the existing PPC Deck Beams are in a deteriorated condition with reduced load carrying capacity. It is the contractor's responsibility to account for the condition of the beams when developing construction procedures.
If the contractor's procedure for placement of beams involves placement of cranes or other heavy equipment on the bridge, a detailed procedure shall be submitted to the Engineer for approval. The procedure shall include calculations, prepared and sealed by an Illinois Licensed Structural Engineer, verifying that the equipment and procedure used will not overstress the existing beams. To distribute load to multiple beams and protect the existing surface, in all cases a double layer mat of heavy timbers shall be used at all times under crane tracks or wheels and any outriggers in the down position. If necessary, shims shall be used under the crane mat to ensure uniform contact with the underlying beams.
The Contractor has the option of using used steel. See Special Provisions.

TOTAL BILL OF MATERIAL

ITEM	UNIT	QUANTITY
Furnishing and Erecting Structural Steel	Pound	167,930

PLAN AND ELEVATION

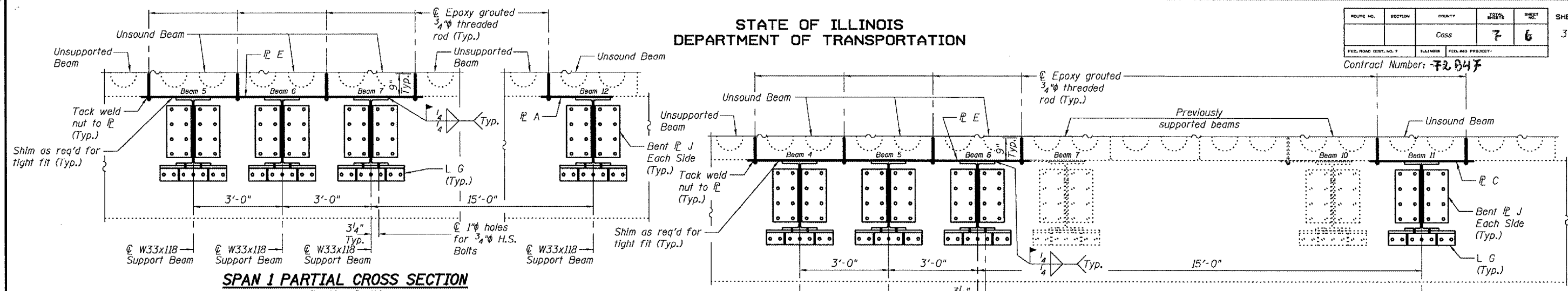
F.A.P. RT.614
CASS COUNTY
SN 009-0006

STATE OF ILLINOIS
DEPARTMENT OF TRANSPORTATION

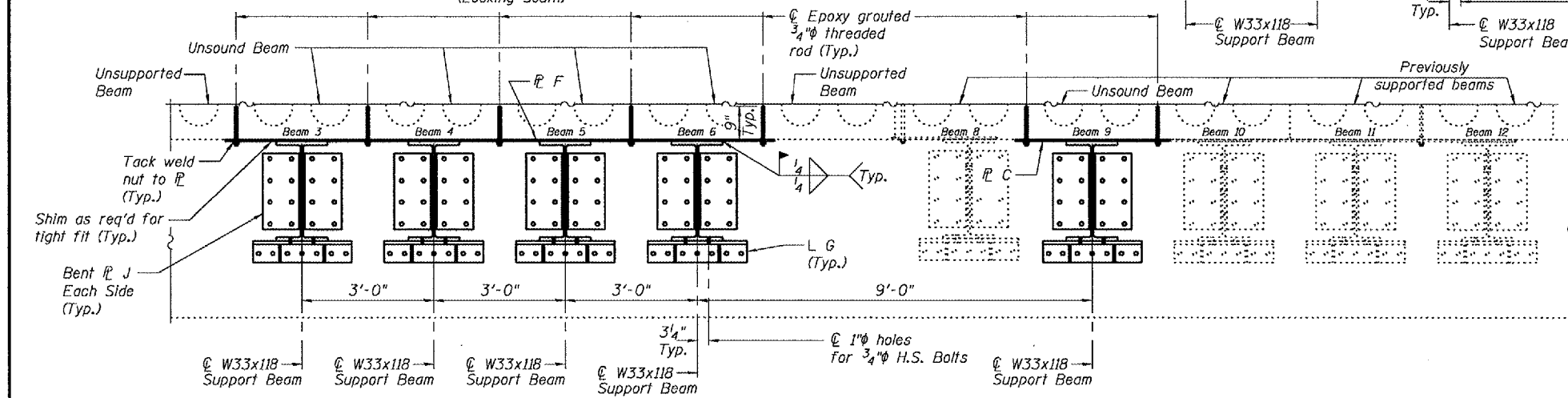
ROUTE NO.	SECTION	COUNTY	TOTAL SHEETS	SHEET NO.
		Cass	7	6
FED. ROAD DIST. NO. 7 ILLINOIS FED. AID PROJECT-				

SHEET NO. 2
3 SHEETS

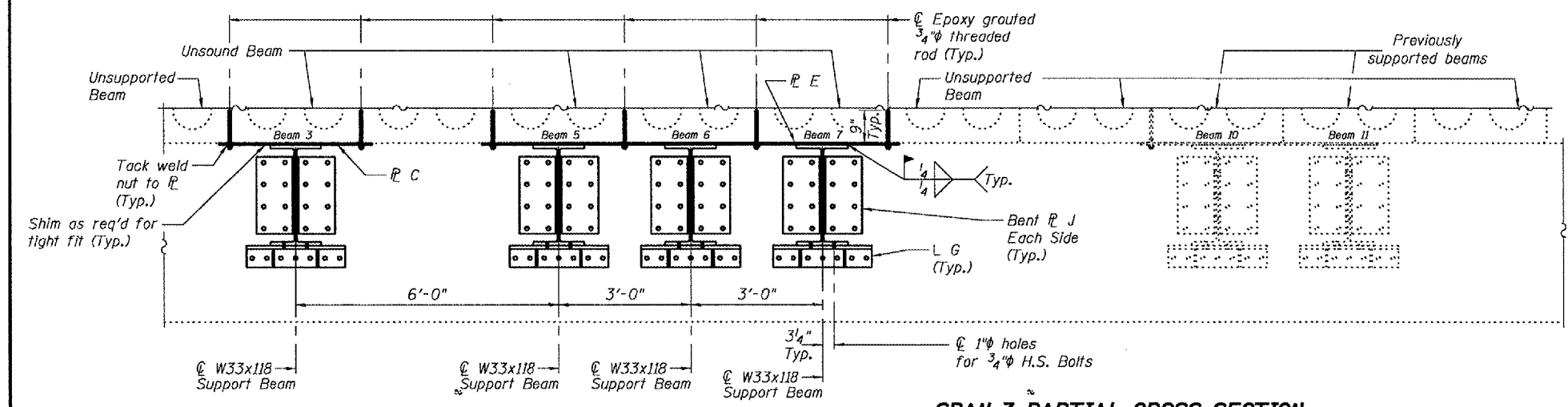
Contract Number: **72 B47**



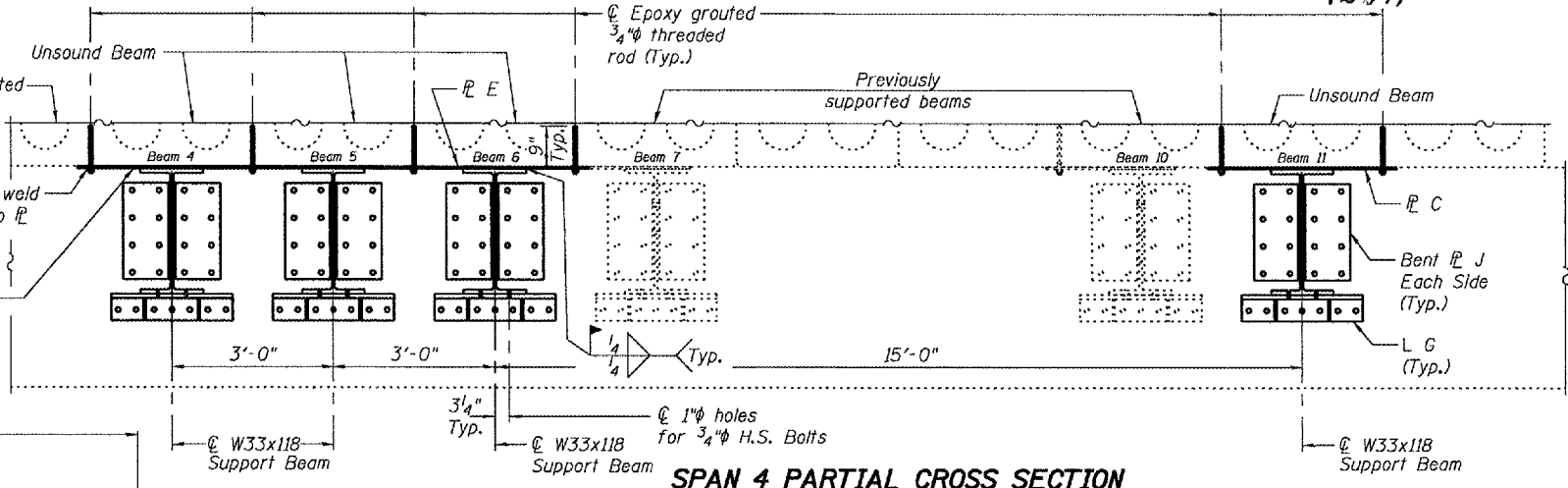
SPAN 1 PARTIAL CROSS SECTION
(Looking South)



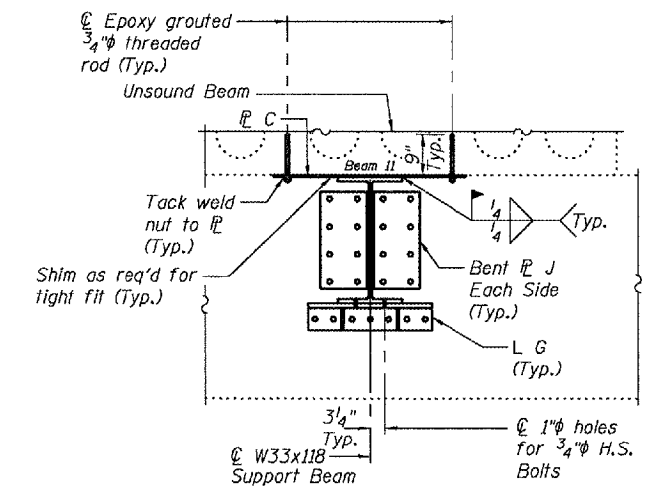
SPAN 2 PARTIAL CROSS SECTION
(Looking South)



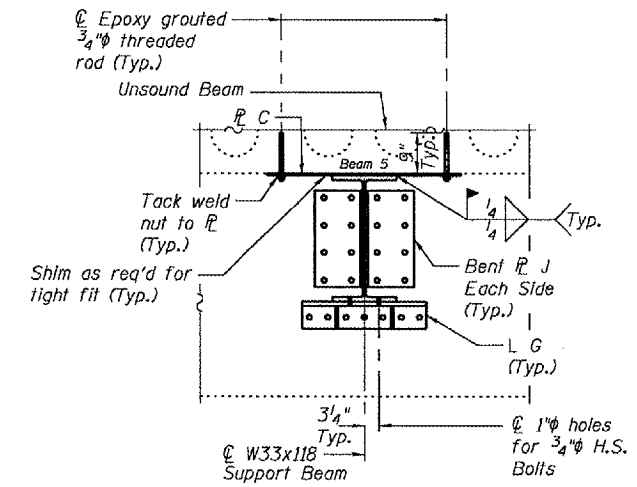
SPAN 3 PARTIAL CROSS SECTION
(Looking South)



SPAN 4 PARTIAL CROSS SECTION
(Looking South)



SPAN 7 PARTIAL CROSS SECTION
(Looking South)



SPAN 5 PARTIAL CROSS SECTION
(Looking South)

DECK CROSS SECTIONS
F.A.P. RT.614
CASS COUNTY
SN 009-006

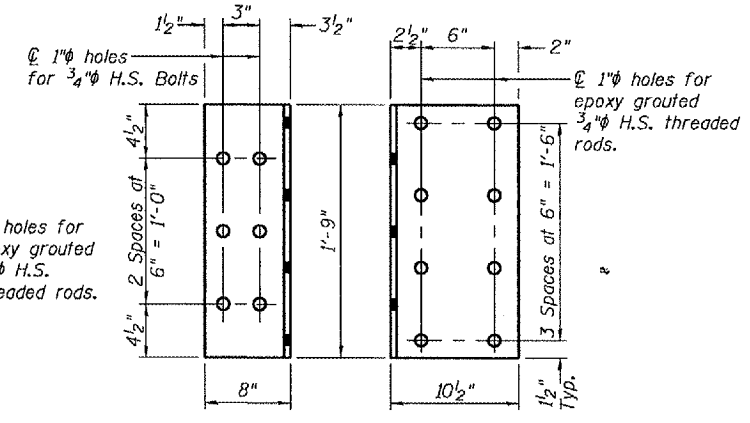
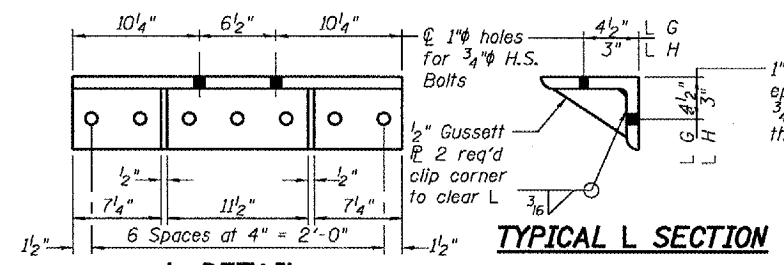
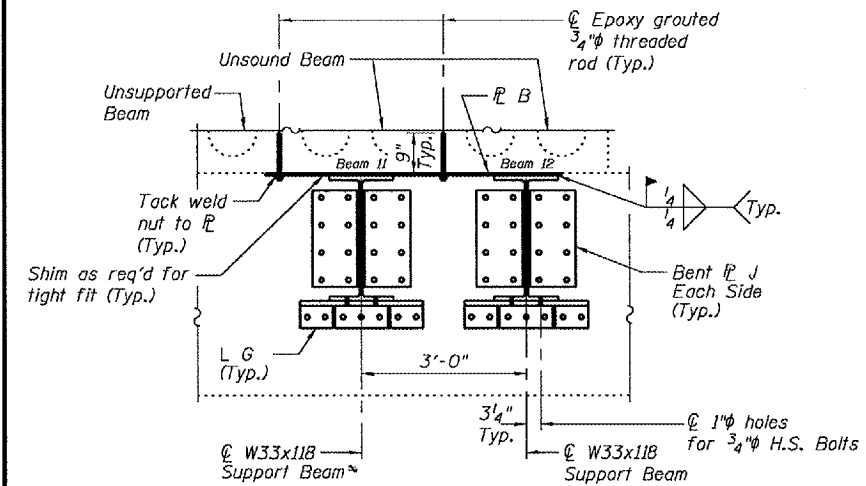
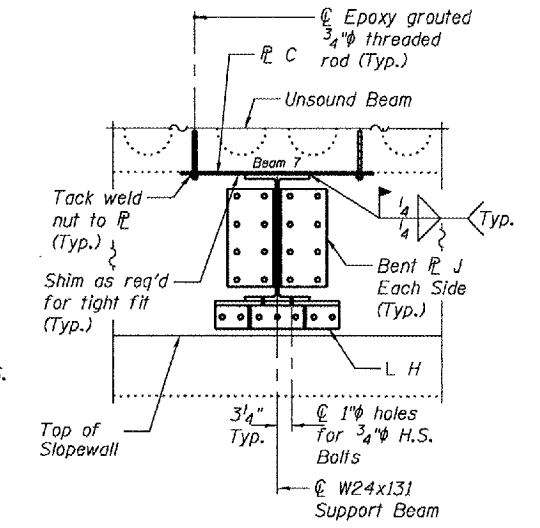
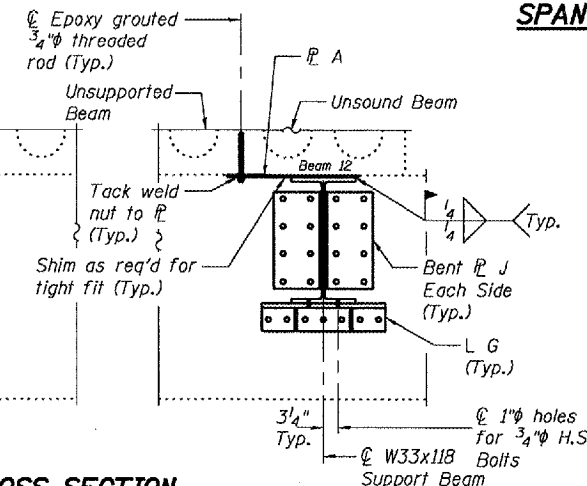
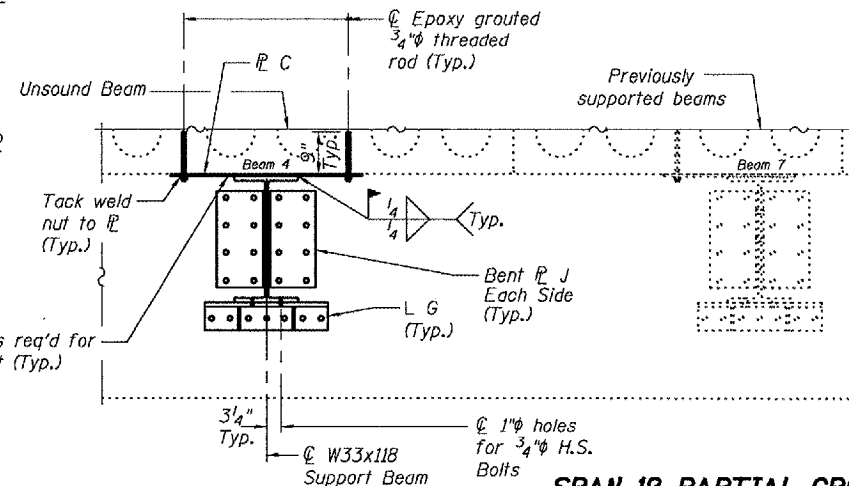
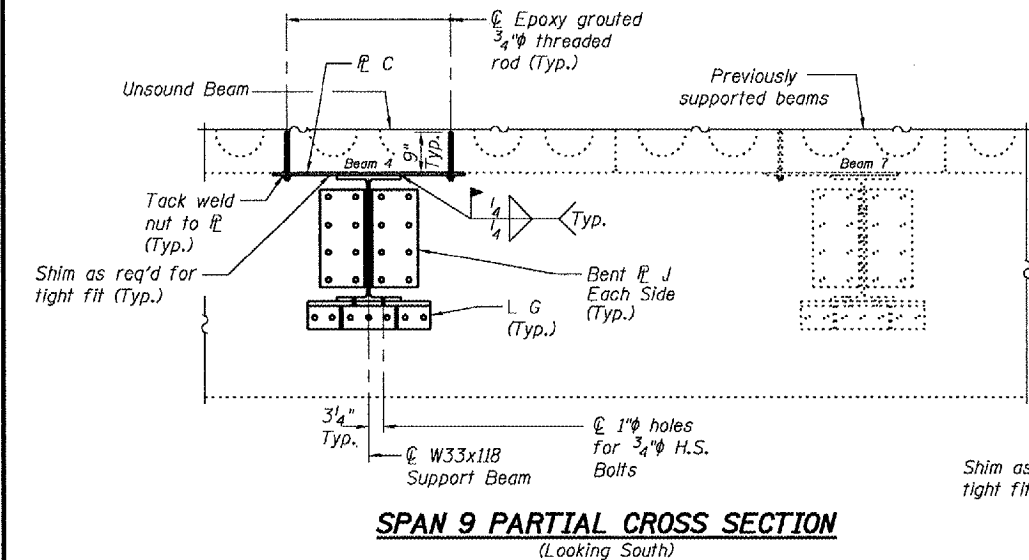
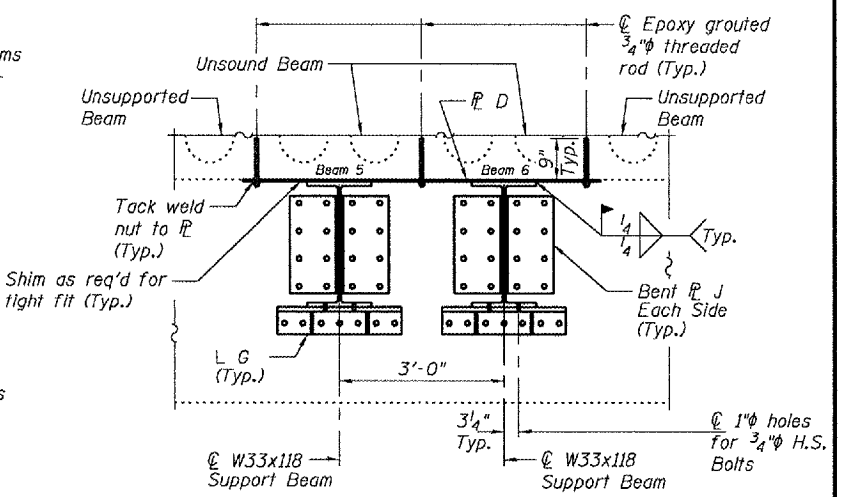
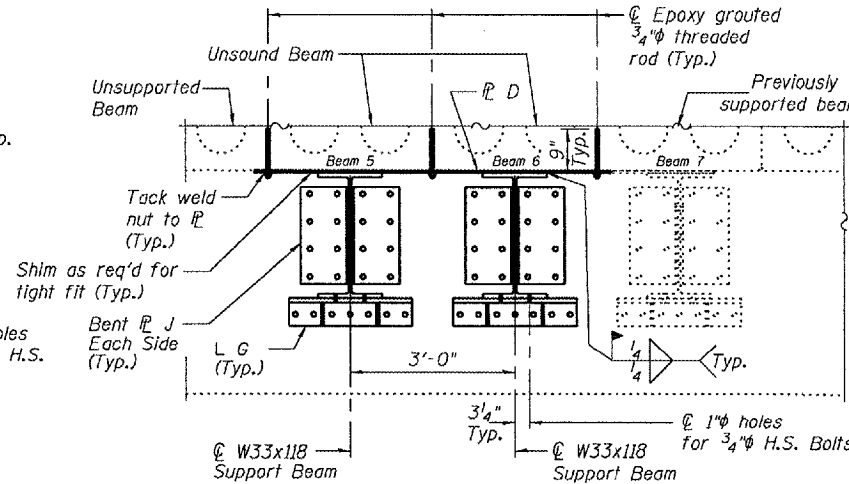
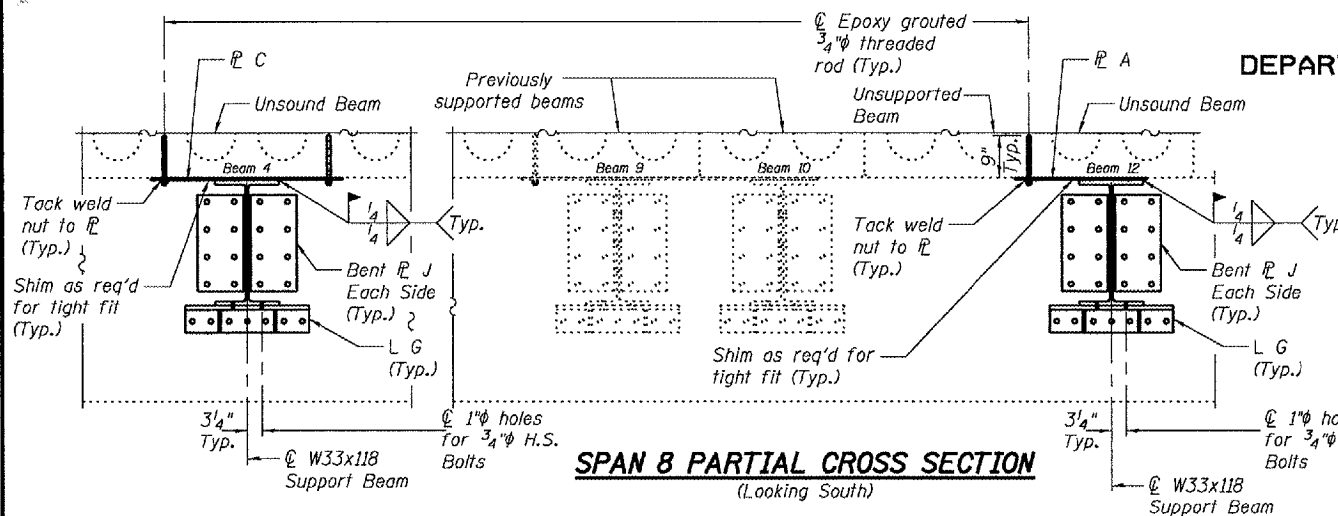
DESIGNED	A.T.H.
CHECKED	S.J.B.
DRAWN	Drew Christopher
CHECKED	A.T.H. S.J.B.

August 30, 2007
EXAMINED *Carl Perry*
PASSED *Ralph E. Anderson*
ENGINEER OF BRIDGES AND STRUCTURES

STATE OF ILLINOIS
DEPARTMENT OF TRANSPORTATION

PROJECT NO.	SECTION	COUNTY	TOTAL SHEETS	SHEET	SHEET NO. 3 3 SHEETS
		Cass	7	7	
FED. ROAD DIST. NO. 7		ILLINOIS	FED. AID PROJECT		

Contract Number: **72047**



DESIGNED	A.T.H.
CHECKED	S.J.B.
DRAWN	Drew Christopher
CHECKED	A.T.H. S.J.B.

August 30, 2007
EXAMINED *Carl P. ...*
PASSED *Ralph E. Anderson*
ENGINEER OF BRIDGES AND STRUCTURES

L G 8x8x³/₄ x 2'-3" (61 Req'd)
L H 5x5x⁷/₈ x 2'-3" (1 Req'd)

Bent P J
P 1/2" x 1'-6 1/2" x 1'-9"
(124 Req'd)

DECK CROSS SECTIONS
F.A.P. RT.614
CASS COUNTY
SN 009-0006