

FAP ROUTE	SECTION	COUNTY	TOTAL SHEETS	SHEET NO.
805	122-VBR-1	ST. CLAIR	58	1

+3  
= 61

D-98-017-02

STATE OF ILLINOIS  
DEPARTMENT OF TRANSPORTATION

DIVISION OF HIGHWAYS

PROPOSED

HIGHWAY PLANS

FAP ROUTE 805 {IL ROUTE 161}

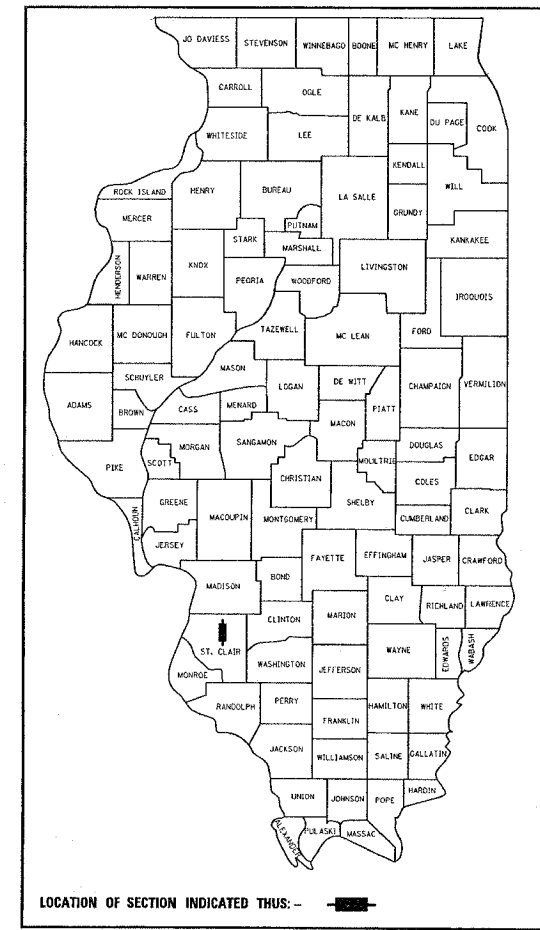
SECTION 122 VBR-1

PROJECT: F-0805(069)

DECK REPLACEMENT OF STRUCTURE CARRYING IL ROUTE 161 OVER  
THE METRO-LINK STATION & EB LEFT TURN LANE EXTENSION

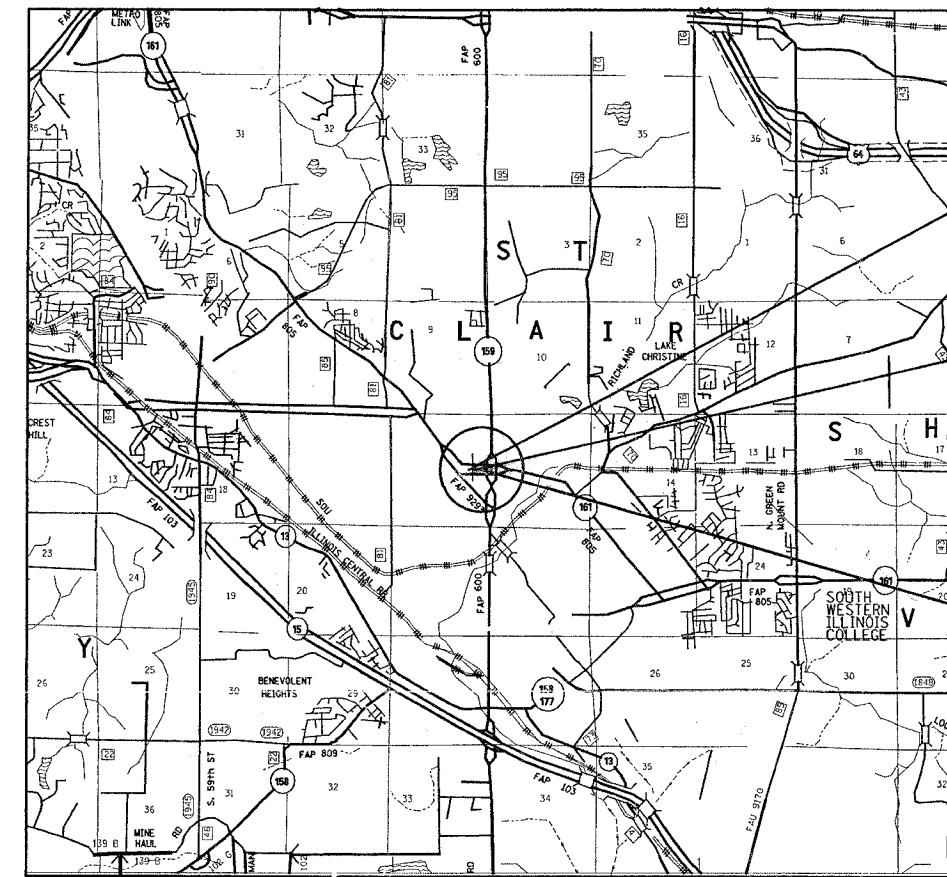
ST. CLAIR COUNTY

C-98-020-02



SEE SHEET 2 FOR INDEX OF SHEETS  
LIST OF STANDARDS AND GENERAL NOTES

RTW

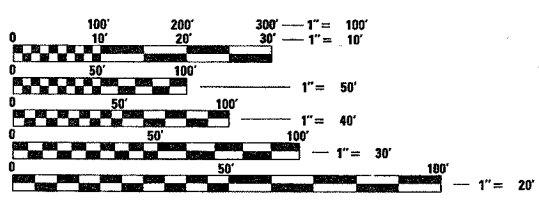


BEGIN CONSTRUCTION  
STA. 67+75.00

BRIDGE STATIONING-  
STA. 69+04.50 TO STA. 70+89.08  
S.N. 082-0091

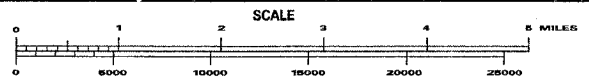
END CONSTRUCTION  
STA. 72+00.00

MICROFILMED \_\_\_\_\_  
REEL NUMBER \_\_\_\_\_  
AWARDED \_\_\_\_\_  
RESIDENT ENGINEER \_\_\_\_\_  
AS BUILT CHANGES WERE MADE  
ON THE FOLLOWING SHEETS \_\_\_\_\_



FULL SIZE PLANS HAVE BEEN PREPARED USING STANDARD  
ENGINEERING SCALES. REDUCED SIZED PLANS WILL NOT  
CONFORM TO STANDARD SCALES. IN MAKING MEASUREMENTS  
ON REDUCED PLANS, THE ABOVE SCALES MAY BE USED.

J.U.L.I.E.  
JOINT UTILITY LOCATION INFORMATION FOR EXCAVATION  
1-800-892-0123



GROSS LENGTH = .03 MILES (185.6 FT)  
NET LENGTH = .03 MILES (185.6 FT)  
LATITUDE = 38.53842  
LONGITUDE = 89.98629

PROJECT ENGINEER: PATTI LEBEAU(618) 346-3179  
SQUAD CONTACT: ART MUEHLFELD (618) 346-3209

CONTRACT NO. 76558

STATE OF ILLINOIS  
DEPARTMENT OF TRANSPORTATION  
DIVISION OF HIGHWAYS

SUBMITTED August 24, 2006  
*May Cotamini*  
DEPUTY DIRECTOR OF HIGHWAYS  
REGION FIVE ENGINEER

October 13, 2006  
*Mike Hine*  
ENGINEER OF DESIGN AND ENVIRONMENT

October 13, 2006  
*Milton R. Sees, P.E.*  
DIRECTOR, DIVISION OF HIGHWAYS

PRINTED BY THE AUTHORITY  
OF THE STATE OF ILLINOIS