

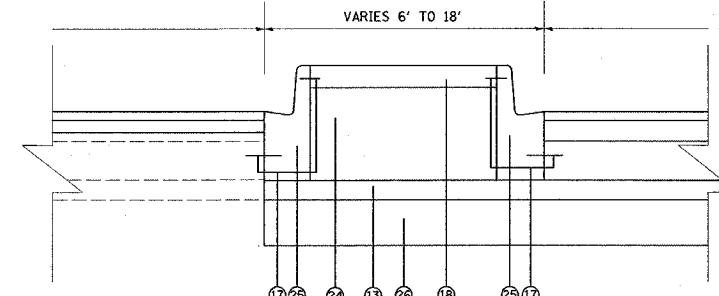
F.A.P. RTE.	SECTION	COUNTY	TOTAL SHEETS	SHEET NO.
805	122-VBR-I	ST. CLAIR	58	5
STA.		TO STA.		
FED. ROAD DIST. NO.		ILLINOIS FED. AID PROJECT		

LEGEND

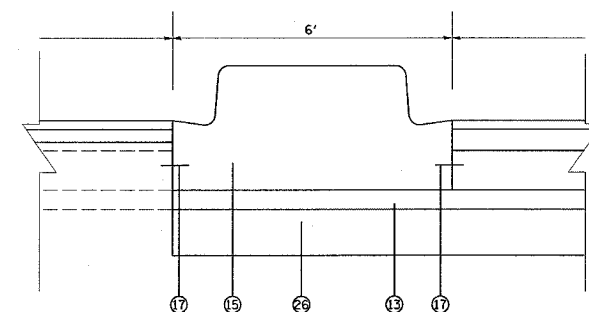
- ① EXISTING COMBINATION CONCRETE CURB AND GUTTER, TYPE B-6.24
- ② EXISTING PCC PAVEMENT - VARIES 8" TO 10"
- ③ EXISTING SUB-BASE GRANULAR MATERIAL, TYPE A - 4"
- ④ EXISTING BITUMINOUS CONCRETE SURFACE COURSE - 1 1/2"
- ⑤ EXISTING COMBINATION CONCRETE CURB AND GUTTER, TYPE M-6.12/B6.12
- ⑥ EXISTING COMPACT SAND - 4"
- ⑦ EXISTING CONCRETE MEDIAN SURFACE - 4"
- ⑧ EXISTING SIDEWALK - 4"
- ⑨ EXISTING BITUMINOUS CONCRETE BINDER COURSE - VARIES 1" TO 3 1/2"
- ⑩ EXISTING PCC BASE COURSE - 8"
- ⑪ EXISTING PAVEMENT FABRIC
- ⑫ PROPOSED PCC BASE COURSE - 8"
- ⑬ PROPOSED SUB-BASE GRANULAR MATERIAL TYPE A - 4"
- ⑭ PROPOSED POLYMERIZE BITUMINOUS CONCRETE SURFACE COURSE, SUPERPAVE, MIX "E", N90 - 1 1/2"
- ⑮ PROPOSED CONCRETE MEDIAN SB-6.12*
- ⑯ PROPOSED BITUMINOUS CONCRETE BINDER COURSE, SUPERPAVE, IL-19.0, N90 - VARIES 1" TO 3 3/4"
- ⑰ PROPOSED TIE BARS
- ⑱ PROPOSED CONCRETE MEDIAN SURFACE - 4"***
- ⑲ PROPOSED CONCRETE SIDEWALK - 4"
- ⑳ PROPOSED COMBINATION CONCRETE CURB AND GUTTER, TYPE B-6.24
- ㉑ PROPOSED BITUMINOUS SURFACE REMOVAL - 2 1/2"
- ㉒ PROPOSED TEMPORARY SIDEWALK - 4"***
- ㉓ PROPOSED PAVEMENT FABRIC
- ㉔ PROPOSED COMPACT SAND FILL
- ㉕ PROPOSED COMBINATION CONCRETE CURB AND GUTTER, TYPE B-6.12
- ㉖ PROPOSED PROCESSING LIME STABILIZED SOIL MIXTURE 12"
- ㉗ PROPOSED SAW CUT
- ㉘ EXISTING TIE BARS

- NOTES:
- *CONCRETE MEDIAN TYPE SB-6.12 EXTENDS FROM STA. 71+25.08 TO STA. 75+51.28 SEE DETAIL B AND D.
 - **CONCRETE MEDIAN SURFACE EXTENDS FROM STA. 65+14.95 TO STA. 68+68.50
 - ***TEMPORARY SIDEWALK EXTENDS FROM STA. 64+45.00 TO STA. 68+74.50 AND STA. 71+19.08 TO STA. 75+64.26(LT) AND STA. 64+40.00 TO STA. 64+87.00 (RT)
 - ****EXISTING RESURFACING DOES NOT EXTEND INTO GUTTER FLAG

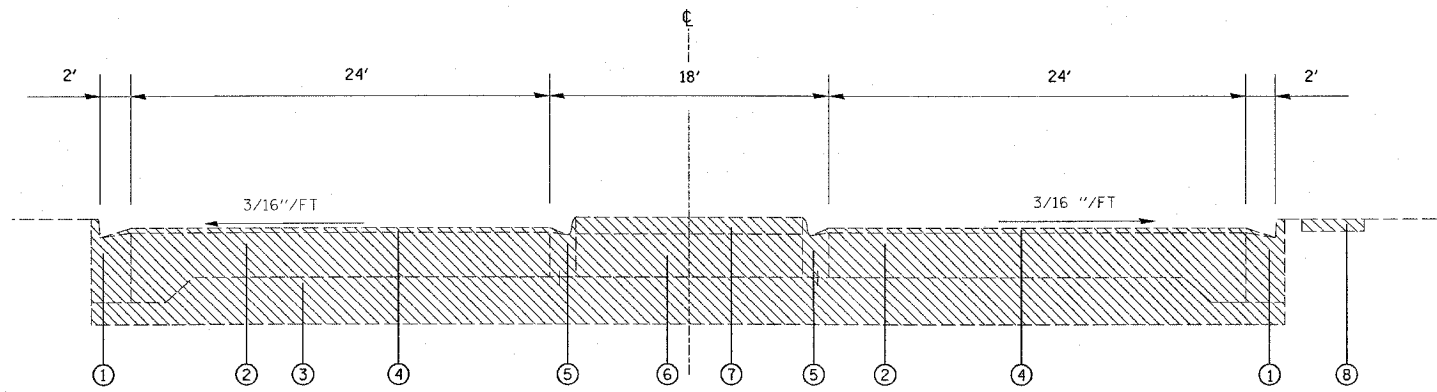
REMOVAL



DETAIL A

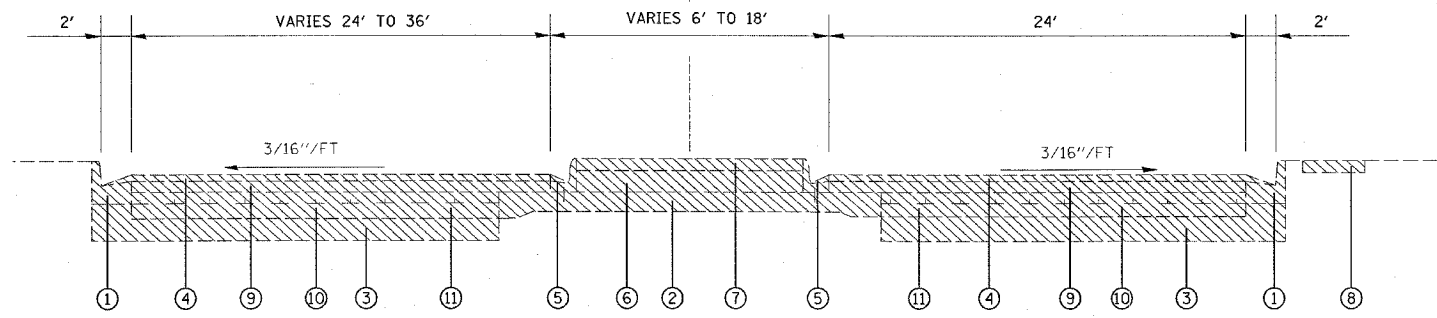


DETAIL B



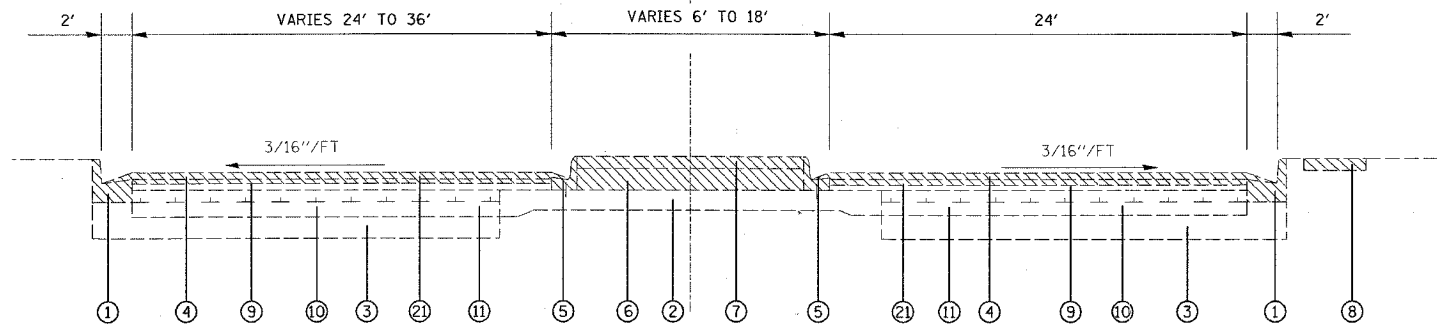
EXISTING TYPICALS

STA. 68+74.50 TO STA. 69+04.50
STA. 70+89.08 TO STA. 71+19.08)--SEE BRIDGE PLANS FOR PROP. BRIDGE APPR. PAVT.



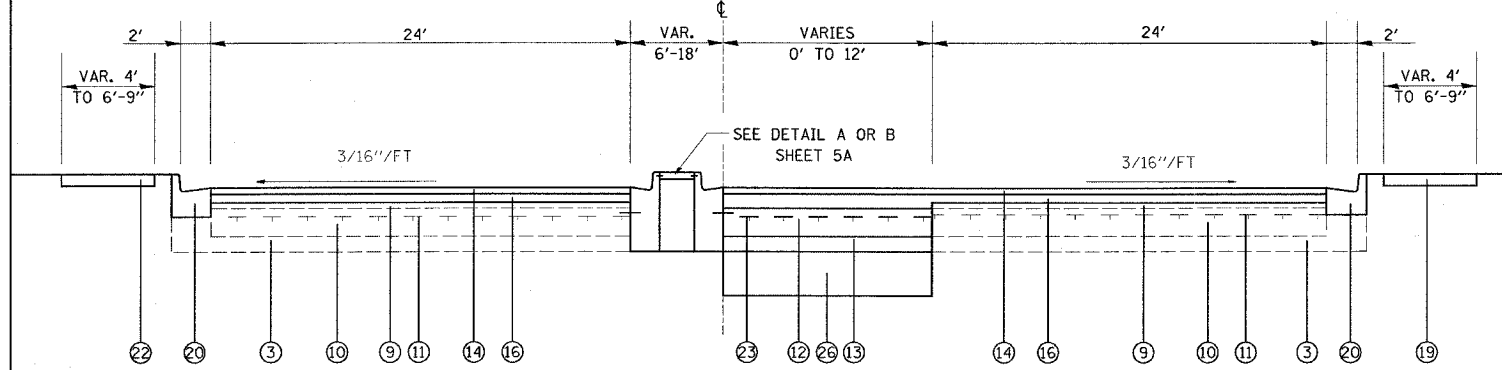
EXISTING TYPICALS

STA. 68+68.50 TO STA. 68+74.50
STA. 71+19.08 TO STA. 71+25.08)--SEE BRIDGE PLANS FOR PROP. BRIDGE APPR. PAVT.



EXISTING TYPICALS

STA. 67+75.00 TO STA. 68+68.50
STA. 71+25.08 TO STA. 72+00.00****



PROPOSED TYPICALS

STA. 67+75.00 TO STA. 68+68.50 DETAIL A
STA. 71+25.08 TO STA. 72+00.00 DETAIL B

REVISIONS	
NAME	DATE

ILLINOIS DEPARTMENT OF TRANSPORTATION
**EXISTING AND PROPOSED
ROADWAY TYPICALS ROADWAY**
FAP ROUTE 805 (IL 161)
SECTION 122 VBR-I
ST. CLAIR COUNTY

DRAWN BY:

PLOT DATE: 10/19/2006

DATE	
PLAN	
SURVEYED	
PLOTTED	
DESIGNED	
RT. OF WAY CHECKED	
CADD FILE NAME	

PROJECT: 10/19/2006
 C:\projects\10/19/2006\10/19/2006\10/19/2006.dgn
 PLOT DATE: 10/19/2006