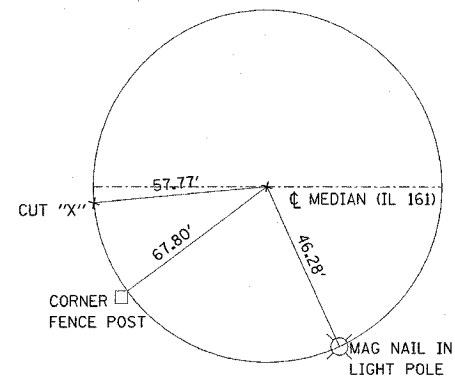
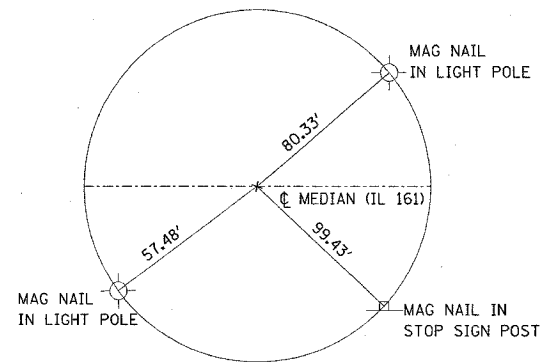


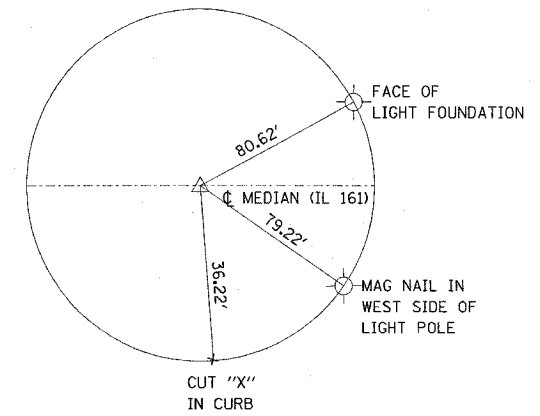
F.A.P. RTE.	SECTION	COUNTY	TOTAL SHEETS	SHEET NO.
805	122-VBR-I	ST. CLAIR	58	7
STA.		TO STA.		
FED. ROAD DIST. NO.		ILLINOIS	FED. AID PROJECT	



TIE POINT  
CUT "X"  
STA. 65+74.95



TIE POINT  
MAG NAIL  
STA. 72+51.21



TIE POINT  
MAG NAIL  
STA. 74+00

PLOT DATE = 8/23/2006  
 FILE NAME = \\sfr1702\plan\plan\097.dgn  
 PLOT SCALE = 20.0000 / IN.  
 USER NAME = csmerton

REVISIONS	
NAME	DATE

ILLINOIS DEPARTMENT OF TRANSPORTATION  
**ALIGNMENTS AND TIE POINTS**  
 FAP ROUTE 805 (IL 161)  
 SECTION 122-VBR-I  
 ST. CLAIR COUNTY