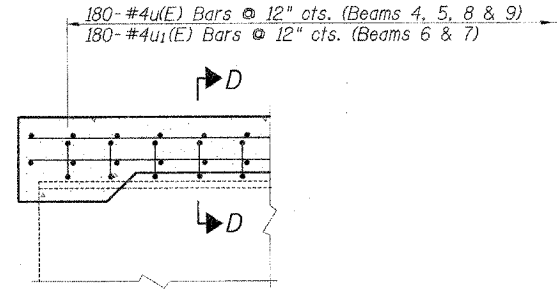
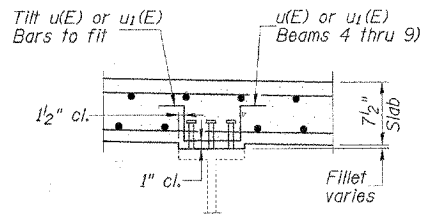


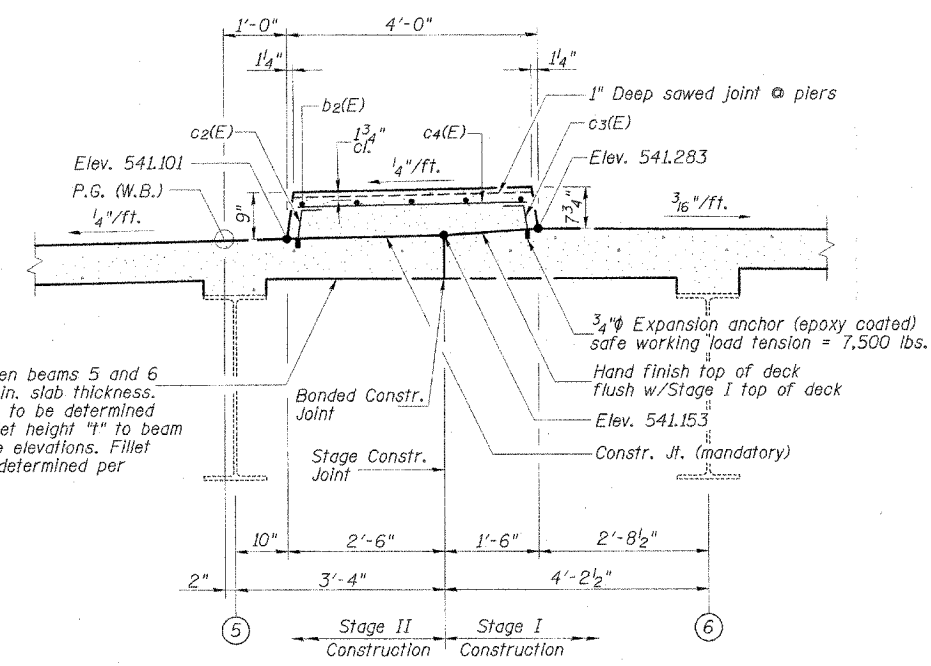
SECTION A-A



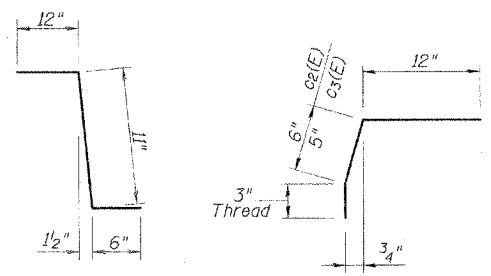
SECTION B-B



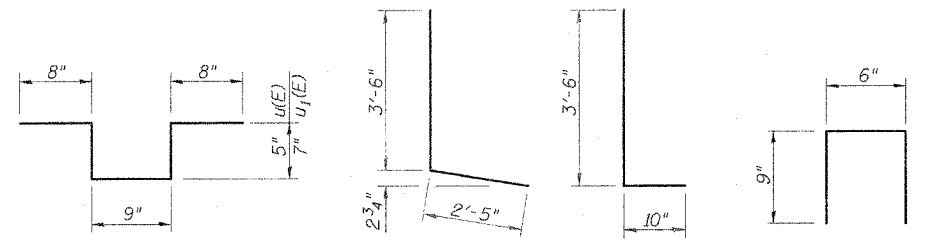
SECTION D-D



DETAIL "B"
SECTION THRU RAISED MEDIAN
(looking East)



BAR c(E) BAR c2(E) & c3(E)



BAR u(E) & u1(E) BAR d(E) BAR d1(E) BAR d2(E)

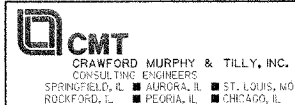
**SUPERSTRUCTURE
BILL OF MATERIAL**

Bar	No.	Size	Length	Shape
d(E)	636	#5	26'-3"	—
a1(E)	636	#5	23'-3"	—
a2(E)	363	#5	36'-9"	—
a3(E)	273	#5	35'-0"	—
b(E)	534	#5	31'-10"	—
b1(E)	170	#6	41'-0"	—
b2(E)	791	#5	27'-6"	—
c(E)	364	#5	2'-5"	U
c1(E)	364	#5	7'-5"	—
c2(E)	182	#5	1'-9"	—
c3(E)	182	#5	1'-8"	—
c4(E)	182	#5	3'-3"	—
d(E)	364	#4	5'-11"	—
d1(E)	364	#6	4'-4"	—
d2(E)	84	#4	2'-0"	—
e(E)	96	#4	16'-9"	—
e1(E)	48	#4	13'-9"	—
e2(E)	64	#4	8'-11"	—
u(E)	720	#4	2'-11"	—
u1(E)	360	#4	3'-3"	—
Reinforcement Bars, Epoxy Coated		Pound	120600	
Concrete Superstructure		Cu. Yds.	528.1	
Bar Splicers		Each	636	

Reinforcement bars designated (E) shall be epoxy coated.
Bars indicated thus 1 x -#5 etc. indicates 1 line of bars with lengths per line.

REVISIONS	
NAME	DATE

ILLINOIS DEPARTMENT OF TRANSPORTATION
SUPERSTRUCTURE DETAILS
F.A.P. ROUTE 805
SECTION 122VBR-1
ST. CLAIR COUNTY
ILLINOIS ROUTE 161 OVER METRO-LINK
STATION 69+96.56 S.N. 082-0091
SCALE: NONE DRAWN BY: GLD
DATE: 7/03/06 CHECKED BY: GBR



L:\DDOT\040610\work\100-der-15\DRAWING\Sheets\REVISED\DGMS\STAGING\CHAMBERLAIN\DETAILS 2-REV.dgn 6/30/2006