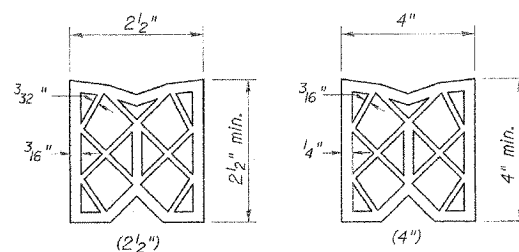
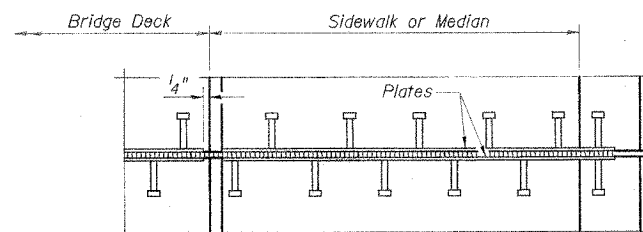


SECTION THRU EXPANSION JOINT
(2 1/2" and 4" joint seals)

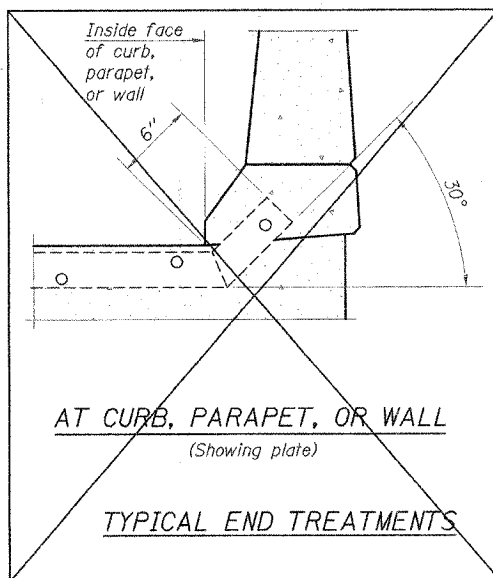
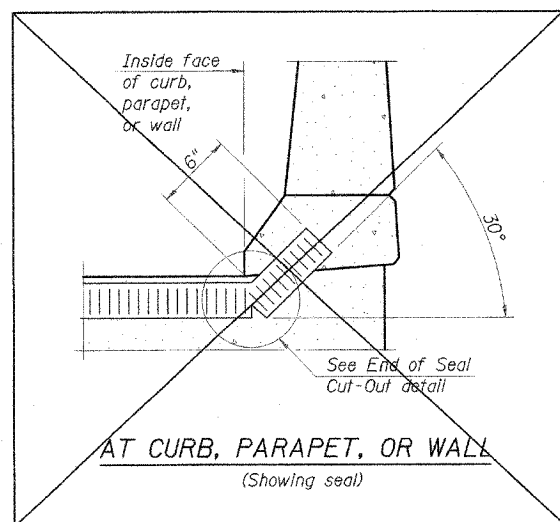


PREFORMED JOINT SEAL

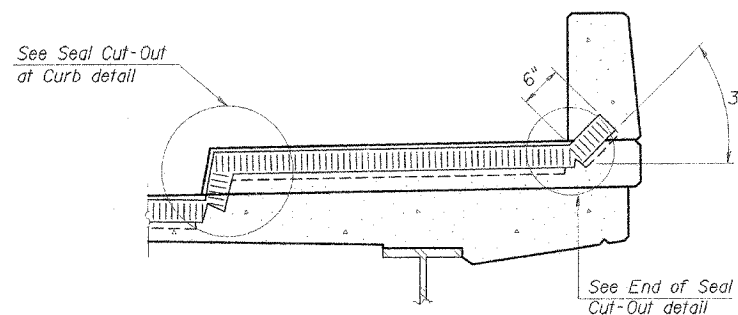
Design Movement	Required Preformed Joint Seal Size	Required Strip Seal Rated movement
1"	2 1/2"	1"
1 5/8"	4"	2"



PLAN AT SIDEWALK OR MEDIAN



TYPICAL END TREATMENTS



AT SIDEWALK OR MEDIAN*
(Showing plate and seal)

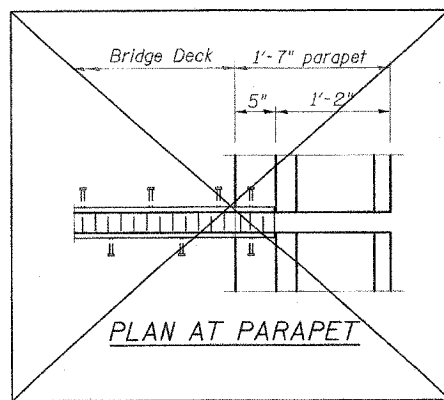
*Shorter plates with a single row of studs at 12" centers may be necessary on medians which are shallower than 9". See manufacturer's recommendation.

BILL OF MATERIAL

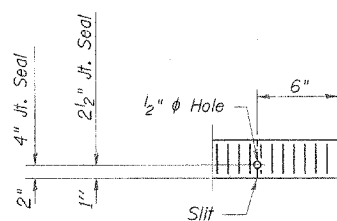
Item	Unit	Total
Bridge Joint System (Expansion) 1"	foot	87
Bridge Joint System (Expansion) 1 5/8"	foot	87

NOTES:

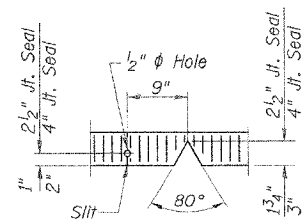
- Furnish steel plates in segments of 20 feet maximum length. Maximum space between installed segments shall be 3/16". Seal space with silicone sealant suitable for structural steel.



PLAN AT PARAPET



END OF SEAL CUT-OUT



SEAL CUT-OUT AT CURB

BRIDGE JOINT SYSTEM - EXPANSION
(PREFORMED JOINT SEAL)



REVISIONS	
NAME	DATE

ILLINOIS DEPARTMENT OF TRANSPORTATION
BRIDGE JOINT SYSTEM - 1
F.A.P. ROUTE 805
SECTION 122VBR-1
ST. CLAIR COUNTY
ILLINOIS ROUTE 161 OVER METRO-LINK
STATION 69+96.56 S.N. 082-0091
SCALE: NONE DRAWN BY: GLD
DATE: 7/03/06 CHECKED BY: GBR

L:\DOT\04066\0\work\01-dbr-5\DRAW\Sheets\REVISED DGN\5. SI ADPINE CHANGE BR JOINT 515.11.DGN 7/3/2006

EJ-BJS