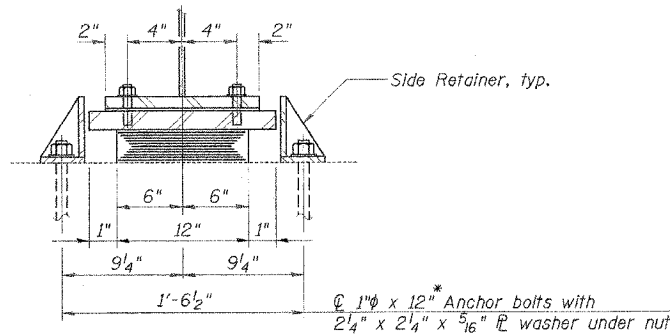


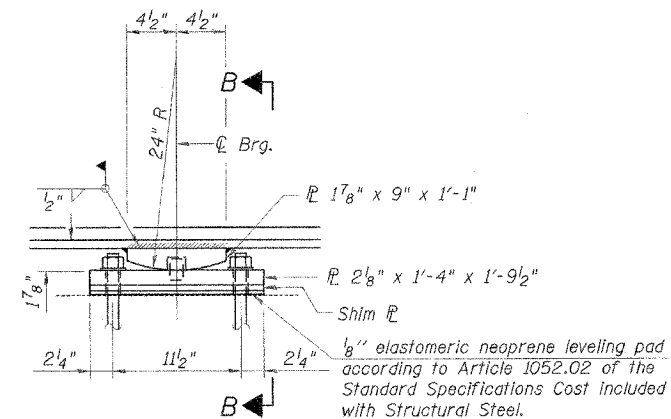
ELEVATION AT WEST ABUT.

TYPE I ELASTOMERIC EXP. BRG. - WEST ABUTMENT
(12 REQUIRED)



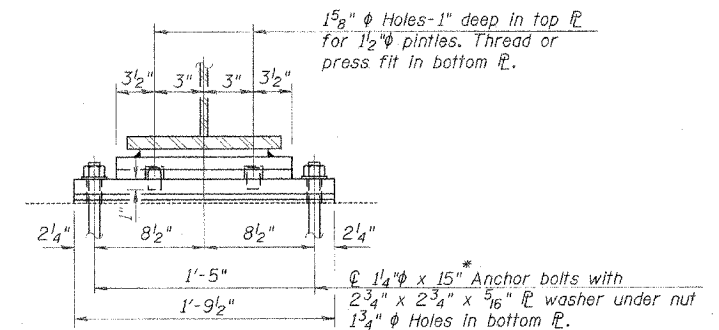
SECTION A-A

Notes:
All bearing plates, pintles & shim plates shall be AASHTO M270 Grade 50.



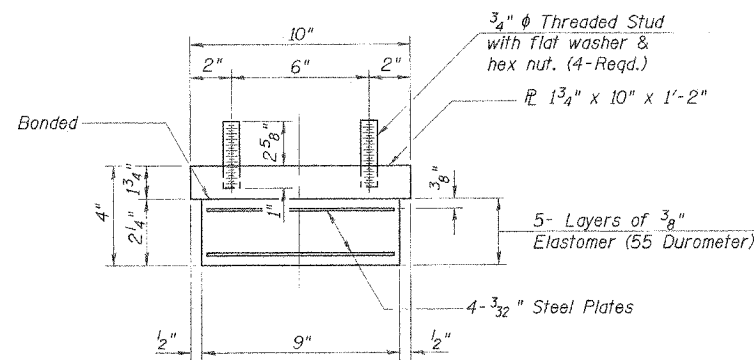
ELEVATION AT PIER

FIXED BEARING - PIER 1



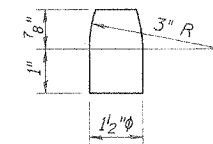
SECTION B-B

*Length shown is the required total length for the Illinois Coil Anchor Bolt. The required total length for the sealed capsule alternate anchor bolt shall be according to the manufacturers recommendations.

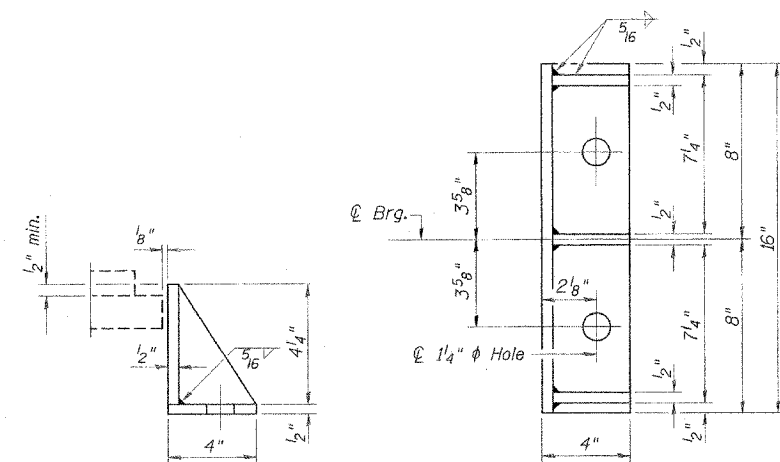


BEARING ASSEMBLY

Note:
Shim plates shall not be placed under Bearing Assembly.

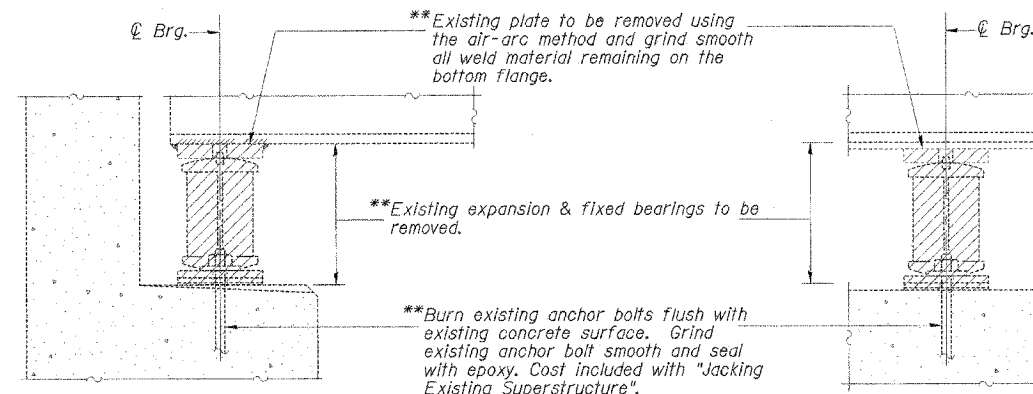


PINTLE



SIDE RETAINER

Equivalent rolled angle with stiffeners will be allowed in lieu of welded plates. Weight included with Structural Steel.



EXISTING BEARING AT ABUTMENT REMOVAL DETAIL

EXISTING BEARING AT PIER REMOVAL DETAIL

**Cost included with Jacking Existing Superstructure.

BILL OF MATERIAL

Item	Unit	Total
Elastomeric Bearing Assembly Type I	Each	12

NOTES:

- Diaphragm removal & reinstallation may be required to facilitate drilling holes. Cost shall be included in the cost of "Furnishing & Erecting Structural Steel".
- See Sheet 18 of 26 for anchor bolt installation.

REVISIONS		ILLINOIS DEPARTMENT OF TRANSPORTATION BEARINGS DETAILS 1 F.A.P. ROUTE 805 SECTION 122VBR-1 ST. CLAIR COUNTY ILLINOIS ROUTE 161 OVER METRO-LINK STATION 69+96.56 S.N. 082-0091 SCALE: NONE DATE: 7/03/06	DRAWN BY: GLD CHECKED BY: GBR
NAME	DATE		

