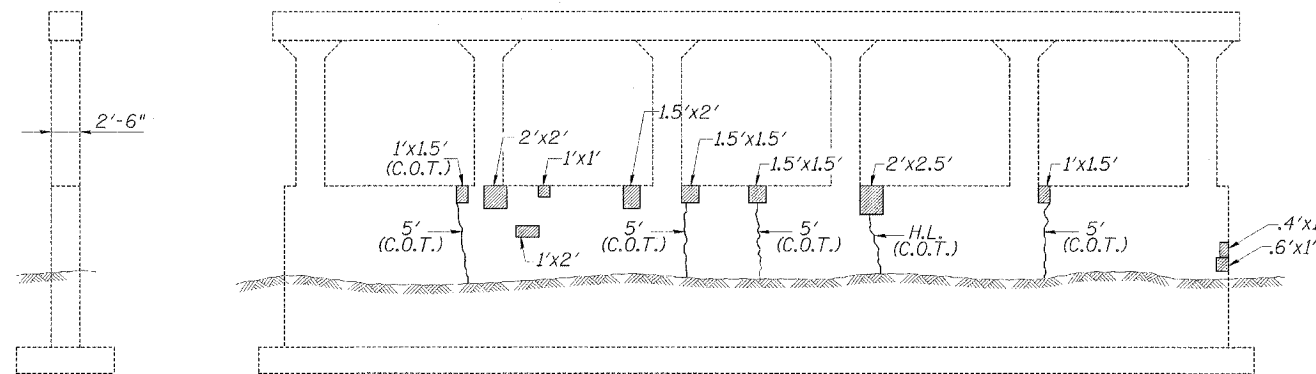


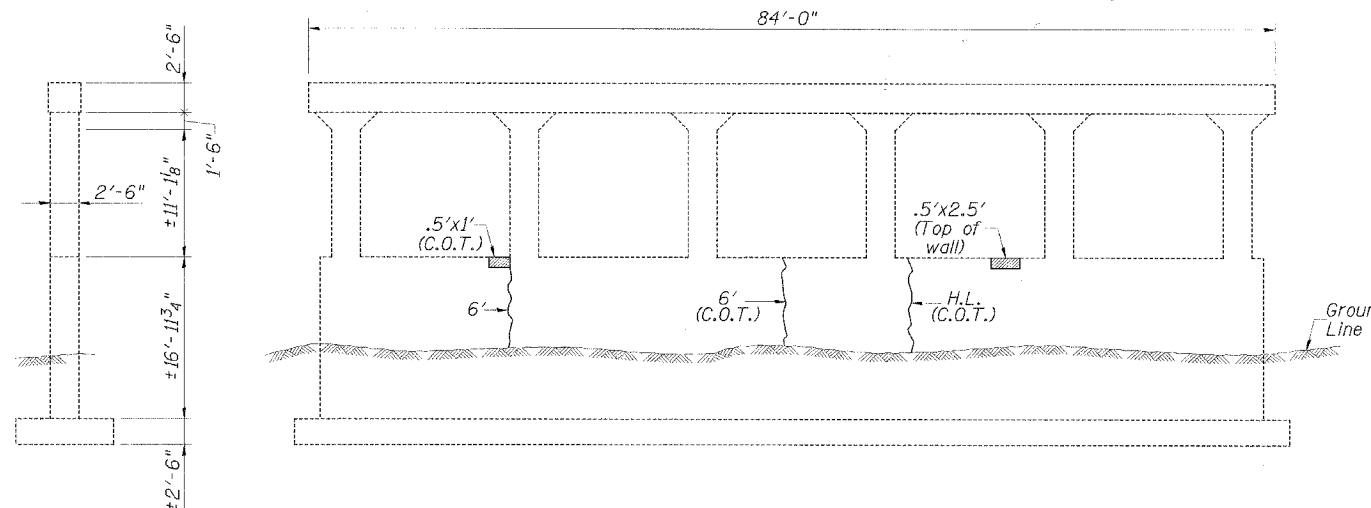
ELEVATION - PIER 1
(Looking East)



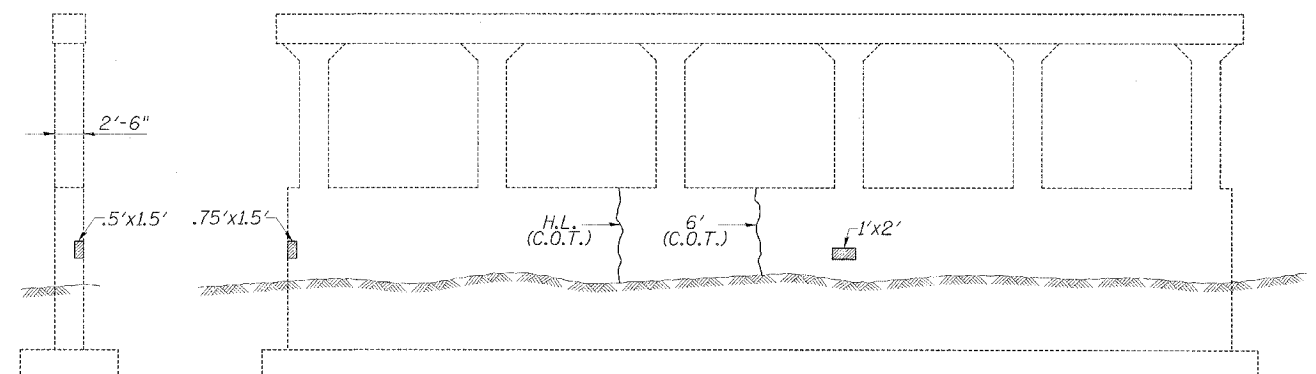
ELEVATION - PIER 1
(Looking West)

END VIEW - PIER 1
(Looking South)

END VIEW - PIER 1
(Looking North)



ELEVATION - PIER 2
(Looking East)



ELEVATION - PIER 2
(Looking West)

END VIEW - PIER 2
(Looking South)

END VIEW - PIER 2
(Looking North)

BILL OF MATERIAL - TWO PIERS

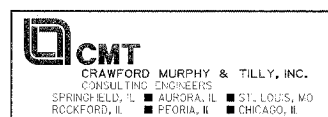
Item	Unit	Quantity
Structural Repair of Concrete (Depth Equal to or Less Than 5 In.)	Sq. Ft.	55.2
Epoxy Crack Sealing	Foot	68.5

LEGEND

- Structural Repair of Concrete (Depth Equal to or Less Than 5 In.)
- Epoxy Crack Sealing (Crack widths shown are approx. 1/16" to 1/8" in width)
- Hairline Crack (Not to be sealed)
- C.O.T. = (Continues over top)

REVISIONS	
NAME	DATE

ILLINOIS DEPARTMENT OF TRANSPORTATION
PIER REPAIR DETAILS
 F.A.P. ROUTE 805
 SECTION 122VBR-1
 ST. CLAIR COUNTY
 ILLINOIS ROUTE 161 OVER METRO-LINK
 STATION 69+96.56 S.N. 082-0091
 SCALE: NONE DRAWN BY: GLD
 DATE: 7/03/06 CHECKED BY: GBR



I:\DOT\040600\work\order_5\Draw\Sheets\REVISED DGN'S STAGING CHANSEPIER REPAIR DETAILS.dgn 5/15/2016