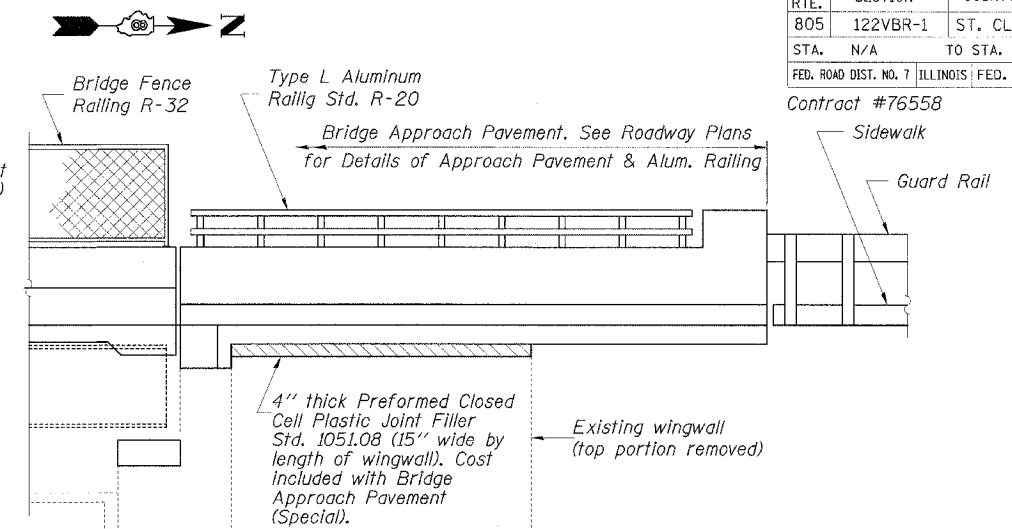


**ELEVATION**  
(Looking West)



**APPROACH PARAPET ELEVATION VIEW**

**BILL OF MATERIAL**

| Bar                              | No. | Size    | Length  | Shape |
|----------------------------------|-----|---------|---------|-------|
| h10 (E)                          | 8   | #6      | 25'-0"  | —     |
| h11 (E)                          | 4   | #6      | 36'-10" | —     |
| h12 (E)                          | 30  | #5      | 3'-2"   | —     |
| h13 (E)                          | 3   | #5      | 5'-9"   | —     |
| s10 (E)                          | 20  | #4      | 11'-5"  | □     |
| s11 (E)                          | 2   | #4      | 16'-7"  | □     |
| v10 (E)                          | 85  | #5      | 2'-0"   | —     |
| v11 (E)                          | 66  | #5      | 2'-7"   | —     |
| v12 (E)                          | 46  | #5      | 3'-7"   | —     |
| Concrete Structures              |     | Cu. Yd. | 3.5     |       |
| Reinforcement Bars, Epoxy Coated |     | Pound   | 1340    |       |
| Bar Splicers                     |     | Each    | 89      |       |

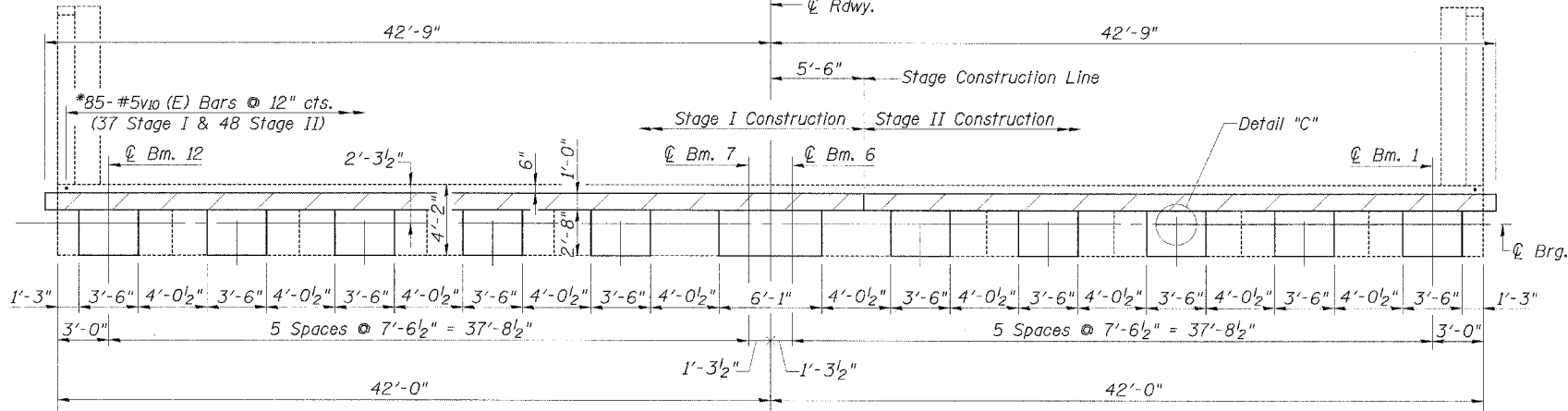
Reinforcement bars designated (E) shall be epoxy coated.

Place v11 (E) & v12 (E) bars the minimum distance away from the front face of the backwall to facilitate drilling holes. Cut v12 (E) to fit if required.

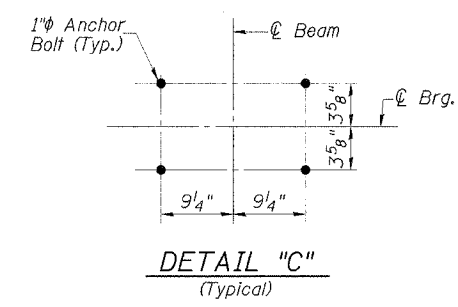
**NOTES**

- Hatched area to be poured after superstructure fastructure has been removed. Quantity of concrete included with concrete superstructure.
- For concrete removal see sheet 20 of 26.
- For anchor bolt installation see sheet 18 of 26.
- Reinforcement embedded into hatch block for the sidewalks and median is included in the cost of bridge Approach Pavement (Special). See Roadway Plans for details of the sidewalks and median on the bridge approach pavement.
- Reinforcement in pedestals shall be placed to miss anchor bolts.
- Existing vertical reinforcing steel to be incorporated into new work shall be cleaned, straightened, cut (if required) and incorporated into new construction. Damaged reinforcing steel shall be replaced or repaired as directed by the engineer. Cost included with "Concrete Removal".
- Reinforcement bars designated (E) shall be epoxy coated.
- For details of bar splices see sheet 26 of 26.
- Bars indicated thus 3x2-#6 etc. indicates 3 lines of bars with 2 lengths per line.
- Diaphragm removal & installation may be required to facilitate drilling holes. Cost shall be included in the cost of "Furnishing & Erecting Structural Steel".

\*Bars shall be epoxy grouted into  $\frac{7}{8}$ " holes, 1'-0" min. depth according to Section 584 of the Standard Specifications.

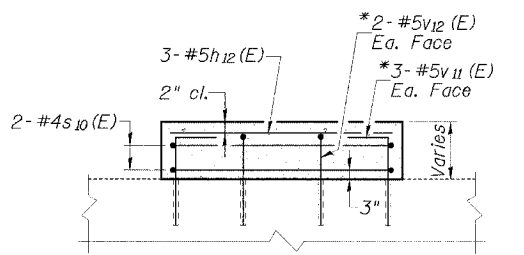


**TOP PLAN**

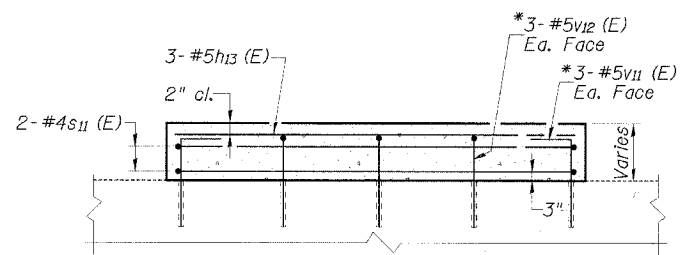


**DETAIL 'C'**  
(Typical)

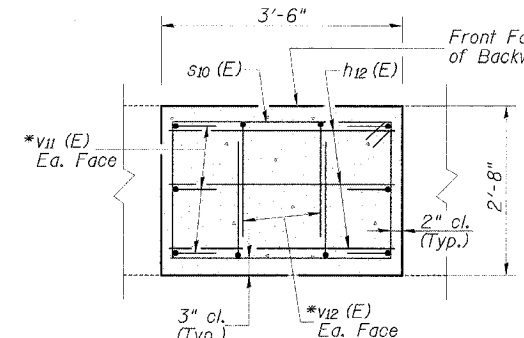
**MIN. BAR LAPS**  
#6 Bar = 2'-0"



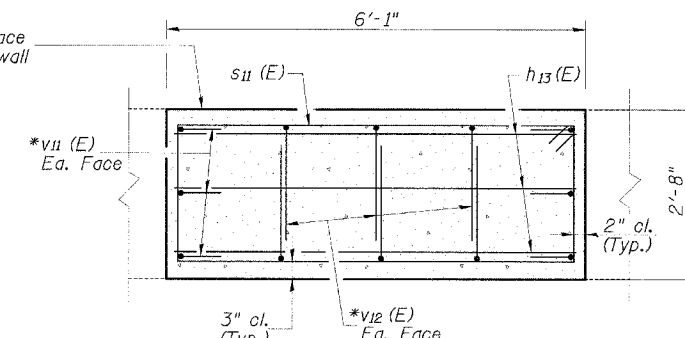
**ELEVATION - PEDESTAL A**



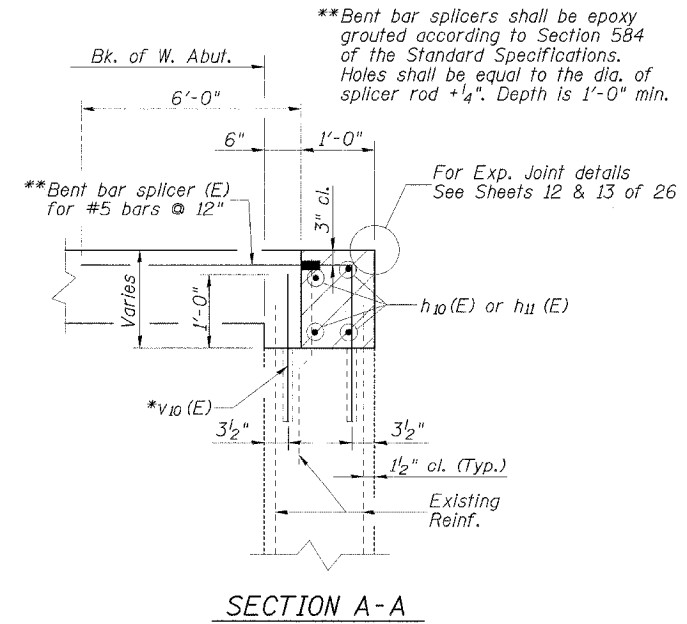
**ELEVATION - PEDESTAL B**



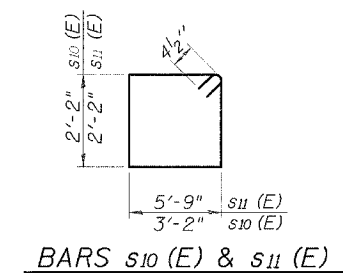
**PLAN - PEDESTAL A**



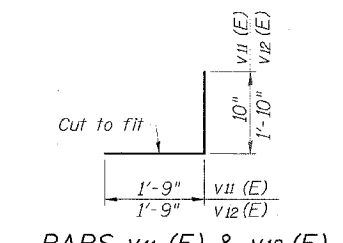
**PLAN - PEDESTAL B**



**SECTION A-A**



**BARS s10 (E) & s11 (E)**



**BARS v11 (E) & v12 (E)**

| REVISIONS |      |
|-----------|------|
| NAME      | DATE |
|           |      |
|           |      |
|           |      |
|           |      |
|           |      |
|           |      |
|           |      |
|           |      |
|           |      |

ILLINOIS DEPARTMENT OF TRANSPORTATION  
**WEST ABUTMENT DETAILS**  
F.A.P. ROUTE 805  
SECTION 122VBR-1  
ST. CLAIR COUNTY  
ILLINOIS ROUTE 161 OVER METRO-LINK  
STATION 69+96.56 S.N. 082-0091  
SCALE: NONE DRAWN BY: GLD  
DATE: 7/03/06 CHECKED BY: GBR

**CMT**  
CRAWFORD MURPHY & TILLY, INC.  
CONSULTING ENGINEERS  
SPRINGFIELD, IL ■ AURORA, IL ■ ST. LOUIS, MO  
ROCKFORD, IL ■ PEORIA, IL ■ CHICAGO, IL