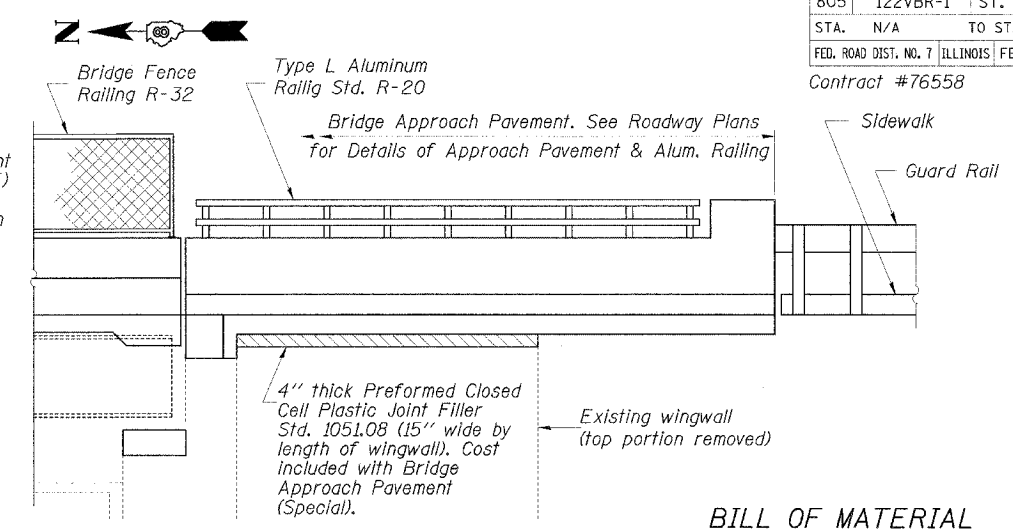


APPROACH PARAPET ELEVATION VIEW



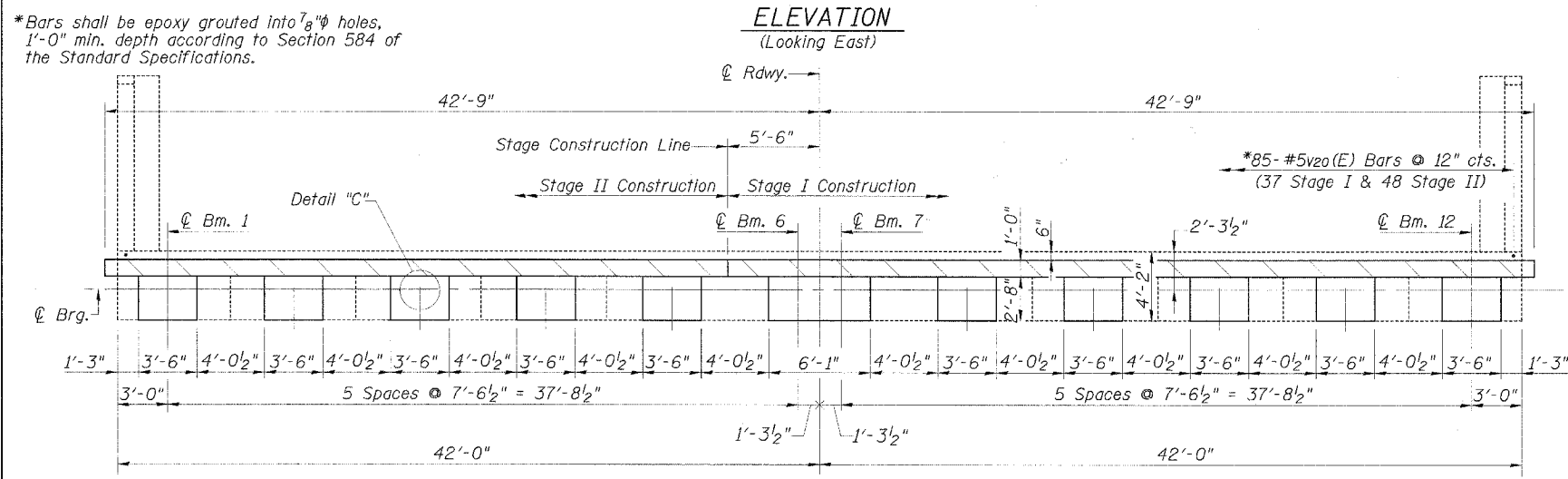
BILL OF MATERIAL

Bar	No.	Size	Length	Shape
h20(E)	8	#6	25'-0"	
h21(E)	4	#6	36'-10"	
h22(E)	30	#5	3'-2"	
h23(E)	3	#5	5'-9"	
s20(E)	20	#4	11'-5"	
s21(E)	2	#4	16'-7"	
v20(E)	85	#5	2'-0"	
v21(E)	66	#5	2'-3"	
v22(E)	46	#5	3'-3"	
Concrete Structures		Cu. Yd.	2.6	
Reinforcement Bars, Epoxy Coated		Pound	1300	
Bar Splicers		Each	89	

Reinforcement bars designated (E) shall be epoxy coated.

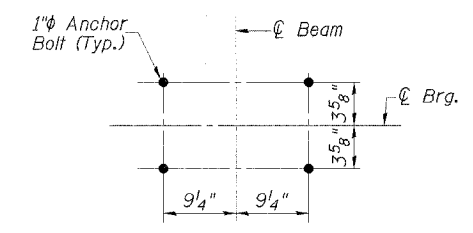
Place v21(E) & v22(E) bars the minimum distance away from the front face of the backwall to facilitate drilling holes. Cut v22(E) to fit if required.

*Bars shall be epoxy grouted into 7/8" holes, 1'-0" min. depth according to Section 584 of the Standard Specifications.



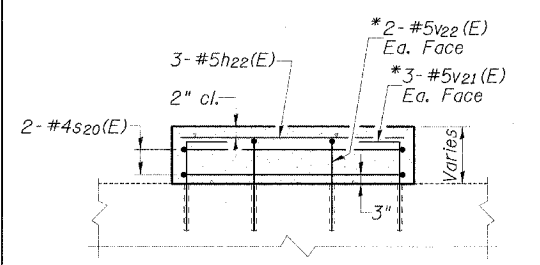
ELEVATION (Looking East)

TOP PLAN

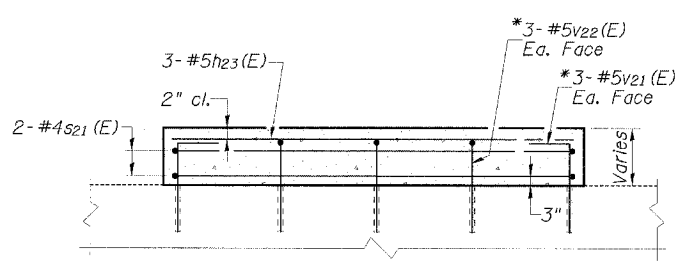


DETAIL "C" (Typical)

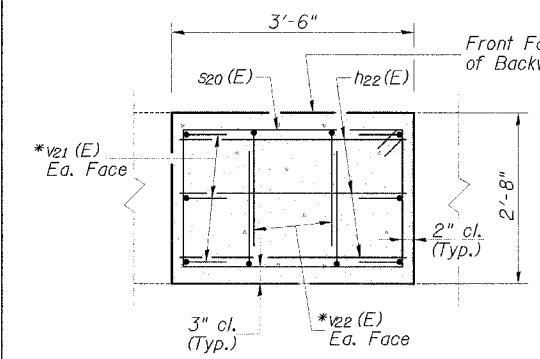
MIN. BAR LAPS #6 Bar = 2'-0"



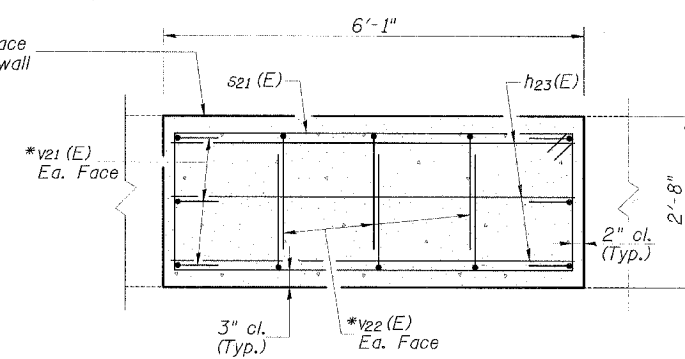
ELEVATION - PEDESTAL A



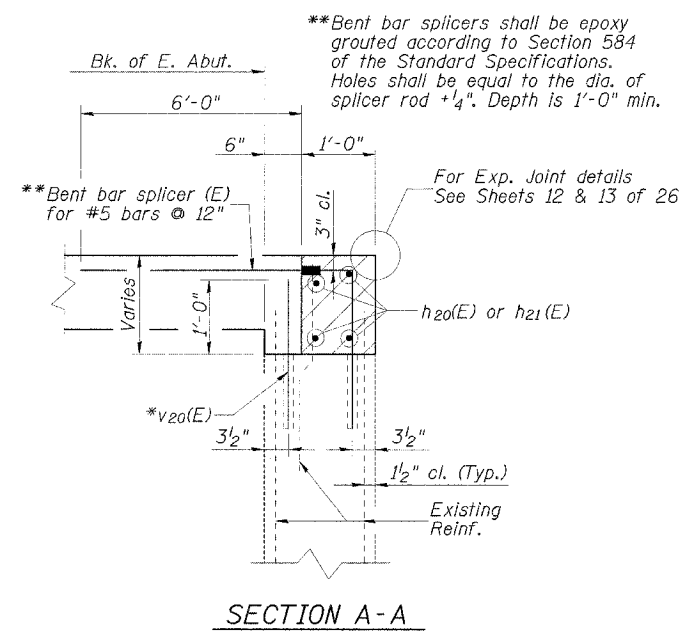
ELEVATION - PEDESTAL B



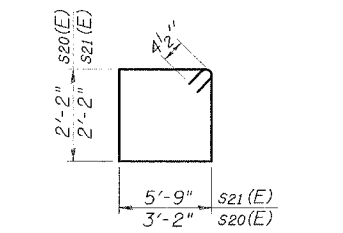
PLAN - PEDESTAL A



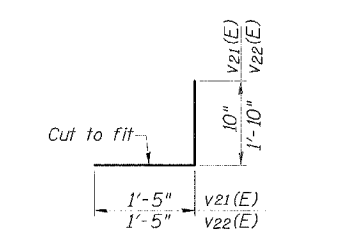
PLAN - PEDESTAL B



SECTION A-A



BARS s20(E) & s21(E)



BARS v21(E) & v22(E)

NOTES

- Hatched area to be poured after superstructure fasework has been removed. Quantity of concrete included with concrete superstructure.
- For concrete removal see sheet 20 of 26.
- For anchor bolt installation see sheet 18 of 26.
- Reinforcement embedded into hatch block for the sidewalks and median is included in the cost of bridge Approach Pavement (Special). See Roadway Plans for details of the sidewalks and median on the bridge approach pavement.
- Reinforcement in pedestals shall be placed to miss anchor bolts.
- Existing vertical reinforcing steel to be incorporated into new work shall be cleaned, straightened, cut (if required) and incorporated into new construction. Damaged reinforcing steel shall be replaced or repaired as directed by the engineer. Cost included with "Concrete Removal".
- Reinforcement bars designated (E) shall be epoxy coated.
- For details of bar splices see sheet 26 of 26.
- Bars indicated thus 3x2-#6 etc. indicates 3 lines of bars with 2 lengths per line.
- Diaphragm removal & reinstallation may be required to facilitate drilling holes. Cost shall be included in the cost of "Furnishing & Erecting Structural Steel".

REVISIONS	
NAME	DATE

ILLINOIS DEPARTMENT OF TRANSPORTATION
EAST ABUTMENT DETAILS
 F.A.P. ROUTE 805
 SECTION 122VBR-1
 ST. CLAIR COUNTY
 ILLINOIS ROUTE 161 OVER METRO-LINK
 STATION 69+96.56 S.N. 082-0091
 SCALE: NONE DRAWN BY: GLD
 DATE: 7/03/06 CHECKED BY: GBR

CMT
 CRAWFORD MURPHY & TILLY, INC.
 CONSULTING ENGINEERS
 SPRINGFIELD, IL ■ AURORA, IL ■ ST. LOUIS, MO
 ROCKFORD, IL ■ PEORIA, IL ■ CHICAGO, IL

L:\DOT\04666\Wor<Order>-5\DRAW\Spec\REF\STG\STAGING CHANGE\EAST ABUT DETAILS REV.dgn
 8/23/2006