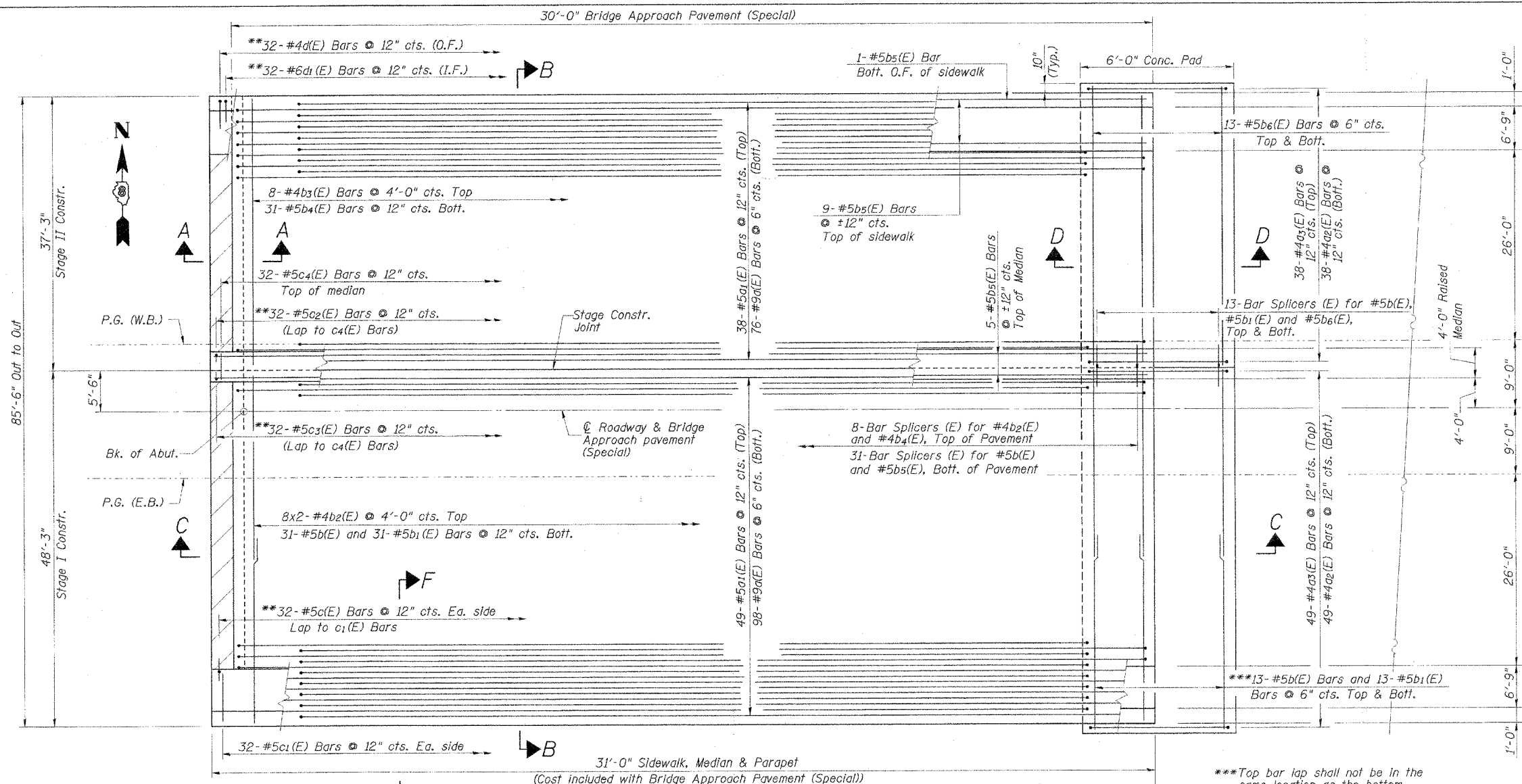


F.A.P. RTE.	SECTION	COUNTY	TOTAL SHEETS	SHEET NO.
805	122VBR-1	ST. CLAIR	58	52
STA.	TO STA.			
FED. ROAD DIST. NO. 7	ILLINOIS FED. AID PROJECT			
	Contract #76558		SHEET 1 OF 4	

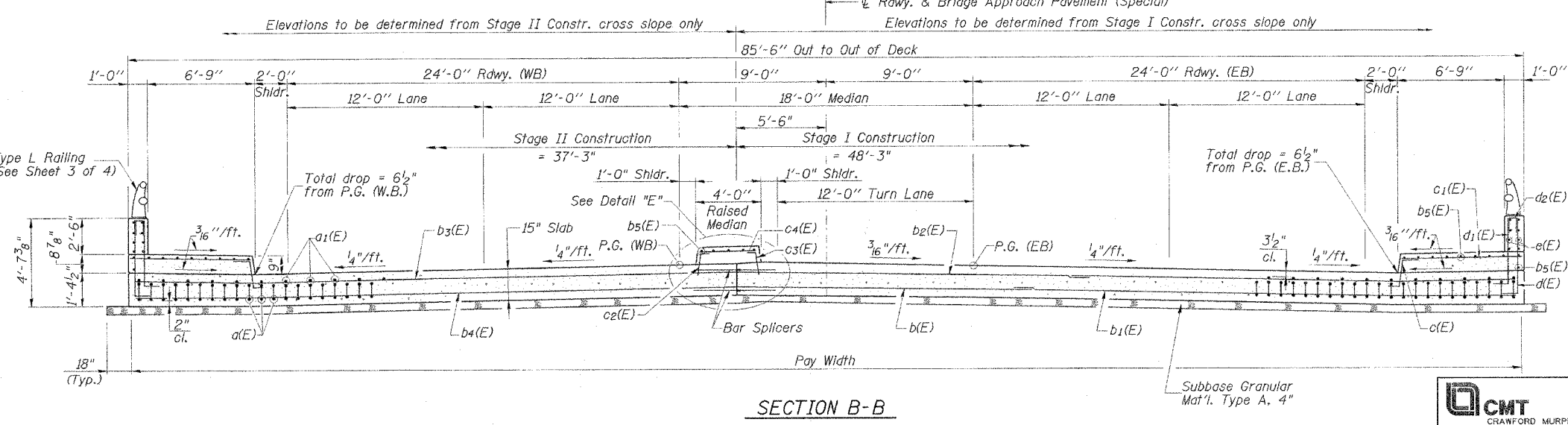


**Coordinate placement of c(E), cz(E), c3(E), d(E) & d1(E) bars located in the hatch block with bridge contractor. Cost included with Bridge Approach Pavement (Special)

***PLAN - BRIDGE APPROACH PAVEMENT (SPECIAL)**

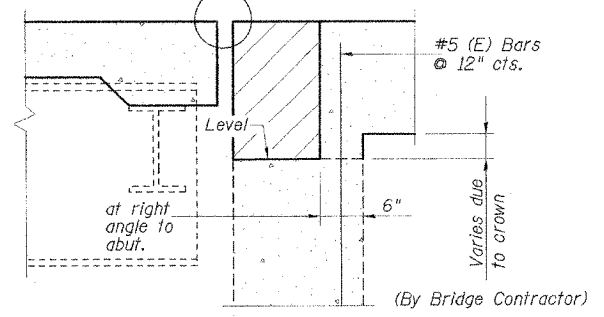
*East Approach shown. West Approach similar.

***Top bar lap shall not be in the same location as the bottom bar lap.

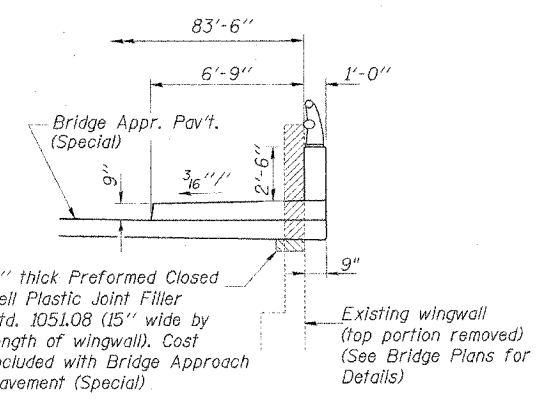


SECTION B-B

See Bridge Plans for Bridge Joint System Details. Coordinate placement of Bridge Joint System with Bridge Contractor.



SECTION A-A



SECTION F-F

DESIGN STRESSES

$f_c = 3,500$ psi
 $f_y = 60,000$ psi (reinforcement)
 $n = 8.5$

MIN. BAR LAPS

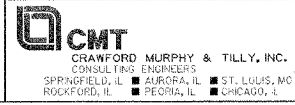
#4 Bar = 1'-4"
 #5 Bar = 1'-8"

NOTES:

1. Reinforcement bars designated (E) shall be epoxy coated.
2. All construction joints shall be bonded.
3. See Sheet 2 of 4 for Sections C-C, D-D & Detail "E".
4. For Bar Splicer Details see Sheet 4 of 4.
5. See Sheet 2 of 4 for Parapet Details and Bill of Material.
6. Hatch area to be poured after bridge superstructure falsework has been removed. Quantity of concrete included with Concrete Superstructure in Bridge Plans.
7. Bars indicated thus 8x2-#4 etc. indicates 8 lines of bars with 2 lengths per line.

REVISIONS	
NAME	DATE

ILLINOIS DEPARTMENT OF TRANSPORTATION
BRIDGE APPROACH PAVEMENT (SPECIAL)
PLAN AND TYP. CROSS SECTION
 F.A.P. ROUTE 805
 SECTION 122VBR-1
 ST. CLAIR COUNTY
 ILLINOIS ROUTE 161 OVER METRO-LINK
 SCALE: NONE DRAWN BY: GLD
 DATE: 7/03/06 CHECKED BY: CBR



I:\SUBJECT\04065610\WORK\04065610.dwg 5:03AM 11/27/2006 17/27/2006