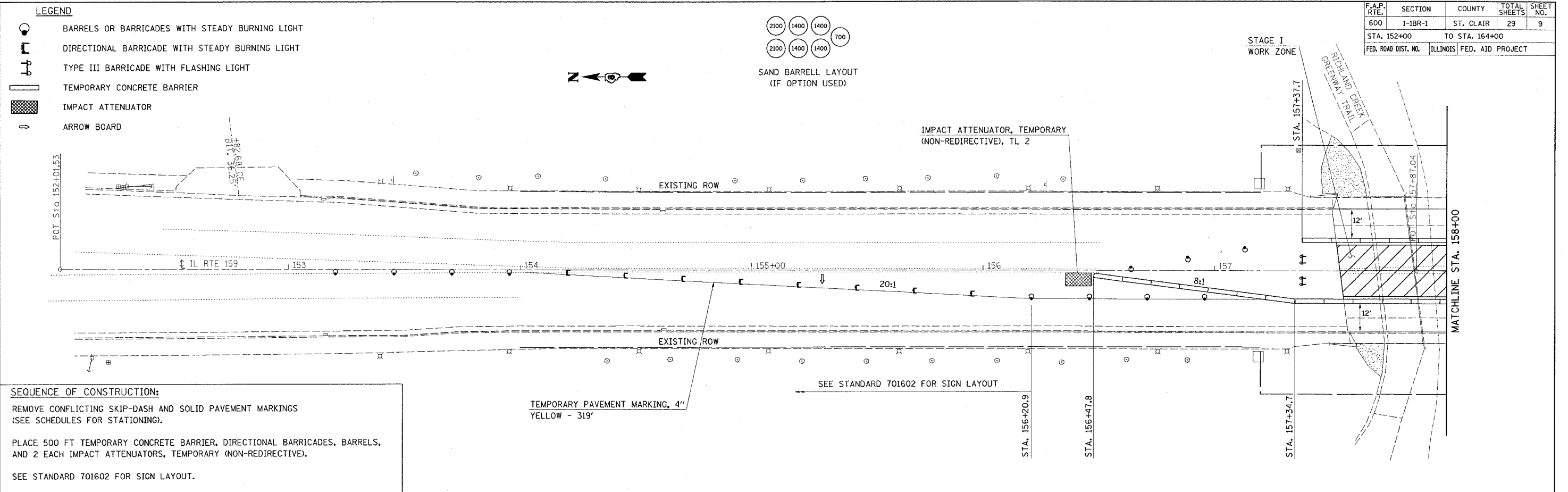


F.A.P. RTE.	SECTION	COUNTY	TOTAL SHEETS	SHEET NO.
600	1-1BR-1	ST. CLAIR	29	9
STA. 152+00		TO STA. 164+00		
FED. ROAD DIST. NO.		ILLINOIS FED. AID PROJECT		



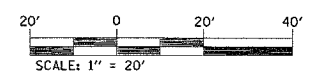
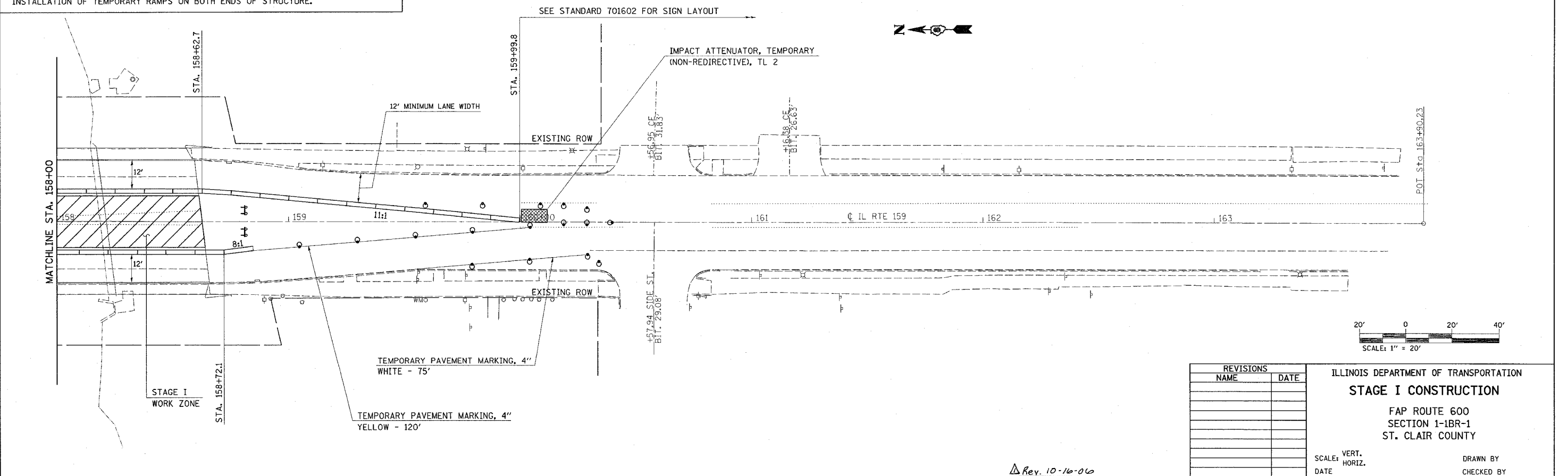
SEQUENCE OF CONSTRUCTION:

REMOVE CONFLICTING SKIP-DASH AND SOLID PAVEMENT MARKINGS (SEE SCHEDULES FOR STATIONING).

PLACE 500 FT TEMPORARY CONCRETE BARRIER, DIRECTIONAL BARRICADES, BARRELS, AND 2 EACH IMPACT ATTENUATORS, TEMPORARY (NON-REDIRECTIVE).

SEE STANDARD 701602 FOR SIGN LAYOUT.

PERFORM ALL NECESSARY BRIDGE WORK IN STAGE I WORK ZONE, INCLUDING INSTALLATION OF TEMPORARY RAMPS ON BOTH ENDS OF STRUCTURE.



REVISIONS	
NAME	DATE

ILLINOIS DEPARTMENT OF TRANSPORTATION

STAGE I CONSTRUCTION

FAP ROUTE 600
SECTION 1-1BR-1
ST. CLAIR COUNTY

SCALE: VERT. _____
HORIZ. _____

DATE _____ DRAWN BY _____
CHECKED BY _____

PLOT DATE = #DATE#
FILE NAME = #FILE#
PLOT SCALE = #SCALE#
USER NAME = #USER#

Rev. 10-16-06