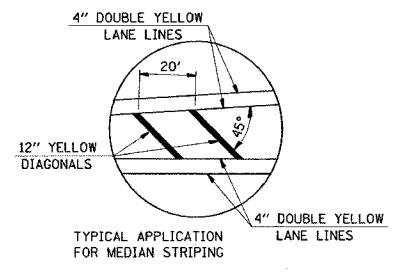
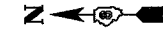
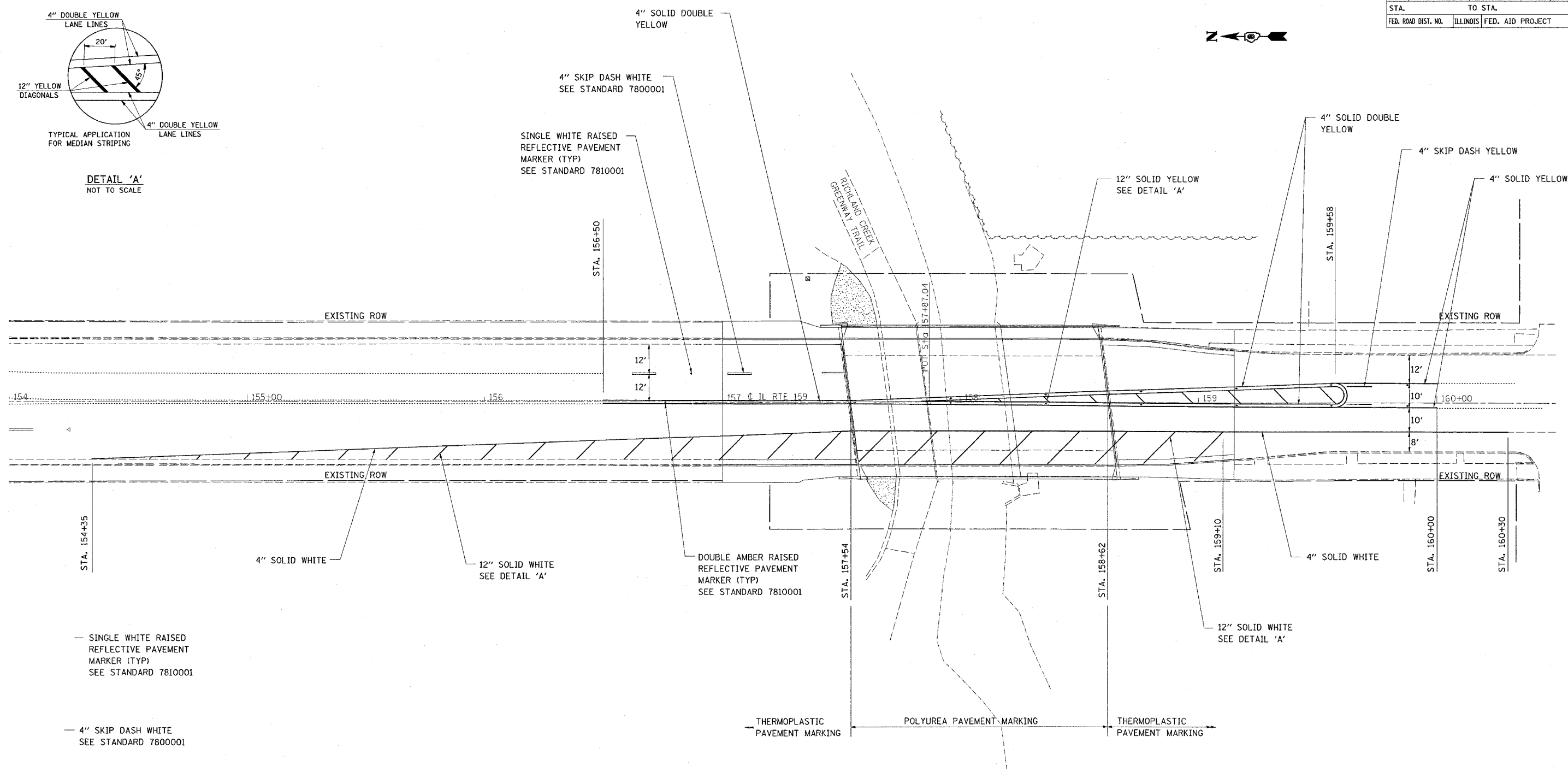


F.A.P. RTE.	SECTION	COUNTY	TOTAL SHEETS	SHEET NO.
600	1-1BR-1	ST. CLAIR	29	12
STA.		TO STA.		
FED. ROAD DIST. NO.		ILLINOIS FED. AID PROJECT		

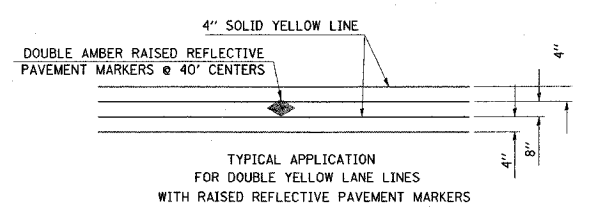


DETAIL 'A'
NOT TO SCALE

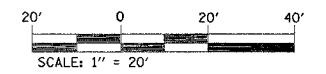


— SINGLE WHITE RAISED REFLECTIVE PAVEMENT MARKER (TYP) SEE STANDARD 7810001

— 4" SKIP DASH WHITE SEE STANDARD 7800001



DETAIL 'B'



PLOT DATE = 10/11/2006
FILE NAME = c:\p\projects\aed\0205\plan\p10306a.dgn
PLOT SCALE = 20.0000 / IN.
REFERENCE = REF#

Rev. 10-16-06

REVISIONS	
NAME	DATE

ILLINOIS DEPARTMENT OF TRANSPORTATION
PAVEMENT MARKING
FAP ROUTE 600
SECTION 1-1BR-1
ST. CLAIR COUNTY
SCALE: VERT. DATE
DRAWN BY
CHECKED BY