

SUMMARY OF QUANTITIES

F.A.P. RTE.	SECTION	COUNTY	TOTAL SHEETS	SHEET NO.
600	1-1BR-1	ST. CLAIR	29	3
STA.		TO STA.		
FED. ROAD DIST. NO.		ILLINOIS FED. AID PROJECT		

SUMMARY OF QUANTITIES			URBAN TOTAL QUANTITIES		CONSTRUCTION TYPE CODE	
CODE NO	ITEM	UNIT	X080-2A	SFTY-3N		
40600200	BITUMINOUS MATERIALS (PRIME COAT)	TON	0.2	0.2		
40600300	AGGREGATE (PRIME COAT)	TON	1	1		
40600990	TEMPORARY RAMP	SQ YD	179	179		
42400100	PORTLAND CEMENT CONCRETE SIDEWALK 4 INCH	SQ FT	1290	1290		
44000006	BITUMINOUS SURFACE REMOVAL 1 1/2"	SQ YD	547	547		
44000500	COMBINATION CURB AND GUTTER REMOVAL	FOOT	215	215	△	
44000600	SIDEWALK REMOVAL	SQ FT	1290	1290		
50101500	REMOVAL OF EXISTING SUPERSTRUCTURES	EACH	1	1		
50102400	CONCRETE REMOVAL	CU YD	7.3	7.3		
50300255	CONCRETE SUPERSTRUCTURE	CU YD	62.3	62.3		
50300260	BRIDGE DECK GROOVING	SQ YD	607	607		
50300300	PROTECTIVE COAT	SQ YD	840	840		
X5030305	CONCRETE WEARING SURFACE, 5"	SQ YD	767	767		
50400305	PRECAST PRESTRESSED CONCRETE DECK BEAMS (17" DEPTH)	SQ FT	6891	6891		
50800205	REINFORCEMENT BARS, EPOXY COATED	POUND	17550	17550		
50900905	REMOVING AND RE-ERECTING EXISTING RAILING	FOOT	248	248		
51401600	TEMPORARY BRIDGE RAIL	FOOT	220	220		
51500100	NAME PLATES	EACH	1	1		
60260100	INLETS TO BE ADJUSTED	EACH	2	2		
60605000	COMBINATION CONCRETE CURB AND GUTTER, TYPE B-6.24	FOOT	214.5	214.5		
X63100110	TRAFFIC BARRIER TERMINAL, TYPE 11	EACH	4	4		
63200310	GUARDRAIL REMOVAL	FOOT	42	42		
67000400	ENGINEER'S FIELD OFFICE, TYPE A	CAL MO	14	14		
67100100	MOBILIZATION	L SUM	1	1		
70100460	TRAFFIC CONTROL AND PROTECTION, STANDARD 701306	L SUM	1	1		
70102640	TRAFFIC CONTROL AND PROTECTION, STANDARD 701801	L SUM	1	1		
70102672	TRAFFIC CONTROL AND PROTECTION, STANDARD 701602, SPECIAL	L SUM	1	1		
70300100	SHORT-TERM PAVEMENT MARKING	FOOT	240	240	△	
70300220	TEMPORARY PAVEMENT MARKING - LINE 4"	FOOT	3615	3615		
70300240	TEMPORARY PAVEMENT MARKING - LINE 6"	FOOT	800	800	△	
70300260	TEMPORARY PAVEMENT MARKING - LINE 12"	FOOT	356	356		
70301000	WORK ZONE PAVEMENT MARKING REMOVAL	SQ FT	1556	1556	△	

SUMMARY OF QUANTITIES			URBAN TOTAL QUANTITIES		CONSTRUCTION TYPE CODE	
CODE NO	ITEM	UNIT	X080-2A	SFTY-3N		
70400500	TEMPORARY CONCRETE BARRIER (STATE OWNED)	FOOT	537.5	537.5	△	
70400600	RELOCATE TEMPORARY CONCRETE BARRIER (STATE OWNED)	FOOT	337.5	337.5		
X78000200	THERMOPLASTIC PAVEMENT MARKING - LINE 4"	FOOT	1042	1042		
X78000600	THERMOPLASTIC PAVEMENT MARKING - LINE 12"	FOOT	229	229		
X78008210	POLYUREA PAVEMENT MARKING TYPE I - LINE 4"	FOOT	545	545		
X78008250	POLYUREA PAVEMENT MARKING TYPE I - LINE 12"	FOOT	127	127		
X78100100	RAISED REFLECTIVE PAVEMENT MARKER	EACH	7	7		
X78100105	RAISED REFLECTIVE PAVEMENT MARKER (BRIDGE)	EACH	6	6		
X78100300	REPLACEMENT REFLECTOR	EACH	7	7	△	
78300100	PAVEMENT MARKING REMOVAL	SQ FT	613	613		
78300200	RAISED REFLECTIVE PAVEMENT MARKER REMOVAL	EACH	20	20		
X0325305	STRUCTURAL REPAIR OF CONCRETE (DEPTH EQUAL TO OR LESS THAN 5 INCHES)	SQ FT	276	276		
X4066428	BITUMINOUS CONCRETE SURFACE COURSE, SUPERPAVE, MIX "D", N90	TON	46	46		
X4066775	LEVELING BINDER (MACHINE METHOD), SUPERPAVE N90	TON	33	33		
X7200200	WIDE LOAD SIGNING	L SUM	1	1		
Z0002600	BAR SPLICERS	EACH	234	234		
Z0030240	IMPACT ATTENUATORS, TEMPORARY (NON-REDIRECTIVE), TEST LEVEL 2	EACH	2		2	
Z0030255	IMPACT ATTENUATORS, TEMPORARY (FULLY REDIRECTIVE, NARROW), TEST LEVEL 2	EACH	1		1	
Z0030320	IMPACT ATTENUATORS, RELOCATE (FULLY REDIRECTIVE), TEST LEVEL 2	EACH	1		1	
Z0030340	IMPACT ATTENUATORS, RELOCATE (NON-REDIRECTIVE), TEST LEVEL 2	EACH	2		2	

PLOT DATE = 8/22/2006
 PLOT SCALE = 1" = 40' (PLAN)
 PLOT SCALE = 1" = 10' (SECTION)
 REFERENCE = PREP

* SPECIALTY ITEMS △

Rev. 10-16-06 Rev.

F.A.P. RTE.	SECTION	COUNTY	TOTAL SHEETS	SHEET NO.
600	1-1BR-1	ST. CLAIR	29	7
STA.		TO STA.		
FED. ROAD DIST. NO.		ILLINOIS FED. AID PROJECT		

PAVEMENT MARKING SCHEDULE

LOCATION	TEMPORARY PAVEMENT MARKING LINE - 4"				TEMPORARY PAVEMENT MARKING LINE - 12"	SHORT-TERM PAVEMENT MARKING	WORK ZONE PAVEMENT MARKING SQ FT	THERMOPLASTIC PAVEMENT MARKING -4"				THERMOPLASTIC PAVEMENT MARKING -12"		PAVEMENT MARKING REMOVAL					POLYUREA PAVEMENT MARKING TYPE I-LINE 4"	POLYUREA PAVEMENT MARKING TYPE I-LINE 12"	
	STAGE I	STAGE II	STAGE III	FINAL				SOLID LINE	SKIP-DASH LANE LINE	SKIP-DASH LANE LINE	EDGE LINE WHITE	YELLOW	WHITE	4" YELLOW	4" WHITE	EDGE LINE	SOLID 12"	YELLOW			WHITE
	FOOT	FOOT	FOOT	FOOT				FOOT	FOOT	FOOT	FOOT	FOOT	FOOT	SQ FT	SQ FT	SQ FT	SQ FT	SQ FT			SQ FT
STA 154+02.0 TO STA 156+50.0	248.0		203.0	226.0	62.5	12	292.3			11.0	215		62.5			3.7	71.8		62.5		
STA 156+50.0 TO STA 157+00.0	50.0	100.0	100.0	163.5	25.5	20	170.0	100.0		13.5	50.0		25.5	33.3		4.5	16.7		25.5		
STA 157+00.0 TO STA 157+21.0	21.0	42.0	42.0	69.3	14.4	36	76.5	42.0		6.3	21.0		14.4	14.0		2.1	7.0		14.4		
STA 157+21.0 TO STA 157+53.7		39.0	65.4	107.4	32.0	36	106.6	65.4		9.2	32.8		32.1	21.8		3.1	10.9		32.1		
STA 157+53.7 TO STA 158+62.5			217.6	546.5	127.3	36	394.1				1.5						36.9			545.0	127.0
STA 158+62.5 TO STA 158+85.0			45.0	65.6	26.9	36	67.8	45.0			20.6	7.7	19.2	15.0			6.9	7.7	19.2		
STA 158+85.0 TO STA 159+15.0	30.0		60.0	90.0	39.2	36	103.2	60.0			30.0	13.9	25.5	20.0			10.0	13.9	25.5		
STA 159+15.0 TO STA 160+05.0	141.0		328.0	293.9	28.2	24	290.5	183.9	20.0		90.0	28.2		61.3	6.7		30.0	28.2			
STA 160+05.0 TO STA 160+33.0	24.0		112.0	25.0		4	55.0				25.0						8.3				
SUB-TOTAL	514.0	181.0	1173.0	1587.0				496.3	20.0	39.9	485.9	49.8	179.2	165.4	6.7	13.4	198.5	49.8	179.2		
TOTAL		3455			356	240	1556				1042		229			613				545	127

STAGING SCHEDULE

LOCATION	TRAFFIC BARRIER TERMINAL, TYPE 11	TEMPORARY CONCRETE BARRIER	RELOCATE TEMPORARY CONCRETE BARRIER	TEMPORARY PAVEMENT MARKING LINE 6"	TEMPORARY BRIDGE RAIL	IMPACT ATTENUATOR, TEMPORARY (NON-REDIRECTIVE)	IMPACT ATTENUATOR, RELOCATE (NON-REDIRECTIVE)	IMPACT ATTENUATOR, TEMPORARY (FULLY-REDIRECTIVE)	IMPACT ATTENUATOR, RELOCATE (FULLY-REDIRECTIVE)
	EACH	FOOT	FOOT	FOOT	FOOT	EACH	EACH	EACH	EACH
STAGE I		500		500		2			
STAGE II	4	37.5	262.5	475	220		1	1 *	
STAGE III			75				1		1
TOTAL	4	537.5	337.5	975	220	2	2	1	1

* MAXIMUM WIDTH OF 2'-11" AND A MAXIMUM LENGTH OF 24'.

RESURFACING SCHEDULE

LOCATION	BITUMINOUS MATERIALS (PRIME COAT)	AGGREGATE (PRIME COAT)	BITUMINOUS SURFACE REMOVAL 1 1/2"	BITUMINOUS CONCRETE SURFACE COURSE, SUPERPAVE	LEVEL BINDER (MACHINE METHOD), SUPERPAVE
STATION TO STATION	TON	TON	SQ YD	TON	TON
STA 157+00.00 TO STA 157+53.70	0.1	0.5	286.8	24.1	17.3
BRIDGE OMISSION					
STA 158+62.80 TO STA 159+15.00	0.1	0.5	260.2	21.9	15.7
TOTAL	0.2	1	547	46	33

RAISED REFLECTIVE PAVEMENT MARKERS SCHEDULE

LOCATION	RAISED REFLECTIVE PAVEMENT MARKER		RAISED REFLECTIVE PAVEMENT MARKER (BRIDGE)	REPLACEMENT REFLECTOR		RAISED REFLECTIVE PAVEMENT MARKER REMOVAL
	2-WAY AMBER	WHITE		2-WAY AMBER	WHITE	
	EACH	EACH		EACH	EACH	
STA 154+02.0 TO STA 156+50.0				1	1	
STA 156+50.0 TO STA 157+00.0				1	1	2
STA 157+00.0 TO STA 157+21.0		1				1
STA 157+21.0 TO STA 157+53.7	2					2
STA 157+53.7 TO STA 158+62.5			6			6
STA 158+62.5 TO STA 158+85.0	2					2
STA 158+85.0 TO STA 159+15.0	2					2
STA 159+15.0 TO STA 160+05.0				4	4	
STA 160+05.0 TO STA 160+33.0						
SUB-TOTAL	6	1		5	2	
TOTAL		7	6	7	20	

SIDEWALK AND CURB & GUTTER SCHEDULE

LOCATION	SIDEWALK REMOVAL	PCC SIDEWALK 4 IN	COMBINATION CURB & GUTTER REMOVAL	COMBINATION CURB & GUTTER, TYPE B-6.24	INLETS TO BE ADJUSTED
STATION TO STATION	SQ FT	SQ FT	FT	FT	EACH
NORTHEAST QUADRANT					
STA 157+00.00 TO STA 157+51.00	328.6	328.6	51.0	51.0	
NORTHWEST QUADRANT					
STA 157+00.00 TO STA 157+57.70	358.2	358.2	58.0	57.8	
BRIDGE OMISSION					
SOUTHEAST QUADRANT					
STA 158+58.80 TO STA 159+15.00	315.4	315.4	56.5	56.3	1
SOUTHWEST QUADRANT					
STA 158+65.60 TO STA 159+15.00	287.8	287.8	49.5	49.4	1
TOTAL	1290	1290	215	214.5	2

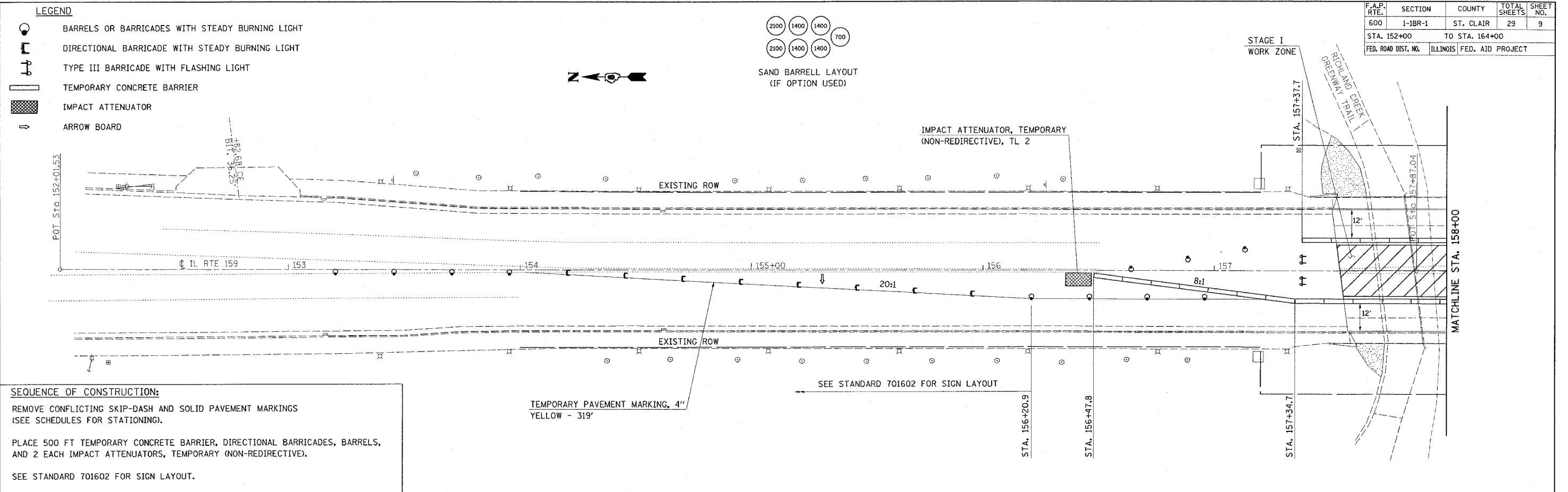
TEMPORARY RAMP SCHEDULE

LOCATION	WIDTH FOOT	LENGTH FOOT	TEMPORARY RAMP SQ YD
STA 157+00.0	48	5	26.8
STA 159+10.0	41.75	5	23.3
STA 157+41.6	48	12.1	64.7
STA 158+62.8	47.6	12.1	64.2
TOTAL			179

REVISIONS		ILLINOIS DEPARTMENT OF TRANSPORTATION SCHEDULES
NAME	DATE	
		FAP ROUTE 600 SECTION 1-1BR-1 ST. CLAIR COUNTY SCALE: VERT. / HORIZ. DATE DRAWN BY / CHECKED BY

Rev. 10-16-06

F.A.P. RTE.	SECTION	COUNTY	TOTAL SHEETS	SHEET NO.
600	1-1BR-1	ST. CLAIR	29	9
STA. 152+00 TO STA. 164+00				
FED. ROAD DIST. NO.		ILLINOIS	FED. AID PROJECT	



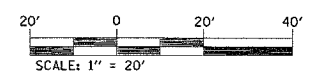
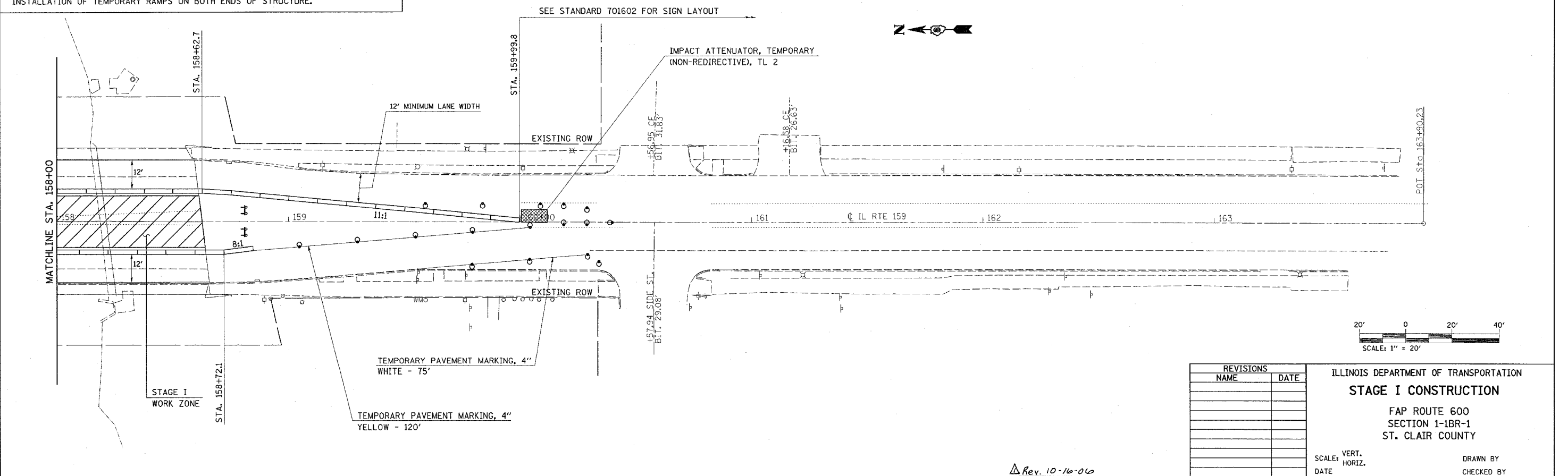
SEQUENCE OF CONSTRUCTION:

REMOVE CONFLICTING SKIP-DASH AND SOLID PAVEMENT MARKINGS (SEE SCHEDULES FOR STATIONING).

PLACE 500 FT TEMPORARY CONCRETE BARRIER, DIRECTIONAL BARRICADES, BARRELS, AND 2 EACH IMPACT ATTENUATORS, TEMPORARY (NON-REDIRECTIVE).

SEE STANDARD 701602 FOR SIGN LAYOUT.

PERFORM ALL NECESSARY BRIDGE WORK IN STAGE I WORK ZONE, INCLUDING INSTALLATION OF TEMPORARY RAMPS ON BOTH ENDS OF STRUCTURE.



REVISIONS	
NAME	DATE

ILLINOIS DEPARTMENT OF TRANSPORTATION

STAGE I CONSTRUCTION

FAP ROUTE 600
SECTION 1-1BR-1
ST. CLAIR COUNTY

SCALE: VERT. _____
HORIZ. _____

DATE _____ DRAWN BY _____
CHECKED BY _____

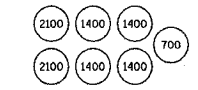
PLOT DATE = #DATE#
FILE NAME = #FILE#
PLOT SCALE = #SCALE#
USER NAME = #USER#

Rev. 10-16-06

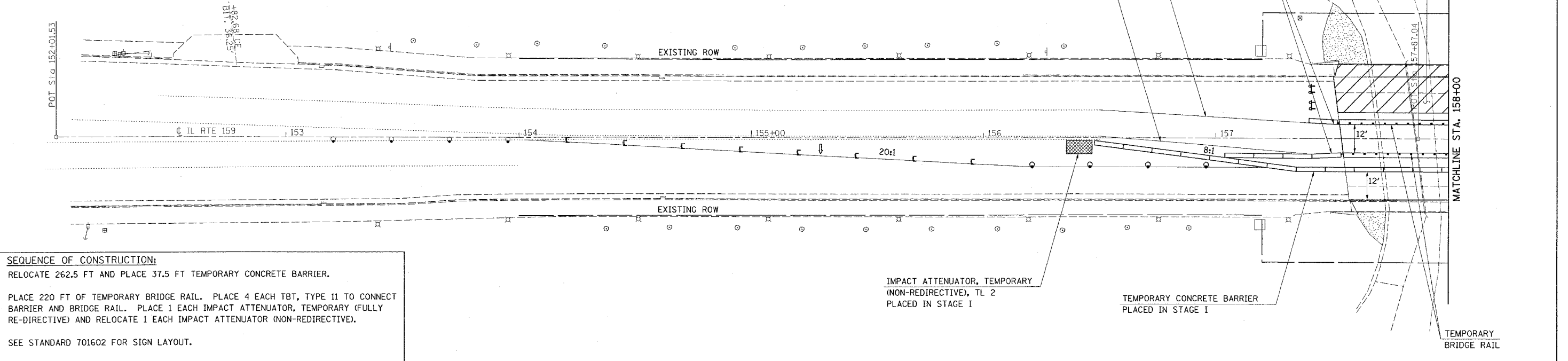
F.A.P. RTE.	SECTION	COUNTY	TOTAL SHEETS	SHEET NO.
600	1-1BR-1	ST. CLAIR	29	10
STA. 152+00 TO STA. 164+00				
FED. ROAD DIST. NO. ILLINOIS FED. AID PROJECT				

LEGEND

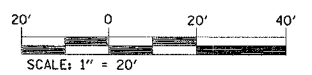
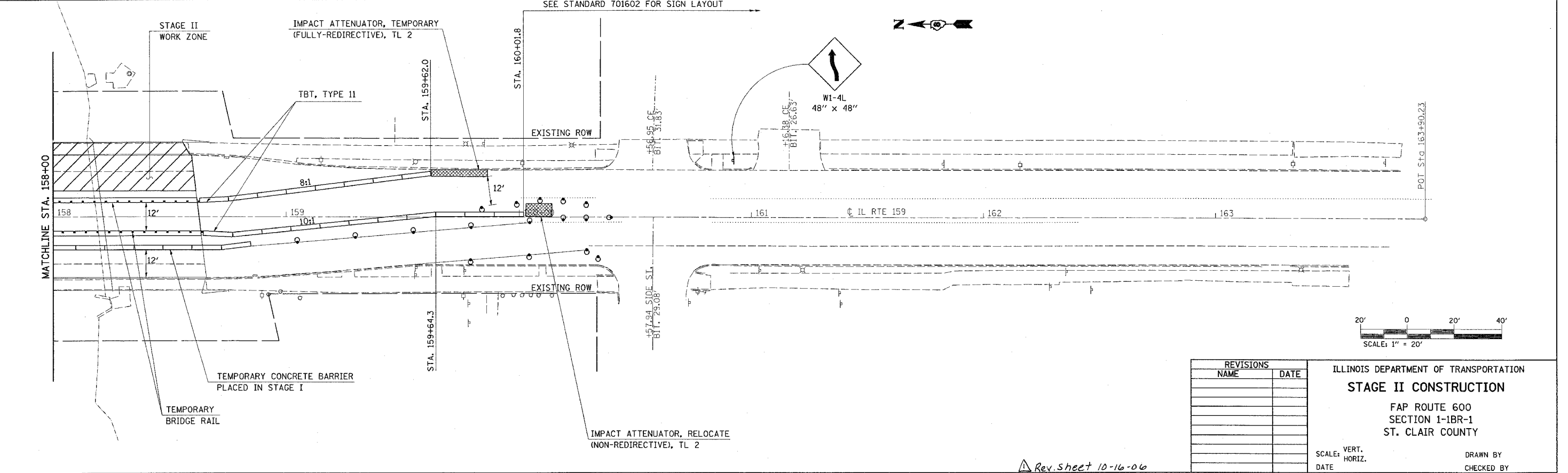
- BARRELS OR BARRICADES WITH STEADY BURNING LIGHT
- DIRECTIONAL BARRICADE WITH STEADY BURNING LIGHT
- TYPE III BARRICADE WITH FLASHING LIGHT
- TEMPORARY CONCRETE BARRIER
- IMPACT ATTENUATOR
- ARROW BOARD



SAND BARRELL LAYOUT (IF OPTION USED)



SEQUENCE OF CONSTRUCTION:
 RELOCATE 262.5 FT AND PLACE 37.5 FT TEMPORARY CONCRETE BARRIER.
 PLACE 220 FT OF TEMPORARY BRIDGE RAIL. PLACE 4 EACH TBT, TYPE 11 TO CONNECT BARRIER AND BRIDGE RAIL. PLACE 1 EACH IMPACT ATTENUATOR, TEMPORARY (FULLY RE-DIRECTIVE) AND RELOCATE 1 EACH IMPACT ATTENUATOR (NON-REDIRECTIVE).
 SEE STANDARD 701602 FOR SIGN LAYOUT.
 PERFORM ALL NECESSARY BRIDGE WORK IN STAGE II WORK ZONE, INCLUDING INSTALLATION OF TEMPORARY RAMPS ON BOTH ENDS OF STRUCTURE.



REVISIONS	
NAME	DATE

ILLINOIS DEPARTMENT OF TRANSPORTATION
STAGE II CONSTRUCTION
 FAP ROUTE 600
 SECTION 1-1BR-1
 ST. CLAIR COUNTY

SCALE: VERT. DATE
 HORIZ. DRAWN BY
 CHECKED BY

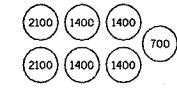
PLOT DATE = #DATE#
 PLOT SCALE = #SCALE#
 USER NAME = #USER#

Rev. Sheet 10-16-06

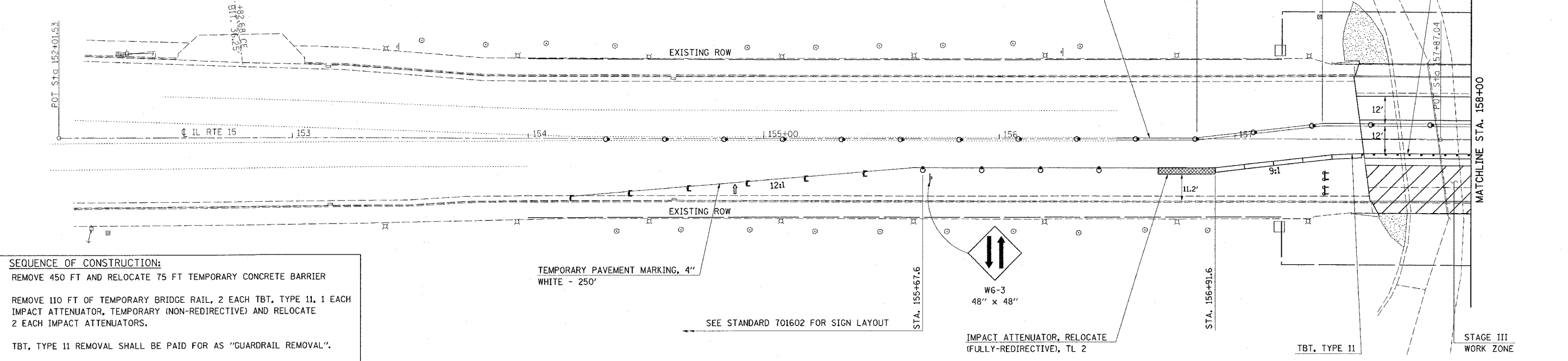
F.A.P. RTE.	SECTION	COUNTY	TOTAL SHEETS	SHEET NO.
600	1-1BR-1	ST. CLAIR	29	11
STA. 152+00		TO STA. 164+00		
FED. ROAD DIST. NO.		ILLINOIS FED. AID PROJECT		

LEGEND

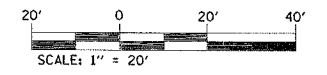
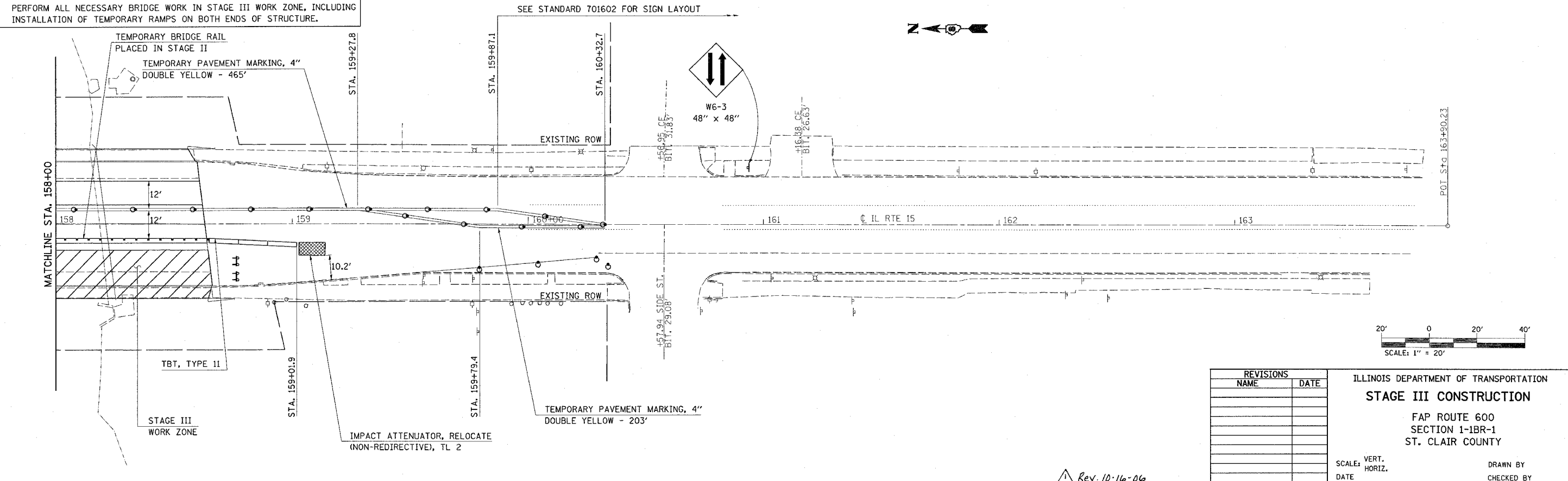
- BARRELS OR BARRICADES WITH STEADY BURNING LIGHT
- DIRECTIONAL BARRICADE WITH STEADY BURNING LIGHT
- TYPE III BARRICADE WITH FLASHING LIGHT
- TEMPORARY CONCRETE BARRIER
- IMPACT ATTENUATOR
- ARROW BOARD



SAND BARRELL LAYOUT (IF OPTION USED)



SEQUENCE OF CONSTRUCTION:
 REMOVE 450 FT AND RELOCATE 75 FT TEMPORARY CONCRETE BARRIER
 REMOVE 110 FT OF TEMPORARY BRIDGE RAIL, 2 EACH TBT, TYPE 11, 1 EACH IMPACT ATTENUATOR, TEMPORARY (NON-REDIRECTIVE) AND RELOCATE 2 EACH IMPACT ATTENUATORS.
 TBT, TYPE 11 REMOVAL SHALL BE PAID FOR AS "GUARDRAIL REMOVAL".
 SEE STANDARD 701602 FOR SIGN LAYOUT.
 PERFORM ALL NECESSARY BRIDGE WORK IN STAGE III WORK ZONE, INCLUDING INSTALLATION OF TEMPORARY RAMPS ON BOTH ENDS OF STRUCTURE.



REVISIONS	
NAME	DATE

ILLINOIS DEPARTMENT OF TRANSPORTATION
STAGE III CONSTRUCTION
 FAP ROUTE 600
 SECTION 1-1BR-1
 ST. CLAIR COUNTY

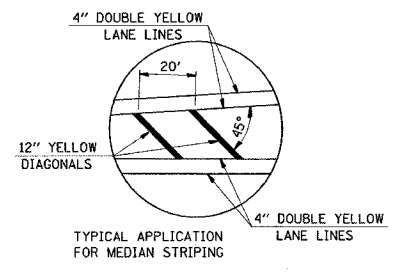
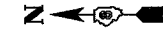
SCALE: VERT. _____
 DATE _____ HORIZ. _____

DRAWN BY _____
 CHECKED BY _____

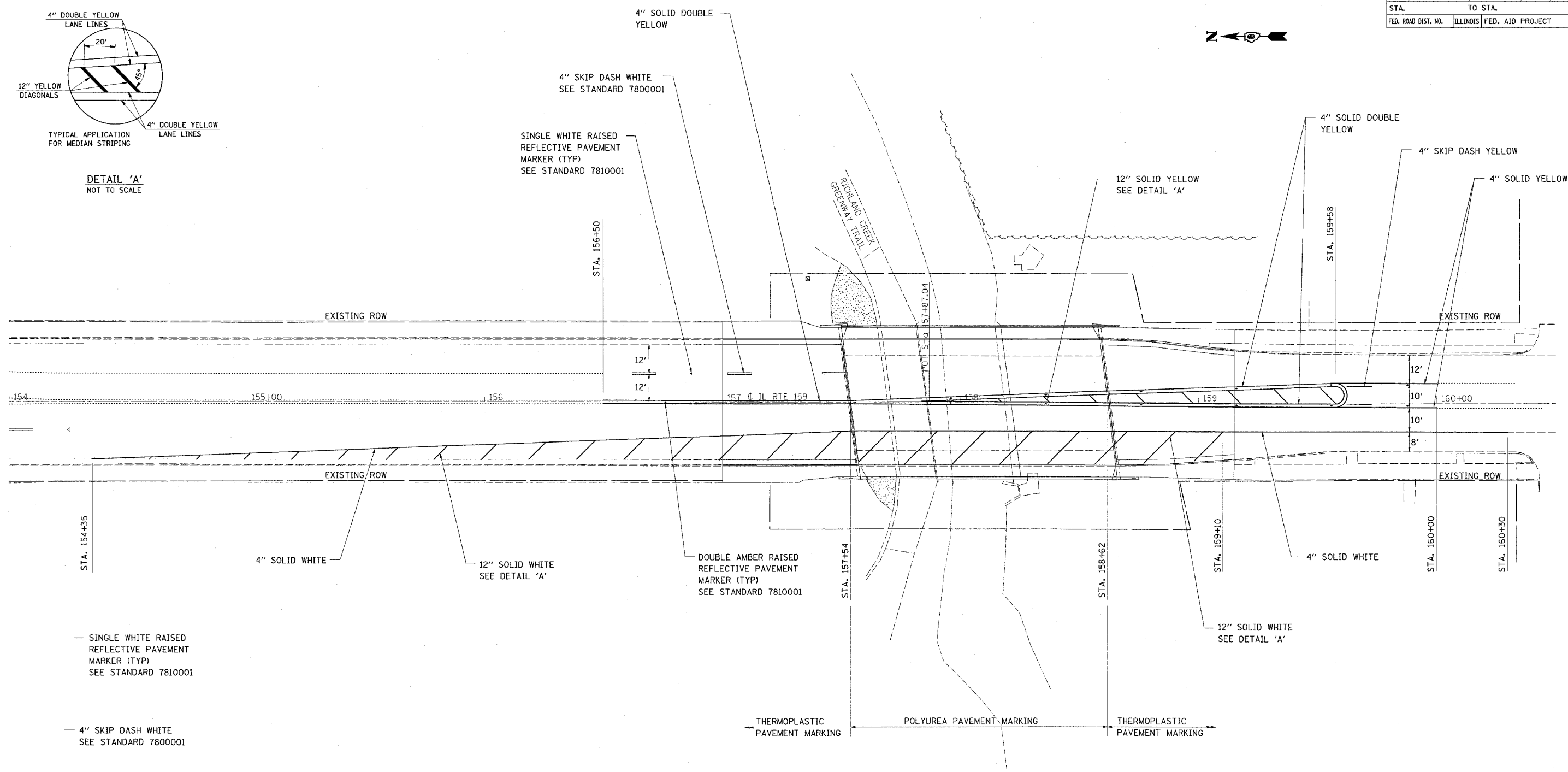
PLOT DATE = 04/06
 FILE NAME = 041616
 USER NAME = MUSEY

Rev. 10-16-06

F.A.P. RTE.	SECTION	COUNTY	TOTAL SHEETS	SHEET NO.
600	1-1BR-1	ST. CLAIR	29	12
STA.		TO STA.		
FED. ROAD DIST. NO.		ILLINOIS FED. AID PROJECT		

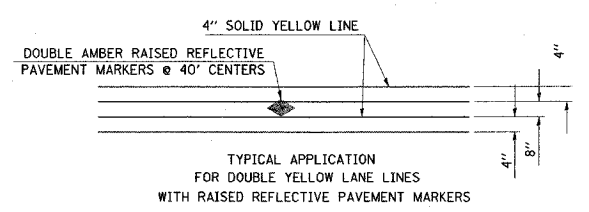


DETAIL 'A'
NOT TO SCALE

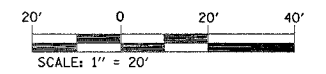


— SINGLE WHITE RAISED REFLECTIVE PAVEMENT MARKER (TYP) SEE STANDARD 7810001

— 4" SKIP DASH WHITE SEE STANDARD 7800001



DETAIL 'B'



PLOT DATE = 10/11/2006
FILE NAME = c:\p\projects\aed\0205\plan\p10306a.dgn
PLOT SCALE = 20.00000 / IN.
REFERENCE = REF#

Rev. 10-16-06

REVISIONS	
NAME	DATE

ILLINOIS DEPARTMENT OF TRANSPORTATION
PAVEMENT MARKING
FAP ROUTE 600
SECTION 1-1BR-1
ST. CLAIR COUNTY

SCALE: VERT. DATE
HORIZ.

DRAWN BY
CHECKED BY