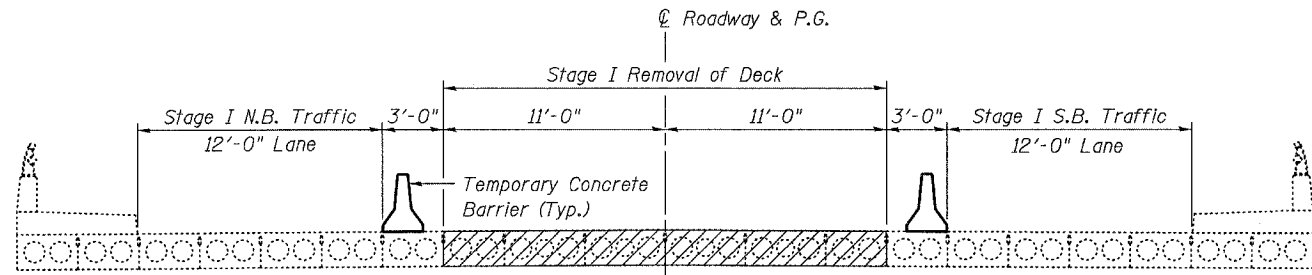


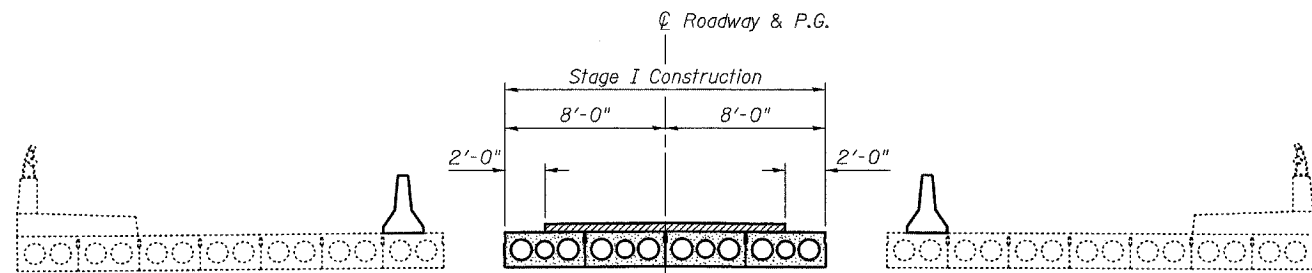
STATE OF ILLINOIS
DEPARTMENT OF TRANSPORTATION

ROUTE NO.	SECTION	COUNTY	TOTAL SHEETS	SHEET NO.	SHEET
FAP 600	1-1BR-1	ST. CLAIR	29	16	13 SHEETS
FED. ROAD DIST. NO. 7	ILLINOIS	FED. AID PROJECT			

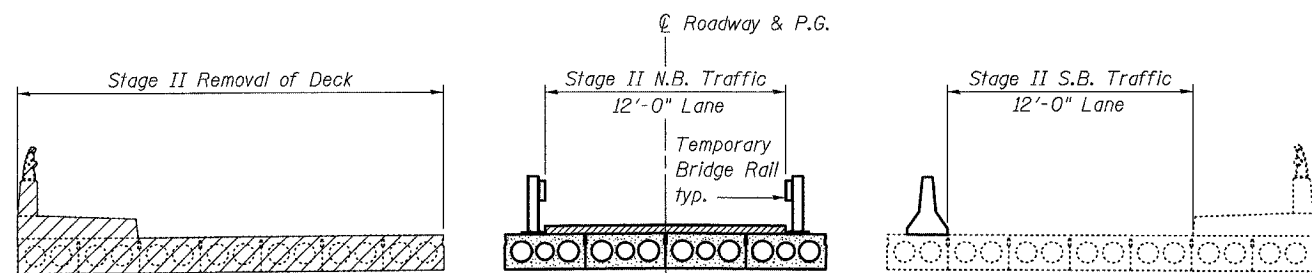
Contract # 76962



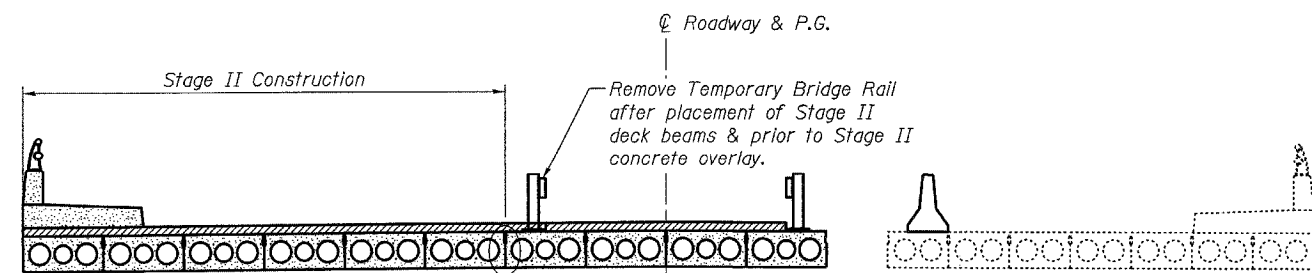
STAGE I REMOVAL
(Looking South)



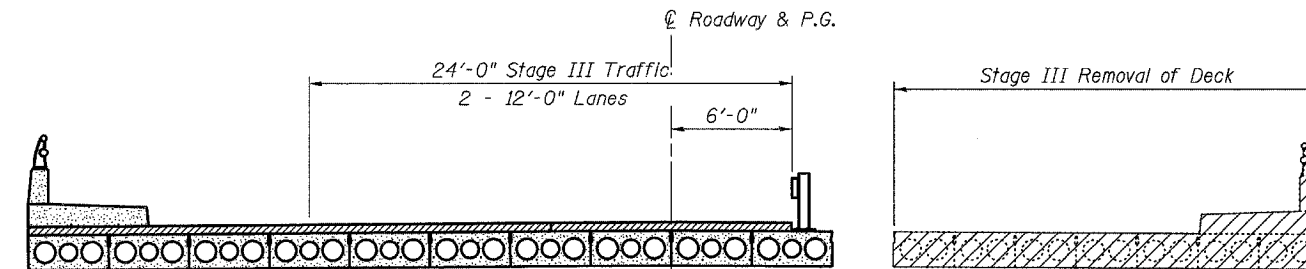
STAGE I CONSTRUCTION
(Looking South)



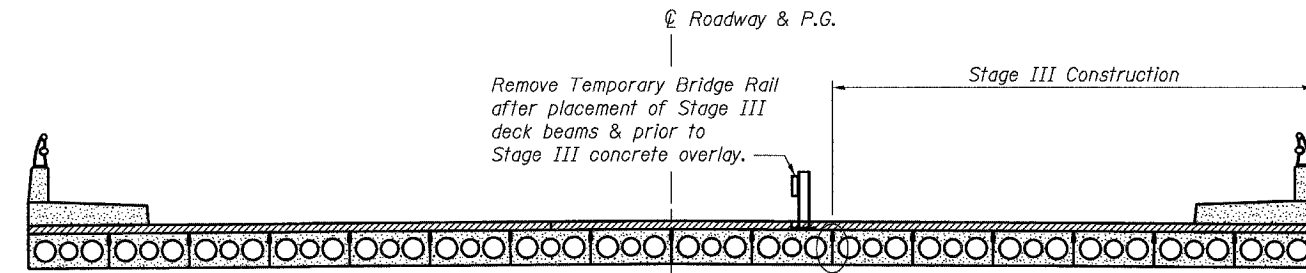
STAGE II REMOVAL
(Looking South)



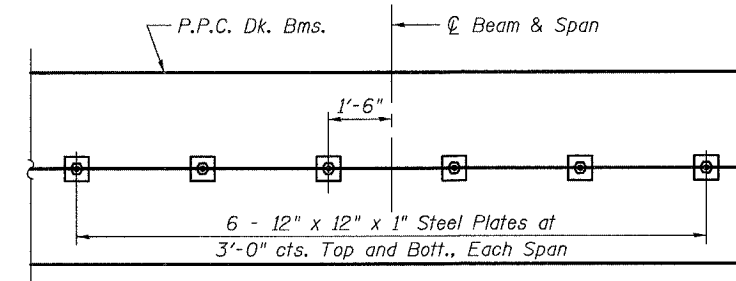
STAGE II CONSTRUCTION
(Looking South)



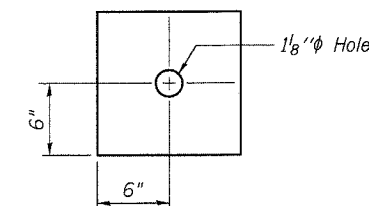
STAGE III REMOVAL
(Looking South)



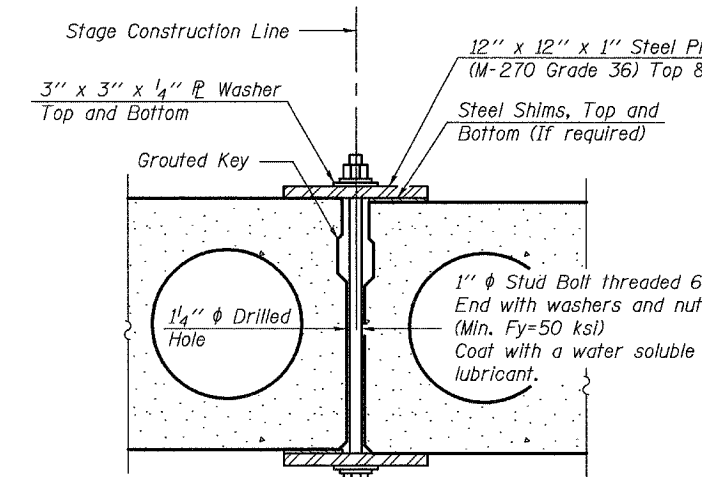
STAGE III CONSTRUCTION
(Looking South)



PLAN



CLAMPING PLATE



SECTION

SHEAR KEY CLAMPING DETAILS AT STAGE CONST. JT.

Notes:

- ① For quantity of Temporary Concrete Barrier, see roadway plans.
- ② For details of Temporary Bridge Rail, see sheet 4 of 13.
- ③ For details of Temporary Concrete Barrier, see sheet 3 of 13.
- ④ See Special Provisions for Stage Construction Precast Prestressed Concrete Deck Beams.
- ⑤ Cost of shear key clamps is included with Precast Prestressed Concrete Deck Beams (17" Depth).

STAGE CONSTRUCTION DETAILS
IL ROUTE 159 OVER RICHLAND CREEK
F.A.P. ROUTE 600 - SECTION 1-1BR-
ST. CLAIR COUNTY
STA. 158+08
STRUCTURE NO. 082-0265

PLOT DATE = #DATE#
FILE NAME = #FILE#
PLOT SCALE = #SCALE#
USER NAME = #USER#