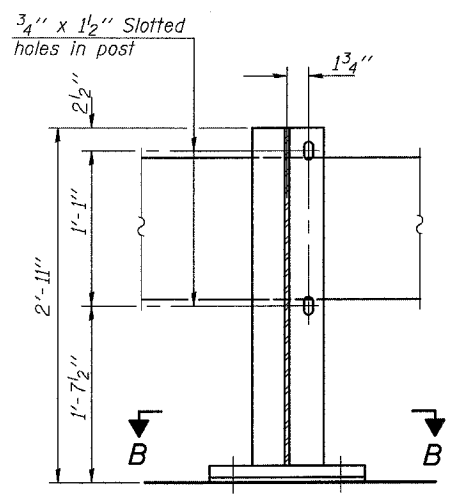
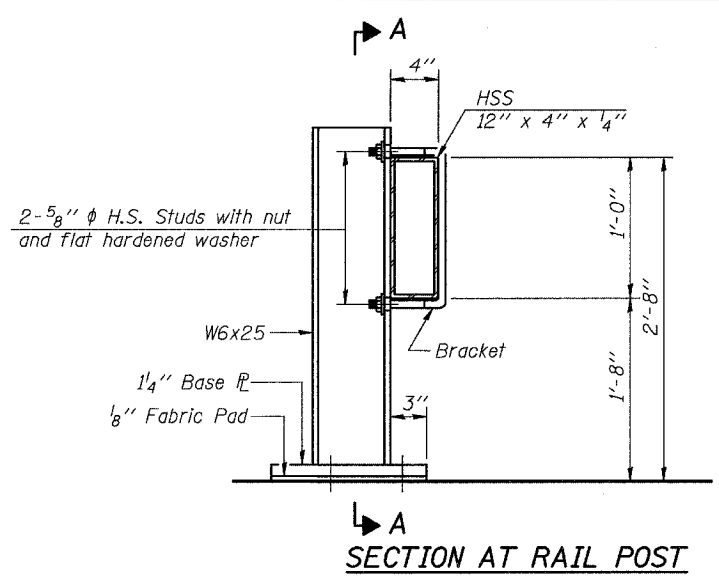


Contract # 76962

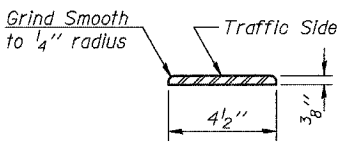
STATE OF ILLINOIS
DEPARTMENT OF TRANSPORTATION



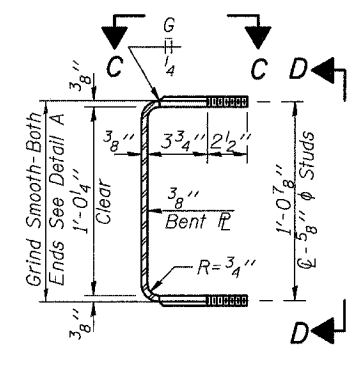
SECTION A-A



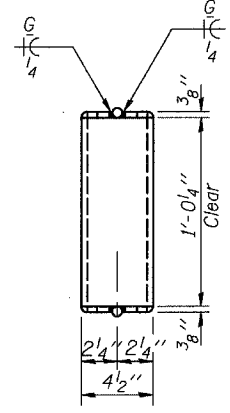
SECTION AT RAIL POST



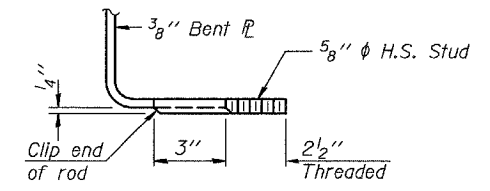
DETAIL A



SECTION THRU BRACKET



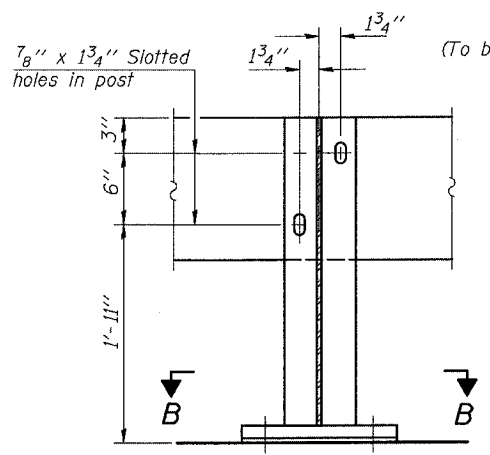
VIEW D-D



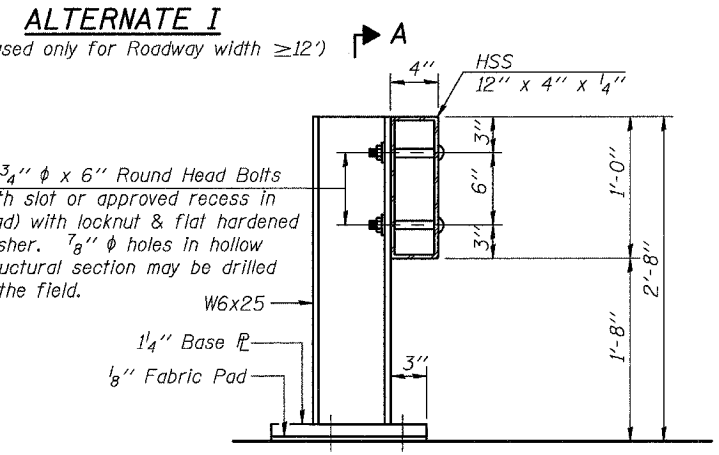
VIEW E-E

NOTES

Hollow structural sections shall conform to the requirements of ASTM designation A 500 Grade B Structural Steel Tubing. All other steel shapes and plates shall conform to the requirements of AASHTO M 270 Grade 36 except posts and brackets shall conform to AASHTO M 270, Grade 50. Bolts, cap screws, and nuts shall conform to the requirements of ASTM designation A 307 except for high strength bolts, threaded studs, nuts and washers noted which shall conform to AASHTO M 270. The bridge rail shall receive one shop coat of a steel prime paint. The 1" high strength bolts or threaded rods used to connect railposts shall be tightened according to Article 505.04(f)(2) of the Standard Specifications. Temporary Bridge Rail shall be according to Section 514 of the Standard Specifications, except as noted, and will be paid for at contract unit price per foot for Temporary Bridge Rail. The contact surfaces between post flange, rail and inside face bracket for Alternate I shall be free of all lubricants. The nut for 5/8" high strength studs used in Alternate I to connect bracket to post shall be tightened to a snug fit and given an additional half turn.

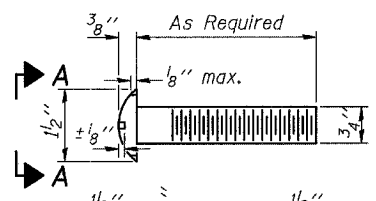


SECTION A-A

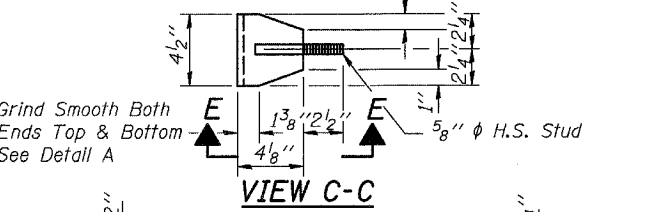


SECTION AT RAIL POST

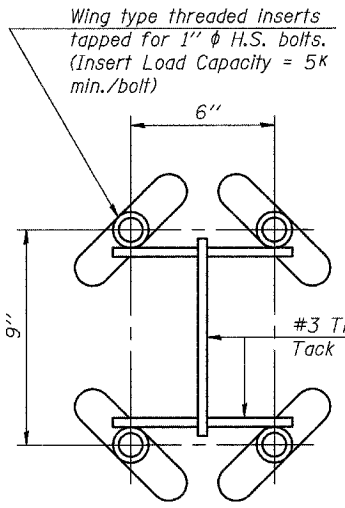
ALTERNATE I
(To be used only for Roadway width ≥ 12')



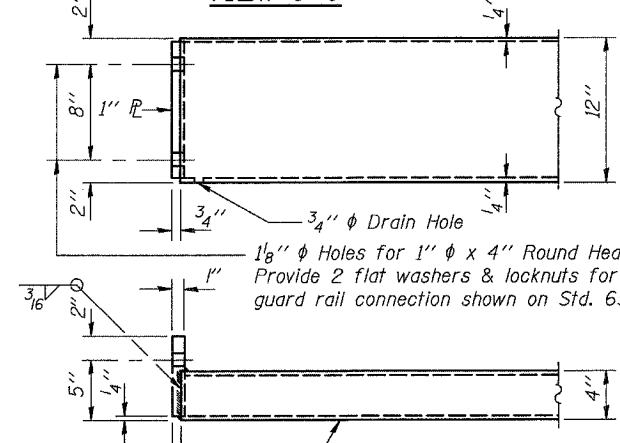
VIEW A-A
ROUND HEAD BOLT



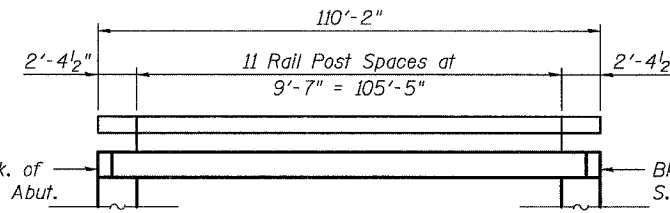
VIEW C-C



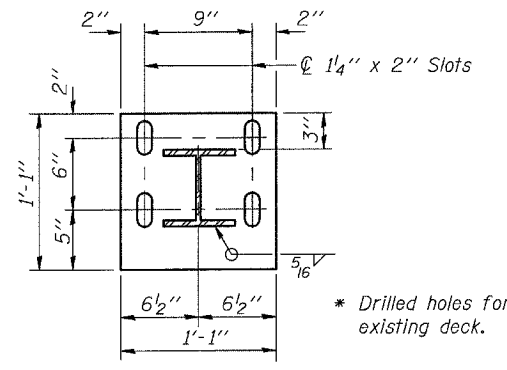
INSERT DETAIL



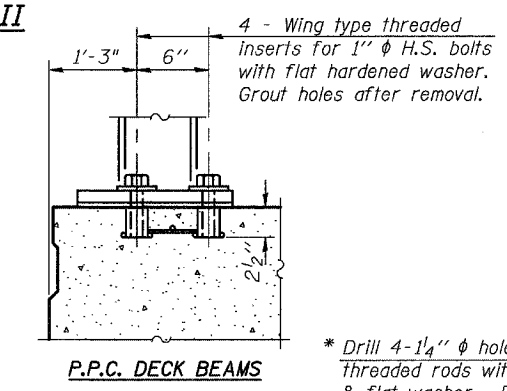
END OF RAIL DETAILS



TEMPORARY BRIDGE RAIL POST SPACING



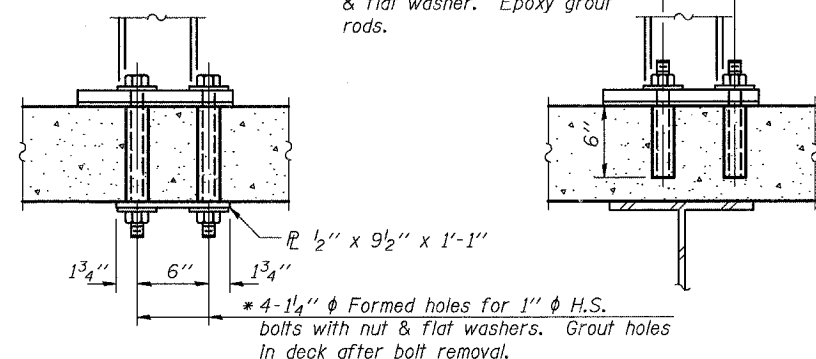
SECTION B-B



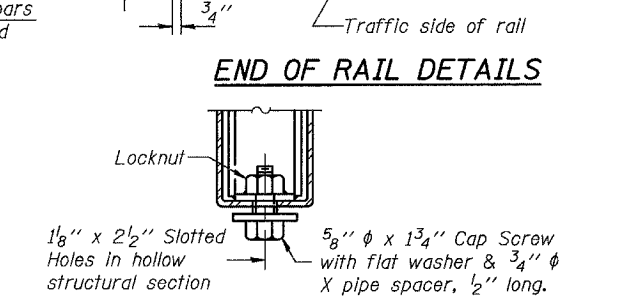
P.P.C. DECK BEAMS

* Drilled holes for existing deck.

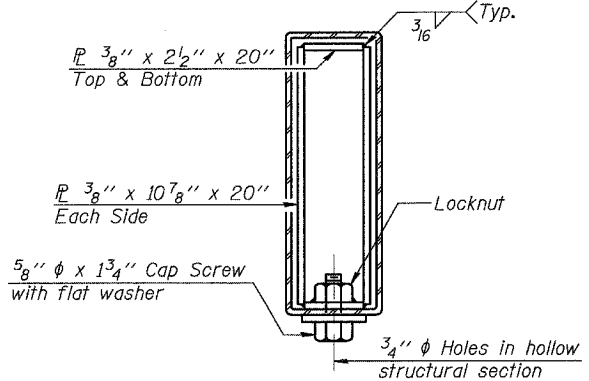
* Drill 4-1 1/4" φ holes for 1" φ threaded rods with hex nut & flat washer. Epoxy grout rods.



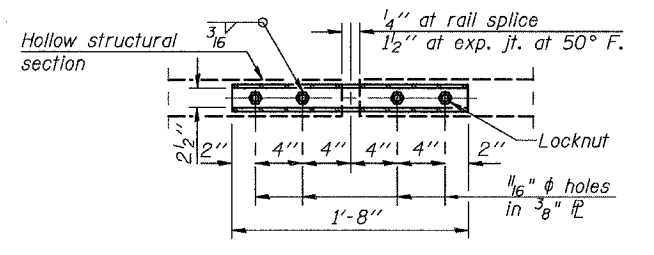
ANCHORAGE DETAILS



RAIL SPLICE CONNECTION
AT EXPANSION JT.



SECTION AT RAIL SPLICE



PLAN-BOTT. SPLICE
TYPICAL

BILL OF MATERIAL

Item	Unit	Quantity
Temporary Bridge Rail	Foot	220

TEMPORARY BRIDGE RAIL
IL ROUTE 159 OVER RICHLAND CREEK
F.A.P. ROUTE 600 - SECTION 1-1BR-1
ST. CLAIR COUNTY
STA. 158+08
STRUCTURE NO. 082-0265

DATE: 10/1/88
FILE: 10/1/88
SCALE: 1/8" = 1'-0"
USER: JWB

(10'-9" Maximum Post Spacing)