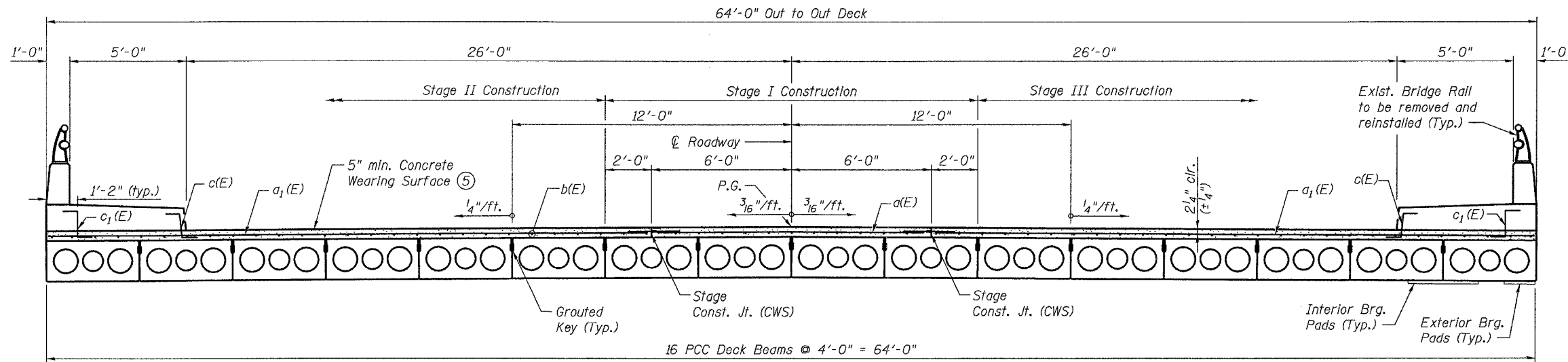


STATE OF ILLINOIS
DEPARTMENT OF TRANSPORTATION

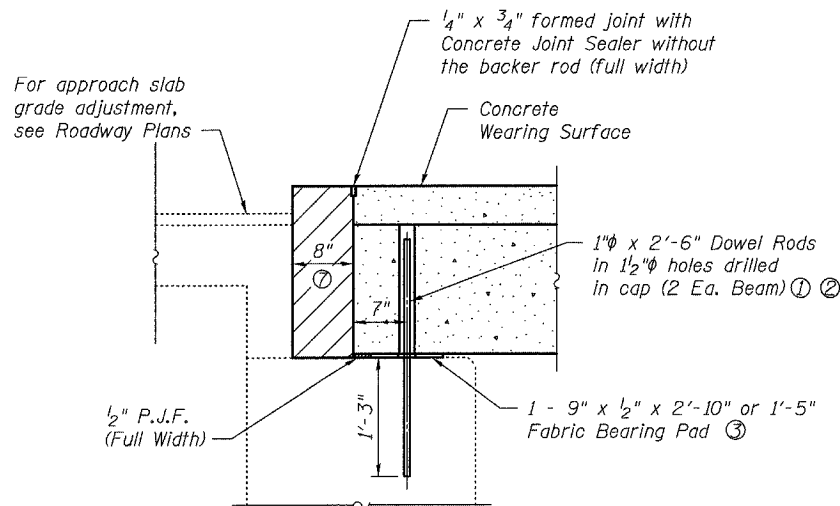
ROUTE NO.	SECTION	COUNTY	SHEET NO.	SHEET
FAP 600	1-1BR-1	ST. CLAIR	29	19
FED. ROAD DIST. NO. 7	ILLINOIS	FED. AID PROJECT-		

Contract #76962



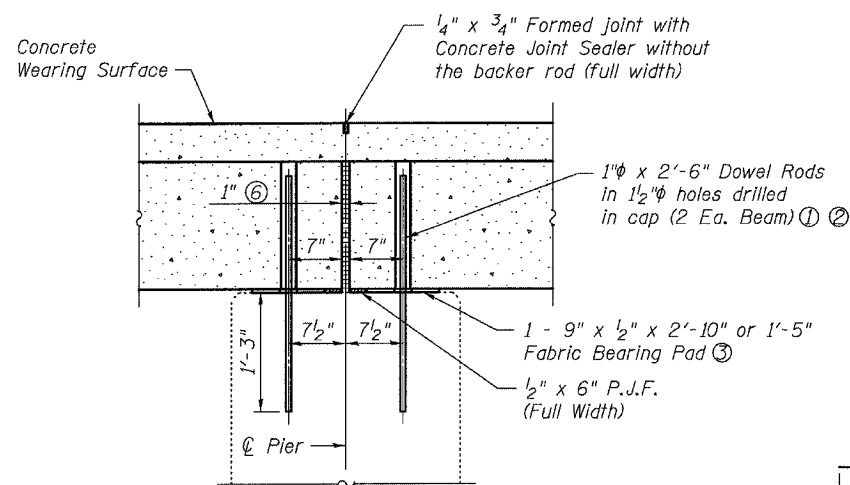
Notes:

- After beams have been erected, holes shall be drilled into substructure and anchor dowels placed. Dowel holes shall be filled with non-shrink grout to top of beam and allowed to cure min. 24 hrs. prior to grouting the shear keys.
- Dowel rods drilled in cap are included in the cost of Precast Prestressed Concrete Deck Beams (17" depth).
- See sheet 7 of 13 for bearing pad details.
- Reinforcement bars designated (E) shall be epoxy coated.
- Concrete wearing surface to be poured after grouting the shear keys.
- 1" Jt. shall be filled with non-shrink grout. 1" dimension may vary to accommodate tolerance in beam lengths.
- Hatched area to be poured after Concrete Wearing Surface is in place. Pour to match overlay cross-slope. See sheet 9 of 13 for details and reinforcing.
- Bars indicated thus 27x4 - #4 etc. indicates 27 lines of bars with 4 lengths per line.
- Temporary Bridge Rail inserts shall be cast into PPC Deck Beams. See sheet 4 of 13 for location of rail anchors.
- Min. lap length #4 - 1'-8"



SECTION THRU ABUTMENT

(Dimensions at right L's to beam ends)

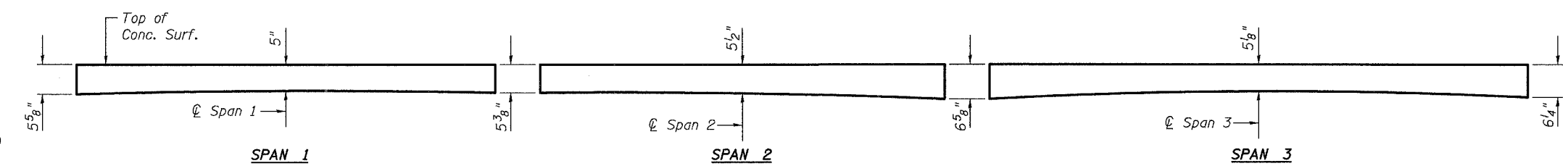


SECTION THRU PIER

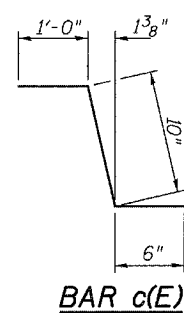
(Dimensions at right L's to beam ends)

CROSS SECTION

(Looking South)



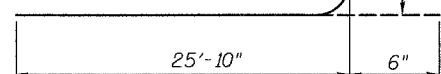
REINFORCED CONCRETE WEARING SURFACE PROFILE



BAR c(E)

BAR c1(E)

BAR a1(E)



CONCRETE OVERLAY PARTIAL PLAN

(PPC Deck Beams, Sidewalk, and Parapet not shown for clarity.)

SUPERSTRUCTURE BILL OF MATERIALS

Bar	No.	Size	Length	Shape
a(E)	109	#4	11'-9"	—
a1(E)	218	#4	26'-4"	—
b(E)	268	#4	28'-3"	—
b1(E)	32	#5	32'-3"	—
b2(E)	16	#5	42'-0"	—
c(E)	218	#6	2'-4"	—
c1(E)	218	#6	2'-4"	—
c2(E)	218	#5	5'-8"	—
d(E)	218	#4	3'-9"	L
d1(E)	218	#6	3'-1"	L
d2(E)	52	#4	2'-0"	—
e(E)	48	#4	16'-0"	—
e1(E)	36	#4	13'-9"	—
Concrete Superstructure			Cu. Yd.	53.7
Concrete Wearing Surface			Sq. Yd.	767
Reinforcement Bars, Epoxy Coated			Pound	16,810

SUPERSTRUCTURE DETAILS

IL ROUTE 159 OVER RICHLAND CREEK
F.A.P. ROUTE 600 - SECTION 1-1BR-1
ST. CLAIR COUNTY
STA. 158+08
STRUCTURE NO. 082-0265