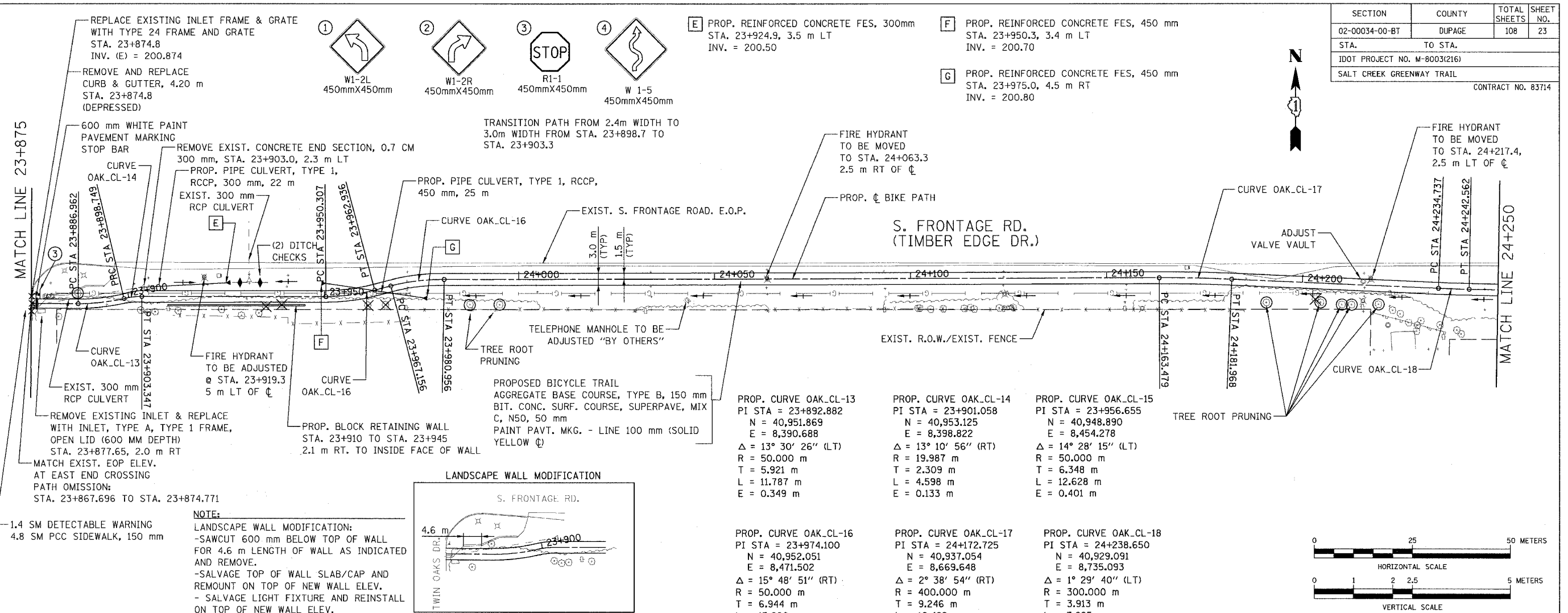
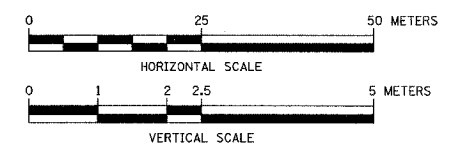


SECTION	COUNTY	TOTAL SHEETS	SHEET NO.
02-00034-00-BT	DUPAGE	108	23
STA. TO STA.			
IDOT PROJECT NO. M-8003(216)			
SALT CREEK GREENWAY TRAIL			
CONTRACT NO. 83714			

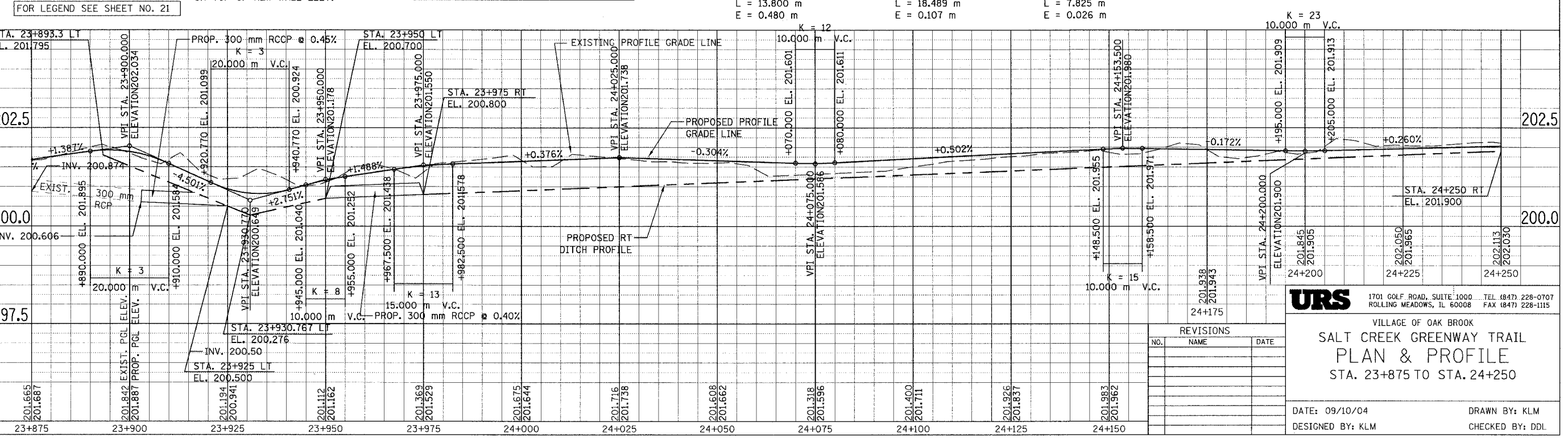
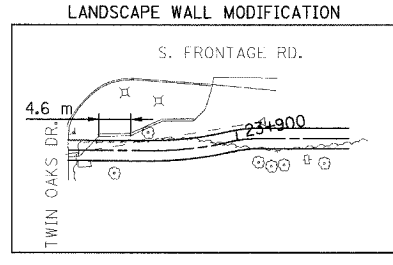


- E** PROP. REINFORCED CONCRETE FES, 300mm STA. 23+924.9, 3.5 m LT INV. = 200.50
- F** PROP. REINFORCED CONCRETE FES, 450 mm STA. 23+950.3, 3.4 m LT INV. = 200.70
- G** PROP. REINFORCED CONCRETE FES, 450 mm STA. 23+975.0, 4.5 m RT INV. = 200.80

- PROP. CURVE OAK_CL-13
PI STA = 23+892.882
N = 40,951.869
E = 8,390.688
Δ = 13° 30' 26" (LT)
R = 50,000 m
T = 5.921 m
L = 11.787 m
E = 0.349 m
- PROP. CURVE OAK_CL-14
PI STA = 23+901.058
N = 40,953.125
E = 8,398.822
Δ = 13° 10' 56" (RT)
R = 19,987 m
T = 2.309 m
L = 4.598 m
E = 0.133 m
- PROP. CURVE OAK_CL-15
PI STA = 23+956.655
N = 40,948.890
E = 8,454.278
Δ = 14° 28' 15" (LT)
R = 50,000 m
T = 6.348 m
L = 12.628 m
E = 0.401 m
- PROP. CURVE OAK_CL-16
PI STA = 23+974.100
N = 40,952.051
E = 8,471.502
Δ = 15° 48' 51" (RT)
R = 50,000 m
T = 6.944 m
L = 13.800 m
E = 0.480 m
- PROP. CURVE OAK_CL-17
PI STA = 24+172.725
N = 40,937.054
E = 8,669.648
Δ = 2° 38' 54" (RT)
R = 400,000 m
T = 9.246 m
L = 18.489 m
E = 0.107 m
- PROP. CURVE OAK_CL-18
PI STA = 24+238.650
N = 40,929.091
E = 8,735.093
Δ = 1° 29' 40" (LT)
R = 300,000 m
T = 3.913 m
L = 7.825 m
E = 0.026 m



NOTE:
LANDSCAPE WALL MODIFICATION:
-SAWCUT 600 mm BELOW TOP OF WALL FOR 4.6 m LENGTH OF WALL AS INDICATED AND REMOVE.
-SALVAGE TOP OF WALL SLAB/CAP AND REMOUNT ON TOP OF NEW WALL ELEV.
-SALVAGE LIGHT FIXTURE AND REINSTALL ON TOP OF NEW WALL ELEV.



URS 1701 GOLF ROAD, SUITE 1000 TEL (847) 228-0707
ROLLING MEADOWS, IL 60008 FAX (847) 228-1115

VILLAGE OF OAK BROOK
**SALT CREEK GREENWAY TRAIL
PLAN & PROFILE
STA. 23+875 TO STA. 24+250**

DATE: 09/10/04 DRAWN BY: KLM
DESIGNED BY: KLM CHECKED BY: DDL

REVISIONS		
NO.	NAME	DATE

FOR LEGEND SEE SHEET NO. 21