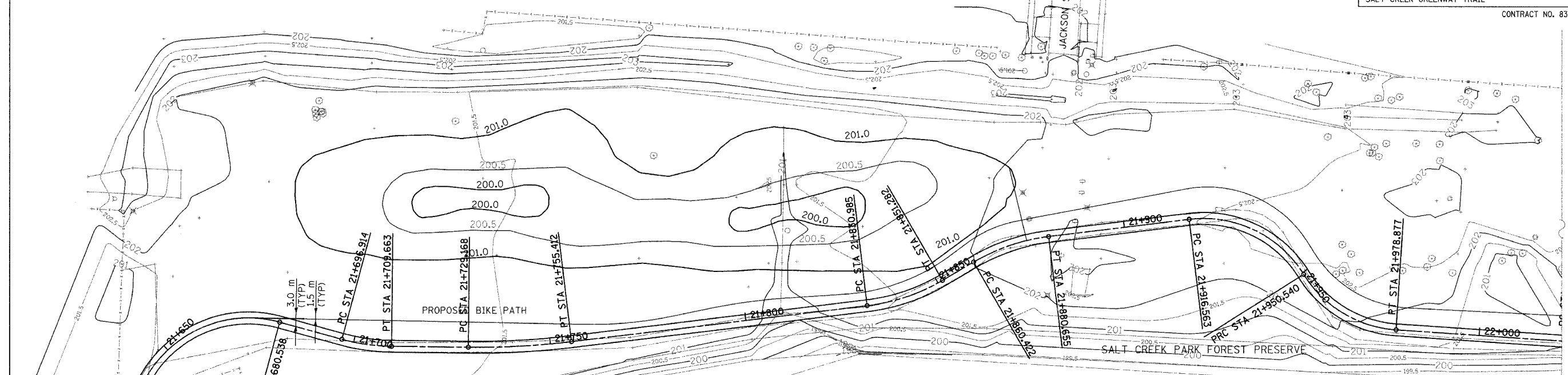
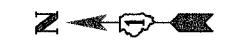


SECTION	COUNTY	TOTAL SHEETS	SHEET NO.
02-00034-00-BT	DUPAGE	108	31
STA. TO STA.			
IDOT PROJECT NO. M-8003(216)			
SALT CREEK GREENWAY TRAIL			
CONTRACT NO. 83714			

VILLAGE OF ELMHURST



SITE PREPARATION

EXISTING VEGETATION REMOVAL

1. PRIOR TO ANY GRADING WORK ALL SPECIES DEEMED UNDESIRABLE BY THE USACOE STAFF SHALL BE SPRAYED WITH THE APPROPRIATE HERBICIDE AND CUT/REMOVED FROM THE WETLAND MITIGATION SITES, IF PRESENT, BUCKHORN AND ANY OTHER NON-NATIVE OR UNDESIRABLE WOODY SPECIES SHALL BE REMOVED BY CUTTING. THE CUTTING OF THESE SPECIES SHALL BE AT GROUND LEVEL AND FOLLOWED BY APPLICATION OF 20% SOLUTION OF GARLON-4A IN PENTAVATOR BASE OIL TO THE FRESH STUMP.
2. ALL SITE HERBACEOUS VEGETATION SHALL BE SPRAYED WITH A 50% SOLUTION OF ROUNDUP OR PODEO PRIOR TO GRADING.
3. ALL HERBICIDE APPLICATION SHALL BE COMPLETED UNDER THE DIRECTION OF A LICENCED APPLICATOR WITH LICENCED OPERATORS.

SOIL PREPARATION

1. FOLLOWING HERBICIDE APPLICATION AND REMOVAL OF UNDESIRABLE VEGETATION THE SOIL SHALL BE PREPARED BY GRADING THE SITE TO A DEPTH OF 150mm - 300mm DEPTH. TOPSOIL SHOULD BE STRIPPED AND RESPREAD TO A DEPTH OF 150mm FOLLOWING GRADING.
2. NO OTHER CONSTRUCTION MACHINERY OR ACTIVITY SHALL OCCUR ON THE WETLAND MITIGATION SITE FOLLOWING GRADING AND RESPREADING OF TOPSOIL IN ORDER TO MINIMIZE SOIL COMPACTION.

EROSION CONTROL

1. THE WETLAND MITIGATION SITE SHALL BE PROTECTED BY THE PLACEMENT OF SILT/EROSION CONTROL FENCING AROUND THE PERIMETER OF THE SITES IN ACCORDANCE WITH THE ILLINOIS PROCEDURE AND STANDARDS FOR URBAN SOIL EROSION AND SEDIMENTATION CONTROL. EROSION AND SEDIMENTATION CONTROL MEASURES SHALL BE CONSISTENT WITH THE PRACTICE, STANDARDS, AND SPECIFICATIONS IN MANUAL.
2. EROSION CONTROL MEASURES SHALL BE IN PLACE AND MAINTAINED DURING THE ENTIRE PERIOD OF THE RESTORATION CONSTRUCTION.
3. WEEKLY EROSION CONTROL SITE INSPECTIONS SHALL BE PERFORMED DURING THE CONSTRUCTION PERIOD AND UNTIL THE SITE IS PERMANENTLY VEGETATED. IN ADDITION SITE INSPECTIONS MUST BE COMPLETED WITHIN 24 HOURS OF A SIGNIFICANT STORM EVENT (>1"). A COPY OF REPORTS SHALL BE SUBMITTED TO THE USACOE-CHICAGO DISTRICT ON A MONTHLY BASIS.

SEEDING/PLANTING PROCEDURES

1. THE SEEDING/PLANTING IN THE WETLAND MITIGATION SITE SHALL BE SET FORTH IN THIS DOCUMENT, AS INDICATED IN THE PLANS, OR AS DIRECTED BY THE USACOE STAFF.
2. THE RESTORATION SEEDING/PLANTING SHALL BE ACCOMPLISHED WITH THE SPECIES QUANTITIES SPECIFIED IN THE ACCOMPANYING LIST. PROPOSED SUBSTITUTIONS SHALL BE REVIEWED AND APPROVED BY THE USACOE IN WRITING PRIOR TO PLANTING.
3. SEED SOURCES SHALL BE WITHIN THE SPECIFIED RANGE OF 250 km OF THE SITE.
4. SEEDING IN THE WETLAND MITIGATION SITE SHALL BE HAND SPREAD OR BROADCAST AS SPECIFIED AT A RATE OF 33.6 KG/HA. THE SEED SHALL BE MIXED WITH A COVER CROP AS SPECIFIED AT A RATE OF 33.6 KG/HA. A UNIFORM DISTRIBUTION OF THE MIXTURE SHALL BE SOWN ON THE SITE.

WETLAND SPECIES LIST

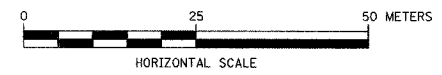
Scientific name	Common name	KG/HA
Asclepias inarnata	Swamp Milkweed	1.12
Aster novae-angliae	New England Aster	1.12
Carex aquatilis	Long-bracted Tussock Sedge	0.56
Carex cristatella	Crested Oval Sedge	0.56
Carex scopataria	Lance-fruited Oval Sedge	0.56
Carex stipata	Common Fox Sedge	1.12
Carex vulpinoidea	Brown Fox Sedge	1.12
Elymus virginicus	Virginia Wild Rye	5.6
Juncus effusus	Common Rush	0.56
Juncus torreyi	Torrey's Rush	0.56
Leersia oryzoides	Rice Cut Grass	5.6
Lobelia siphilitica	Great Blue Lobelia	1.12
Phlox glaberrima interior	Marsh Phlox	0.56
Rudbeckia laciniata	Wild Golden Glow	1.12
Rudbeckia triloba	Brown-eyed Susan	1.12
Scirpus atrovirens	Dark Green Rush	1.12
Scirpus validus	Great Bulrush	0.56
Silphium perfoliatum	Cup Plant	1.12
Solidago riddellii	Riddell's Goldenrod	0.56
Spartina pectinata	Prairie Cord Grass	5.6
Vernonia fasciculata	Common Ironweed	1.12
Veronicastrum virginicum	Culver's Root	0.56
Zizia aurea	Golden Alexander	0.56

Seeding Rate = 33.6 KG/HA

Cover Crop

Cover Crop	Seeding Rate	
Avena sativa	Oats	11.2
Lolium multiflorum	Annual Rye	11.2
Secal cereale	Winter Rye	11.2

Seeding Rate = 33.6 KG/HA



REVISIONS		
NO.	NAME	DATE

URS 1701 GOLF ROAD, SUITE 1000 TEL (847) 228-0707
ROLLING MEADOWS, IL 60008 FAX (847) 228-1115

VILLAGE OF OAK BROOK
SALT CREEK GREENWAY TRAIL
WETLAND MITIGATION PLAN

DATE: 7/20/05 DRAWN BY: MIA&VP
DESIGNED BY: MIA CHECKED BY: DDL