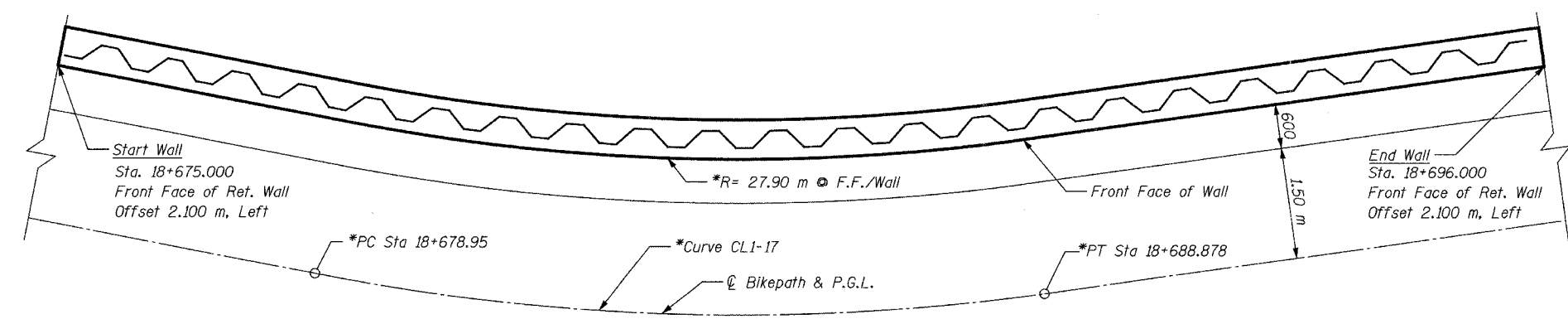
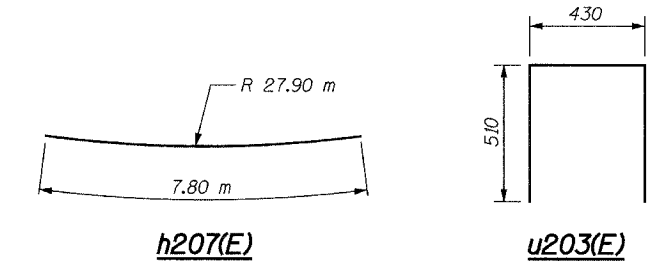
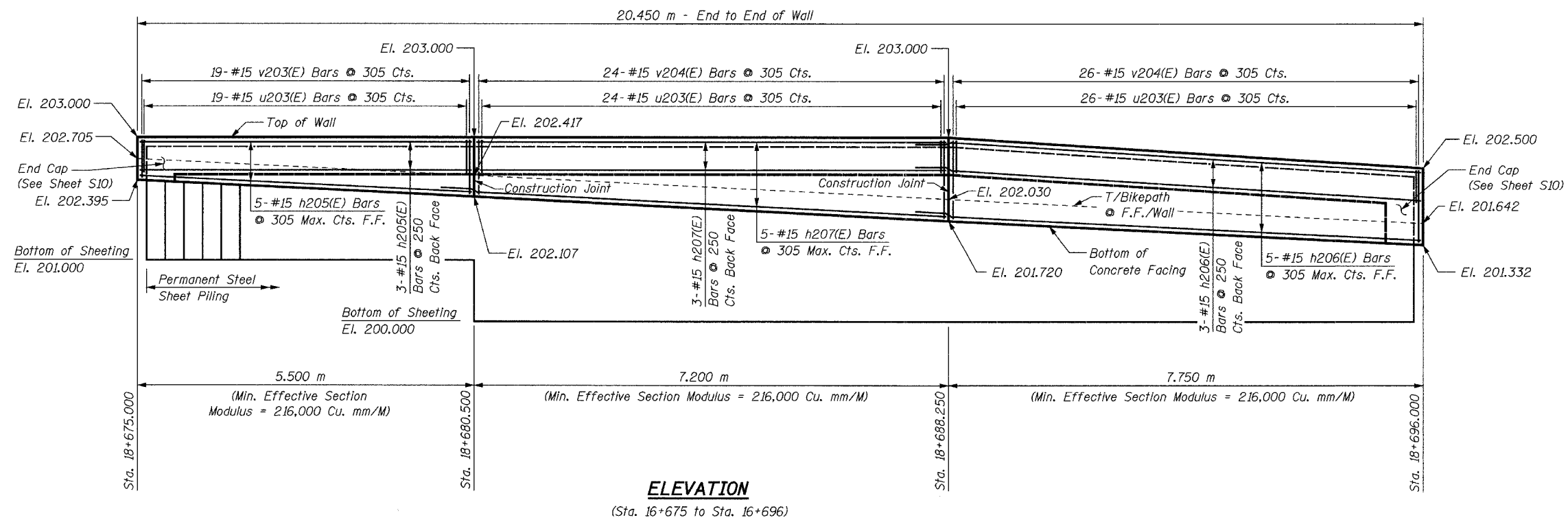


BILL OF MATERIAL

Bar	No.	Size	Length	Shape
h205(E)	8	#15	5.40 m	—
h206(E)	8	#15	8.40 m	—
h207(E)	8	#15	7.80 m	—
u203(E)	79	#15	1.45 m	⊏
v203(E)	21	#15	0.79 m	—
v204(E)	52	#15	1.18 m	—
Concrete Structures			Cu. M	9.0
Reinforcement Bars, Epoxy Coated			kg	580
Structure Excavation			Cu. M	11.5
Permanent Steel Sheet Piling			Sq. M	51
Pipe Handrail			Meter	21



PLAN
(Sta. 16+675 to Sta. 16+696)
(Reinforcement Omitted for Clarity)

***NOTE:**
For horizontal curve and alignment information, see Plan & Profile drawings.

NOTES:

- Cut h(E) and v(E) bars as necessary in field to fit.
- Minimum lap for #15 bar - 640 mm
- All exposed edges of concrete shall have a 20 mm chamfer unless shown otherwise.
- For minimum effective section modulus properties for sheet piling sections, refer to special provision for Permanent Steel Sheet Piling.
- Work this sheet with Sheet S6 thru S10.
- Bars designated (E) shall be epoxy coated.
- All dimensions are in millimeters (mm) except as noted.
- For Typical Section thru Wall, see Sheet S10.

SHEET S7 of S33

REVISIONS		NAME	DATE

URS

1701 GOLF ROAD, SUITE 1000
ROLLING MEADOWS, IL 60008

TEL (847) 228-0707
FAX (847) 228-1115

VILLAGE OF OAKBROOK

SALT CREEK GREENWAY TRAIL

RET. WALL STA. 18+665 TO 18+696

PLAN & ELEVATION

DATE: 06/30/05
DESIGNED BY: MDS

DRAWN BY: MDS
CHECKED BY: GAT