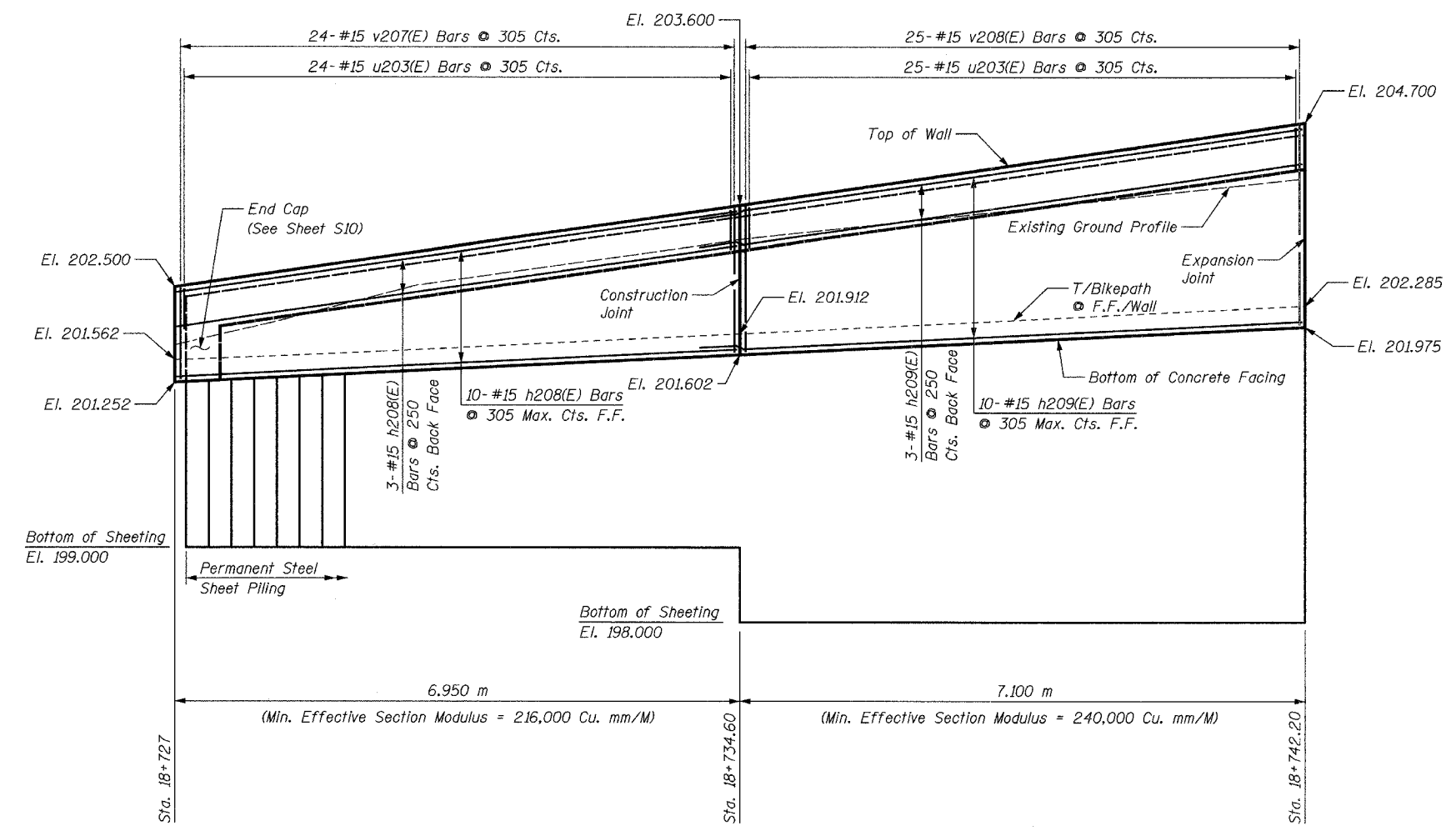
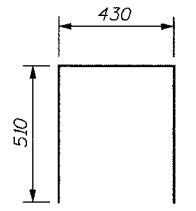
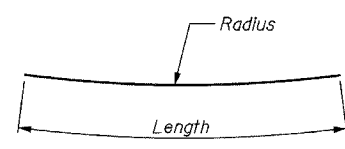


**BILL OF MATERIAL**

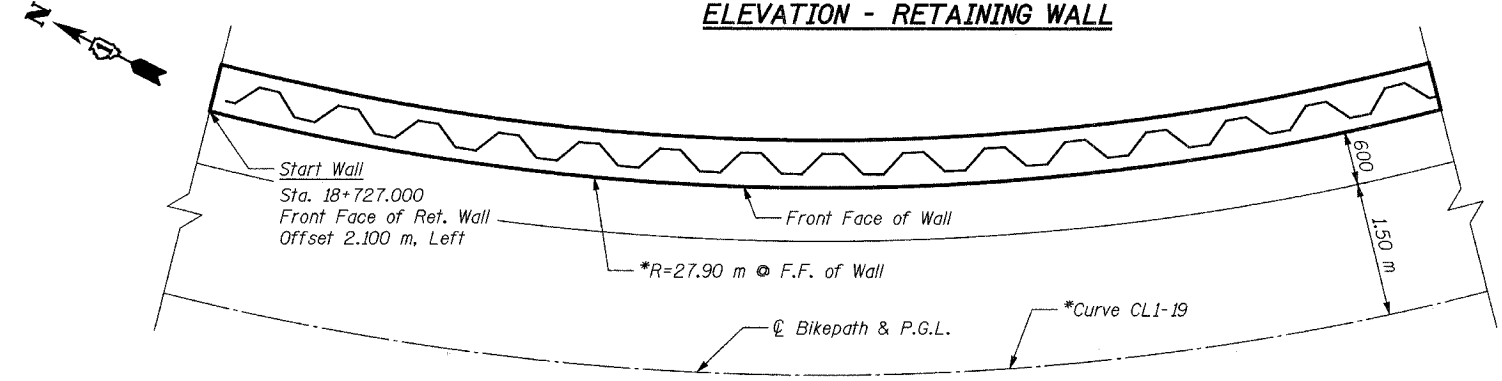
Bar	No.	Size	Length	Shape
h208(E)	13	#15	6.85 m	
h209(E)	13	#15	7.74 m	
u203(E)	59	#15	1.45 m	
v207(E)	24	#15	1.89 m	
v208(E)	25	#15	2.62 m	
Concrete Structures			Cu. M	9.6
Reinforcement Bars, Epoxy Coated			kg	610
Structure Excavation			Cu. M	7.9
Permanent Steel				
Sheet Piling			Sq. M	70
Pipe Handrail			Meter	14



Bar	Radius	Length
h208(E)	27.90 m	6.85 m
h209(E)	27.90 m	7.74 m



**ELEVATION - RETAINING WALL**



**PLAN - RETAINING WALL**

**\*NOTE:**

For horizontal curve and alignment information, see Plan & Profile drawings.

**NOTES:**

For Notes see Sheet S7.

SHEET S8 of S33

REVISIONS		NAME	DATE	<b>URS</b> 1701 GOLF ROAD, SUITE 1000 ROLLING MEADOWS, IL 60008 TEL (847) 228-0707 FAX (847) 228-1115
NO.	DESCRIPTION			
				<b>VILLAGE OF OAKBROOK</b> <b>SALT CREEK GREENWAY TRAIL</b> <b>RET. WALL STA. 18+727 TO 18+742.2</b> <b>PLAN &amp; ELEVATION</b>
DATE: 06/30/05		DESIGNED BY: MDS		DRAWN BY: MDS CHECKED BY: GAT