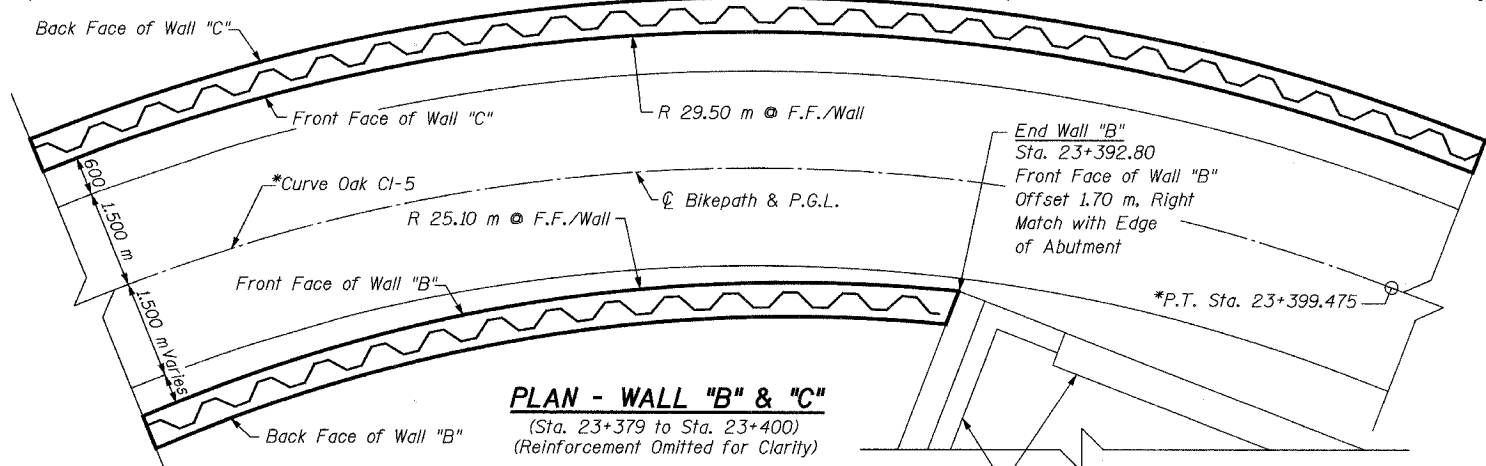
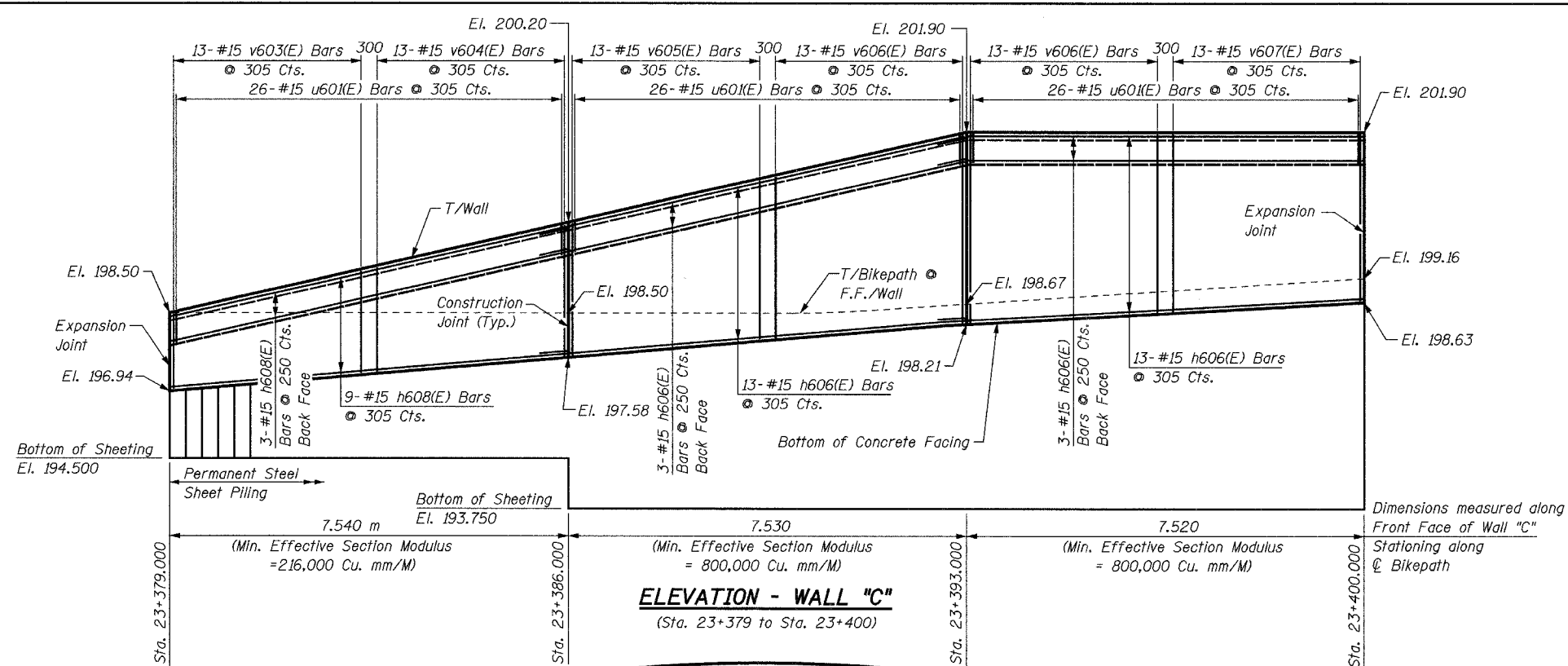
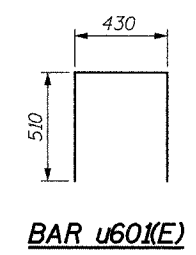


BILL OF MATERIAL

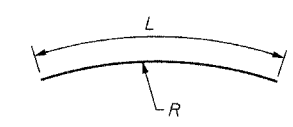
Bar	No.	Size	Length	Shape
h606(E)	32	#15	8.02 m	—
h608(E)	12	#15	7.44 m	—
h609(E)	8	#15	6.40 m	—
h612(E)	8	#15	6.83 m	—
u601(E)	128	#15	1.45 m	⊏
v602(E)	45	#15	1.17 m	—
v603(E)	13	#15	1.99 m	—
v604(E)	13	#15	2.52 m	—
v605(E)	13	#15	3.05 m	—
v606(E)	26	#15	3.59 m	—
v607(E)	13	#15	3.38 m	—
Concrete Structures			Cu. M	33.7
Reinforcement Bars, Epoxy Coated			kg	1670
Structure Excavation			Cu. M	33
Permanent Steel Sheet Piling			Sq. M	183
Pipe Handrail			Meter	23



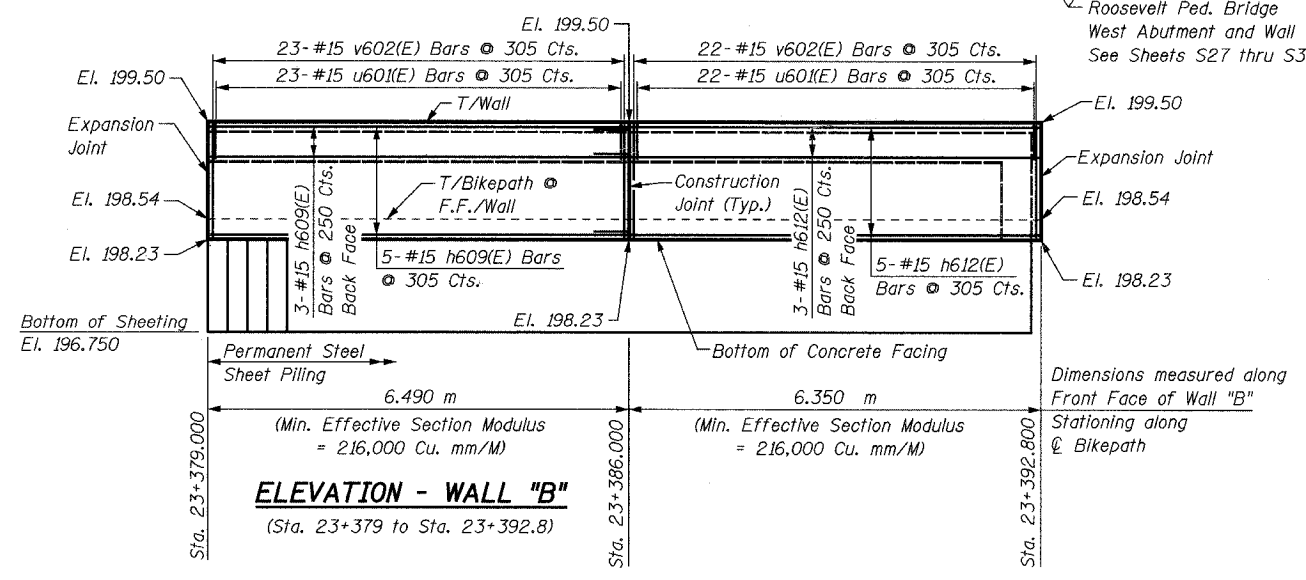
***NOTE:**
For horizontal curve and alignment information, see Plan & Profile drawings.



Bar	R	L
h606(E)	29.56 m	8.02 m
h608(E)	29.56 m	7.44 m
h609(E)	25.15 m	6.40 m
h612(E)	25.15 m	6.83 m



NOTES:
See Sheet S21 for Notes.



SHEET S24 of S33

REVISIONS		NAME	DATE
NO.	DESCRIPTION		

URS 1701 GOLF ROAD, SUITE 1000 TEL (847) 228-0707
ROLLING MEADOWS, IL 60008 FAX (847) 228-1115

VILLAGE OF OAKBROOK
SALT CREEK GREENWAY TRAIL
RET. WALL STA. 23+379 TO 23+400
PLAN & ELEVATION

DATE: 06/30/05
DESIGNED BY: MDS
DRAWN BY: MDS
CHECKED BY: GAT