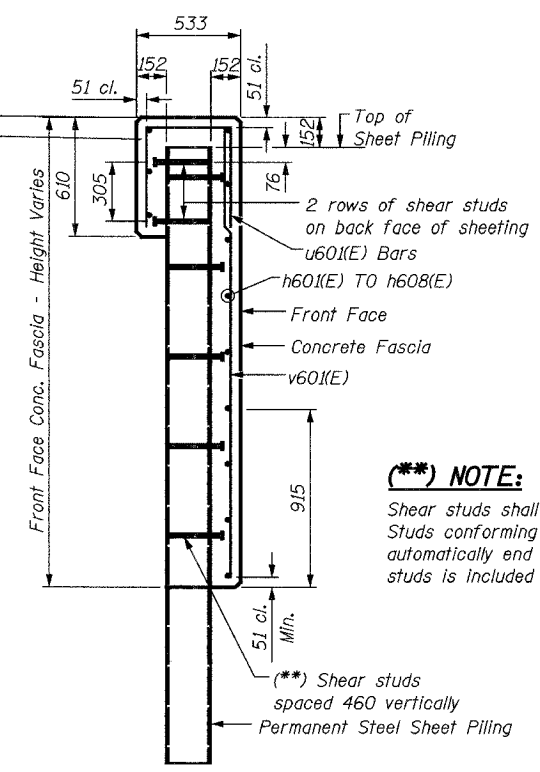
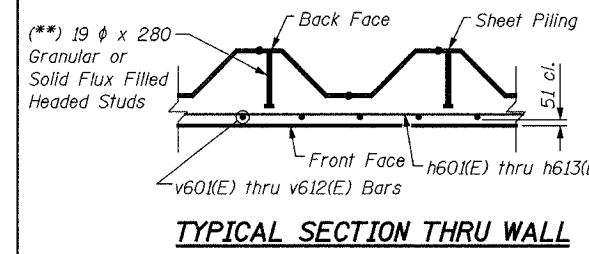


SECTION THRU WALL "B"
(Section Sta. 23+317 to Sta. 23+379)

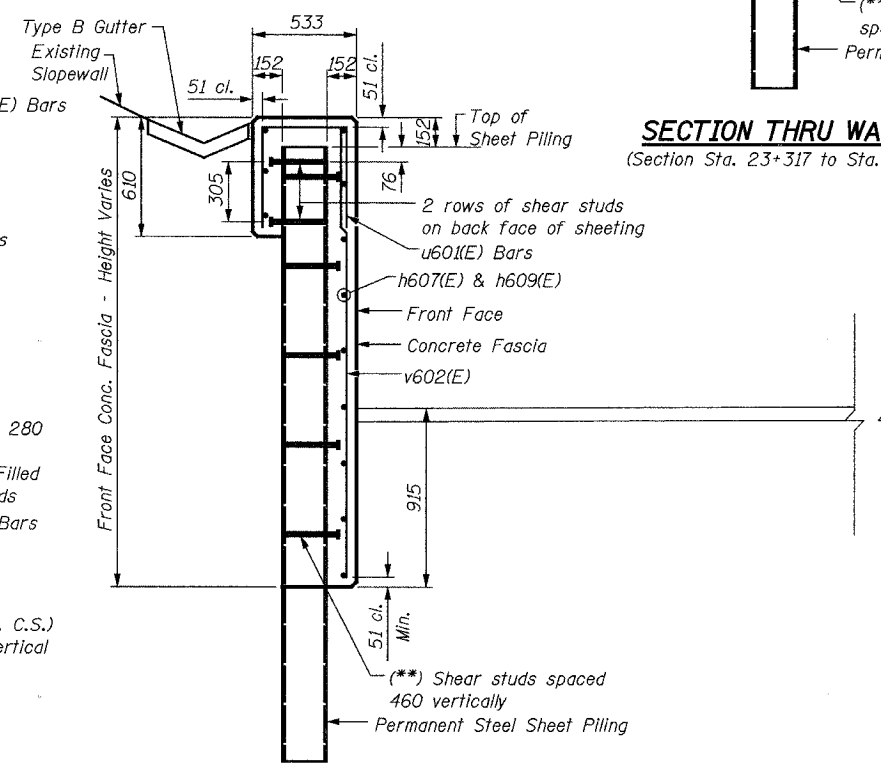


() NOTE:**

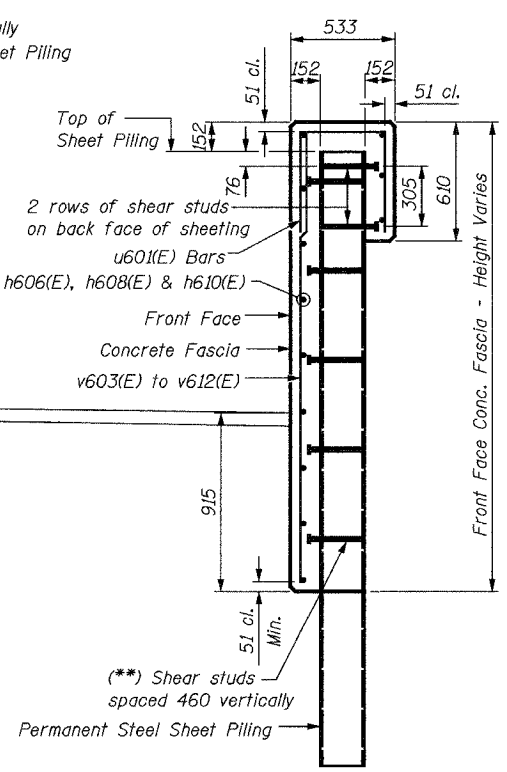
Shear studs shall be 19 dia. x 280 Granular or Solid Flux Headed Studs conforming to 505.08 (m) of the Standard Specifications automatically end welded, in the field to Sheet Piling. The cost of the studs is included in the cost of PERMANENT STEEL SHEET PILING.



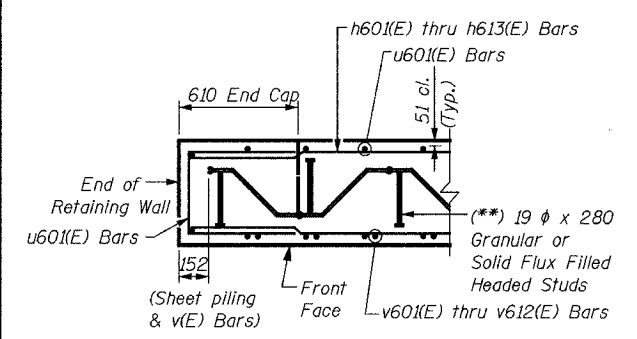
TYPICAL SECTION THRU WALL



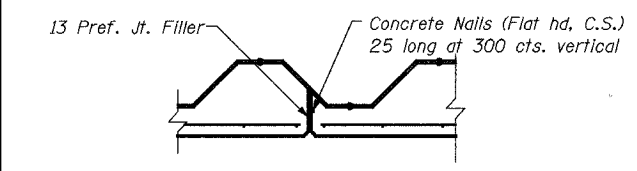
SECTION THRU WALL "B"
(Section Sta. 23+379 to Sta. 23+392.80)



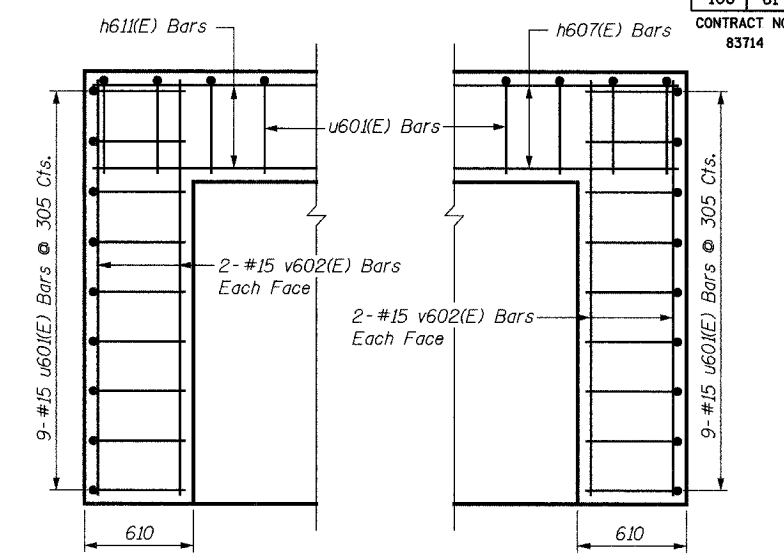
SECTION THRU WALL "C"
(Section Sta. 23+379 to Sta. 23+422.268)



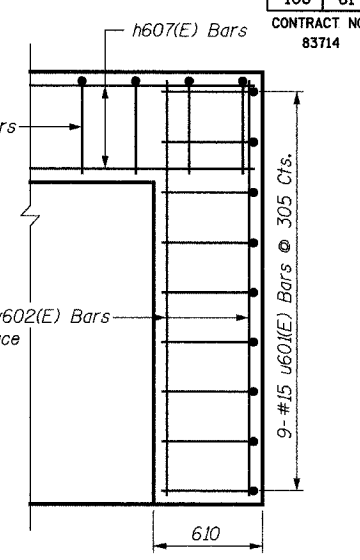
SECTION THRU CAP



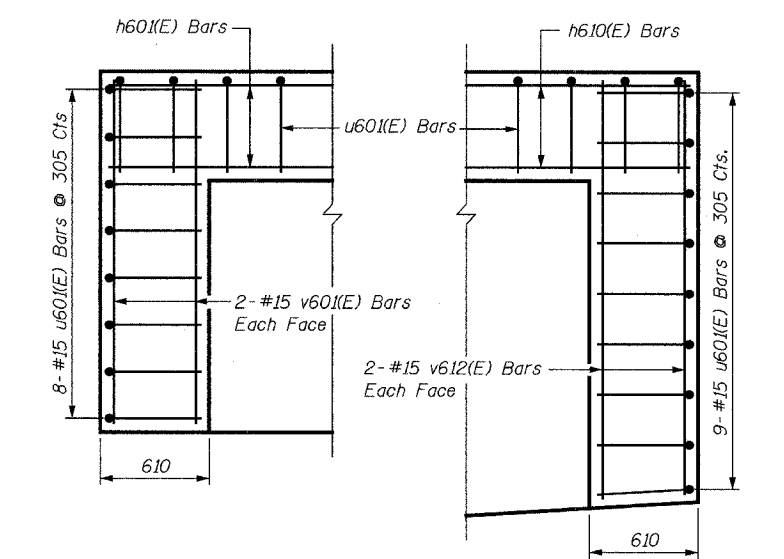
CONSTRUCTION JOINT DETAILS



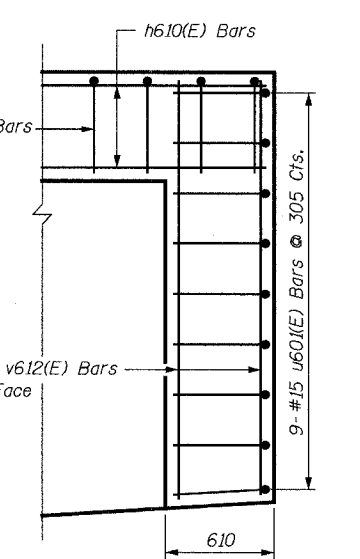
END CAP WALL REINFORCEMENT
(Wall B, North End)



END CAP WALL REINFORCEMENT
(Wall B, South End)



END CAP WALL REINFORCEMENT
(Wall C, North End)



END CAP WALL REINFORCEMENT
(Wall C, South End)

NOTES:

See Sheet S21 for Notes.

SHEET S26 of S33

REVISIONS		NAME	DATE
NO.	DESCRIPTION		

URS

1701 GOLF ROAD, SUITE 1000
ROLLING MEADOWS, IL 60008

TEL (847) 228-0707
FAX (847) 228-1115

VILLAGE OF OAKBROOK

SALT CREEK GREENWAY TRAIL

RET. WALL "B" AND "C"

DETAILS

DATE: 06/30/05
DESIGNED BY: MDS

DRAWN BY: MDS
CHECKED BY: GAT