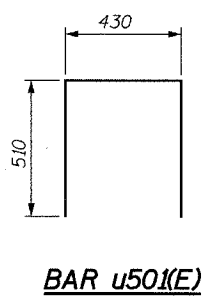
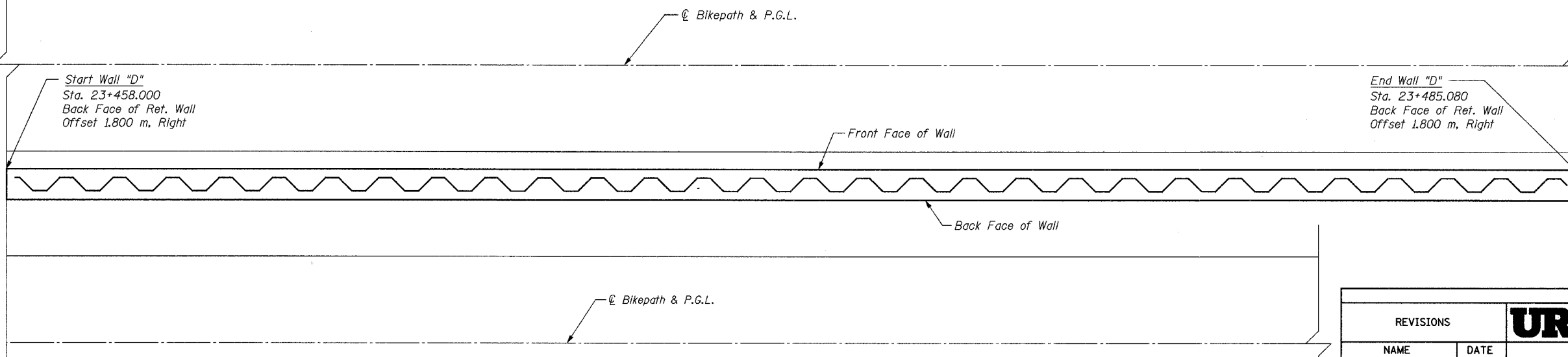


**ELEVATION - WALL "D"**  
(Sta. 23+458 to Sta. 23+484.08)



**BAR u501(E)**



**PLAN - WALL "D"**  
(Sta. 23+458 to Sta. 23+484.08)  
(Reinforcement Omitted for Clarity)

**NOTES:**  
For Notes and Bill of Material, see Sheet S29.  
Work this sheet with Sheet S29.

SHEET S28 of S33

REVISIONS		NAME	DATE
NO.	DESCRIPTION		

**URS**

1701 GOLF ROAD, SUITE 1000  
ROLLING MEADOWS, IL 60008

TEL (847) 228-0707  
FAX (847) 228-1115

VILLAGE OF OAKBROOK

SALT CREEK GREENWAY TRAIL

WALL "D", STA. 23+458 TO

STA. 23+485.08, PLAN & ELEVATION

DATE: 06/30/05  
DESIGNED BY: MDS

DRAWN BY: MDS  
CHECKED BY: GAT