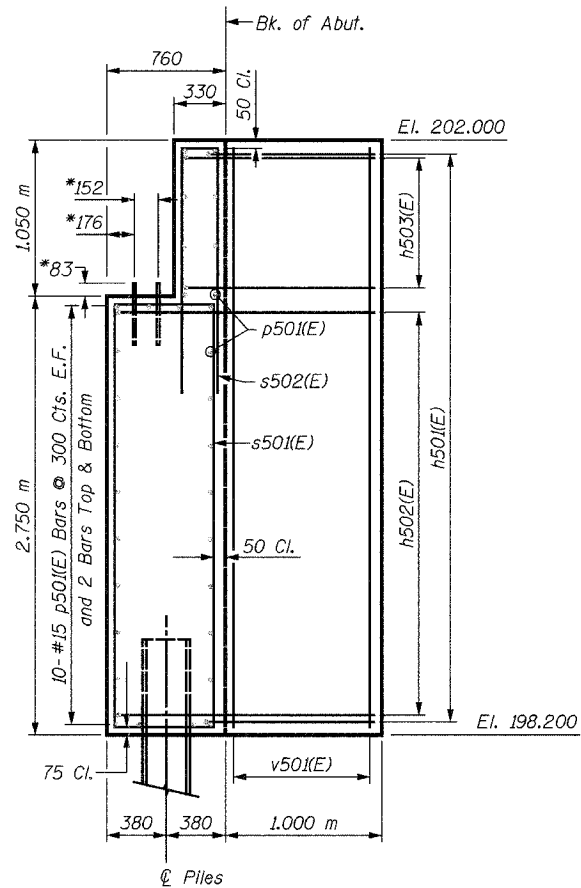
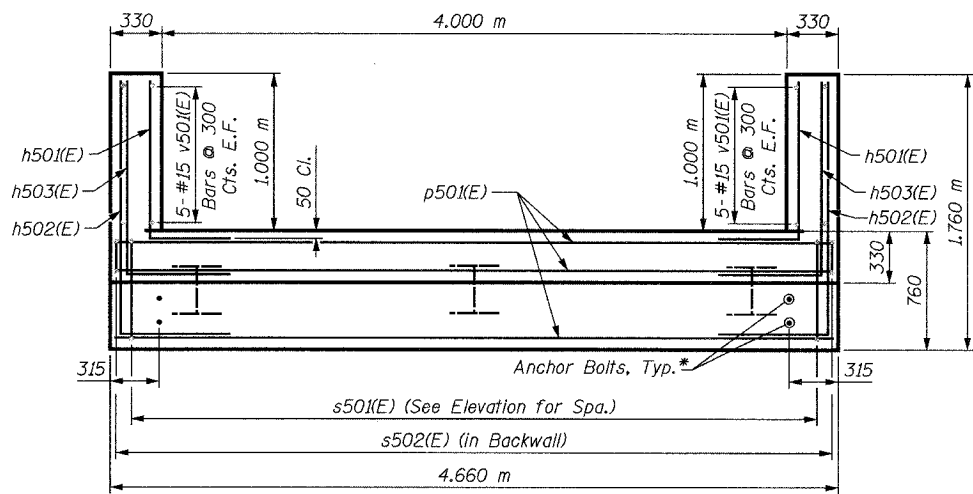


ELEVATION



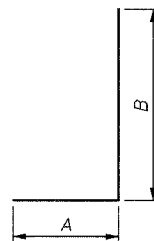
SIDE VIEW

*Anchor bolt size and locations shall be checked against the Bridge Fabricator's requirements prior to setting them.

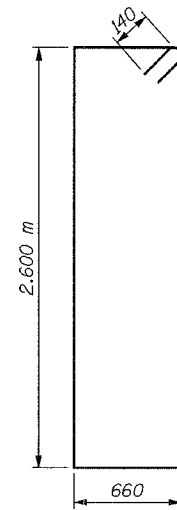


PLAN

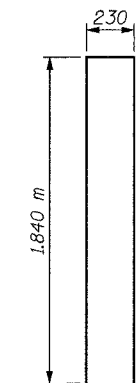
Bar	A	B
h501(E)	0.900 m	1.000 m
h502(E)	0.900 m	1.640 m
h503(E)	0.900 m	1.220 m



BAR h501(E) TO h503(E)



BAR s501(E)



BAR s502(E)

BILL OF MATERIAL

Bar	No.	Size	Length	Shape
h501(E)	28	#15	1.90 m	□
h502(E)	20	#15	2.54 m	□
h503(E)	8	#15	2.12 m	□
p501(E)	32	#15	4.56 m	—
s501(E)	16	#15	6.84 m	□
s502(E)	16	#15	3.91 m	□
v501(E)	20	#15	3.67 m	—
Concrete Structures			Cu. M	14.0
Reinforcement Bars, Epoxy Coated			kg	810
Furnishing Steel Piles HP310x94			Meter	51
Driving Steel Piles			Meter	51
Metal Shoes			Each	3
Structure Excavation			Cu. M	31

LEGEND

E.F. = Each Face

MIN. BAR LAP

#15 = 890

PILE DATA:

Type: HP310x94
Capacity: Driven to Refusal
Est. Length: 17 m
No. Required: 3

NOTES:

Space reinforcement in cap to miss anchor bolts.

All edges shall have standard 20 mm chamfers except as noted.

For Anchor Bolt Details, see Sheet S32.

There shall be no splicing of longitudinal bars. Bars shall be ordered full length.

Bars designated (E) shall be epoxy coated.

SHEET S30 of S33

REVISIONS		NAME	DATE	URS 1701 GOLF ROAD, SUITE 1000 ROLLING MEADOWS, IL 60008 TEL (847) 228-0707 FAX (847) 228-1115
NO.	DESCRIPTION			

VILLAGE OF OAKBROOK
SALT CREEK GREENWAY TRAIL
PEDESTRIAN BRIDGE, STA. 23+508.08
WEST ABUTMENT DETAILS

DATE: 06/30/05
DESIGNED BY: MDS
DRAWN BY: MDS
CHECKED BY: GAT