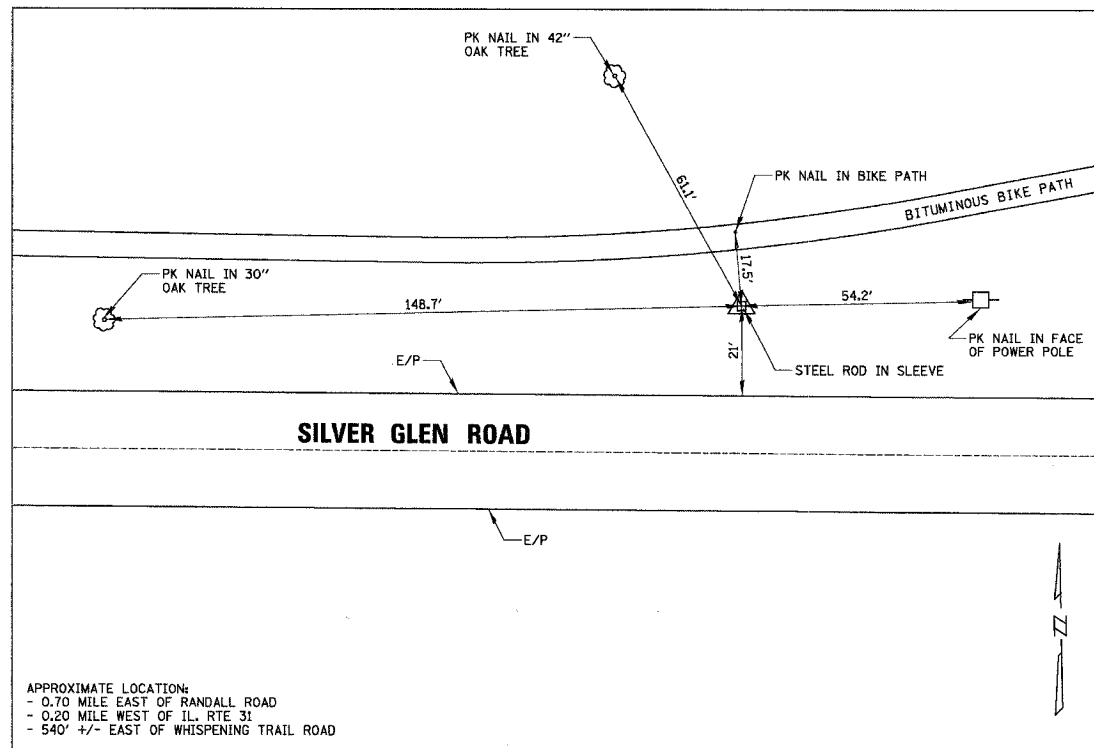


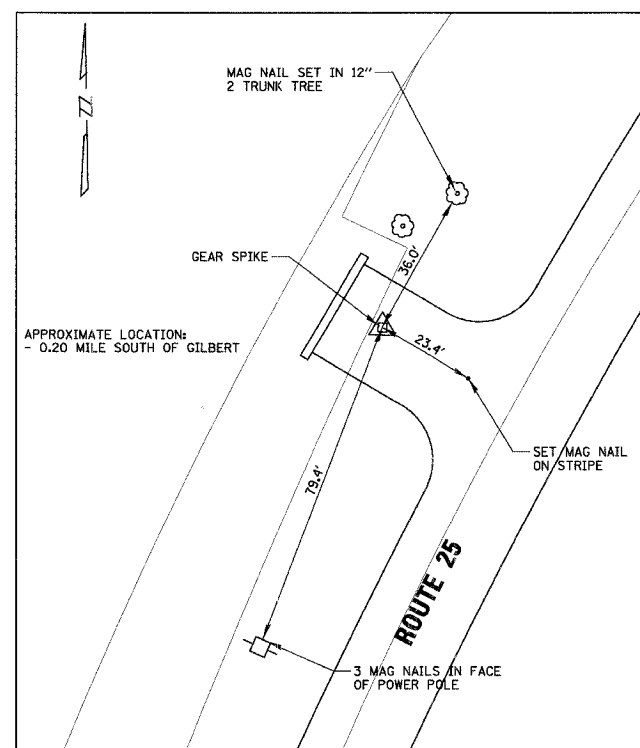
CONTRACT NO. 83862

F.A.P. RTE.	SECTION	COUNTY	TOTAL SHEETS	SHEET NO.
361	06-00214-03-BR	KANE	52	07
STA.		TO STA.		
FED. ROAD DIST. NO. 1 ILLINOIS FED. AID PROJECT				



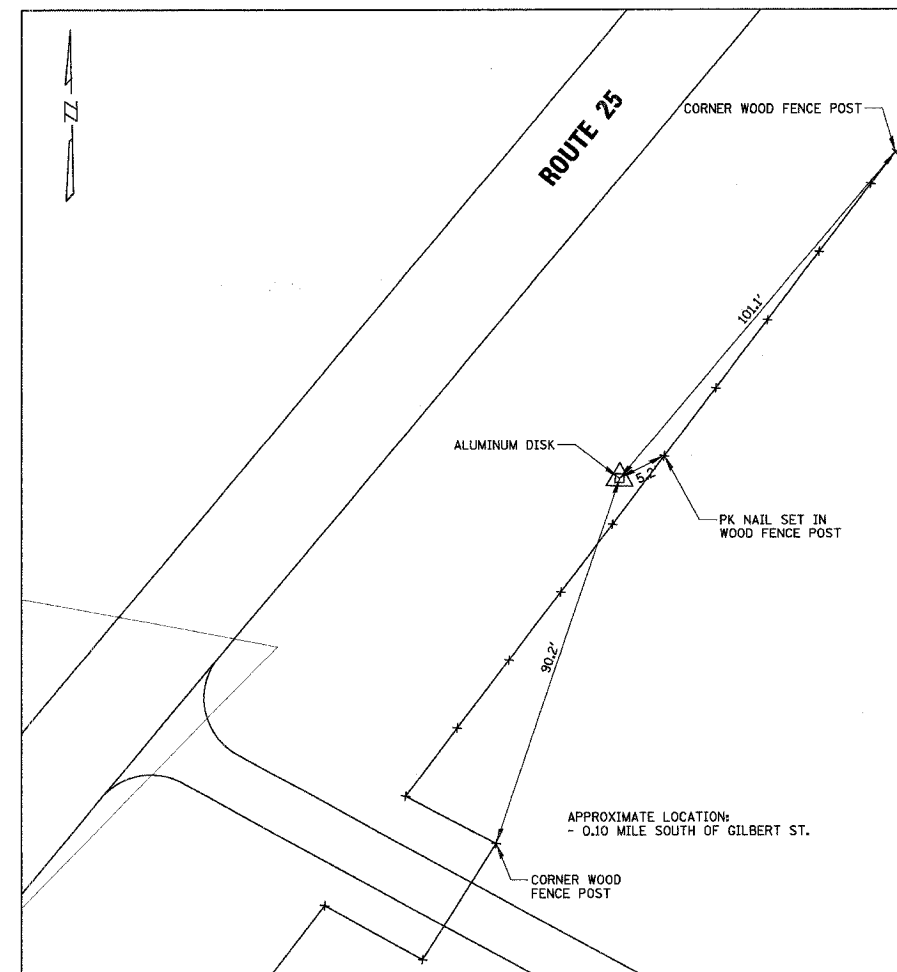
PRIMARY CONTROL POINT 2

1" = 20'



SECONDARY CONTROL POINT 49000

1" = 20' ON SITE

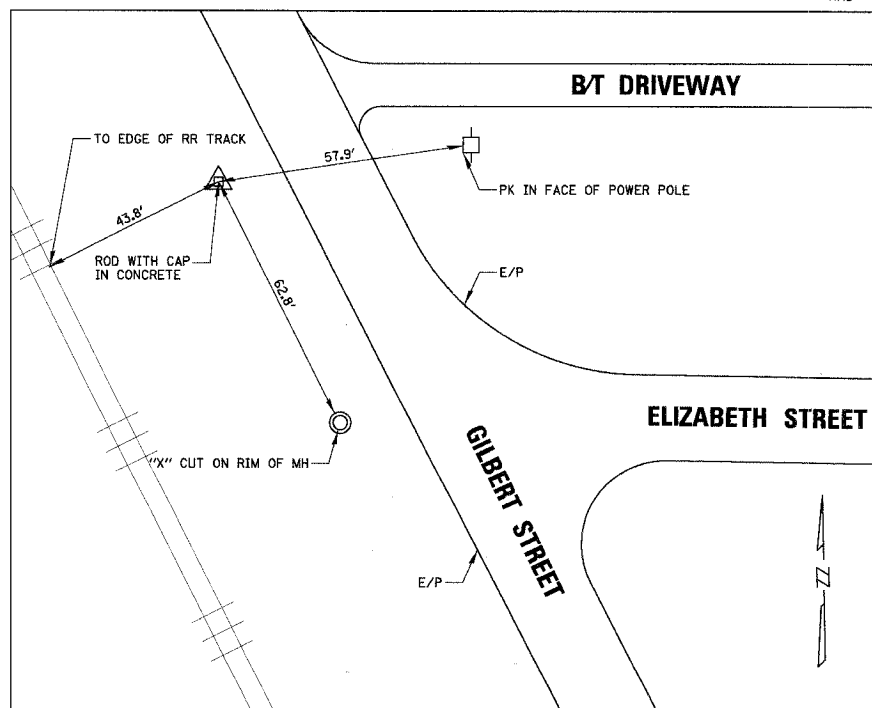


SECONDARY CONTROL POINT 19

1" = 20' ON SITE

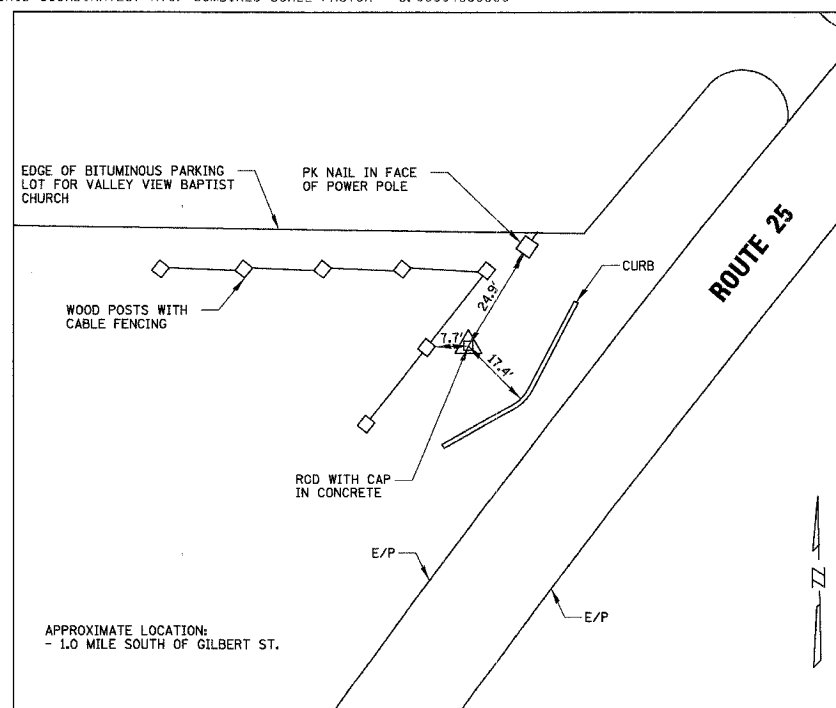
HORIZONTAL CONTROL			
NO.	NORTHING	EASTING	DESCRIPTION
CP-2	1931338.8282	985992.2552	STEEL ROD IN SLEEVE
CP-8	1930214.7179	986827.3209	ROD WITH C.B.B. CAP IN CONCRETE
CP-9	1938609.0557	986821.7024	ROD WITH C.B.B. CAP IN CONCRETE
CP-19	1934105.243	989061.444	ALUMINUM DISK
CP-49000	1933736.567	988681.869	GEAR SPIKE

NAD '83 - (GRID COORDINATES) AVG. COMBINED SCALE FACTOR = 0.99994303889



PRIMARY CONTROL POINT 9

1" = 20'



PRIMARY CONTROL POINT 8

1" = 20'

ELEVATION BENCHMARKS DATUM: NGVD OF 1929 (FEMA)		
NO.	DESCRIPTION	ELEV.
BN 19	"ALUMINUM DISK" SET IN CONCRETE, 0.10 MILE SOUTH OF GILBERT STREET ON EAST SIDE OF ROUTE 25 4' FROM SPLIT RAIL FENCE.	724.23
BN 22	"CHISELED BOX CUT" SET AT THE TOP OF CONCRETE BRIDGE HEADWALL AT THE NORTHEAST CORNER OF BRIDGE AT THE SOUTHEAST CORNER OF STEARNS ROAD AND DUNHAM ROAD.	767.36
OSBM 1	SQUARE CUT ON NORTHWEST CORNER OF SOUTHERLY ABUTMENT OF ILLINOIS PRAIRIE PATH BRIDGE OVER CHICAGO, CENTRAL & PACIFIC RAIL LINES	763.43

ELEVATION BENCHMARKS DATUM: NGVD OF 1929 (FEMA)		
NO.	DESCRIPTION	ELEV.
OSBM 133	MINI RAILROAD SPIKE, WEST FACE OF POWER POLE WITH LIGHT AT WESTERLY SIDE OF INTERSECTION OF ROUTE 25 & GILBERT	732.77
OSBM 134	FOUND ALUMINUM DISK IN CONCRETE 40' NORTHEASTERLY OF EDGE OF PAVEMENT OF GILBERT ROAD, 200' NORTHERLY OF 3RD BIT ENTRANCE NORTHERLY OF ROUTE 25	739.08
OSBM 135	MINI RAILROAD SPIKE IN POLE ON EAST SIDE OF DUNHAM ROAD IN 2ND POLE SOUTH OF 6N879	756.18
OSBM 132	RAILROAD SPIKE IN WEST FACE POWER POLE AT SOUTH SIDE DRIVE TO 6N921 JUST NORTH OF HICKORY ON ROUTE 25	766.32
OSBM 130	SQUARE CUT ON SOUTHEAST CONCRETE WALL OF BRIDGE ROUTE 25 OVER BREWSTER CREEK	722.00

REVISIONS	
NAME	DATE

ILLINOIS DEPARTMENT OF TRANSPORTATION

ALIGNMENT, TIES & BENCHMARKS

SCALE: VERT. AS SHOWN
DATE: 9/13/2006

DRAWN BY
CHECKED BY

CHRISTOPHER B. BURKE ENGINEERING, LTD.
9575 W. Higgins Road, Suite 600
Rosemont, Illinois 60018
(847) 822-0600



PLOT DATE = 9/13/2006
FILE NAME = N:\Projects\83862\83862.dwg
PLOT SCALE = 1" = 20'
USER NAME = CBURKE