

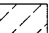
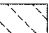



F.A.U. RTE.	SECTION	COUNTY	TOTAL SHEETS	SHEET NO.
1441	DO-00059-00-BR	KANE	154	15
STA. 13+00		TO STA. 15+72.69		
FED. ROAD DIST. NO.		ILLINOIS FED. AID PROJECT		


**LEGEND:
EXISTING CONDITION**

-  TREE REMOVAL, SPL
-  C&G REMOVAL
-  PAVEMENT REMOVAL
-  SIDEWALK REMOVAL
-  BITUMINOUS REMOVAL

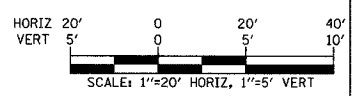
- NOTES:
 1. ALL SAWCUTS FOR PAVEMENT REMOVALS ARE INCIDENTAL TO REMOVAL ITEM
 2. FOR DRAINAGE AND UTILITY REMOVAL ITEMS, SEE SH 33
 3. FOR BRIDGE REMOVAL ITEMS, SEE SH 77
 4. FOR RIVER WALK REMOVAL ITEMS, SEE SH 41
 5. CONTACT THE BATAVIA POSTMASTER AT (630) 879-1483 FOR REMOVAL OF THE EXISTING MAIL BOX

EXISTING CONDITION

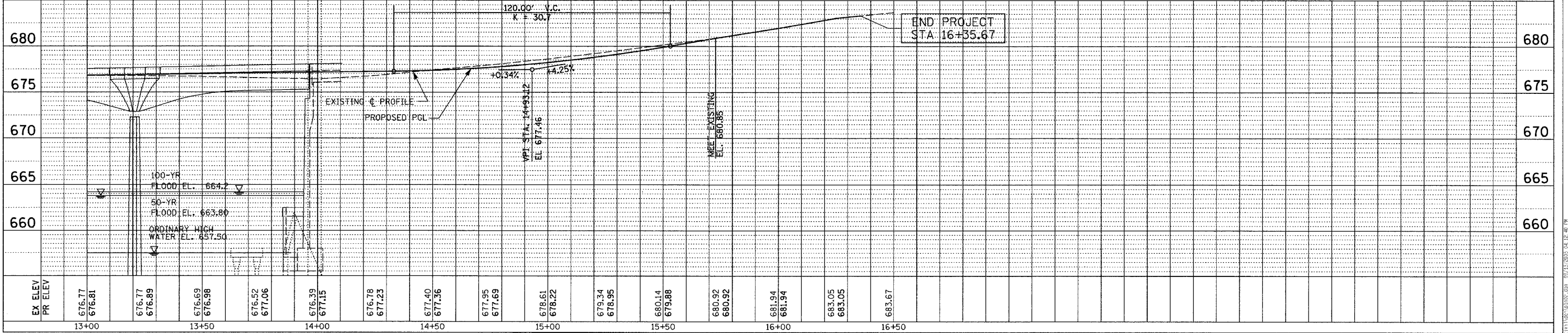
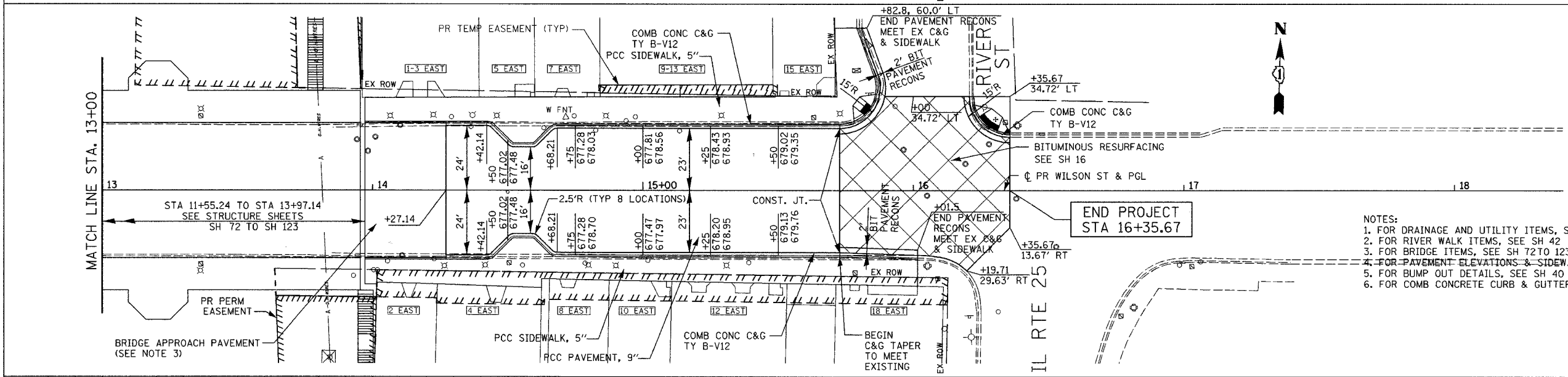
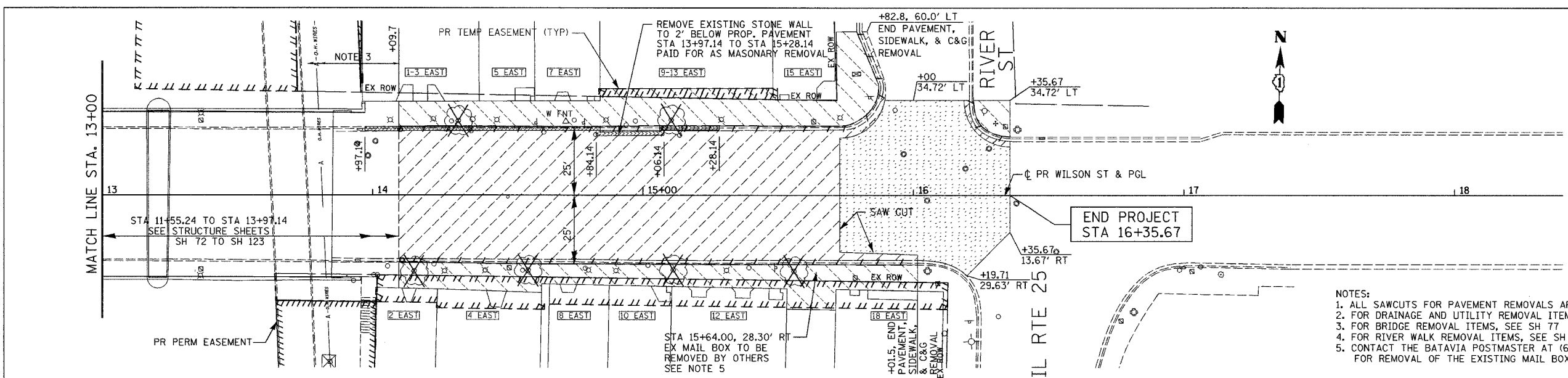
**LEGEND:
PROPOSED CONDITION**

-  BITUMINOUS RESURFACING
- +00 STATION FLOW LINE EL.
- XXX.XX TOP/CURB EL.

- NOTES:
 1. FOR DRAINAGE AND UTILITY ITEMS, SEE SH 32 - 35
 2. FOR RIVER WALK ITEMS, SEE SH 42 & 43
 3. FOR BRIDGE ITEMS, SEE SH 72 TO 123
 4. FOR PAVEMENT ELEVATIONS & SIDEWALK DETAILS, SEE SH 40
 5. FOR BUMP OUT DETAILS, SEE SH 40
 6. FOR COMB CONCRETE CURB & GUTTER DETAILS, SEE SH 16



PROPOSED CONDITION



DATE: _____ BY: _____

REVIEWED: _____

PLANNED: _____

NOTE BOOK NO. _____

DATE: _____ BY: _____

REVIEWED: _____

PLANNED: _____

NOTE BOOK NO. _____

PLOT DATE: 09/13/2006
 FILE NAME: 8FILES
 PLOT SCALE: 8SCALE
 USER NAME: 8USER