

| F.A.U. RTE.         | SECTION        | COUNTY                    | TOTAL SHEETS | SHEET NO. |
|---------------------|----------------|---------------------------|--------------|-----------|
| 1441                | DO-00059-00-BR | KANE                      | 154          | 32        |
| STA. 10+00          |                | TO STA.13+00              |              |           |
| FED. ROAD DIST. NO. |                | ILLINOIS FED. AID PROJECT |              |           |

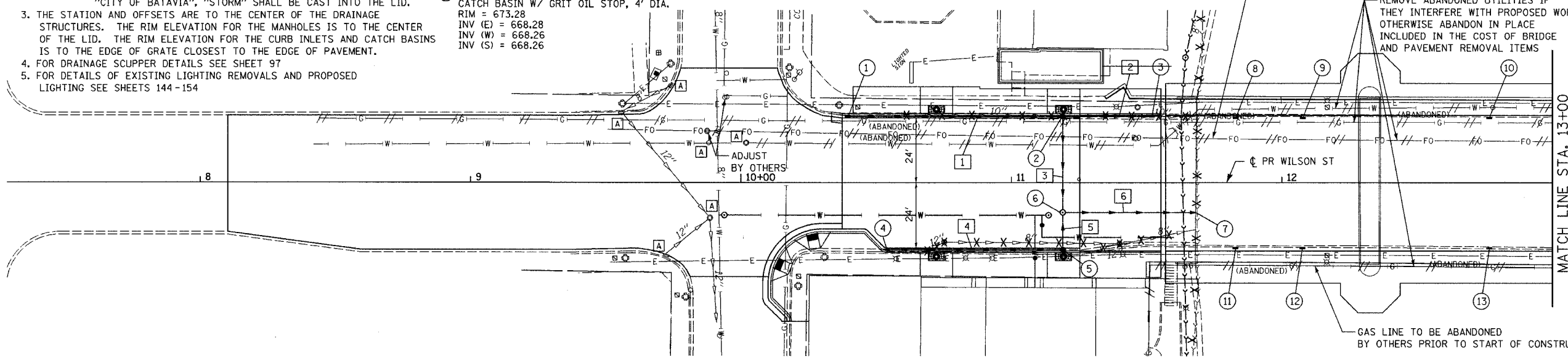
- NOTES:
- FOR DETAILS OF PROPOSED DRAINAGE ITEMS, SEE SHEETS 36 AND 38.
  - FRAMES, LIDS AND GRATES FOR STORM SEWER INLETS, CATCH BASINS AND MANHOLES SHALL CONFORM TO THE FOLLOWING OR AN APPROVED EQUAL UNLESS OTHERWISE NOTED: CURB INLET&CATCH BASIN: E.J. 7221 TYPE 1 CURB BACK, TYPE M1 GRATE MANHOLE: E.J. 1020 FRAME AND SOLID LID WITH THE WORDS "CITY OF BATAVIA", "STORM" SHALL BE CAST INTO THE LID.
  - THE STATION AND OFFSETS ARE TO THE CENTER OF THE DRAINAGE STRUCTURES. THE RIM ELEVATION FOR THE MANHOLES IS TO THE CENTER OF THE LID. THE RIM ELEVATION FOR THE CURB INLETS AND CATCH BASINS IS TO THE EDGE OF GRATE CLOSEST TO THE EDGE OF PAVEMENT.
  - FOR DRAINAGE SCUPPER DETAILS SEE SHEET 97
  - FOR DETAILS OF EXISTING LIGHTING REMOVALS AND PROPOSED LIGHTING SEE SHEETS 144-154

- ① STA 10+39.42, 24.54' LT 12" STORM SEWER, RCP, T2, CL III INLET TYPE A RIM = 672.88 INV (E) = 668.61
- ② STA 11+19.00, 23.54' LT CATCH BASIN W/ GRIT OIL STOP, 4' DIA. RIM = 673.28 INV (E) = 668.28 INV (W) = 668.26 INV (S) = 668.26
- ③ STA 11+52.00, 24.54' LT INLET TYPE A W/T4 F&G RIM = 673.50 INV (W) = 669.23
- ④ STA 11+83.00, 24.2865 LT DRAINAGE SCUPPER, DS-11 RIM = 673.97
- ⑤ STA 12+07.69, 24.2865 LT DRAINAGE SCUPPER, DS-11 RIM = 674.52
- ⑥ STA 12+76.69, 24.2865 LT DRAINAGE SCUPPER, DS-11 RIM = 676.27

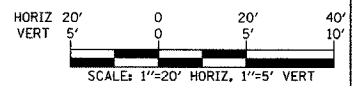


**DRAINAGE LEGEND**

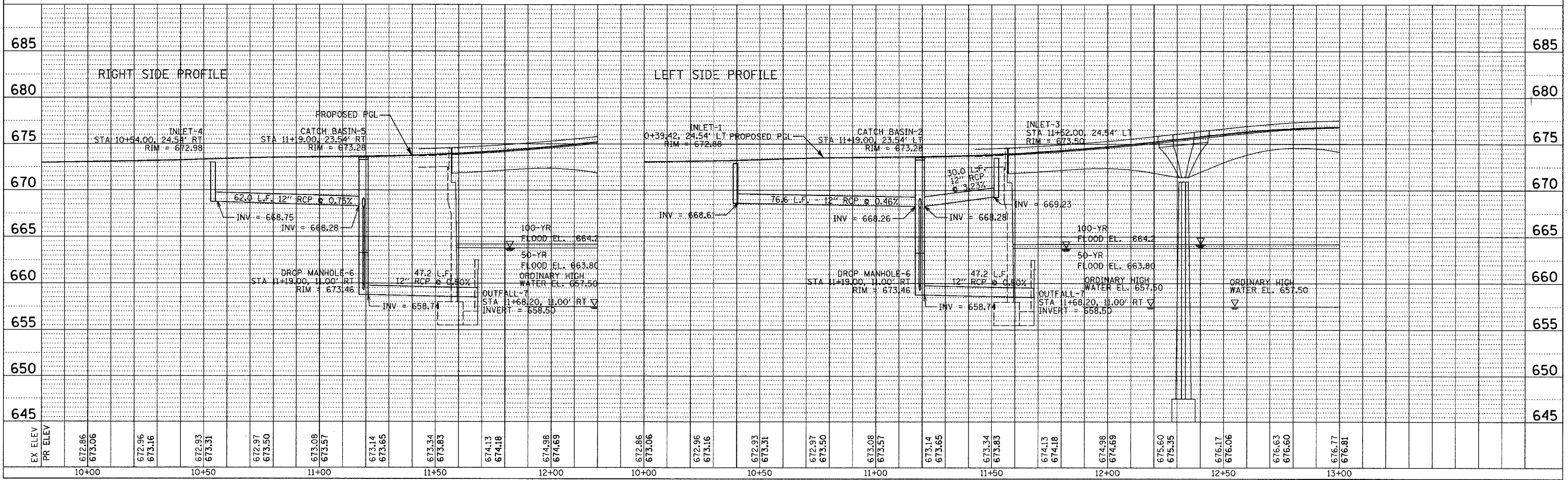
- EXISTING STORM SEWER
- EXISTING INLET
- EXISTING MANHOLE
- STORM SEWER TO BE REMOVED
- PROPOSED STORM SEWER
- PROPOSED INLET
- PROPOSED CATCH BASIN
- PROPOSED MANHOLE
- STRUCTURE TO BE REMOVED
- STRUCTURE TO BE ADJUSTED



- ④ STA 10+54.00, 24.54' RT 12" STORM SEWER, RCP, T2, CL III INLET TYPE A RIM = 672.98 INV (E) = 668.75
- ⑤ STA 11+19.00, 23.54' RT CATCH BASIN W/ GRIT OIL STOP, 4' DIA. RIM = 673.28 INV (W) = 668.28 INV (N) = 668.28
- ⑥ STA 11+19.00, 11.00' RT DROP MANHOLE, TYPE A2-2, 4' DIA RIM = 673.46 INV (N) = 668.11 INV (S) = 668.11 INV (E) = 658.74
- ⑦ STA 11+68.20, 11.00' RT SEWER OUTFALL AT RET WALL (SEE STRUCTURAL PLANS FOR DETAIL) INV = 658.50
- ⑧ STA 11+83.00, 24.2865 RT DRAINAGE SCUPPER, DS-11 RIM = 673.97
- ⑨ STA 12+07.69, 24.2865 RT DRAINAGE SCUPPER, DS-11 RIM = 674.52
- ⑩ STA 12+76.69, 24.2865 RT DRAINAGE SCUPPER, DS-11 RIM = 676.27



|         |  |
|---------|--|
| DATE    |  |
| BY      |  |
| PLAN    |  |
| DATE    |  |
| BY      |  |
| PROFILE |  |
| DATE    |  |
| BY      |  |



|         |  |
|---------|--|
| DATE    |  |
| BY      |  |
| PROFILE |  |
| DATE    |  |
| BY      |  |

PLOT DATE: 08/13/2006  
 FILE NAME: #FILE14  
 PLOT SCALE: #SCALE1  
 USER NAME: #USER1